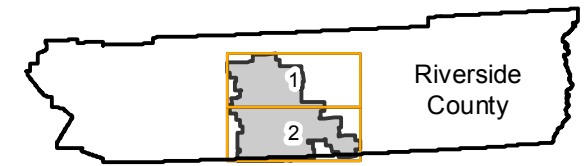


Universe-Special

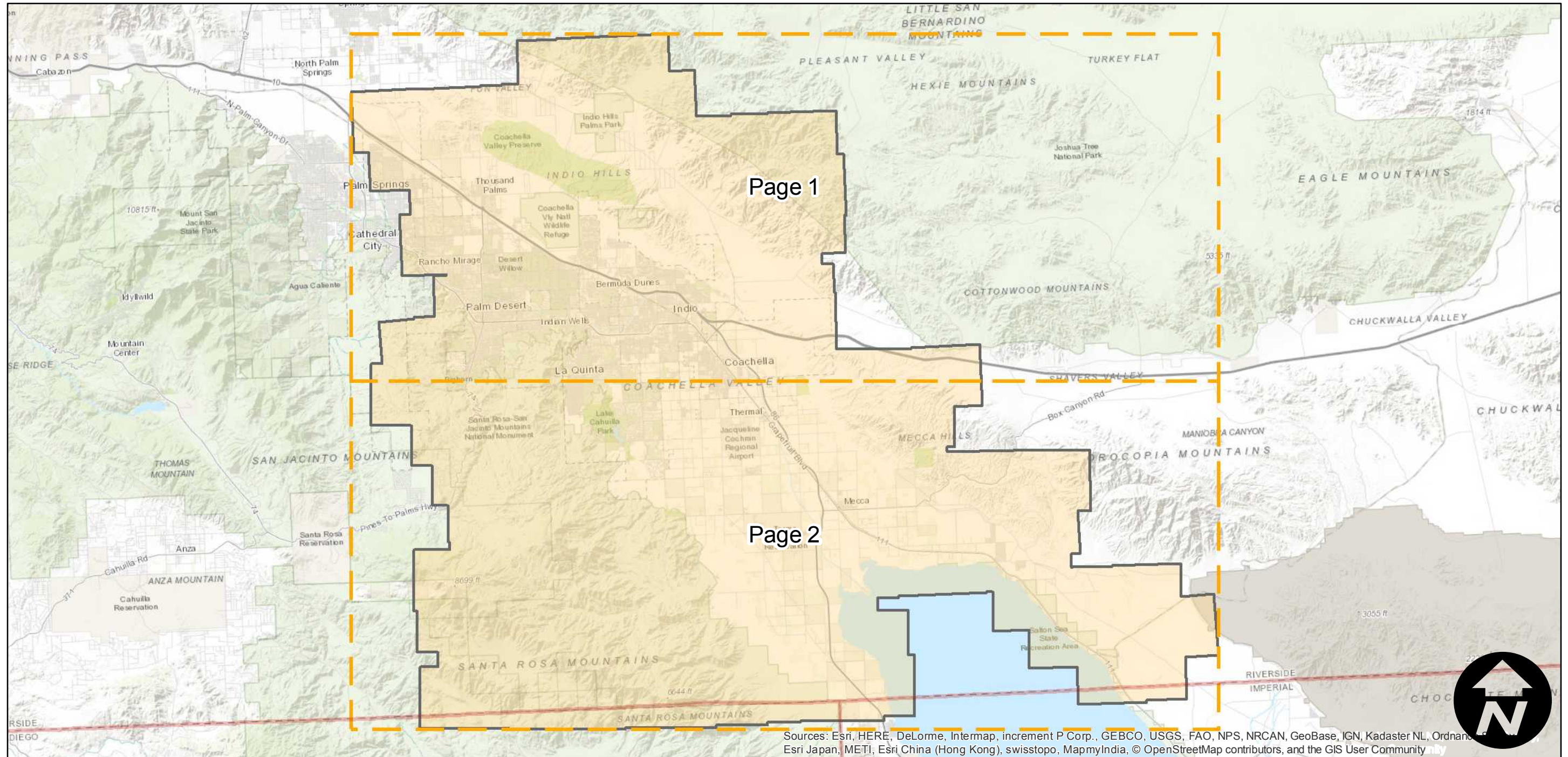
FLIGHT LOCATION

Counties: Riverside
Flight date(s): 08-31-1965
Scale: 1:24,000
Overlap: 40%

Note: Coachella Valley. Imagery acquired 1986.



Complete Metadata:
<http://www.library.ucsb.edu/map-imagery-lab/aerial-photography-information>



0 5 10 20 Miles

Index to Aerial Photography
Page Key

Scale of this index: 1:340,000

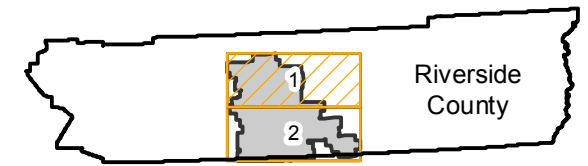
Sources: Esri, HERE, DeLorme, Intermap, increment P Corp., GEBCO, USGS, FAO, NPS, NRCAN, GeoBase, IGN, Kadaster NL, Ordnance Survey, Esri Japan, METI, Esri China (Hong Kong), swisstopo, MapmyIndia, © OpenStreetMap contributors, and the GIS User Community

Universe-Special

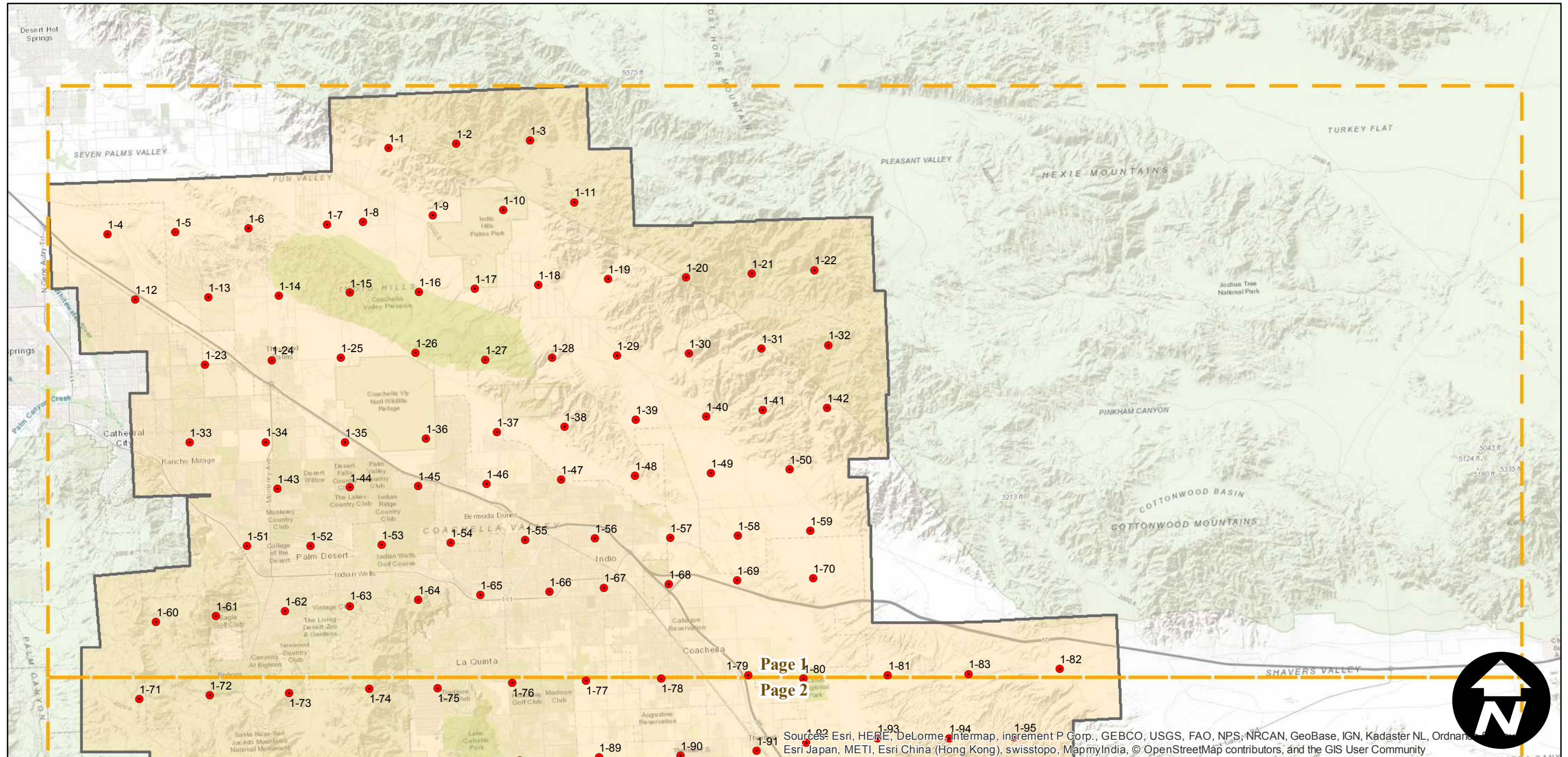
Counties: Riverside
Flight date(s): 08-31-1965
Scale: 1:24,000
Overlap: 40%

Note: Coachella Valley. Imagery acquired 1986.

FLIGHT LOCATION

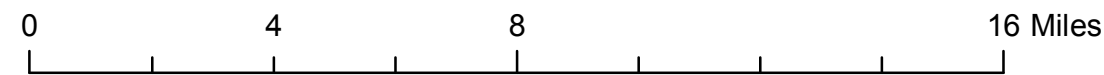


Complete Metadata:
<http://www.library.ucsb.edu/map-imagery-lab/aerial-photography-information>



Page 1
Page 2

Sources: Esri, HERE, DeLorme, Intermap, increment P Corp., GEBCO, USGS, FAO, NPS, NRCAN, GeoBase, IGN, Kadaster NL, Ordnance Survey, Esri Japan, METI, Esri China (Hong Kong), swisstopo, MapmyIndia, © OpenStreetMap contributors, and the GIS User Community



Index to Aerial Photography
Page 1 of 2

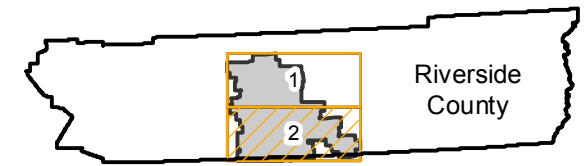
Scale of this index: 1:200,000

Universe-Special

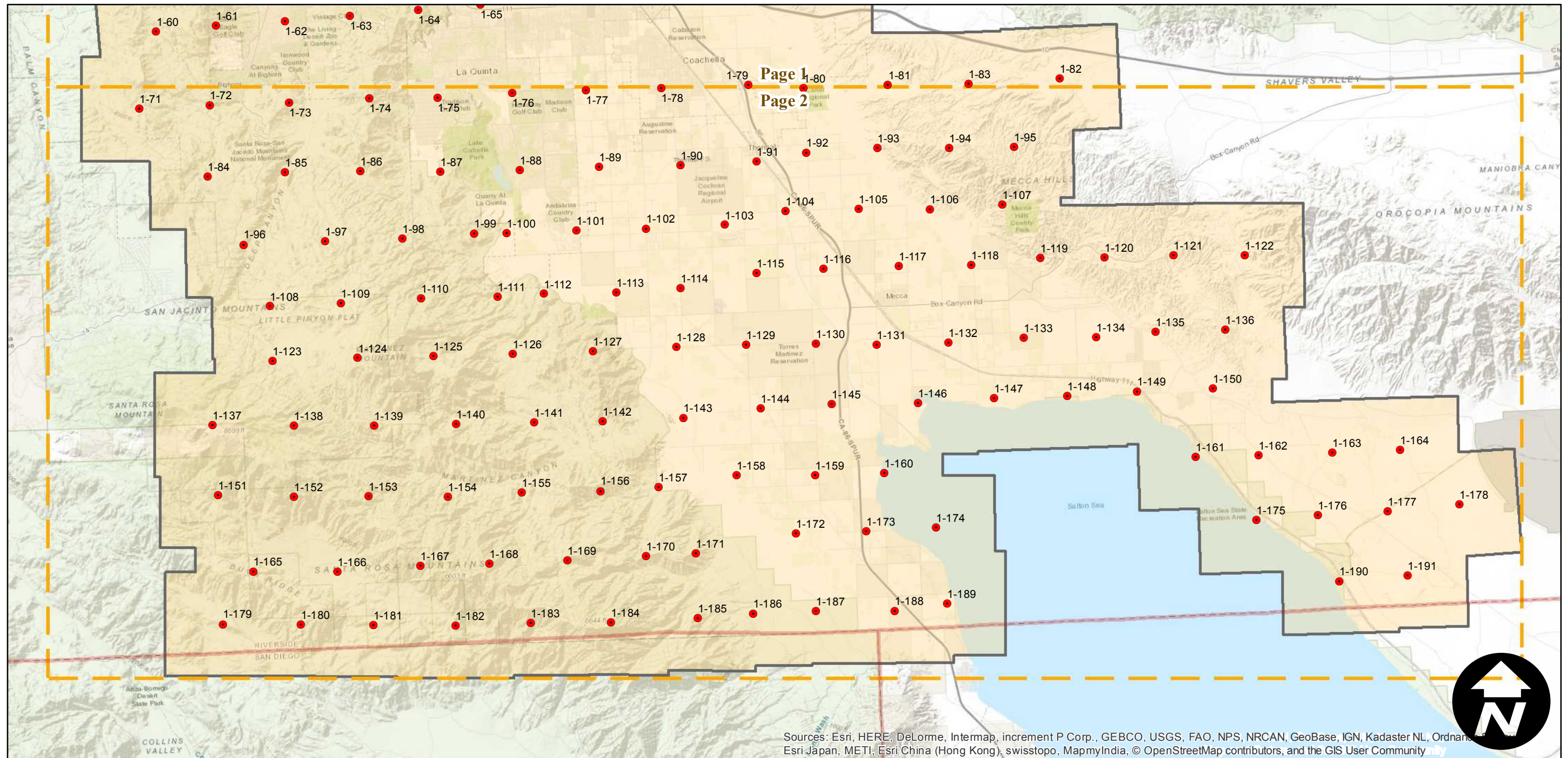
FLIGHT LOCATION

Counties: Riverside
Flight date(s): 08-31-1965
Scale: 1:24,000
Overlap: 40%

Note: Coachella Valley. Imagery acquired 1986.



Complete Metadata:
<http://www.library.ucsb.edu/map-imagery-lab/aerial-photography-information>



0 4 8 16 Miles

Index to Aerial Photography
Page 2 of 2

Scale of this index: 1:200,000