

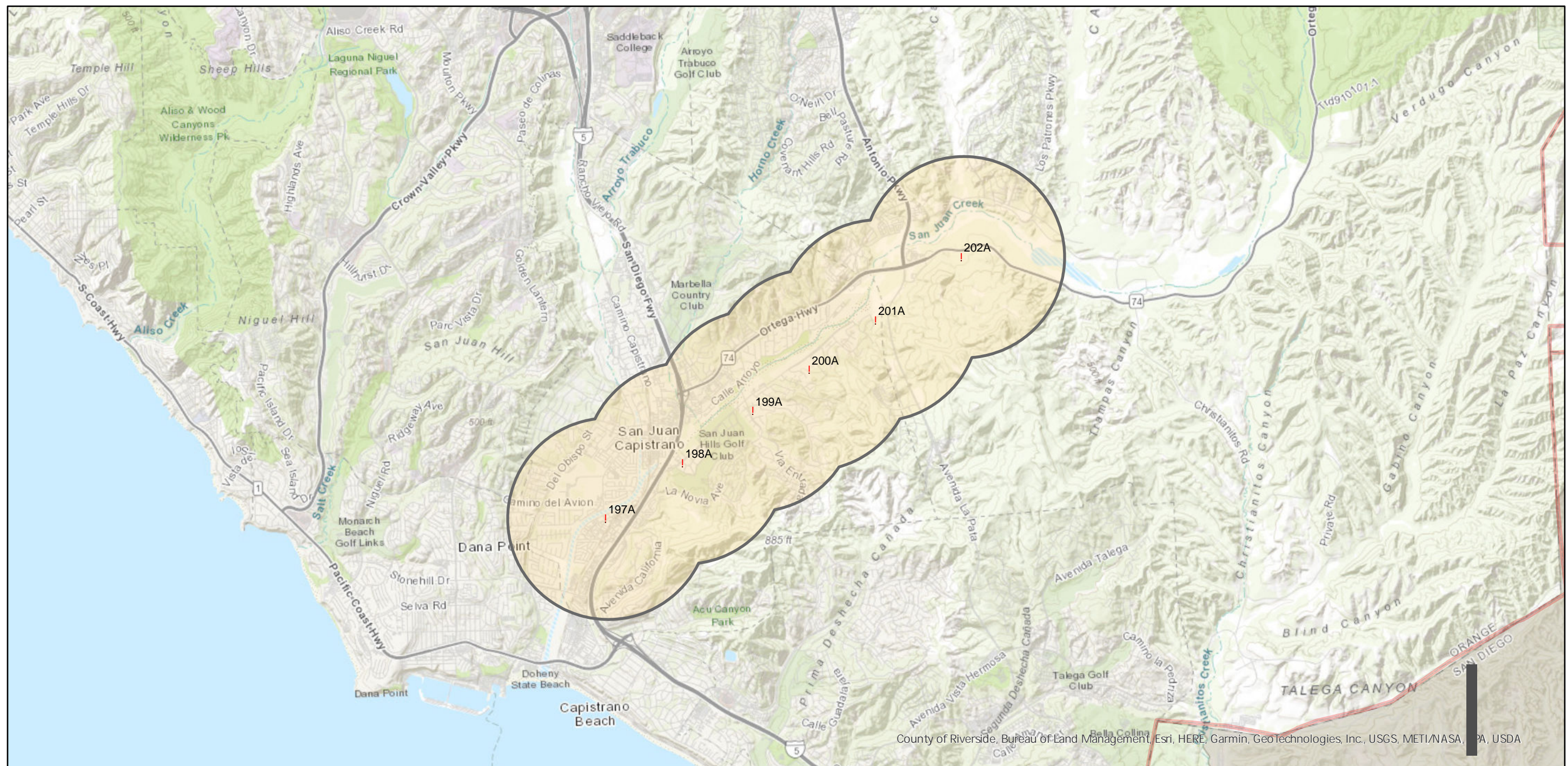
# TG-690V-26

Counties: Orange  
Flight date(s): 04-02-1969  
Scale: 1:14,000  
Overlap: 60%

Note: San Juan Capistrano. Frame numbers 690V-197A through 690V-202A.

Complete Metadata:  
<https://www.library.ucsb.edu/src/airphotos/aerial-photography-information>

## FLIGHT LOCATION



County of Riverside, Bureau of Land Management, Esri, HERE, Garmin, GeoTechnologies, Inc., USGS, METI/NASA, PA, USDA

0 1 2 4 Miles

Index to Aerial Photography  
Page 1 of 1

Scale of this index: 1:65,000