

TA-AH

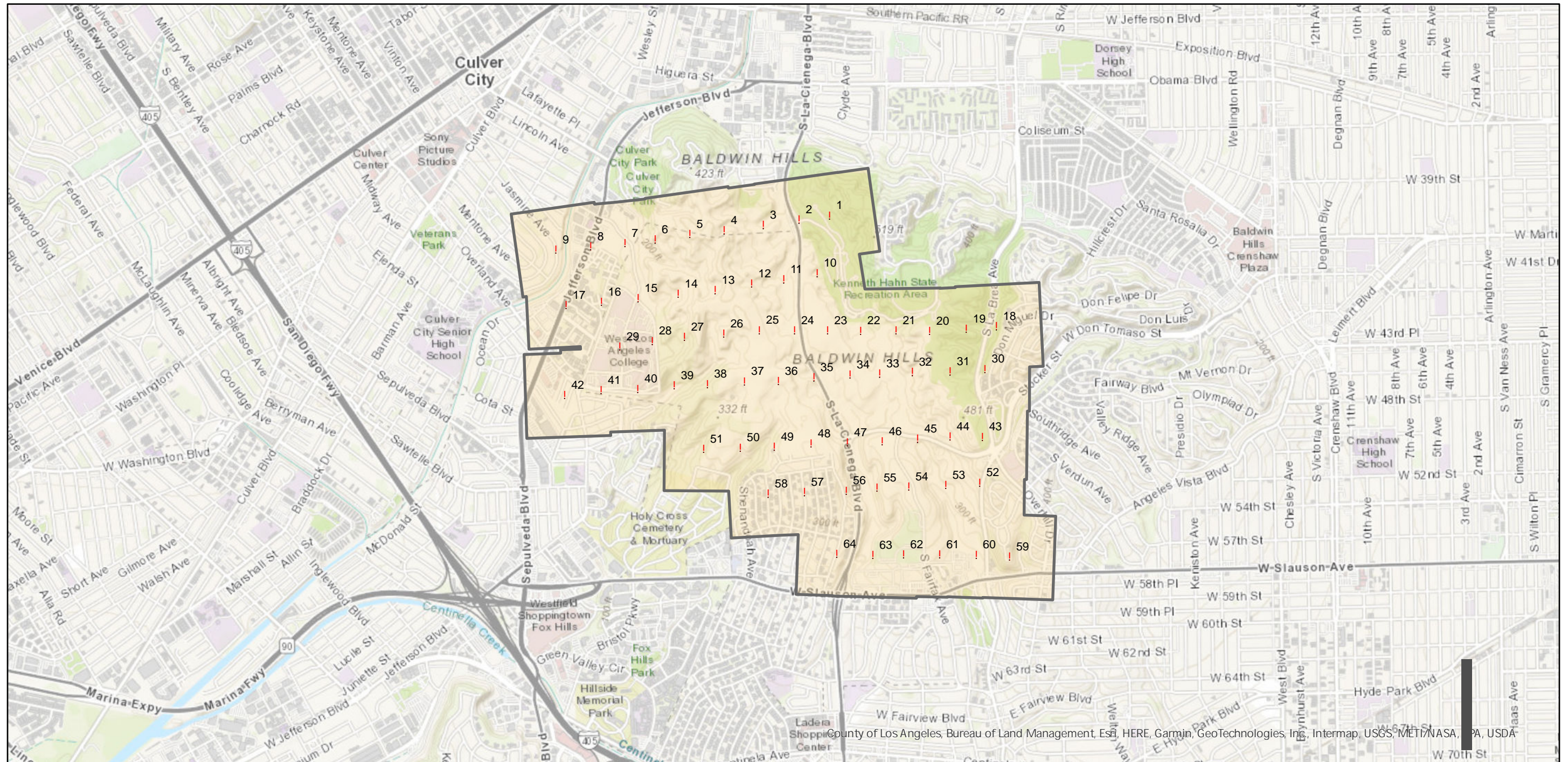
Counties: Los Angeles
Flight date(s): 04-14-1966
Scale: 1:14,400
Overlap: 60%

Note: Baldwin Hills: Inglewood oil field. Photograph numbers 1 through 64.

FLIGHT LOCATION



Complete Metadata:
<https://www.library.ucsb.edu/src/airphotos/aerial-photography-information>



0 0.5 1 2 Miles

Index to Aerial Photography
Page 1 of 1

Scale of this index: 1:30,000