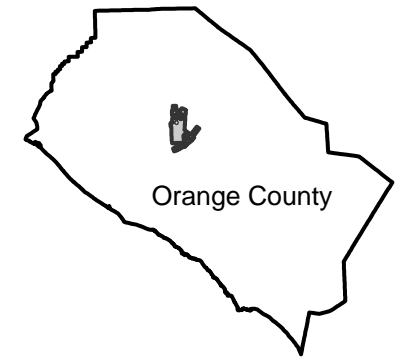


# PAI-Tustin-62

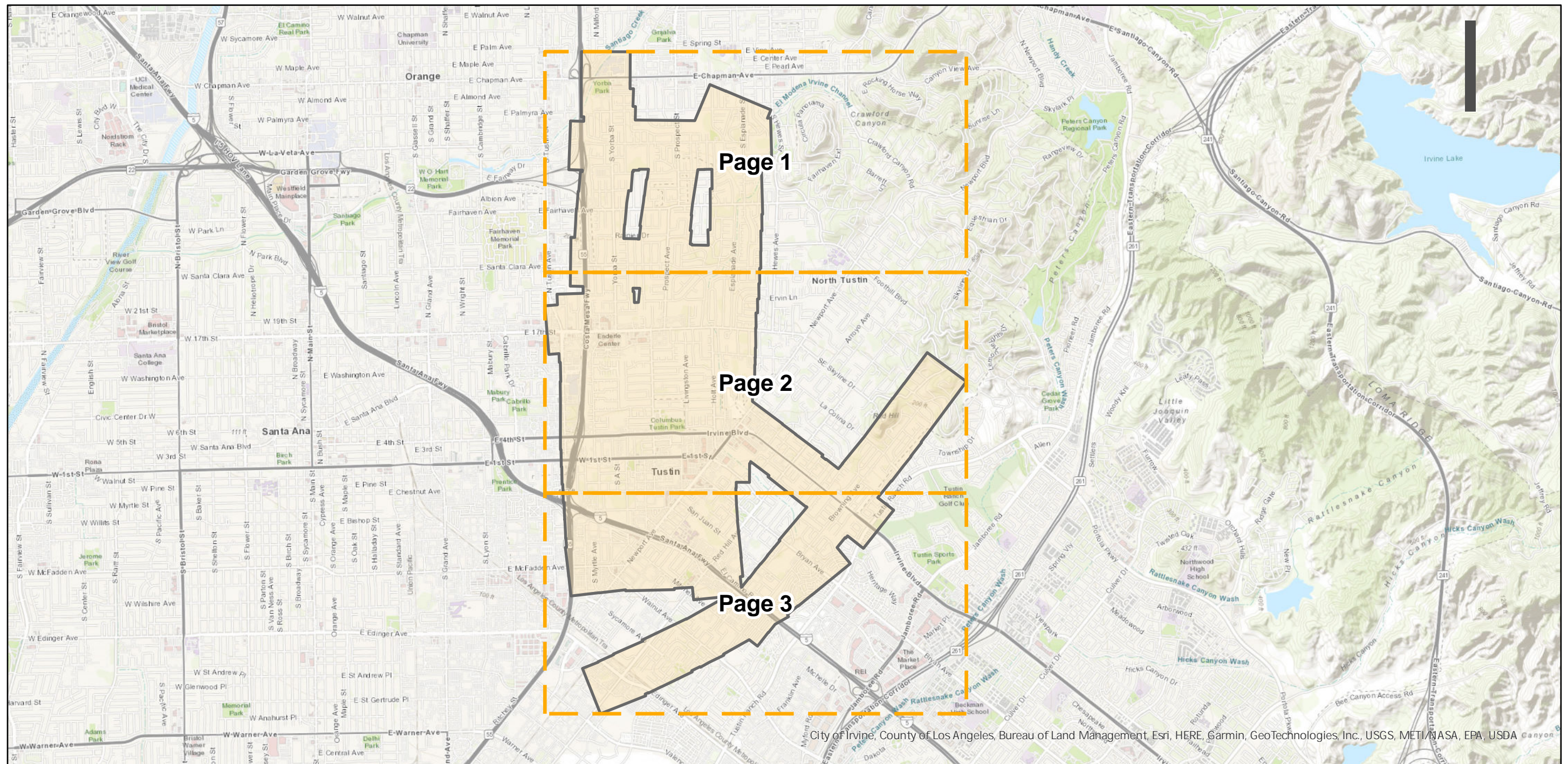
Counties: Orange  
Flight date(s): 03-23-1962 to 04-06-1962  
Scale: 1:2,400  
Overlap: 60%

Note: Imagery of Tustin, California. A multiple roll flight re-catalogued as PAI-Tustin-62. Frames filed under PAI-roll numbers as shown on index sheet.

## FLIGHT LOCATION



Complete Metadata:  
<https://www.library.ucsb.edu/src/airphotos/aerial-photography-information>



0 0.75 1.5 3 Miles

Index to Aerial Photography  
Page Key

Scale of this index: 1:50,000



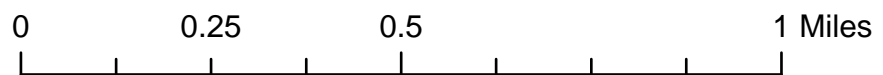
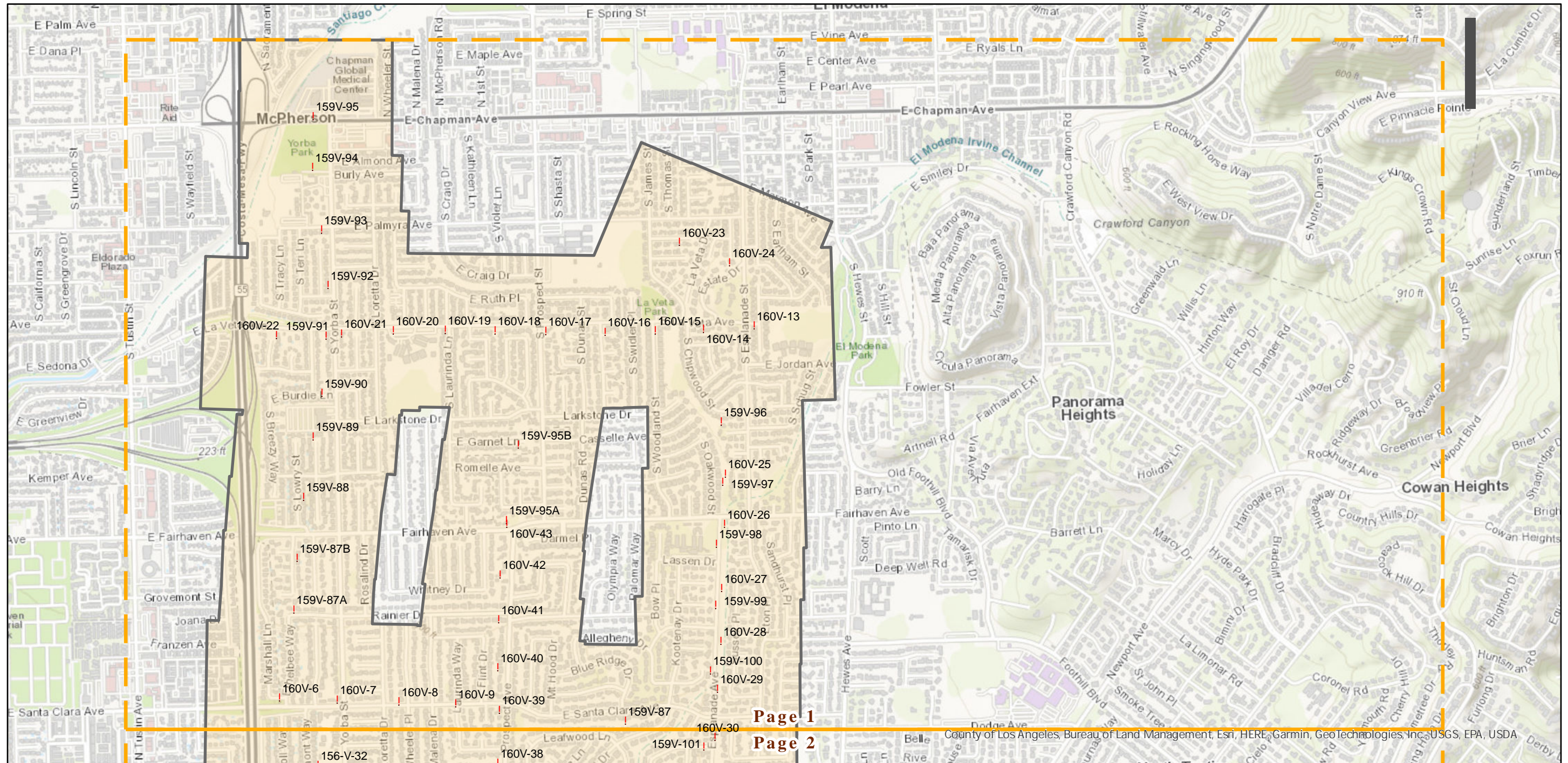
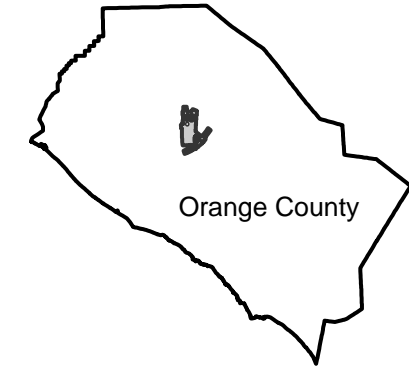
# PAI-Tustin-62

Counties: Orange  
 Flight date(s): 03-23-1962 to 04-06-1962  
 Scale: 1:2,400  
 Overlap: 60%

Complete Metadata:  
<https://www.library.ucsb.edu/src/airphotos/aerial-photography-information>

Note: Imagery of Tustin, California. A multiple roll flight re-catalogued as PAI-Tustin-62. Frames filed under PAI-roll numbers as shown on index sheet.

## FLIGHT LOCATION





# PAI-Tustin-62

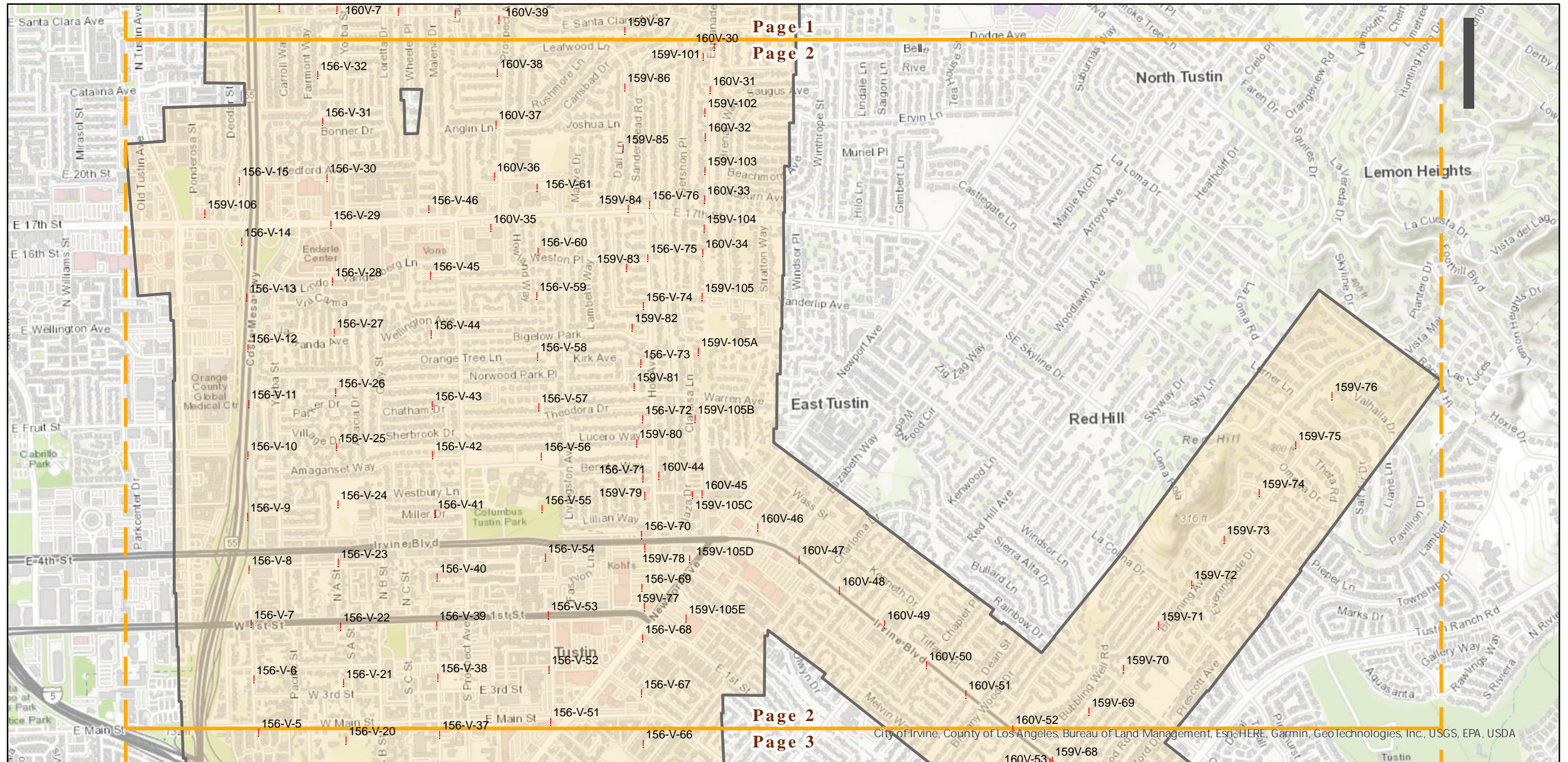
Counties: Orange  
Flight date(s): 03-23-1962 to 04-06-1962  
Scale: 1:2,400  
Overlap: 60%

Note: Imagery of Tustin, California. A multiple roll flight re-catalogued as PAI-Tustin-62. Frames filed under PAI-roll numbers as shown on index sheet.

## FLIGHT LOCATION



Complete Metadata:  
<https://www.library.ucsb.edu/src/airphotos/aerial-photography-information>



0 0.25 0.5 1 Miles

Index to Aerial Photography  
Page 2 of 3

Scale of this index: 1:16,000



# PAI-Tustin-62

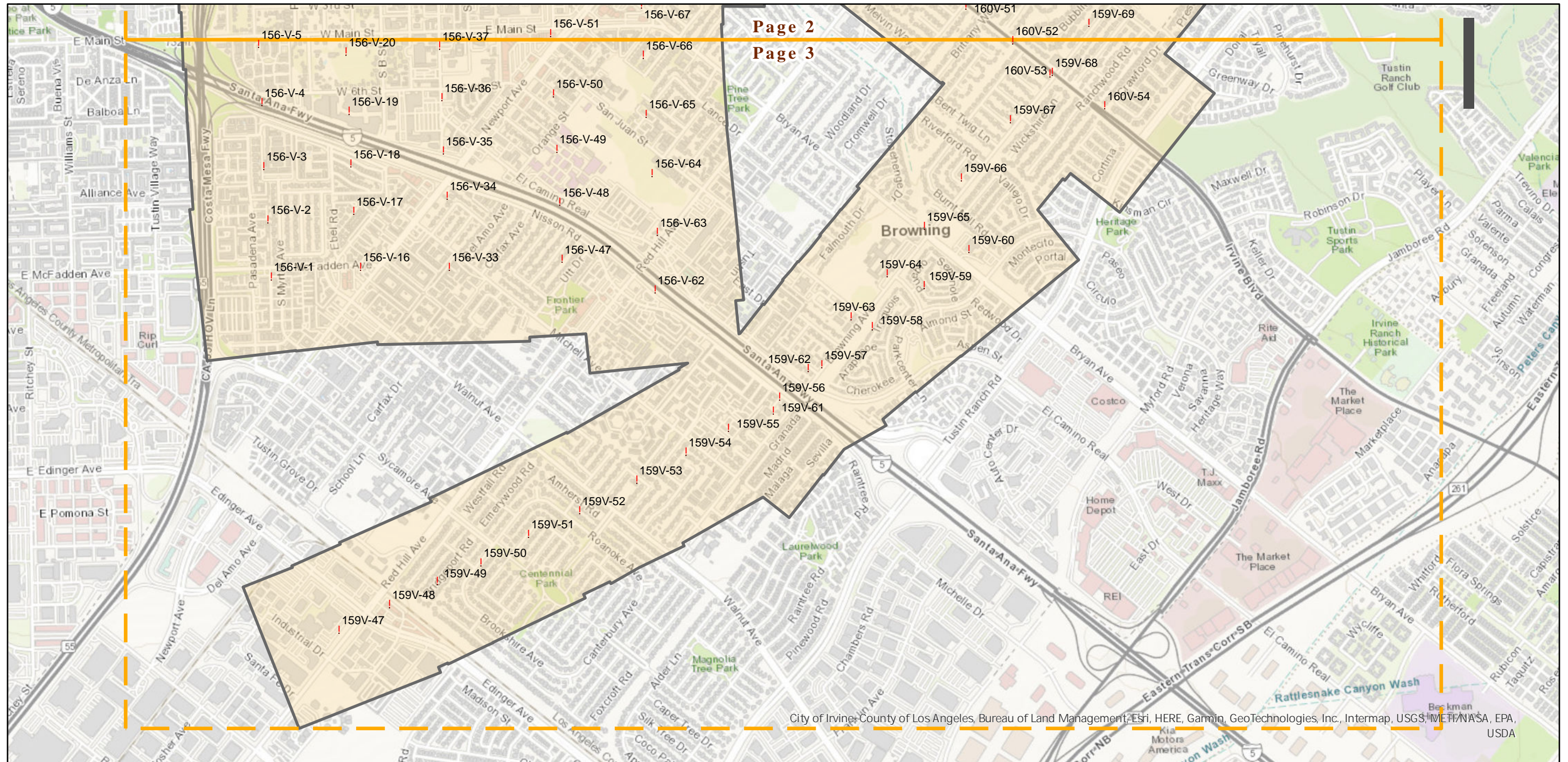
Counties: Orange  
Flight date(s): 03-23-1962 to 04-06-1962  
Scale: 1:2,400  
Overlap: 60%

Note: Imagery of Tustin, California. A multiple roll flight re-catalogued as PAI-Tustin-62. Frames filed under PAI-roll numbers as shown on index sheet.

## FLIGHT LOCATION



Complete Metadata:  
<https://www.library.ucsb.edu/src/airphotos/aerial-photography-information>



0 0.25 0.5 1 Miles

Index to Aerial Photography  
Page 3 of 3

Scale of this index: 1:16,000