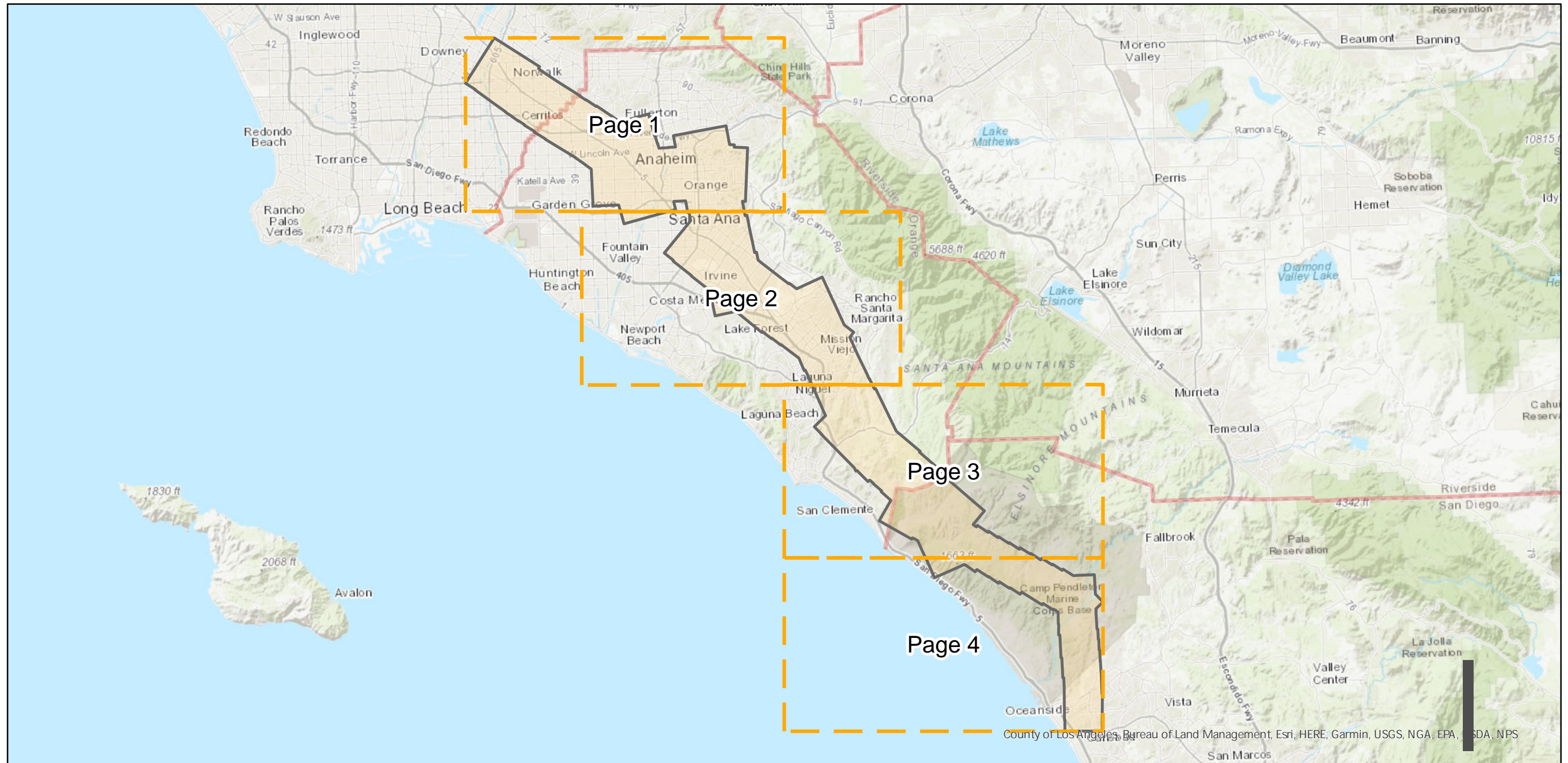
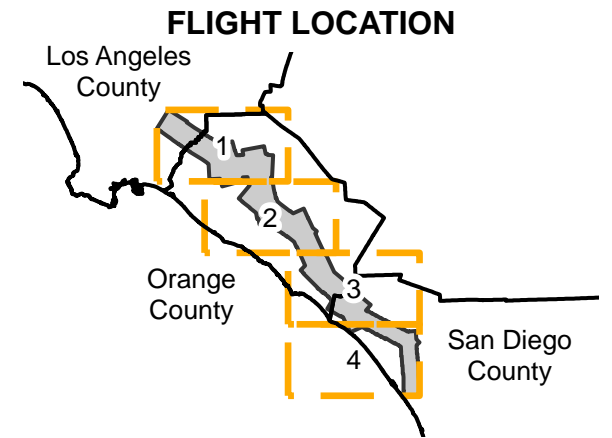


PAI-SDPC-62-and-63 (1:28K)

Counties: Los Angeles, Orange, San Diego
Flight date(s): 11-30-1962 to 02-04-1963
Scale: 1:28,800
Overlap: 60%

Note: Norwalk to Oceanside. Frames filed under PAI-roll numbers as shown on index sheets. Photograph numbers 191V-1 through 191V-92, and 197V-1 through 197V-91.



0 10 20 40 Miles

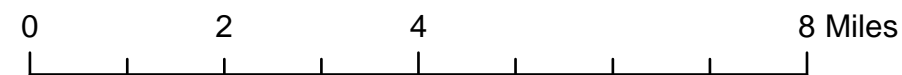
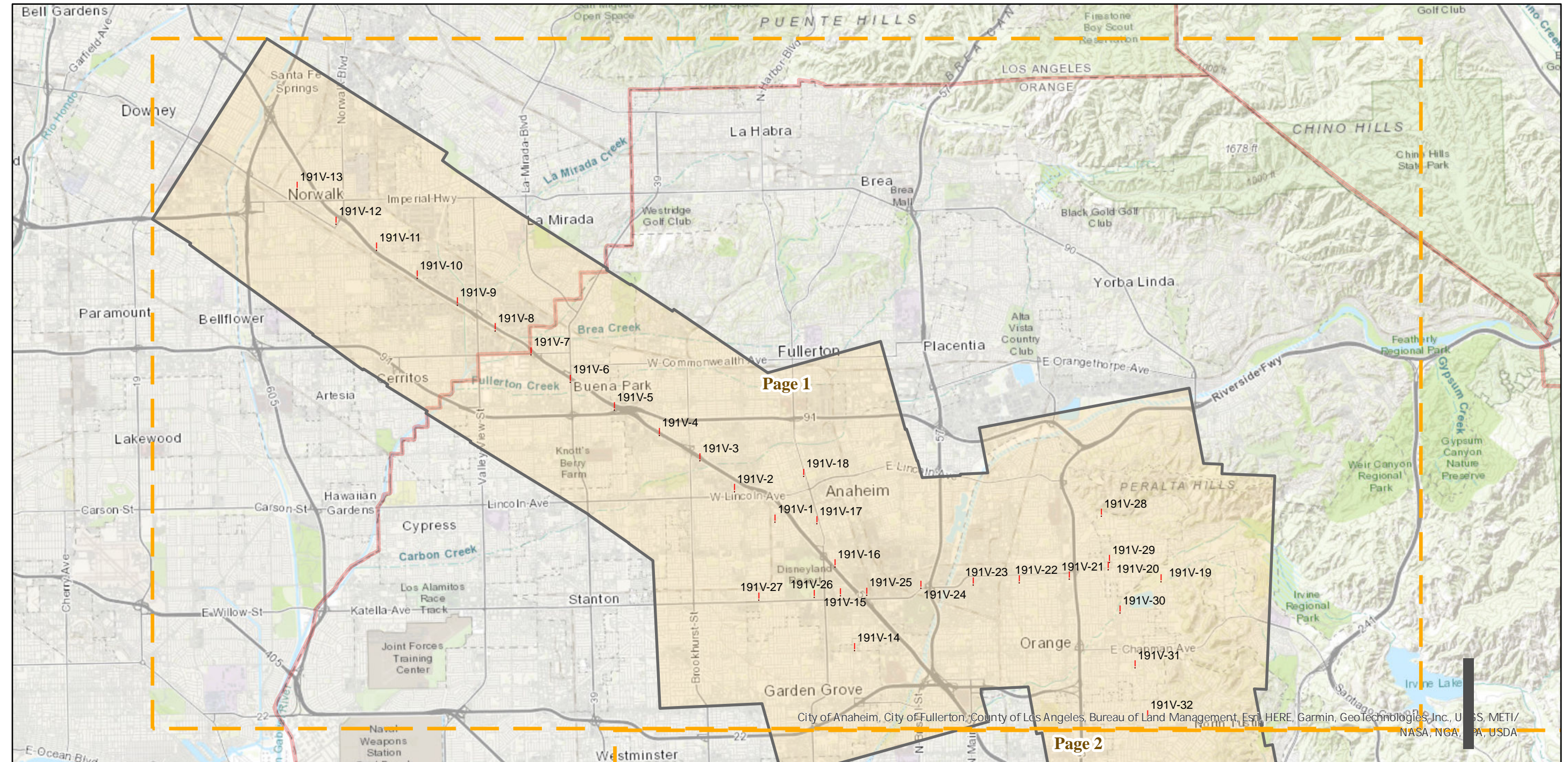
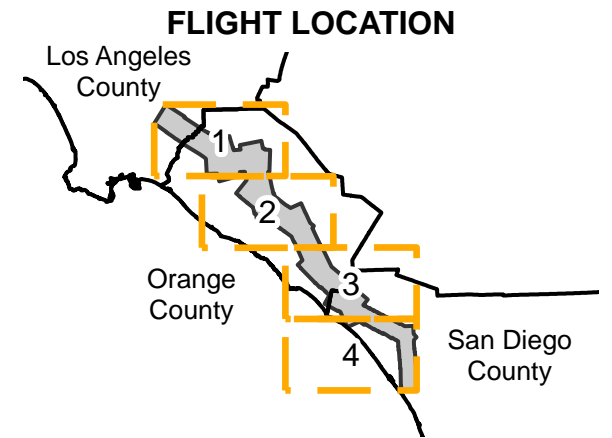
Index to Aerial Photography
Page Key

Scale of this index: 1:500,000

PAI-SDPC-62-and-63 (1:28K)

Counties: Los Angeles, Orange, San Diego
 Flight date(s): 11-30-1962 to 02-04-1963
 Scale: 1:28,800
 Overlap: 60%

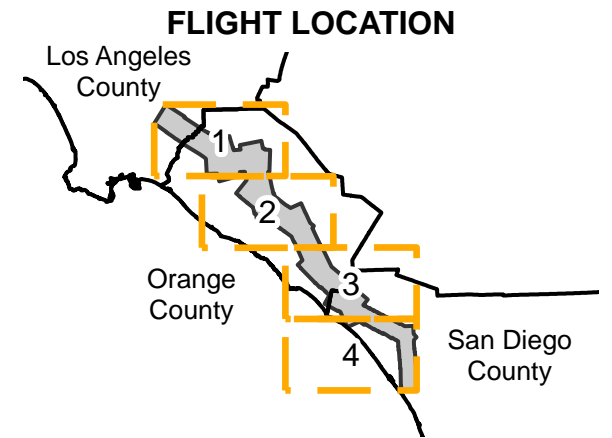
Note: Norwalk to Oceanside. Frames filed under PAI-roll numbers as shown on index sheets. Photograph numbers 191V-1 through 191V-92, and 197V-1 through 197V-91.



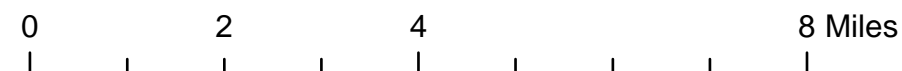
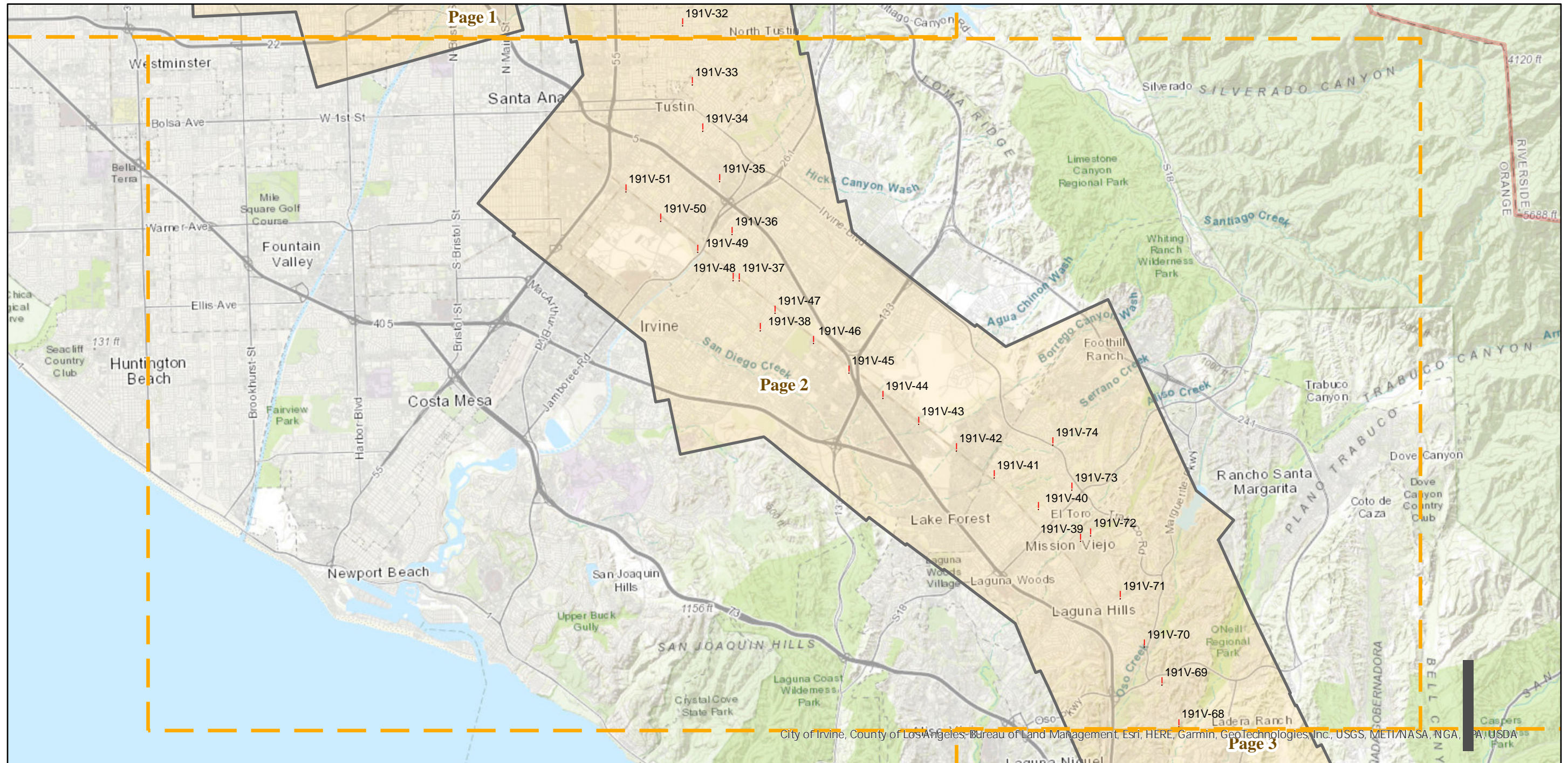
PAI-SDPC-62-and-63 (1:28K)

Counties: Los Angeles, Orange, San Diego
 Flight date(s): 11-30-1962 to 02-04-1963
 Scale: 1:28,800
 Overlap: 60%

Note: Norwalk to Oceanside. Frames filed under PAI-roll numbers as shown on index sheets. Photograph numbers 191V-1 through 191V-92, and 197V-1 through 197V-91.



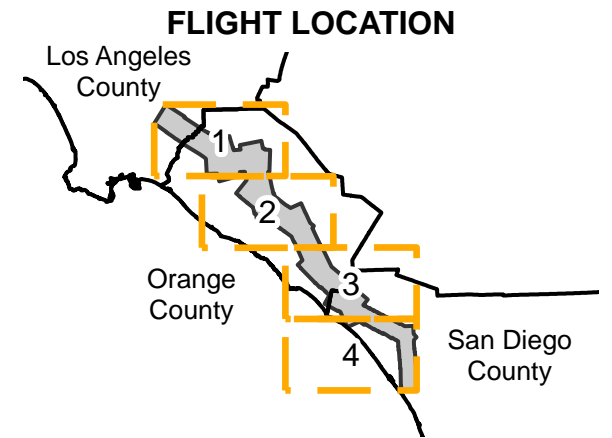
Complete Metadata:
<https://www.library.ucsb.edu/src/airphotos/aerial-photography-information>



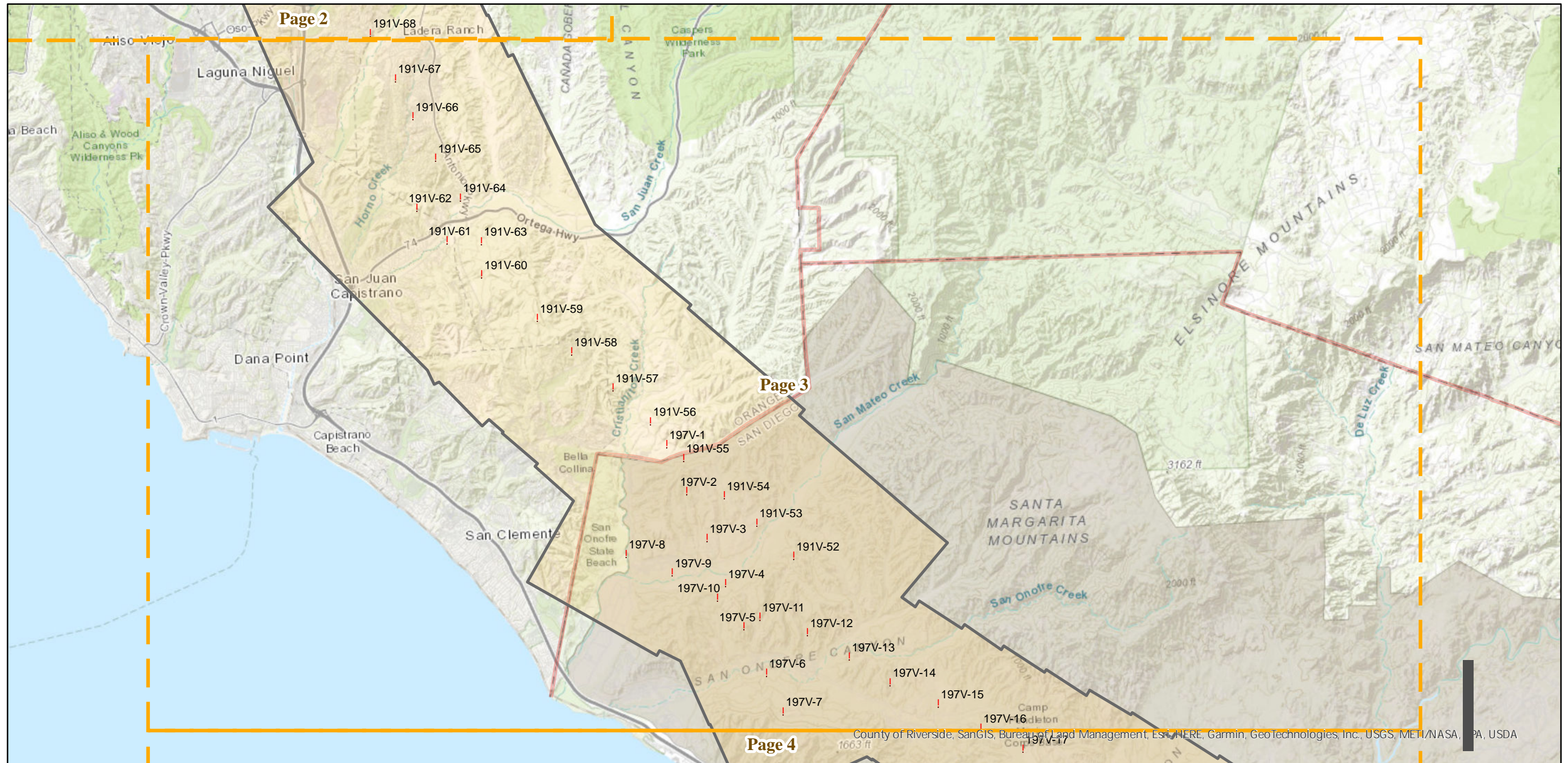
PAI-SDPC-62-and-63 (1:28K)

Counties: Los Angeles, Orange, San Diego
Flight date(s): 11-30-1962 to 02-04-1963
Scale: 1:28,800
Overlap: 60%

Note: Norwalk to Oceanside. Frames filed under PAI-roll numbers as shown on index sheets. Photograph numbers 191V-1 through 191V-92, and 197V-1 through 197V-91.



Complete Metadata:
<https://www.library.ucsb.edu/src/airphotos/aerial-photography-information>



0 2 4 8 Miles

Index to Aerial Photography
Page 3 of 4

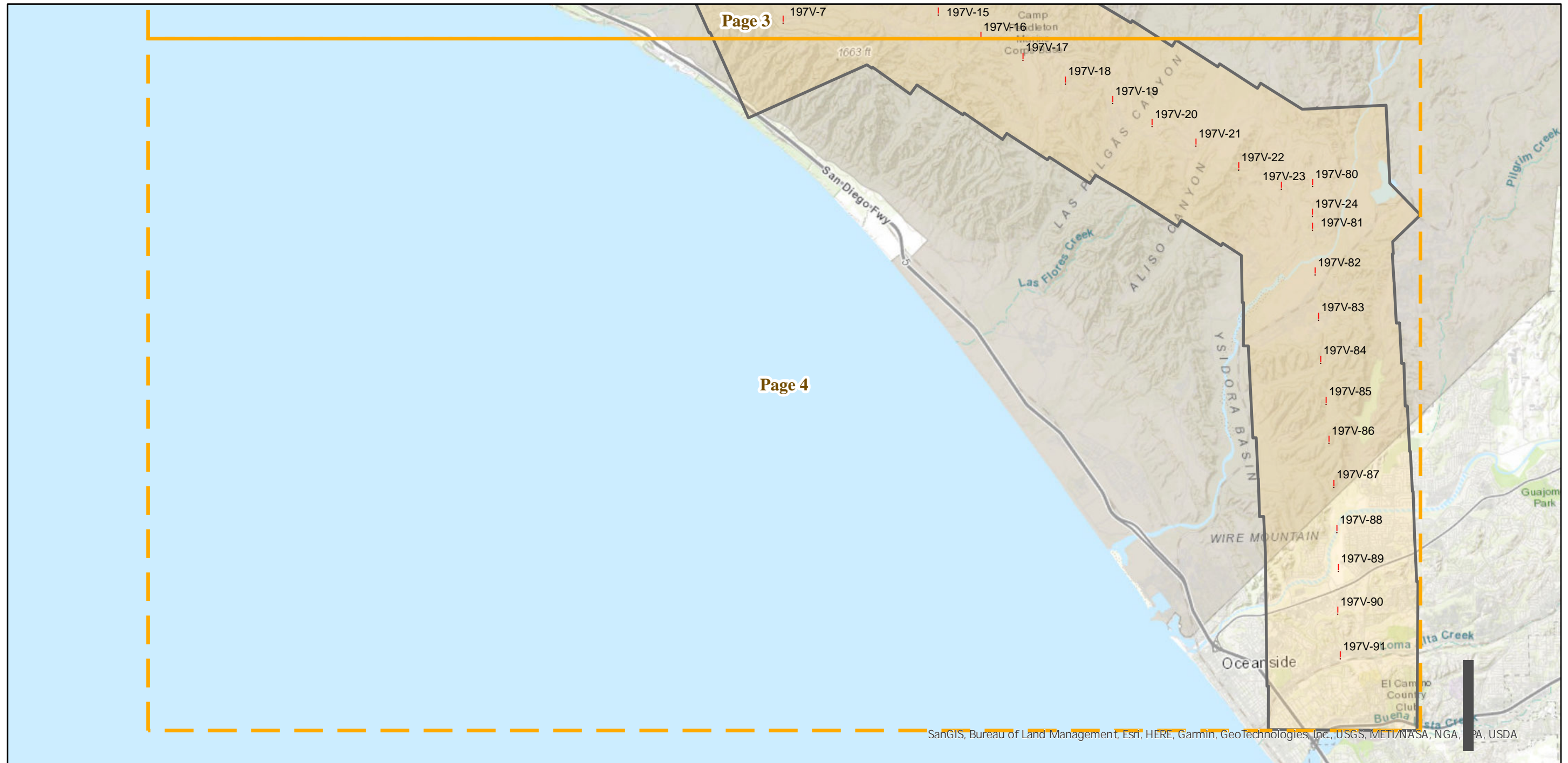
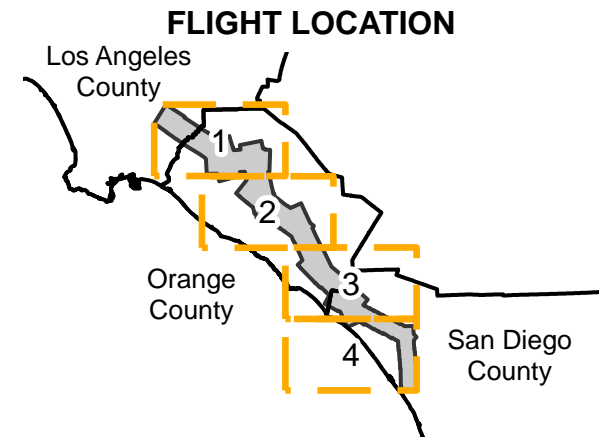
Scale of this index: 1:125,253

PAI-SDPC-62-and-63 (1:28K)

Counties: Los Angeles, Orange, San Diego
Flight date(s): 11-30-1962 to 02-04-1963
Scale: 1:28,800
Overlap: 60%

Complete Metadata:
<https://www.library.ucsb.edu/src/airphotos/aerial-photography-information>

Note: Norwalk to Oceanside. Frames filed under PAI-roll numbers as shown on index sheets. Photograph numbers 191V-1 through 191V-92, and 197V-1 through 197V-91.



SanGIS, Bureau of Land Management, Esri, HERE, Garmin, GeoTechnologies, Inc., USGS, METI/NASA, NGA, EPA, USDA

0 2 4 8 Miles