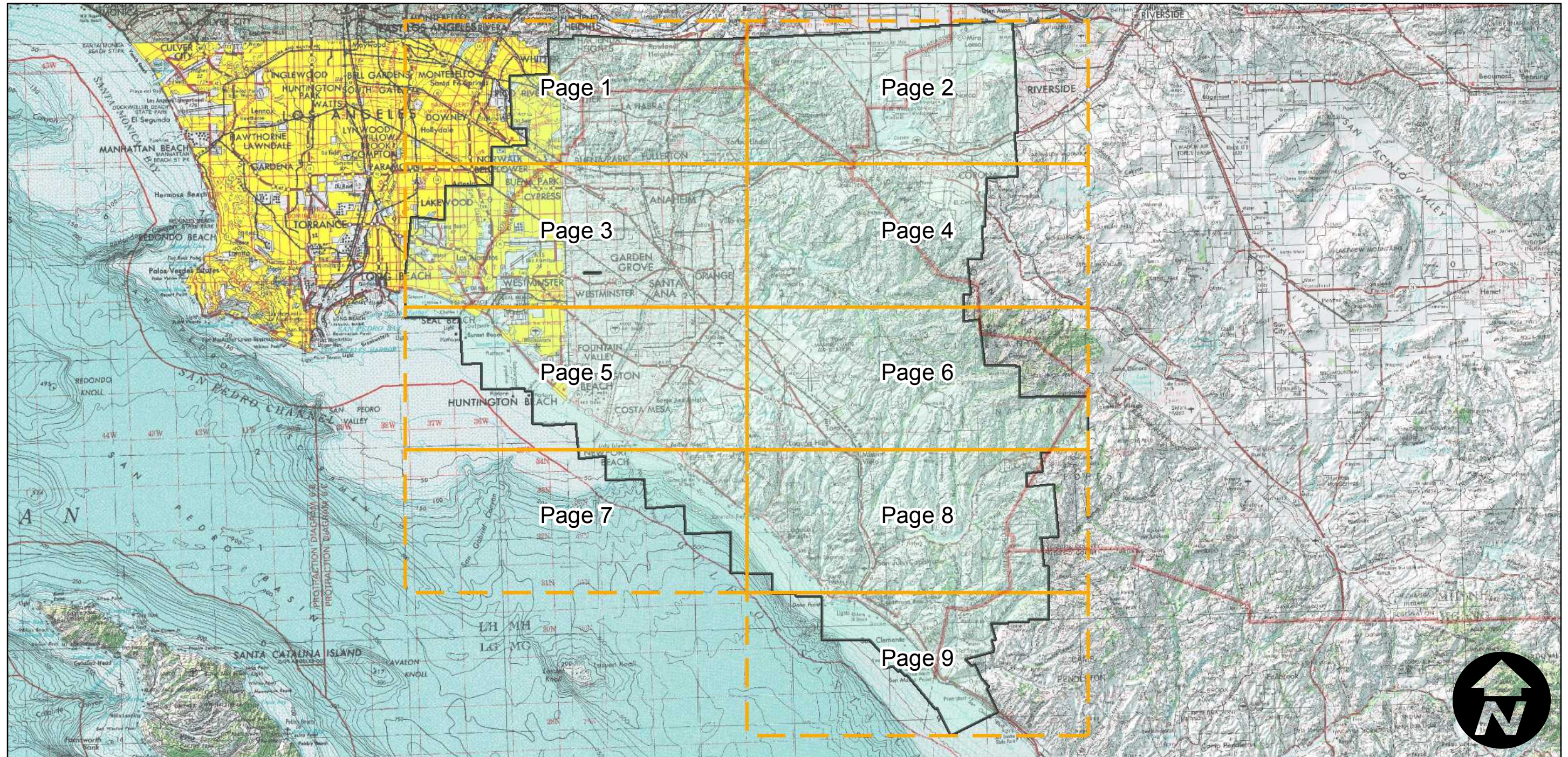
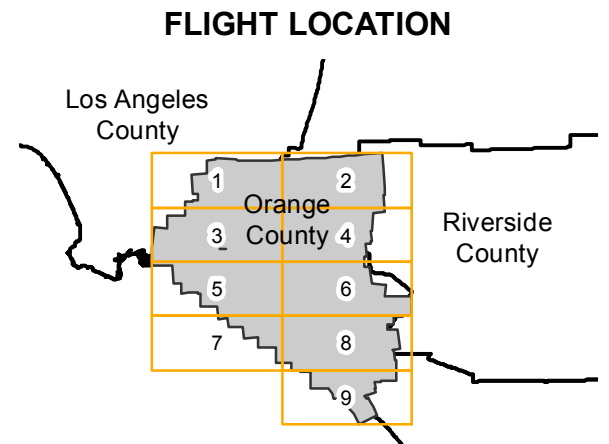


# PAI-OC-65

Counties: Los Angeles, Orange  
Flight date(s): 02-10-1965 to 03-29-1965  
Scale: 1:24000  
Overlap: 60%

Note:  
Imagery filed by PAI-roll numbers: PAI-250V, PAI-251V,  
PAI-252V, PAI-253V. Frames 250V-14 through 250V-177,  
251V-1 through 251V-124, 252V-1 through 252V-93, and  
253V-60 through 253V-82.

Complete Metadata:  
<http://www.library.ucsb.edu/mil/aerial-photography-tools>



0 5 10 20 Miles

Index to Aerial Photography  
Page Key

Scale of this index: 1:425,000

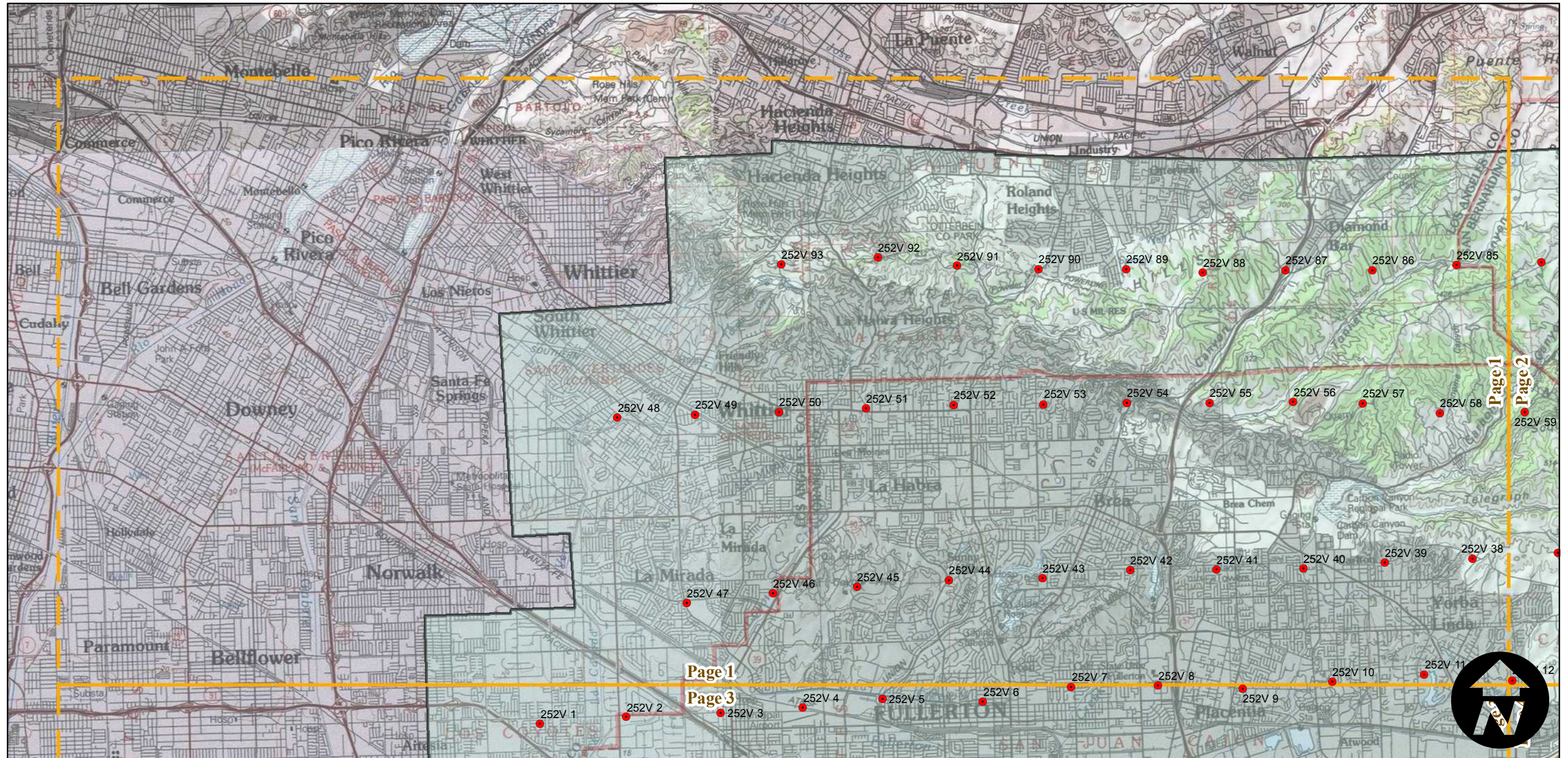
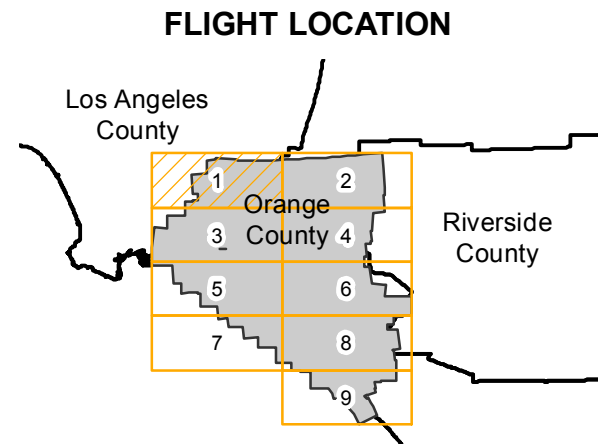


# PAI-OC-65

Counties: Los Angeles, Orange  
Flight date(s): 02-10-1965 to 03-29-1965  
Scale: 1:24000  
Overlap: 60%

Note:  
Imagery filed by PAI-roll numbers: PAI-250V, PAI-251V,  
PAI-252V, PAI-253V. Frames 250V-14 through 250V-177,  
251V-1 through 251V-124, 252V-1 through 252V-93, and  
253V-60 through 253V-82.

Complete Metadata:  
<http://www.library.ucsb.edu/mil/aerial-photography-tools>



0 1.25 2.5 5 Miles

Index to Aerial Photography  
Page 1 of 9

Scale of this index: 1:100,000

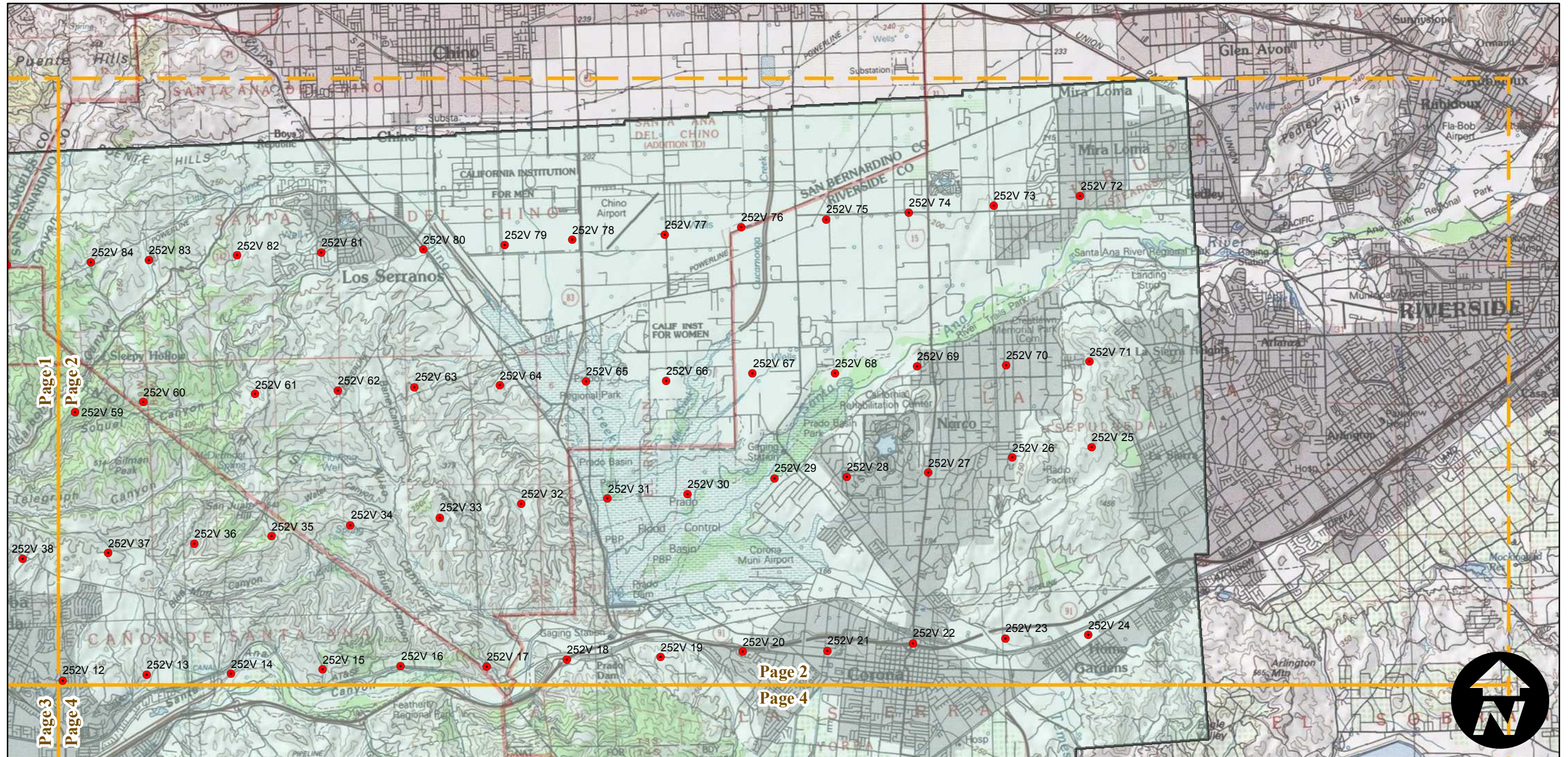
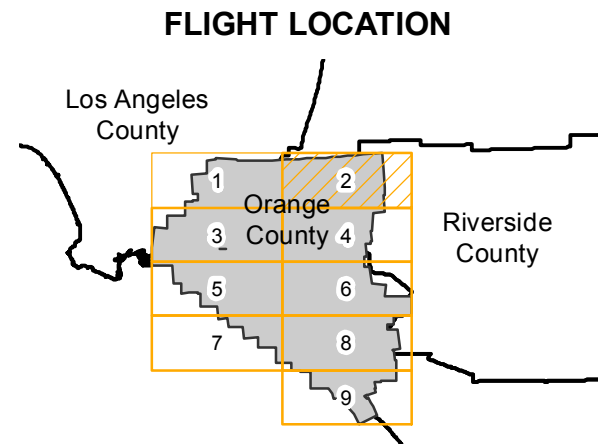


# PAI-OC-65

Counties: Los Angeles, Orange  
Flight date(s): 02-10-1965 to 03-29-1965  
Scale: 1:24000  
Overlap: 60%

Note:  
Imagery filed by PAI-roll numbers: PAI-250V, PAI-251V,  
PAI-252V, PAI-253V. Frames 250V-14 through 250V-177,  
251V-1 through 251V-124, 252V-1 through 252V-93, and  
253V-60 through 253V-82.

Complete Metadata:  
<http://www.library.ucsb.edu/mil/aerial-photography-tools>



0 1.25 2.5 5 Miles

Scale of this index: 1:100,000

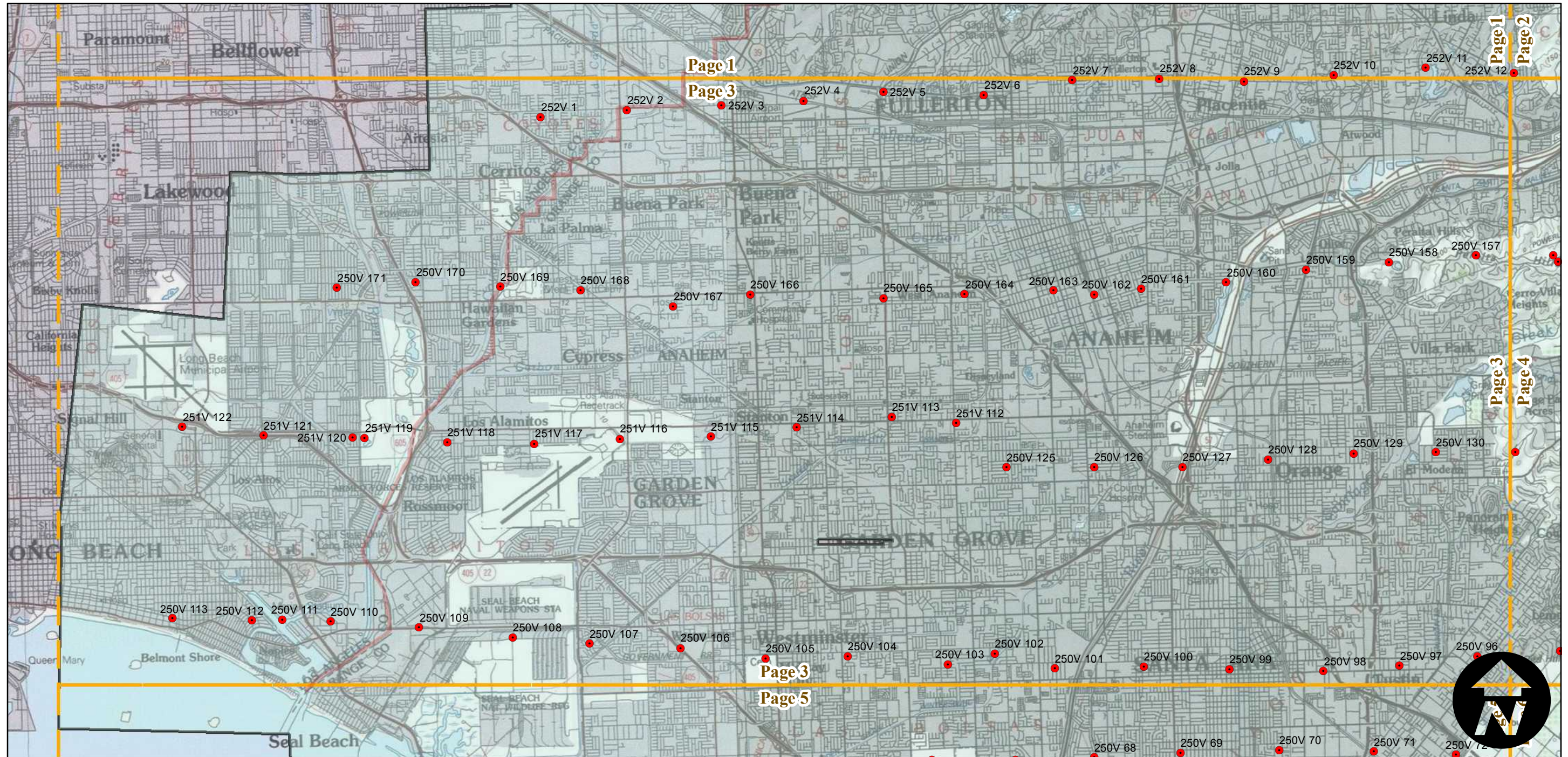
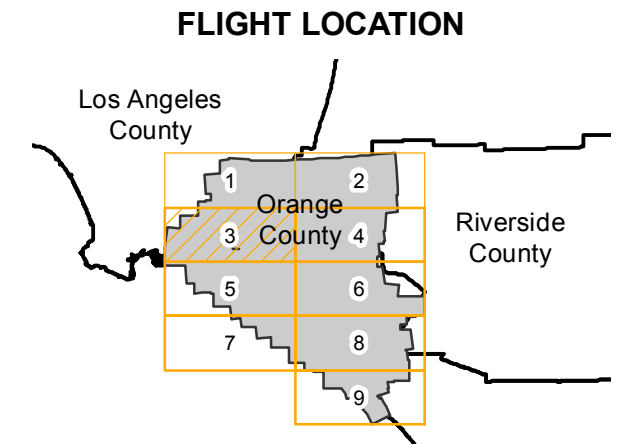


# PAI-OC-65

Counties: Los Angeles, Orange  
Flight date(s): 02-10-1965 to 03-29-1965  
Scale: 1:24000  
Overlap: 60%

Note:  
Imagery filed by PAI-roll numbers: PAI-250V, PAI-251V,  
PAI-252V, PAI-253V. Frames 250V-14 through 250V-177,  
251V-1 through 251V-124, 252V-1 through 252V-93, and  
253V-60 through 253V-82.

Complete Metadata:  
<http://www.library.ucsb.edu/mil/aerial-photography-tools>



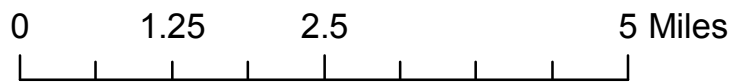
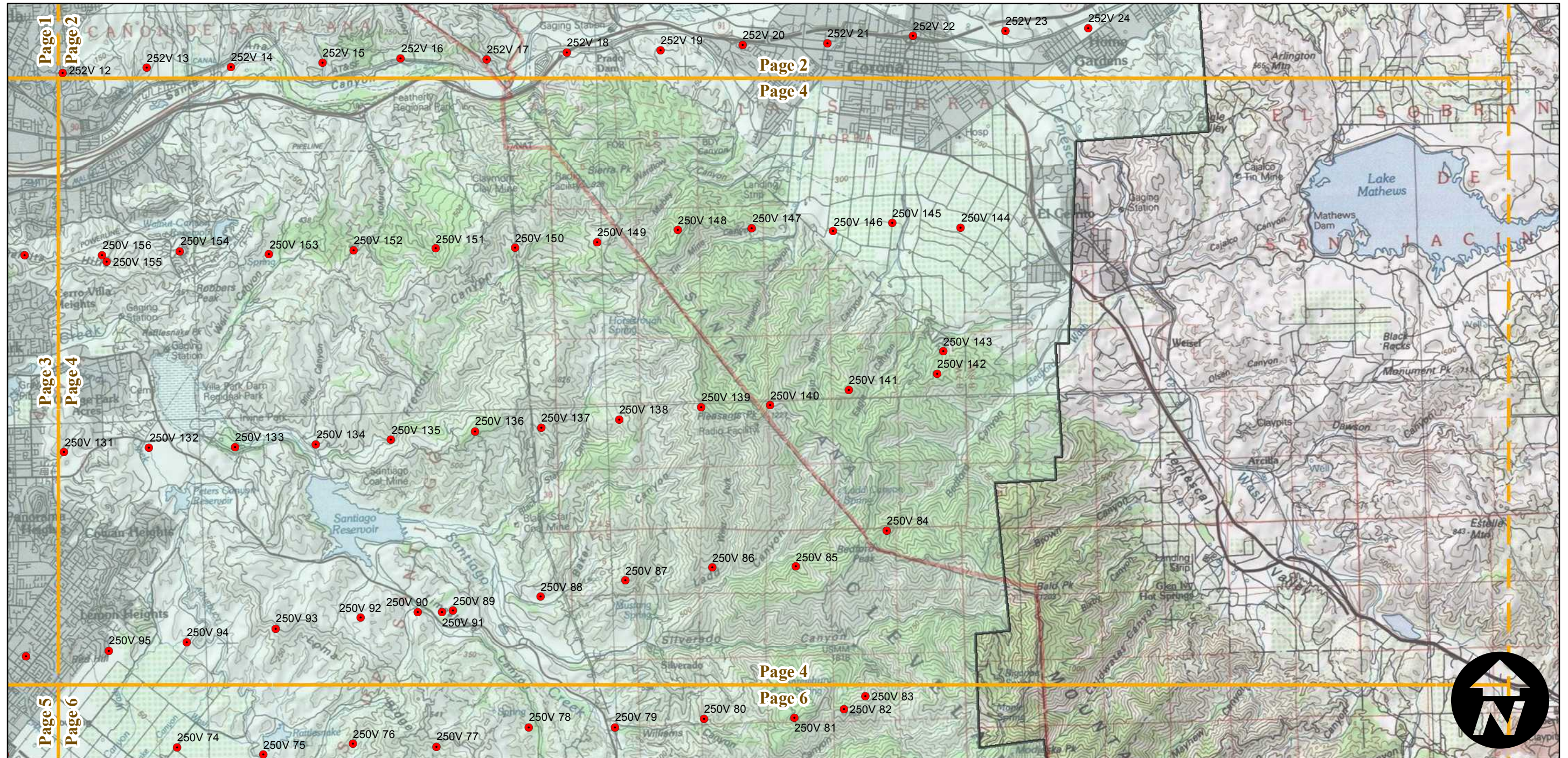
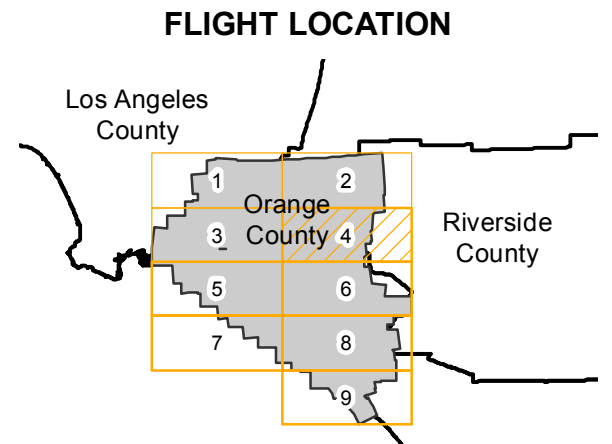


# PAI-OC-65

Counties: Los Angeles, Orange  
Flight date(s): 02-10-1965 to 03-29-1965  
Scale: 1:24000  
Overlap: 60%

Note:  
Imagery filed by PAI-roll numbers: PAI-250V, PAI-251V,  
PAI-252V, PAI-253V. Frames 250V-14 through 250V-177,  
251V-1 through 251V-124, 252V-1 through 252V-93, and  
253V-60 through 253V-82.

Complete Metadata:  
<http://www.library.ucsb.edu/mil/aerial-photography-tools>



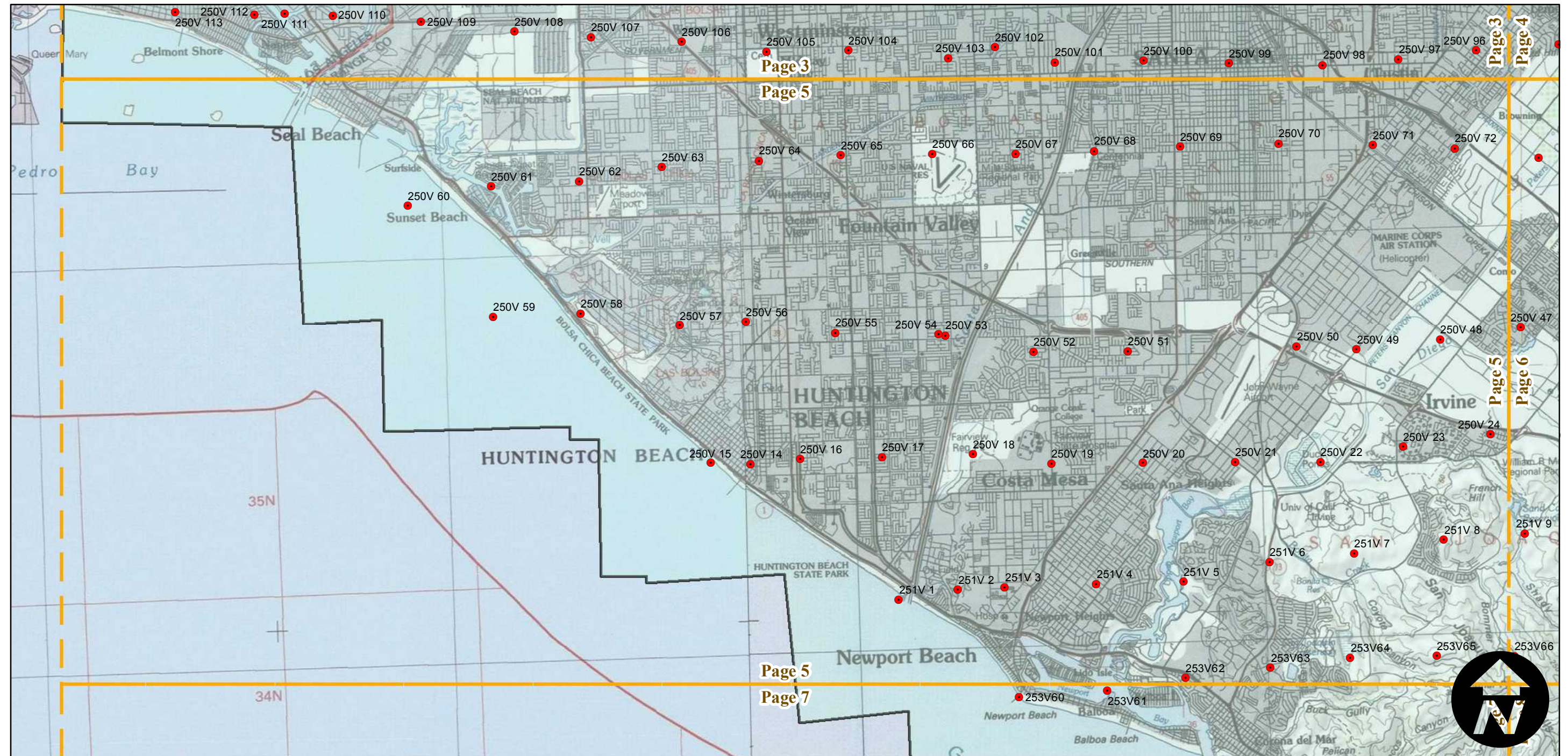
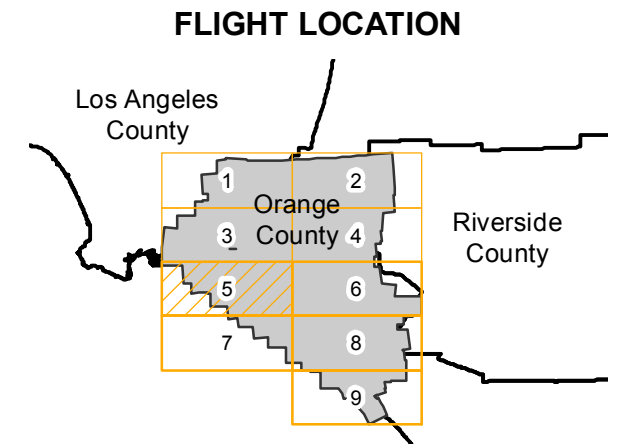


# PAI-OC-65

Counties: Los Angeles, Orange  
Flight date(s): 02-10-1965 to 03-29-1965  
Scale: 1:24000  
Overlap: 60%

Complete Metadata:  
<http://www.library.ucsb.edu/mil/aerial-photography-tools>

Note:  
Imagery filed by PAI-roll numbers: PAI-250V, PAI-251V,  
PAI-252V, PAI-253V. Frames 250V-14 through 250V-177,  
251V-1 through 251V-124, 252V-1 through 252V-93, and  
253V-60 through 253V-82.



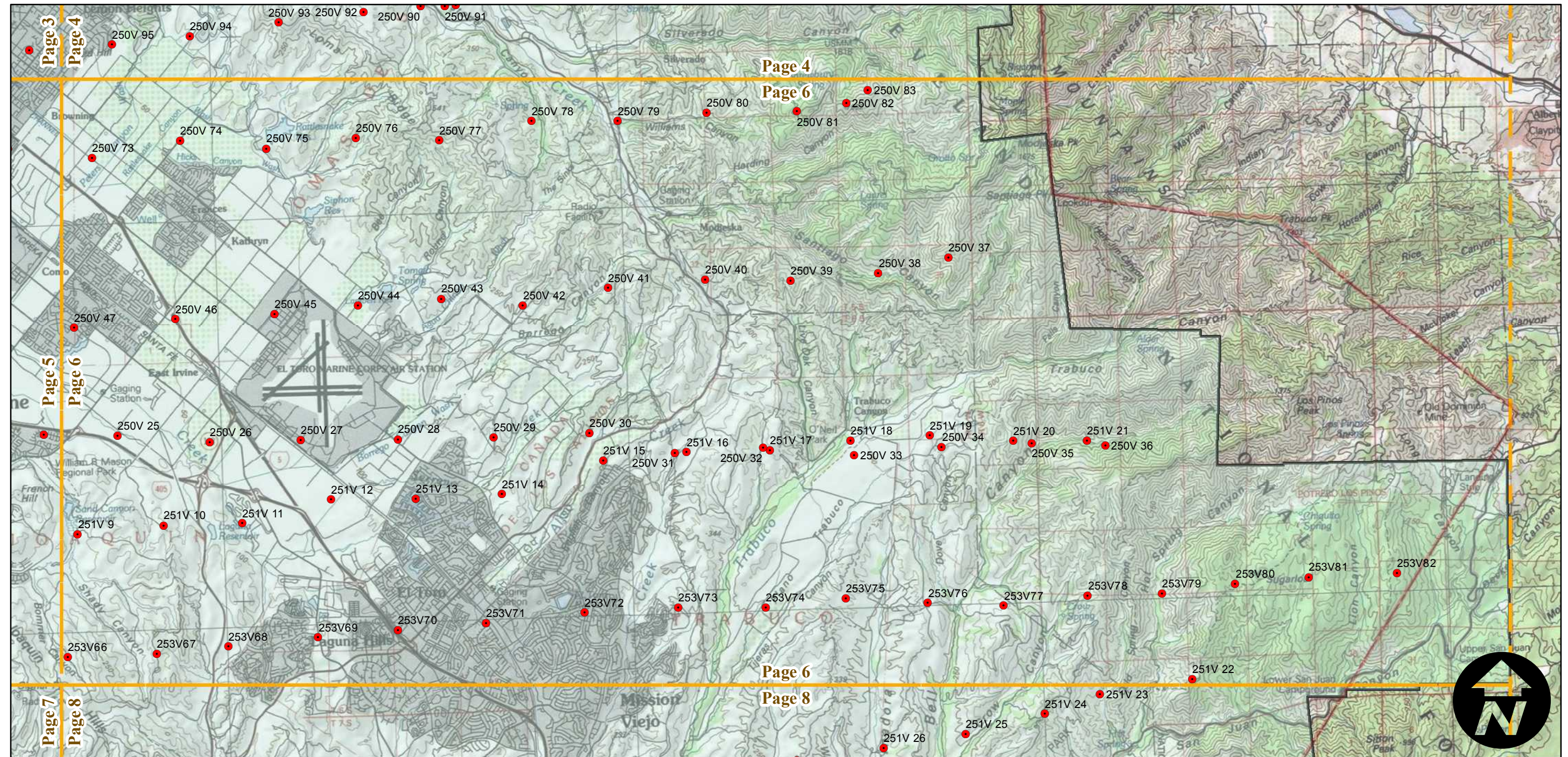
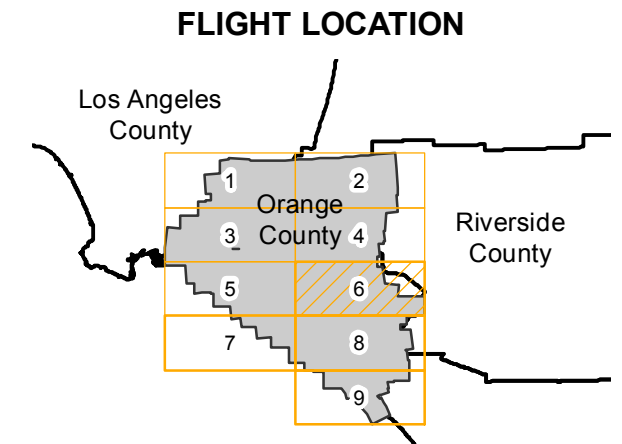


# PAI-OC-65

Counties: Los Angeles, Orange  
Flight date(s): 02-10-1965 to 03-29-1965  
Scale: 1:24000  
Overlap: 60%

Note:  
Imagery filed by PAI-roll numbers: PAI-250V, PAI-251V,  
PAI-252V, PAI-253V. Frames 250V-14 through 250V-177,  
251V-1 through 251V-124, 252V-1 through 252V-93, and  
253V-60 through 253V-82.

Complete Metadata:  
<http://www.library.ucsb.edu/mil/aerial-photography-tools>



0 1.25 2.5 5 Miles

Index to Aerial Photography  
Page 6 of 9

Scale of this index: 1:100,000

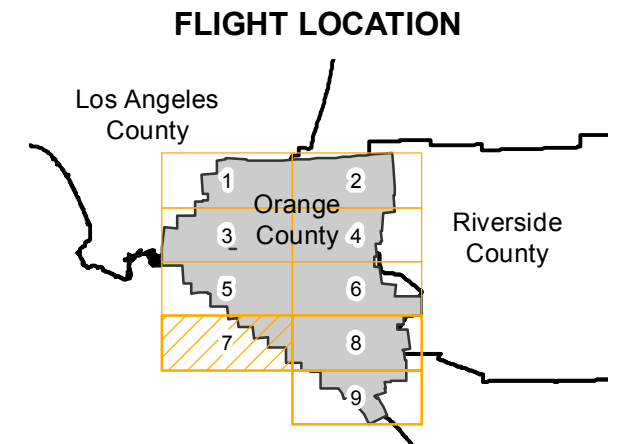


# PAI-OC-65

Counties: Los Angeles, Orange  
Flight date(s): 02-10-1965 to 03-29-1965  
Scale: 1:24000  
Overlap: 60%

Complete Metadata:  
<http://www.library.ucsb.edu/mil/aerial-photography-tools>

Note:  
Imagery filed by PAI-roll numbers: PAI-250V, PAI-251V, PAI-252V, PAI-253V. Frames 250V-14 through 250V-177, 251V-1 through 251V-124, 252V-1 through 252V-93, and 253V-60 through 253V-82.



0 1.25 2.5 5 Miles

Index to Aerial Photography  
Page 7 of 9

Scale of this index: 1:100,000

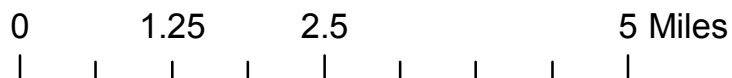
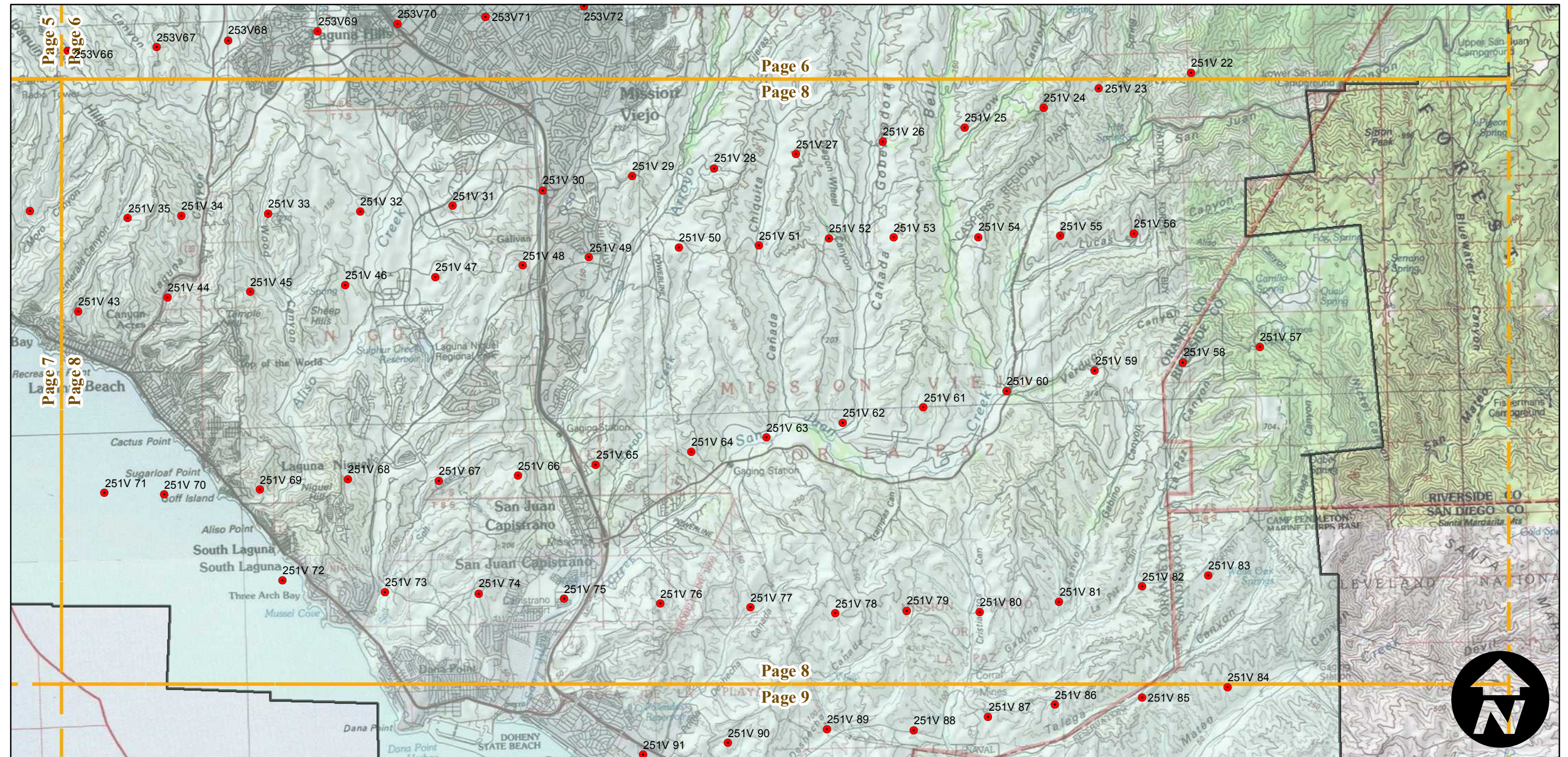
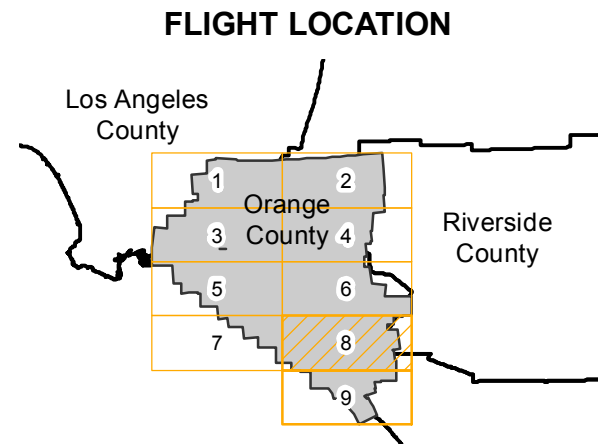


# PAI-OC-65

Counties: Los Angeles, Orange  
Flight date(s): 02-10-1965 to 03-29-1965  
Scale: 1:24000  
Overlap: 60%

Note:  
Imagery filed by PAI-roll numbers: PAI-250V, PAI-251V,  
PAI-252V, PAI-253V. Frames 250V-14 through 250V-177,  
251V-1 through 251V-124, 252V-1 through 252V-93, and  
253V-60 through 253V-82.

Complete Metadata:  
<http://www.library.ucsb.edu/mil/aerial-photography-tools>



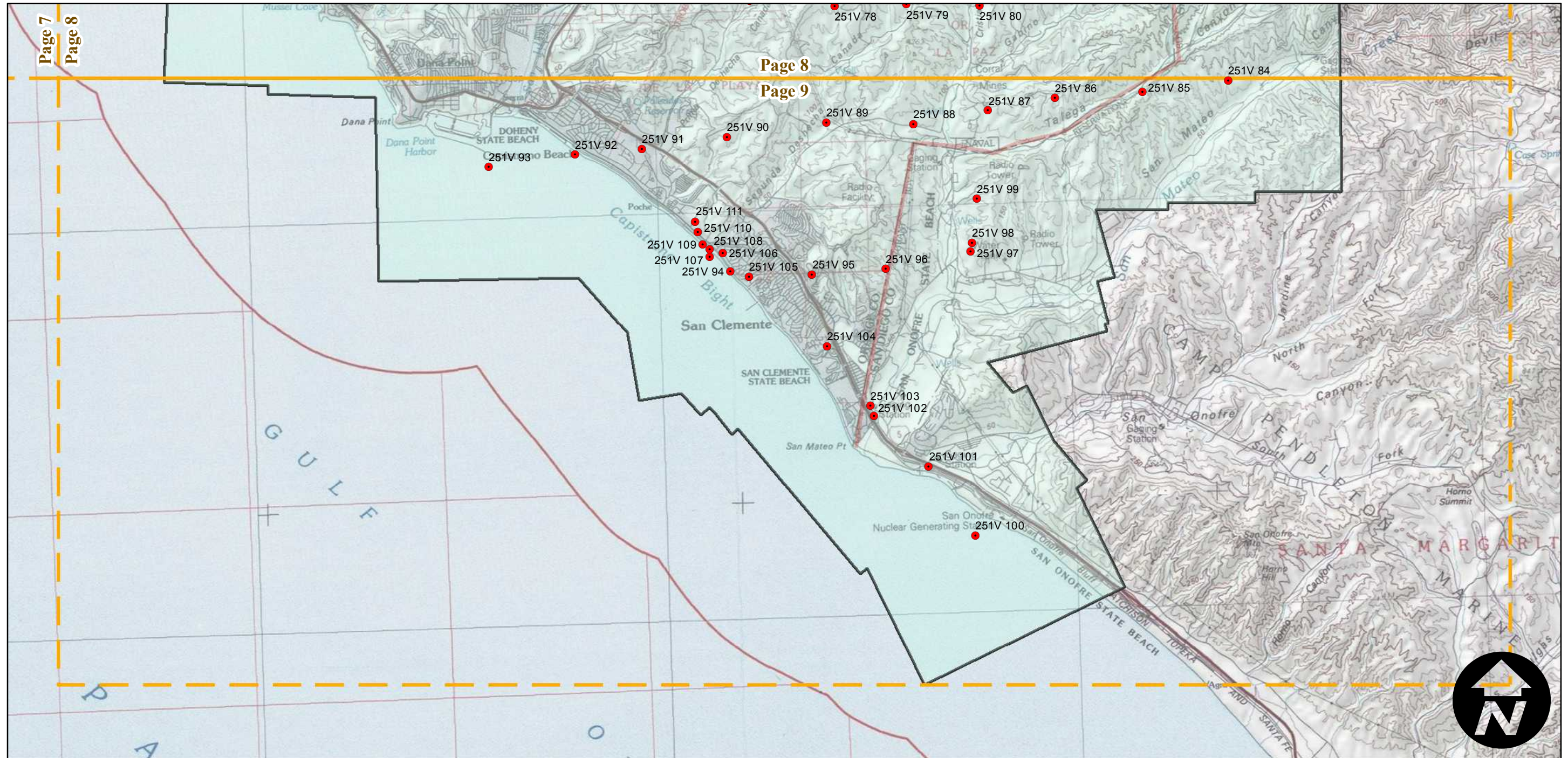
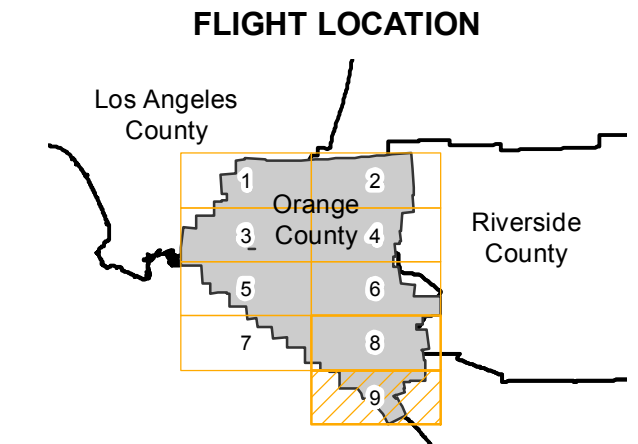


# PAI-OC-65

Counties: Los Angeles, Orange  
Flight date(s): 02-10-1965 to 03-29-1965  
Scale: 1:24000  
Overlap: 60%

Complete Metadata:  
<http://www.library.ucsb.edu/mil/aerial-photography-tools>

Note:  
Imagery filed by PAI-roll numbers: PAI-250V, PAI-251V, PAI-252V, PAI-253V. Frames 250V-14 through 250V-177, 251V-1 through 251V-124, 252V-1 through 252V-93, and 253V-60 through 253V-82.



0 1.25 2.5 5 Miles

Index to Aerial Photography  
Page 9 of 9

Scale of this index: 1:100,000