

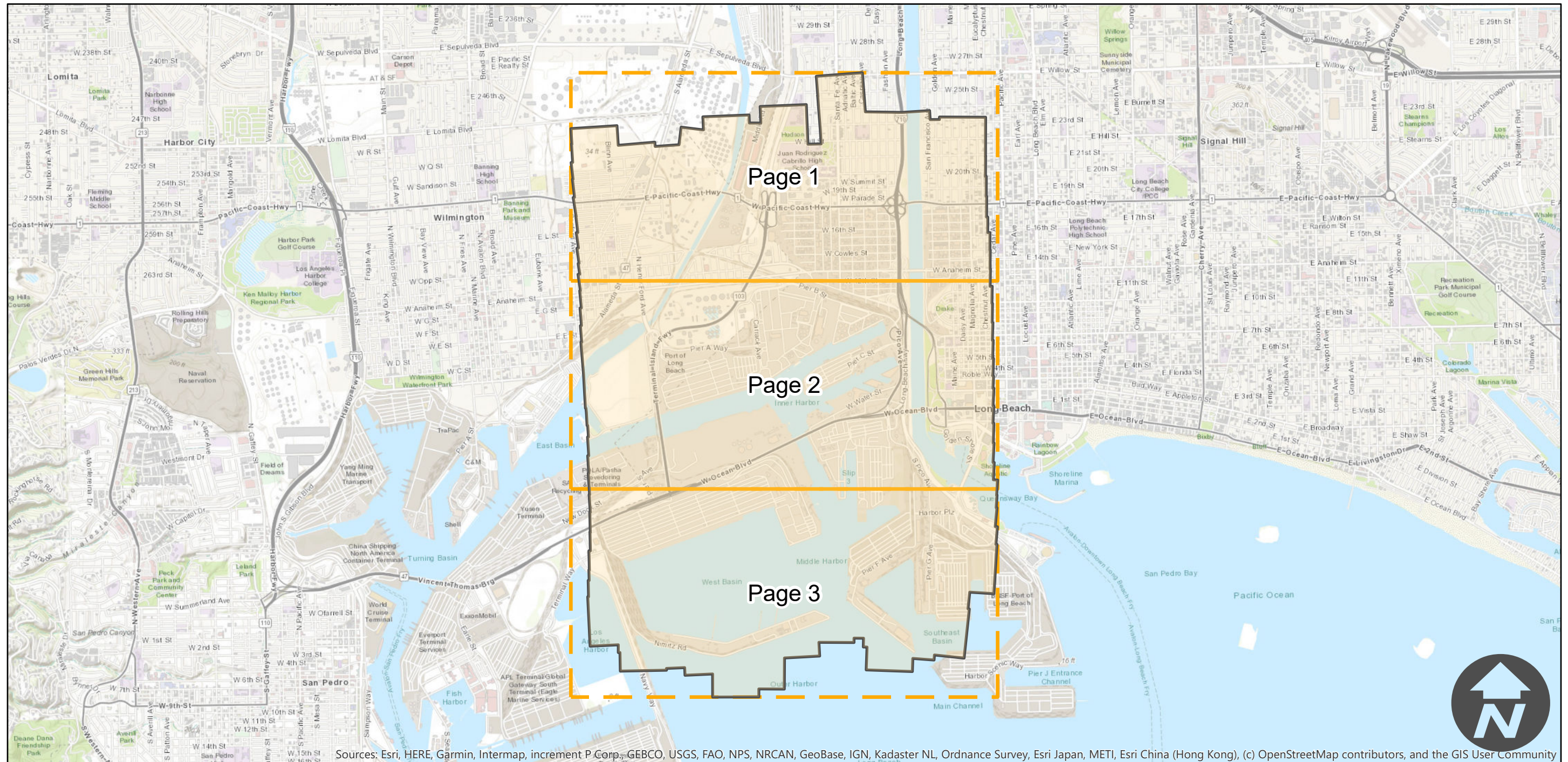
# PAI-LBH-62

Counties: Los Angeles  
Flight date(s): 01-30-1962  
Scale: 1:2,400  
Overlap: 60%

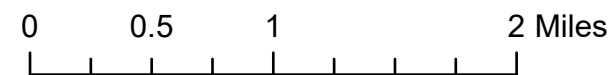
Complete Metadata:  
<https://www.library.ucsb.edu/src/airphotos/aerial-photography-information>

Note: Long Beach, Long Beach Harbor area. Frames filed under PAI-roll numbers as shown on index. PAI-LBH-62 replaces records for PAI-152V and PAI-153V.

## FLIGHT LOCATION



Sources: Esri, HERE, Garmin, Intermap, increment P Corp., GEBCO, USGS, FAO, NPS, NRCAN, GeoBase, IGN, Kadaster NL, Ordnance Survey, Esri Japan, METI, Esri China (Hong Kong), (c) OpenStreetMap contributors, and the GIS User Community



Index to Aerial Photography  
Page Key

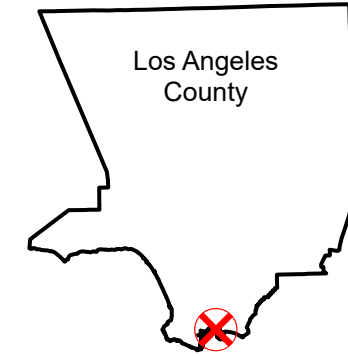
Scale of this index: 1:50,000

# PAI-LBH-62

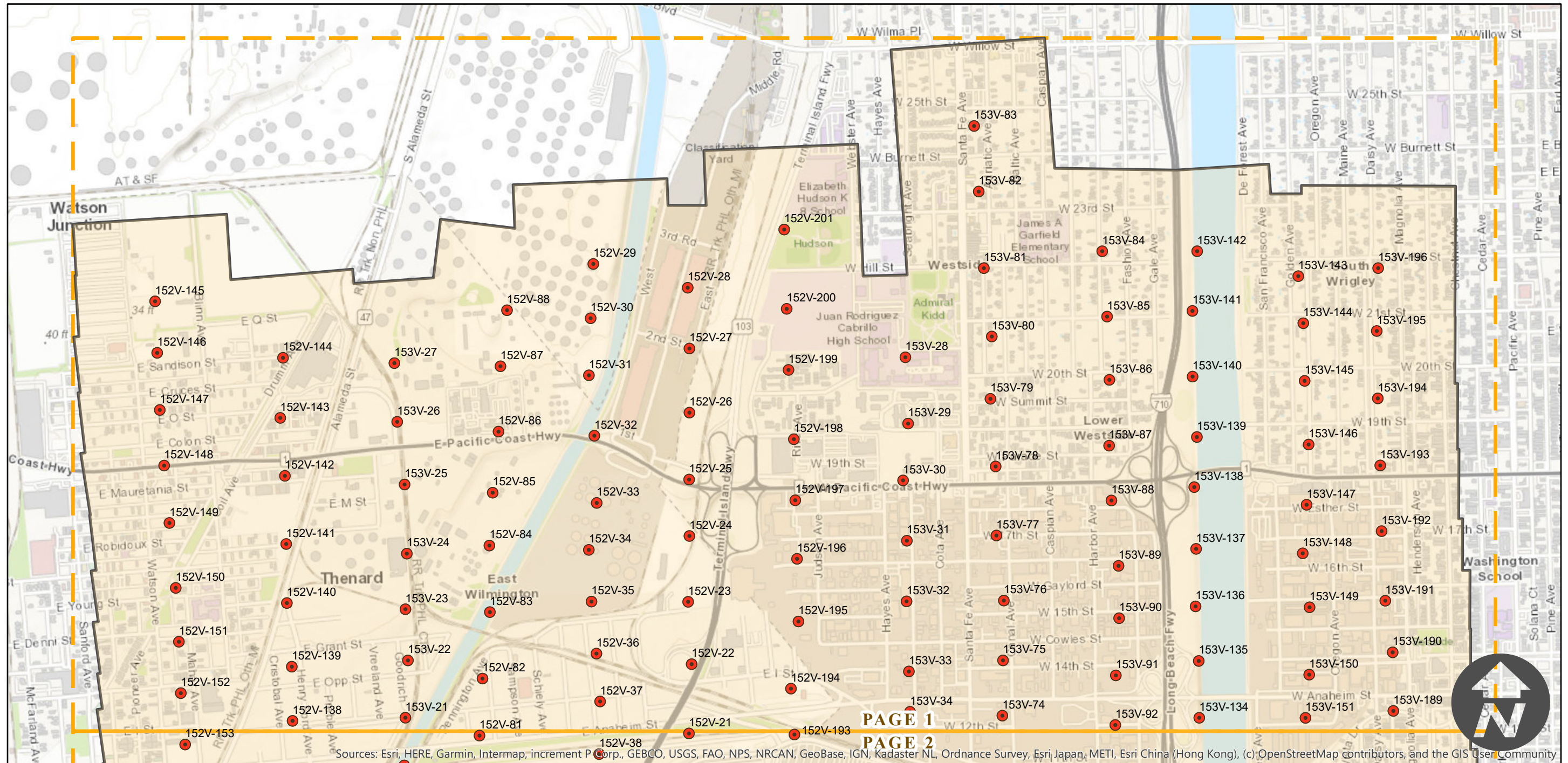
Counties: Los Angeles  
Flight date(s): 01-30-1962  
Scale: 1:2,400  
Overlap: 60%

Note: Long Beach, Long Beach Harbor area. Frames filed under PAI-roll numbers as shown on index. PAI-LBH-62 replaces records for PAI-152V and PAI-153V.

## FLIGHT LOCATION

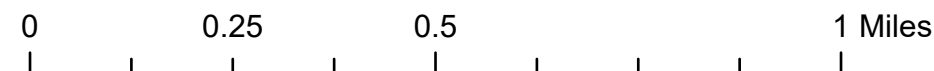


Complete Metadata:  
<https://www.library.ucsb.edu/src/airphotos/aerial-photography-information>



PAGE 1  
PAGE 2

Sources: Esri, HERE, Garmin, Intermap, increment P Corp., GEBCO, USGS, FAO, NPS, NRCAN, GeoBase, IGN, Kadaster NL, Ordnance Survey, Esri Japan, METI, Esri China (Hong Kong), (c)OpenStreetMap contributors, and the GIS User Community



# PAI-LBH-62

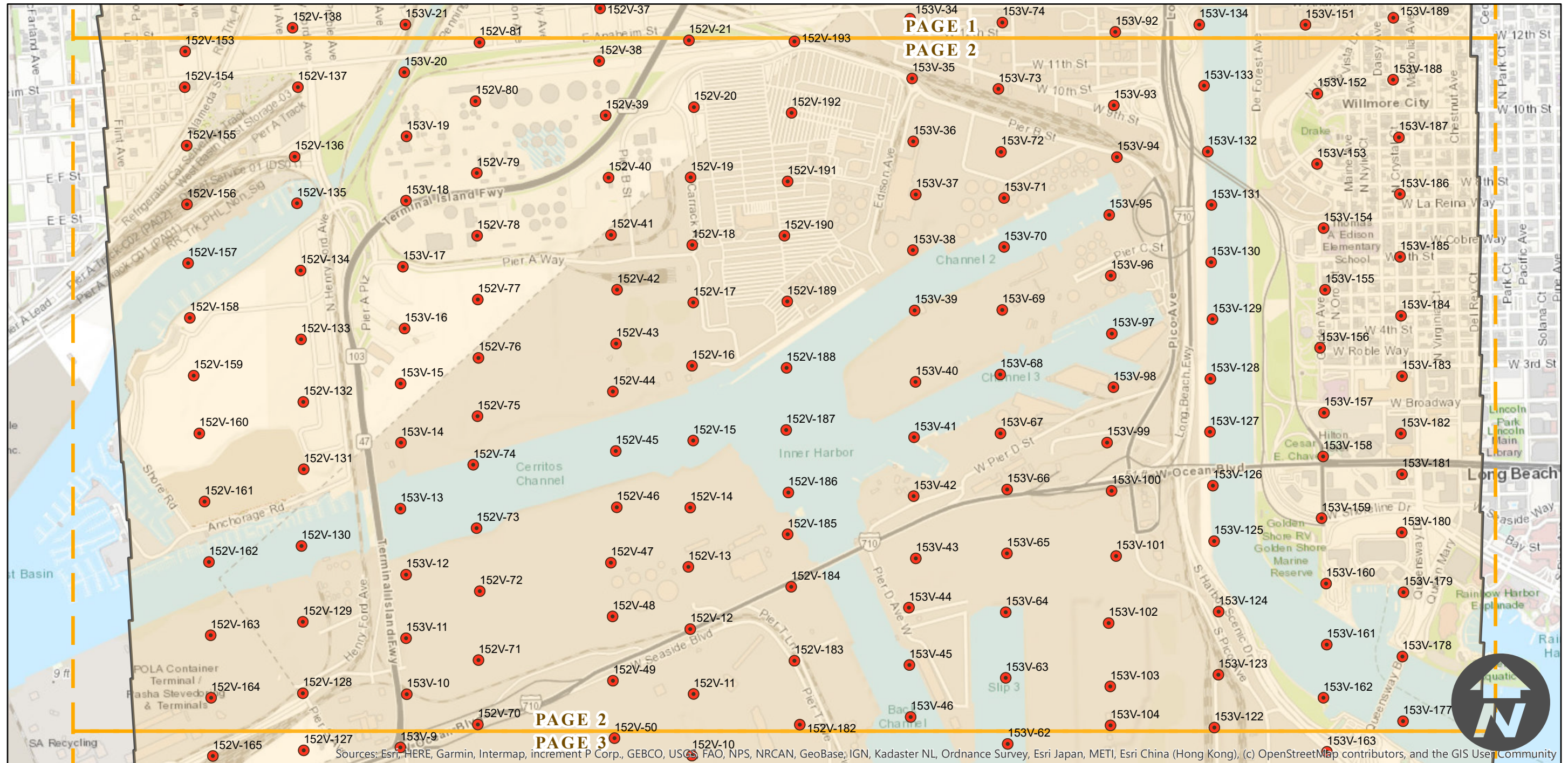
Counties: Los Angeles  
Flight date(s): 01-30-1962  
Scale: 1:2,400  
Overlap: 60%

Note: Long Beach, Long Beach Harbor area. Frames filed under PAI-roll numbers as shown on index. PAI-LBH-62 replaces records for PAI-152V and PAI-153V.

## FLIGHT LOCATION



Complete Metadata:  
<https://www.library.ucsb.edu/src/airphotos/aerial-photography-information>



0 0.25 0.5 1 Miles

Index to Aerial Photography  
Page 2 of 3

Scale of this index: 1:15,000

# PAI-LBH-62

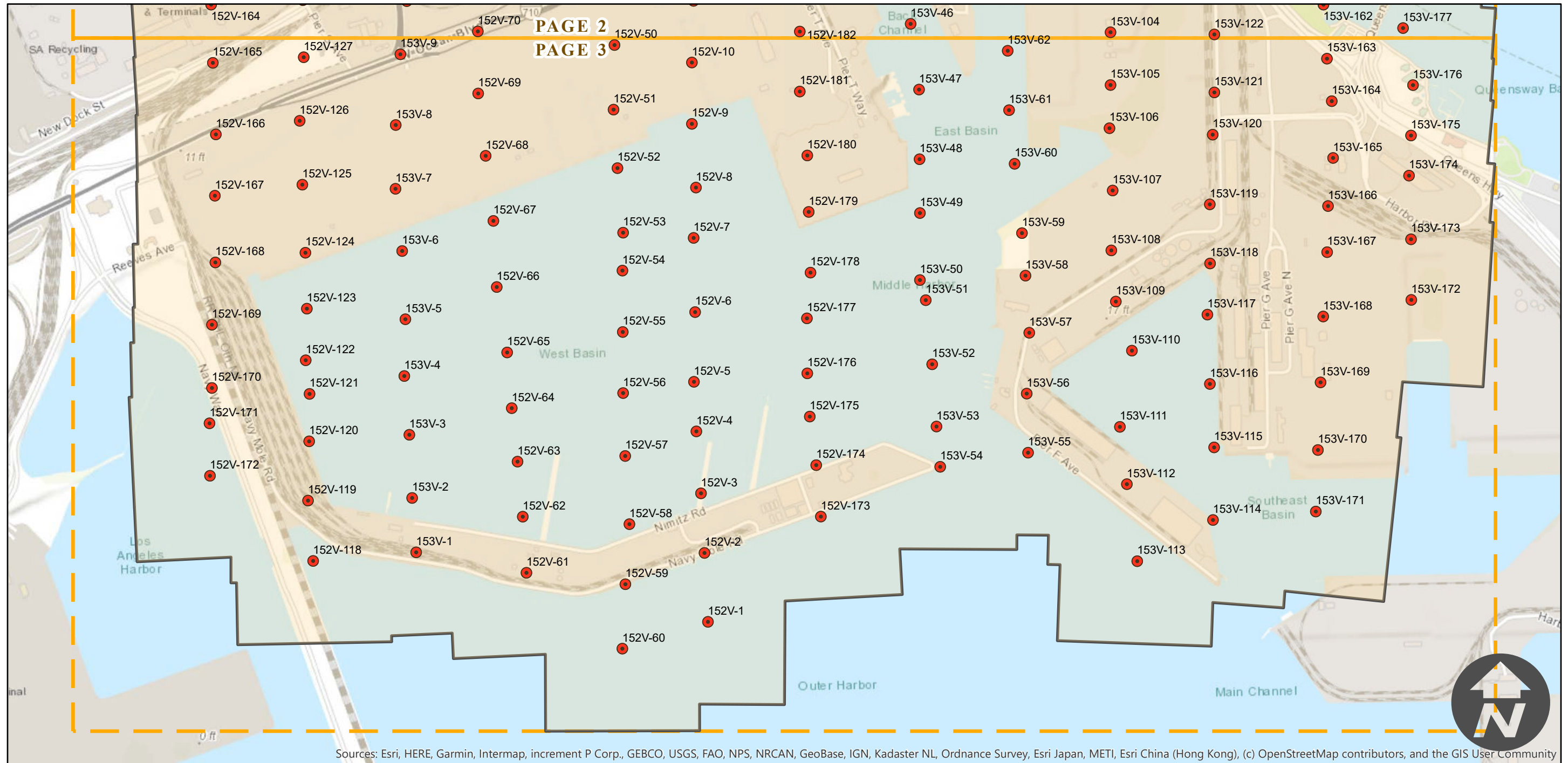
Counties: Los Angeles  
Flight date(s): 01-30-1962  
Scale: 1:2,400  
Overlap: 60%

Note: Long Beach, Long Beach Harbor area. Frames filed under PAI-roll numbers as shown on index. PAI-LBH-62 replaces records for PAI-152V and PAI-153V.

## FLIGHT LOCATION



Complete Metadata:  
<https://www.library.ucsb.edu/src/airphotos/aerial-photography-information>



0 0.25 0.5 1 Miles

Index to Aerial Photography  
Page 3 of 3

Scale of this index: 1:15,000