

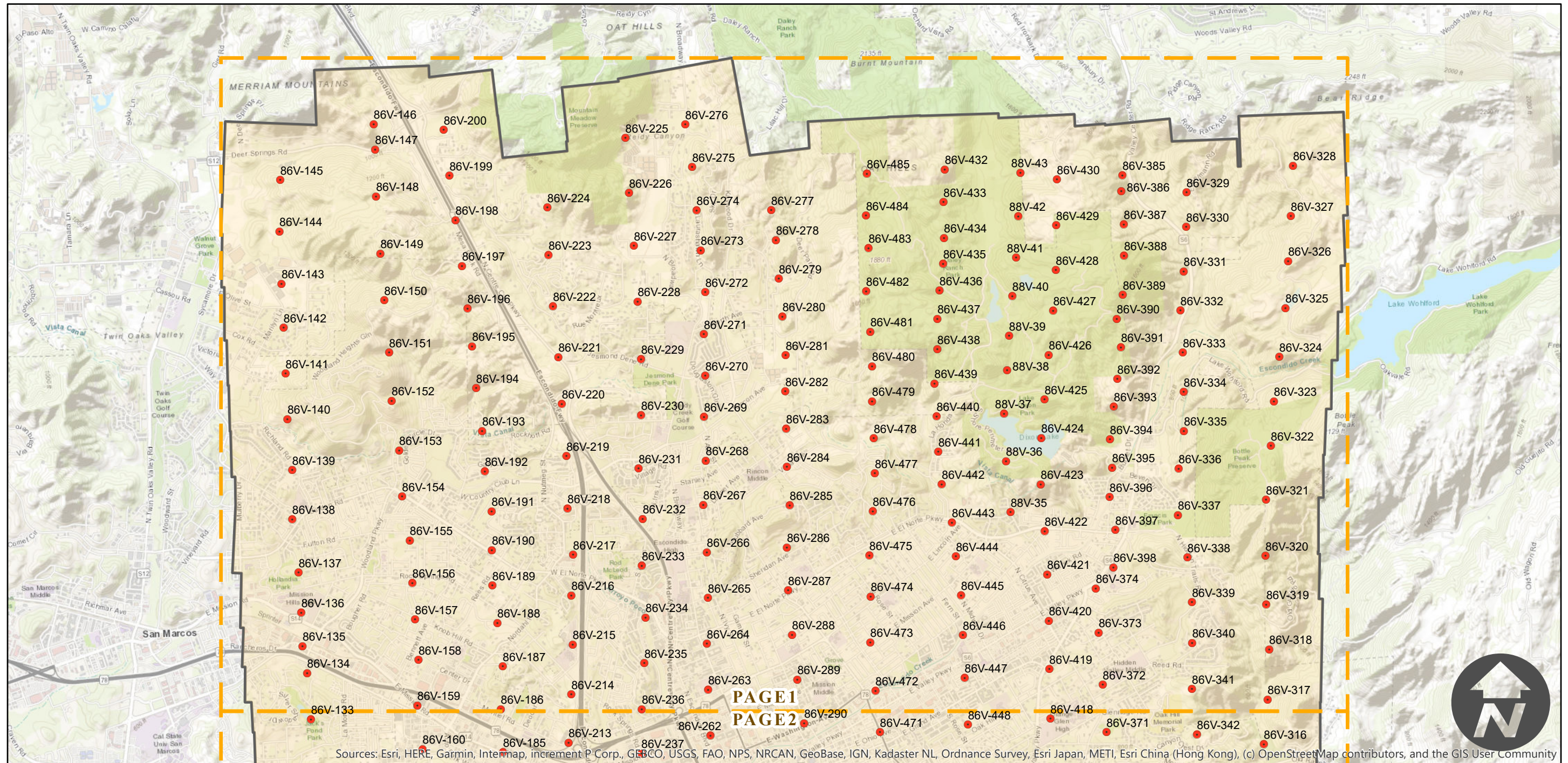
PAI-ESCON-57

Counties: San Diego
Flight date(s): 05-16-1957 to 06-22-1957
Scale: 1:6,000
Overlap: 60%

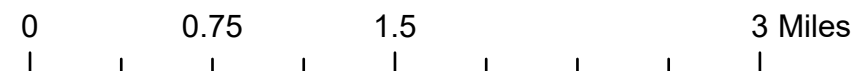
Note: Imagery coverage of Escondido, California. Multiple PAI-roll numbers re-catalogued as PAI-ESCON-57. Imagery filed by PAI-roll numbers as shown on index. PAI-88V frames on index only held as paper prints; negatives with these numbers cover a different area. Index is missing 86V frames 201, 296-304, 355-358, 375-384, 399-400, and 431.

Complete Metadata:
<https://www.library.ucsb.edu/src/airphotos/aerial-photography-information>

FLIGHT LOCATION



Sources: Esri, HERE, Garmin, Intermap, increment P Corp., GEBCO, USGS, FAO, NPS, NRCAN, GeoBase, IGN, Kadaster NL, Ordnance Survey, Esri Japan, METI, Esri China (Hong Kong), (c) OpenStreetMap contributors, and the GIS User Community



PAI-ESCON-57

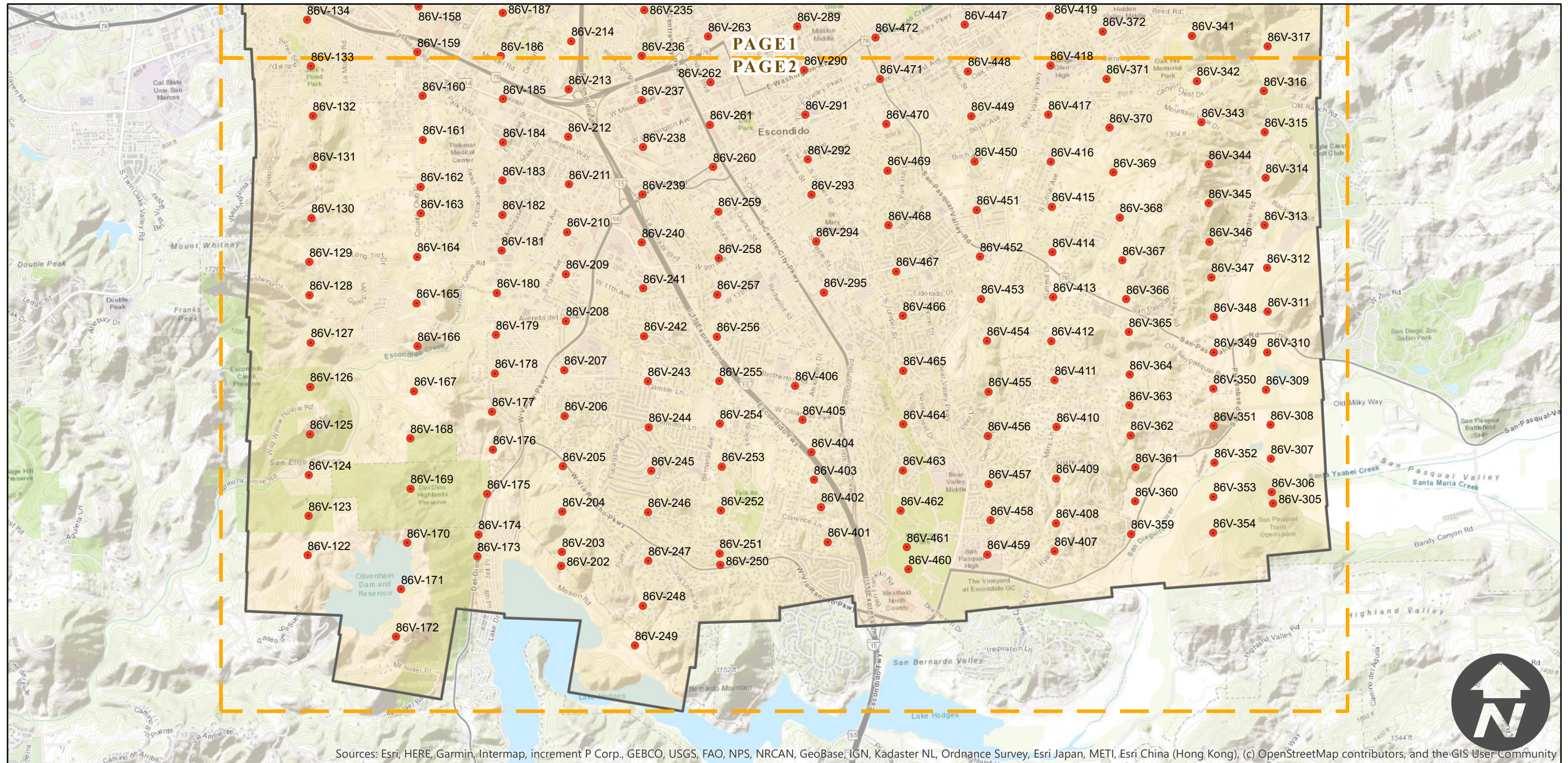
Counties: San Diego
Flight date(s): 05-16-1957 to 06-22-1957
Scale: 1:6,000
Overlap: 60%

Note: Imagery coverage of Escondido, California. Multiple PAI-roll numbers re-catalogued as PAI-ESCON-57. Imagery filed by PAI-roll numbers as shown on index. PAI-88V frames on index only held as paper prints; negatives with these numbers cover a different area. Index is missing 86V frames 201, 296-304, 355-358, 375-384, 399-400, and 431.

FLIGHT LOCATION



Complete Metadata:
<https://www.library.ucsb.edu/src/airphotos/aerial-photography-information>



Sources: Esri, HERE, Garmin, Intermap, increment P Corp., GEBCO, USGS, FAO, NRCAN, GeoBase, IGN, Kadaster NL, Ordnance Survey, Esri Japan, METI, Esri China (Hong Kong), (c) OpenStreetMap contributors, and the GIS User Community

0 0.75 1.5 3 Miles

Index to Aerial Photography
Page 2 of 2

Scale of this index: 1:50,000