

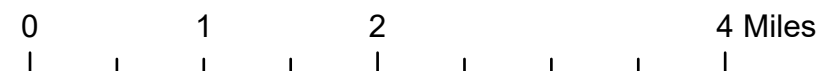
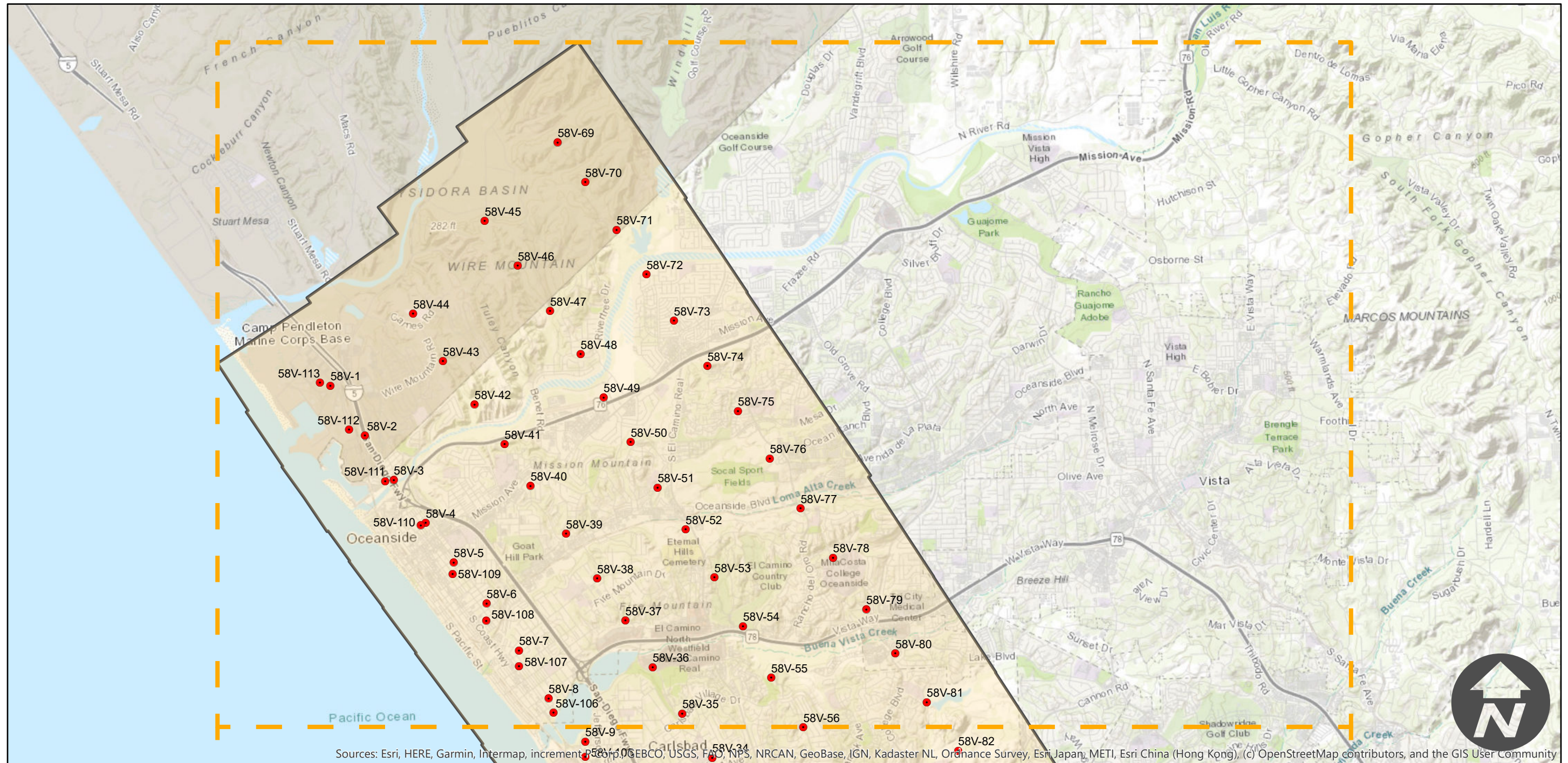
PAI-C-and-O-56 (12K)

Counties: San Diego
 Flight date(s): 02-17-1956
 Scale: 1:12,000
 Overlap: 60%

Note: Imagery of the Carlsbad and Oceanside areas of San Diego County. Coverage reaches northward through Fallbrook Junction and southward to Encinitas. Multiple PAI-roll numbers re-catalogued as PAI-C-and-O-56. Imagery filed under roll numbers as shown on index sheets.



Complete Metadata:
<https://www.library.ucsb.edu/src/airphotos/aerial-photography-information>



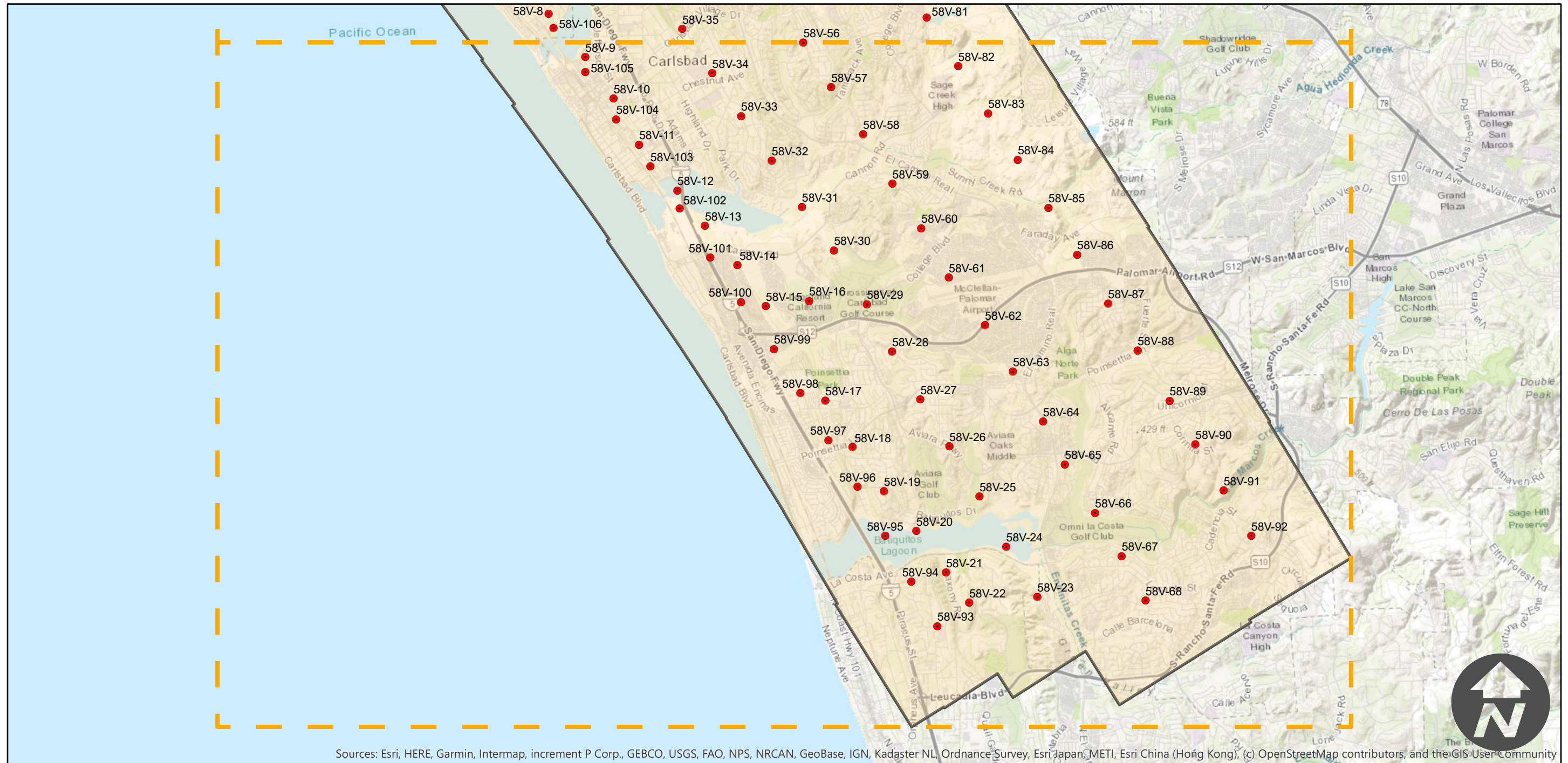
PAI-C-and-O-56 (12K)

Counties: San Diego
Flight date(s): 02-17-1956
Scale: 1:12,000
Overlap: 60%

Note: Imagery of the Carlsbad and Oceanside areas of San Diego County. Coverage reaches northward through Fallbrook Junction and southward to Encinitas. Multiple PAI-roll numbers re-catalogued as PAI-C-and-O-56. Imagery filed under roll numbers as shown on index sheets.



Complete Metadata:
<https://www.library.ucsb.edu/src/airphotos/aerial-photography-information>



Sources: Esri, HERE, Garmin, Intermap, increment P Corp., GEBCO, USGS, FAO, NPS, NRCAN, GeoBase, IGN, Kadaster NL, Ordnance Survey, Esri Japan, METI, Esri China (Hong Kong), (c) OpenStreetMap contributors, and the GIS User Community

