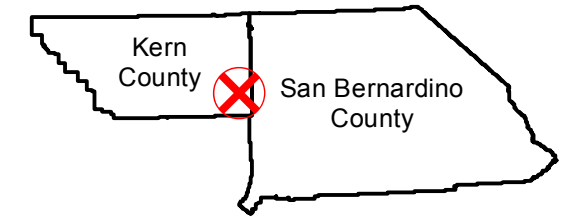


PAI-BORON-62

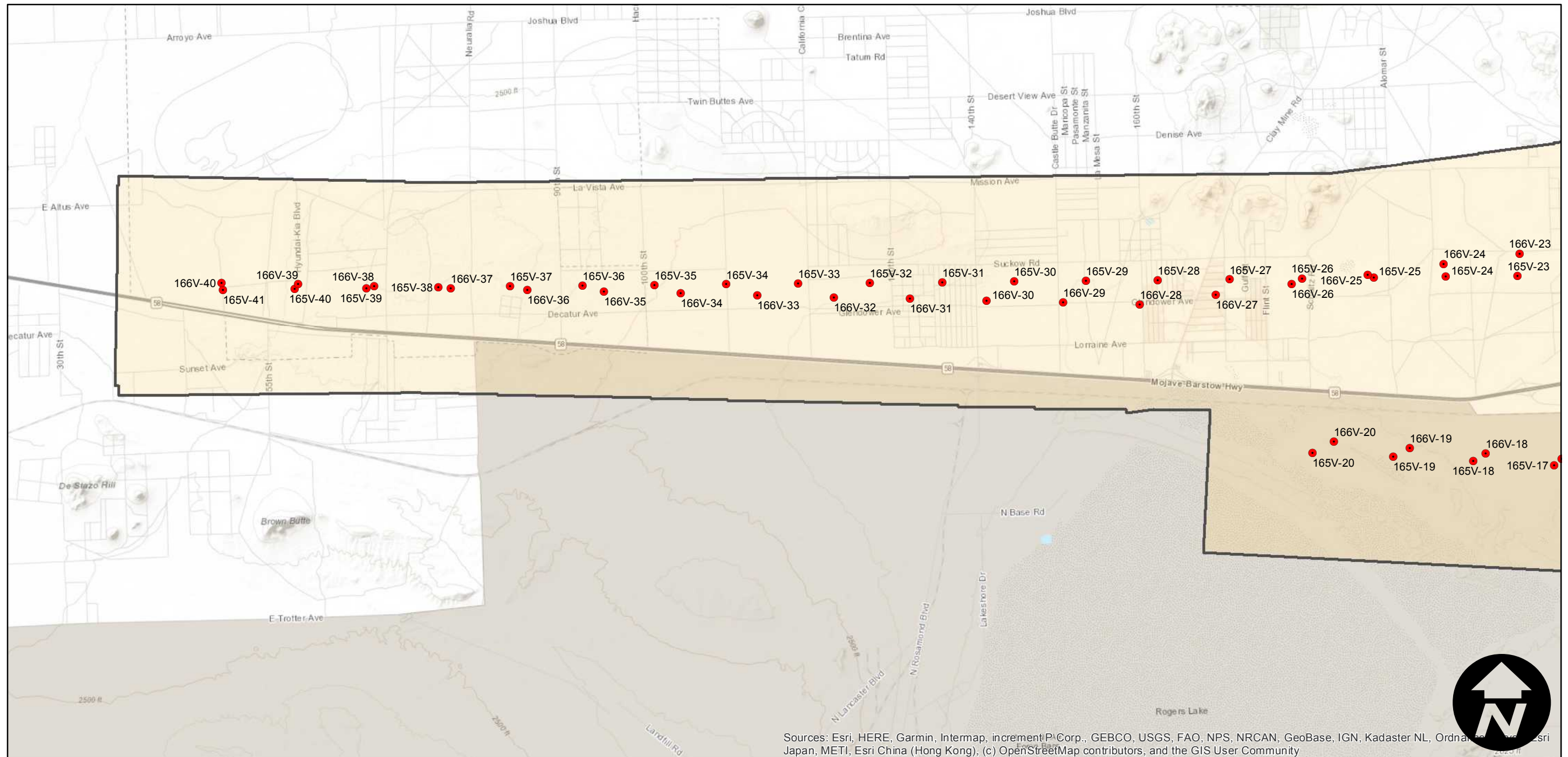
Counties: Kern, San Bernardino
Flight date(s): 07-11-1962 to 07-13-1962
Scale: 1:18,000
Overlap: 60%

Note: Kramer Junction, Boron, North Edwards: Highway 58 East of Mojave. Imagery filed by PAI-roll numbers as shown on index. Frame numbers 165V-3 through 165V-41, and 166V-3 through 166V-40.

FLIGHT LOCATION



Complete Metadata:
<https://www.library.ucsb.edu/src/airphotos/aerial-photography-information>



Sources: Esri, HERE, Garmin, Intermap, incrementP Corp., GEBCO, USGS, FAO, NPS, NRCAN, GeoBase, IGN, Kadaster NL, Ordnance Survey, Esri Japan, METI, Esri China (Hong Kong), (c) OpenStreetMap contributors, and the GIS User Community

0 1 2 4 Miles

Index to Aerial Photography
Page 1 of 2

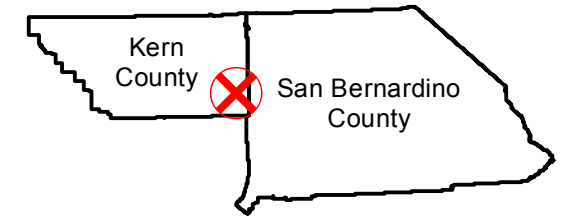
Scale of this index: 1:80,000

PAI-BORON-62

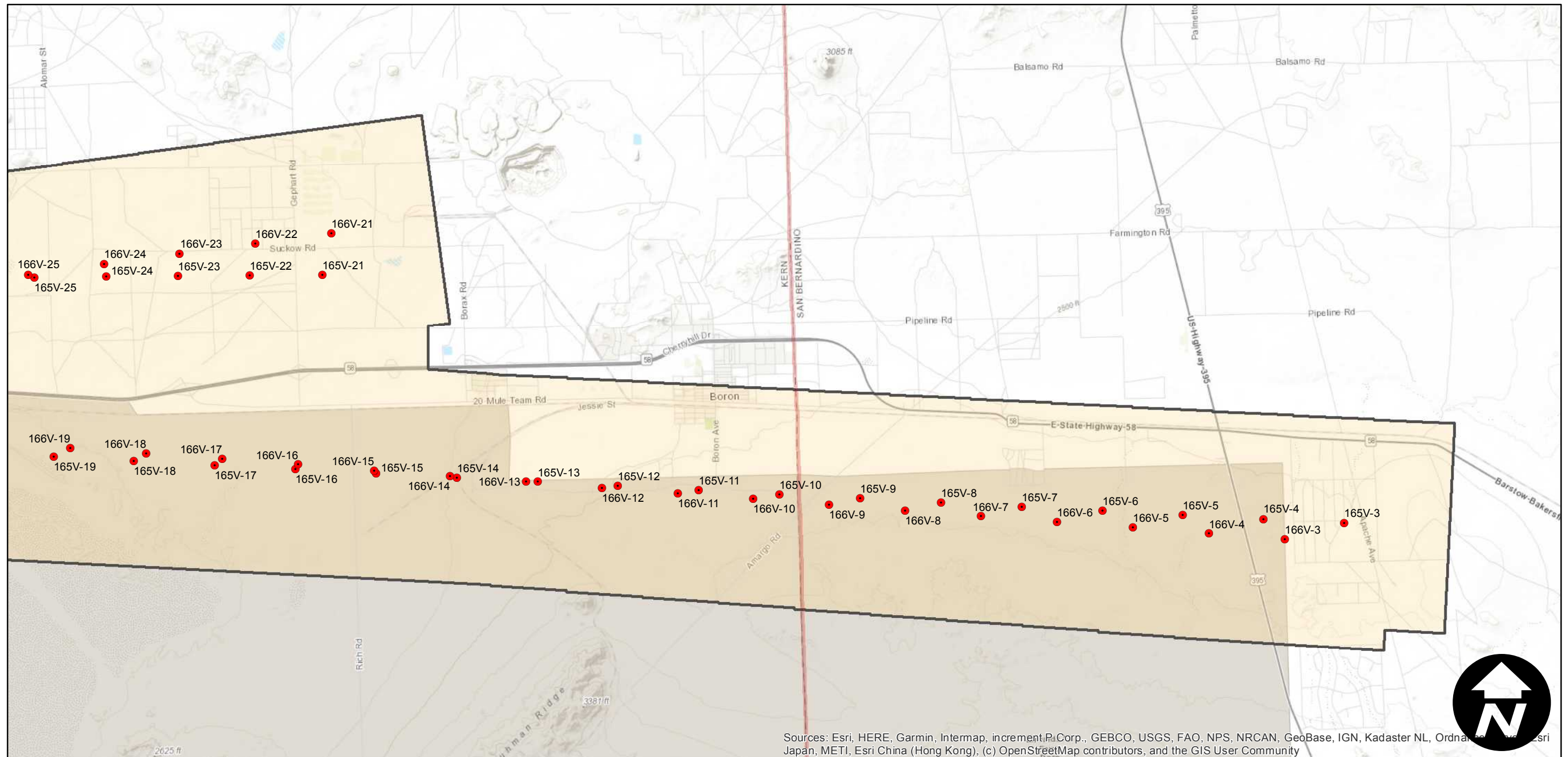
Counties: Kern, San Bernardino
Flight date(s): 07-11-1962 to 07-13-1962
Scale: 1:18,000
Overlap: 60%

Note: Kramer Junction, Boron, North Edwards: Highway 58 East of Mojave. Imagery filed by PAI-roll numbers as shown on index. Frame numbers 165V-3 through 165V-41, and 166V-3 through 166V-40.

FLIGHT LOCATION



Complete Metadata:
<https://www.library.ucsb.edu/src/airphotos/aerial-photography-information>



Sources: Esri, HERE, Garmin, Intermap, increment P Corp., GEBCO, USGS, FAO, NPS, NRCAN, GeoBase, IGN, Kadaster NL, Ordnance Survey, Esri Japan, METI, Esri China (Hong Kong), (c) OpenStreetMap contributors, and the GIS User Community

