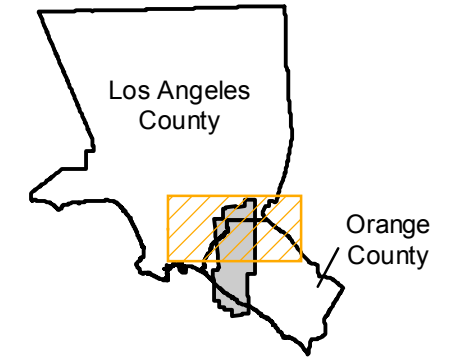


PAI-AXK

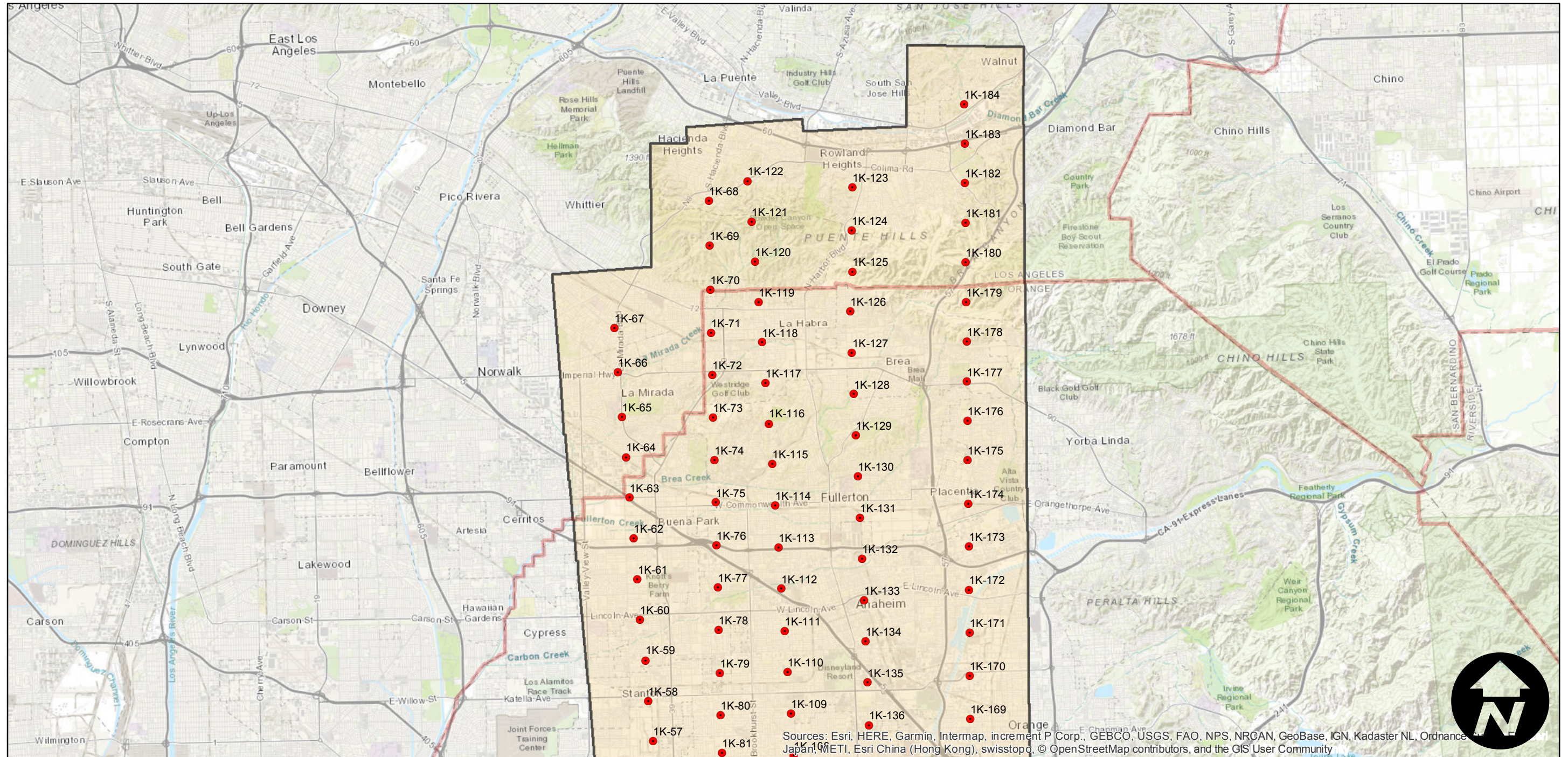
Counties: Orange, Los Angeles
Flight date(s): 11-18-1952
Scale: 1:20,000
Overlap: 60%

Note: Coverage of Anaheim, Buena Park, Fountain Valley, Fullerton, Garden Grove, Huntington Beach, Newport Beach, Westminster, and vicinity. Imagery rejected by USDA for AXK-1953 which covers the entire county.

FLIGHT LOCATION



Complete Metadata:
<https://www.library.ucsb.edu/src/airphotos/aerial-photography-information>



Sources: Esri, HERE, Garmin, Intermap, increment P Corp., GEBCO, USGS, FAO, NPS, NRCAN, GeoBase, IGN, Kadaster NL, Ordnance Survey, Esri Japan, METI, Esri China (Hong Kong), swisstopo, © OpenStreetMap contributors, and the GIS User Community

0 3 6 12 Miles

Index to Aerial Photography
Page 1 of 2

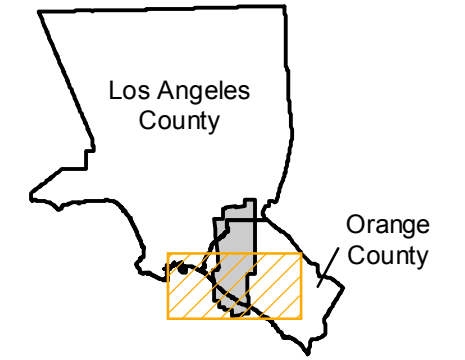
Scale of this index: 1:160,000

PAI-AXK

Counties: Orange, Los Angeles
Flight date(s): 11-18-1952
Scale: 1:20,000
Overlap: 60%

Note: Coverage of Anaheim, Buena Park, Fountain Valley, Fullerton, Garden Grove, Huntington Beach, Newport Beach, Westminster, and vicinity. Imagery rejected by USDA for AXK-1953 which covers the entire county.

FLIGHT LOCATION



Complete Metadata:
<https://www.library.ucsb.edu/src/airphotos/aerial-photography-information>

