

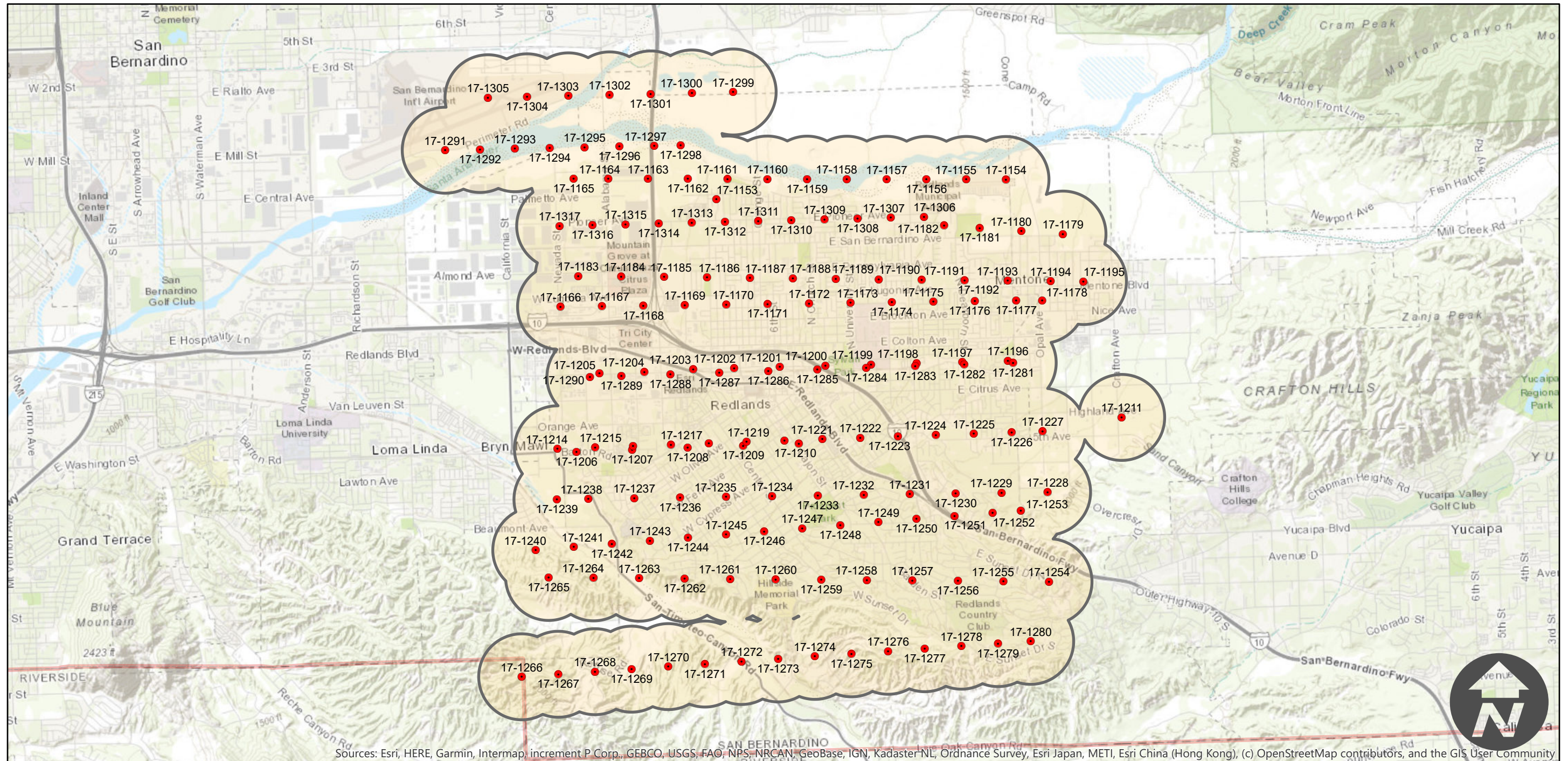
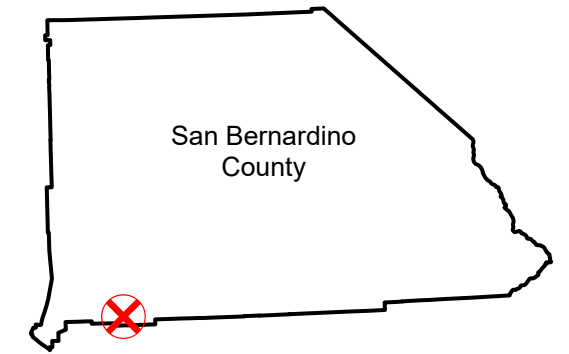
PAI-8

Counties: San Bernardino
Flight date(s): 11-13-1948
Scale: 1:6,000
Overlap: 60%

Note: Imagery centered over the City Redlands, Ca.
Coverage includes the site of the now decommissioned Norton Airforce Base, the 210 and 10 highway intersection prior to construction, and portions of the Santa Ana River.
Frames 17-1212 and 17-1213 are excluded.

Complete Metadata:
<https://www.library.ucsb.edu/src/airphotos/aerial-photography-information>

FLIGHT LOCATION



Sources: Esri, HERE, Garmin, Intermap, increment P Corp., GEBCO, USGS, FAO, NPS, NRCAN, GeoBase, IGN, Kadaster NL, Ordnance Survey, Esri Japan, METI, Esri China (Hong Kong), (c) OpenStreetMap contributors, and the GIS User Community

