

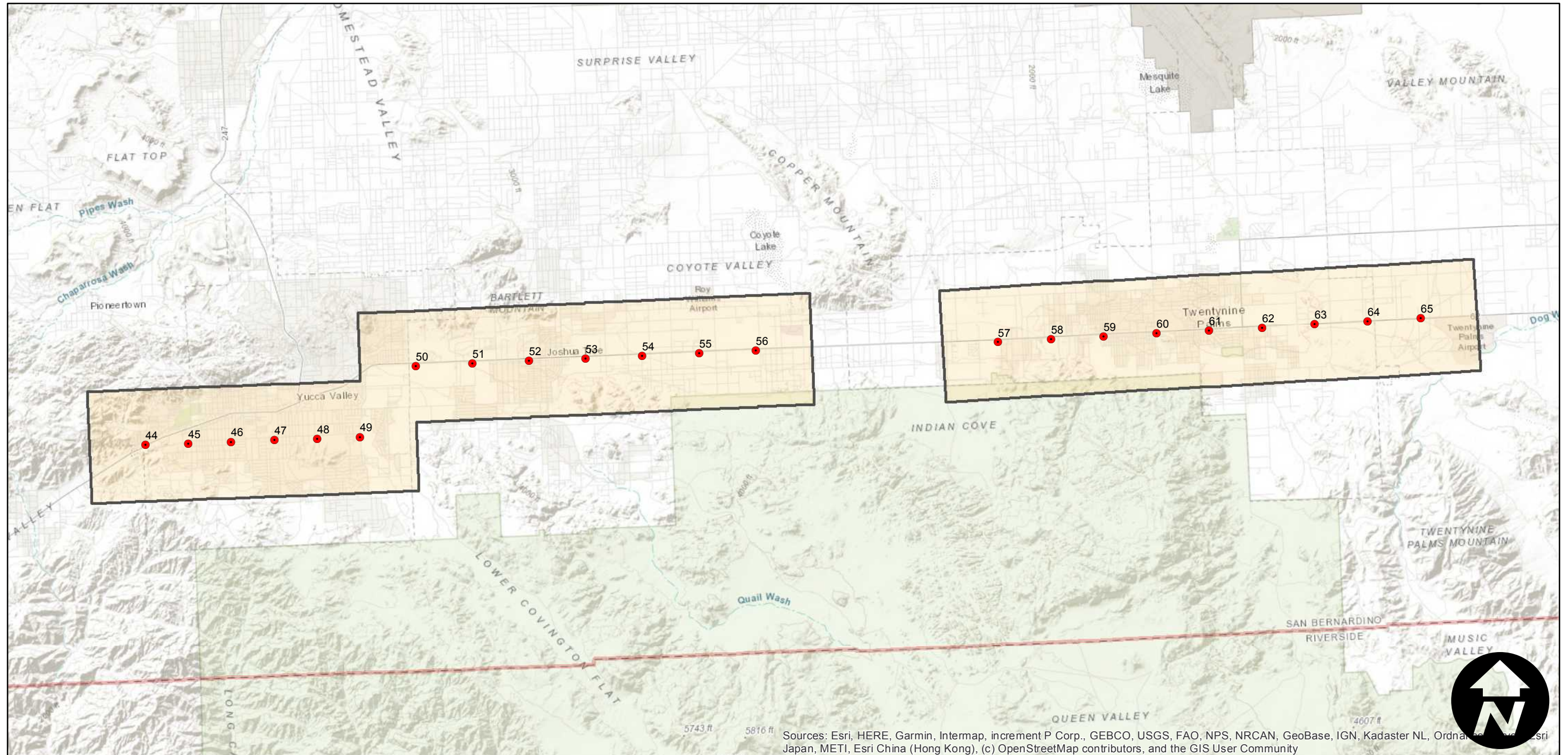
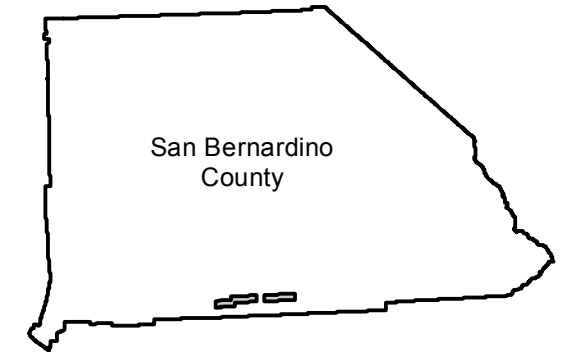
PAI-195V-5

Counties: San Bernardino
Flight date(s): 01-15-1963
Scale: 1:18,000
Overlap: 60%

Note: Yucca Valley, Joshua Tree, and Twentynine Palms.
Frame numbers 195V-44 through 195V-65.

Complete Metadata:
<https://www.library.ucsb.edu/src/airphotos/aerial-photography-information>

FLIGHT LOCATION



0 2 4 8 Miles

Index to Aerial Photography
Page 1 of 1

Scale of this index: 1:150,000

Sources: Esri, HERE, Garmin, Intermap, increment P Corp., GEBCO, USGS, FAO, NPS, NRCAN, GeoBase, IGN, Kadaster NL, Ordnance Survey, Esri Japan, METI, Esri China (Hong Kong), (c) OpenStreetMap contributors, and the GIS User Community