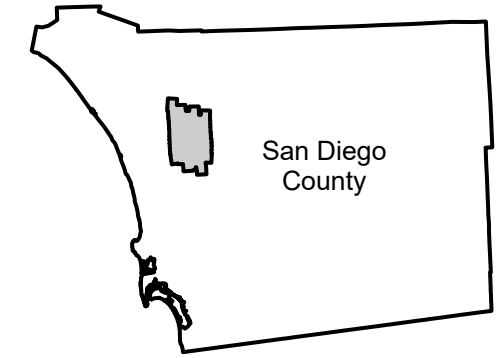


# PAI-138V

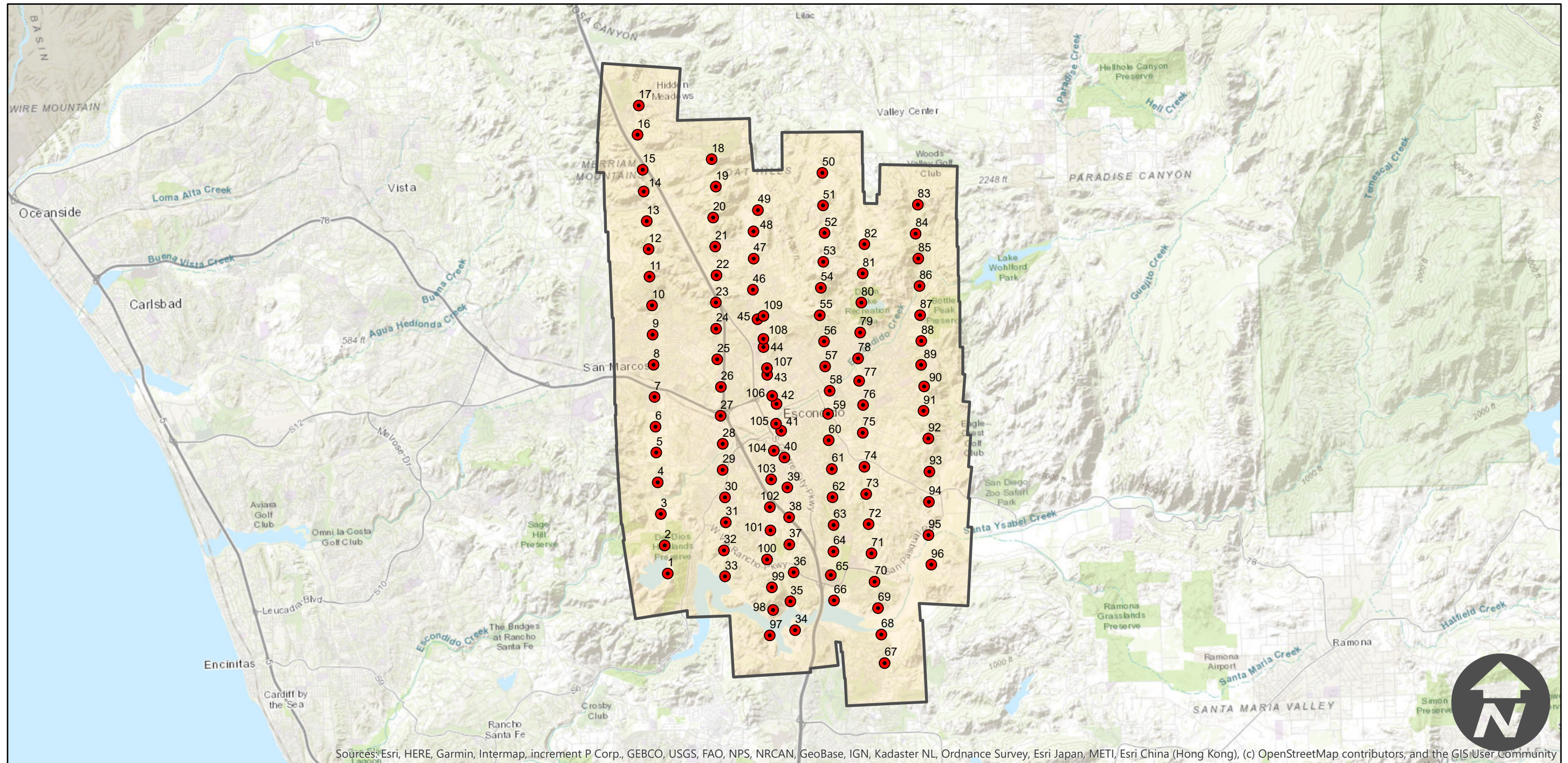
Counties: San Diego  
Flight date: 03-21-1961  
Scale: 1:12,000  
Overlap: 60%

Note: Imagery from Escondido, California and vicinity.  
Photos predate Highways 78 and 15, now a major intersection in Escondido. Imagery also extends south to include coverage of Lake Hodges.

## FLIGHT LOCATION



Complete Metadata:  
<https://www.library.ucsb.edu/src/airphotos/aerial-photography-information>



Sources: Esri, HERE, Garmin, Intermap, increment P Corp., GEBCO, USGS, FAO, NPS, NRCAN, GeoBase, IGN, Kadaster NL, Ordnance Survey, Esri Japan, METI, Esri China (Hong Kong), (c) OpenStreetMap contributors, and the GIS User Community

0 2 4 8 Miles

Index to Aerial Photography  
Page 1 of 1

Scale of this index: 1:150,000