

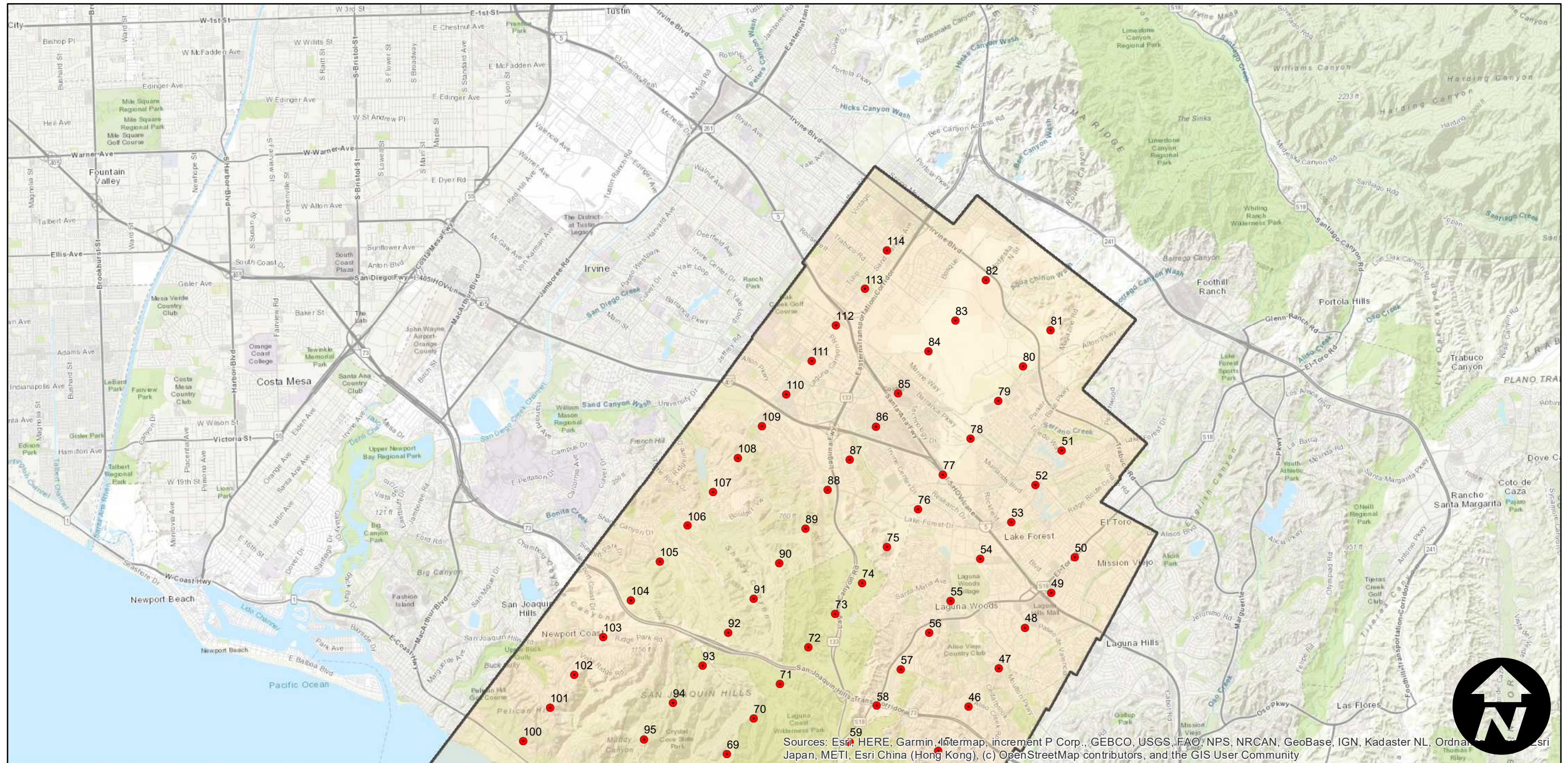
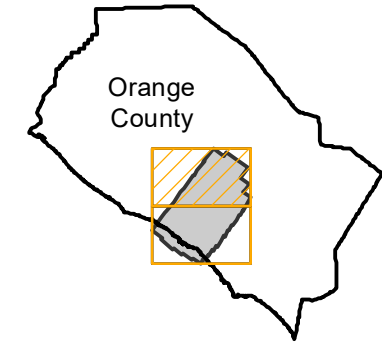
PAI-123V-2

Counties: Orange
Flight date(s): 06-29-1960
Scale: 1:12,000
Overlap: 60%

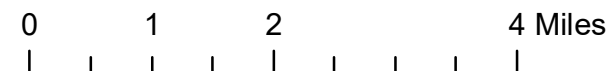
Complete Metadata:
<https://www.library.ucsb.edu/src/airphotos/aerial-photography-information>

Note: Imagery from Irvine to El Toro in the northeast with coverage running southwest to Laguna Beach and the coast.

FLIGHT LOCATION



Sources: Esri, HERE, Garmin, Intermap, increment P Corp., GEBCO, USGS, FAO, NPS, NRCAN, GeoBase, IGN, Kadaster NL, Ordnance Survey, Esri Japan, METI, Esri China (Hong Kong), (c) OpenStreetMap contributors, and the GIS User Community

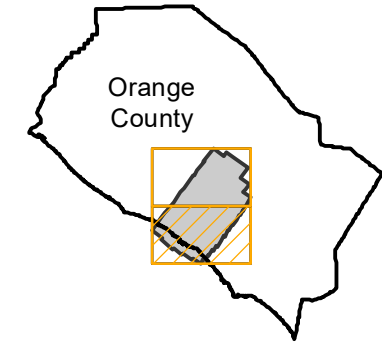


PAI-123V-2

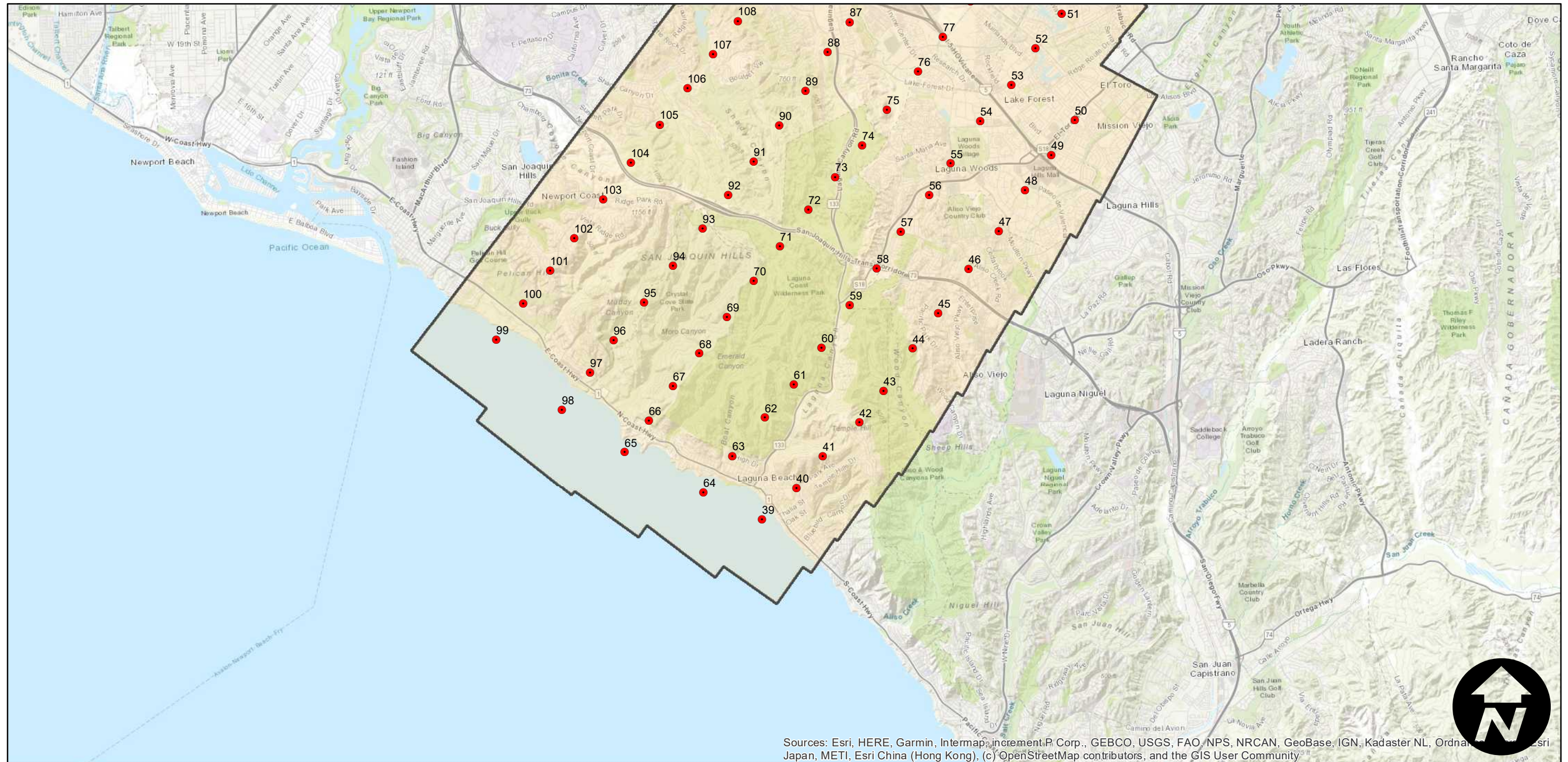
Counties: Orange
Flight date(s): 06-29-1960
Scale: 1:12,000
Overlap: 60%

Note: Imagery from Irvine to El Toro in the northeast with coverage running southwest to Laguna Beach and the coast.

FLIGHT LOCATION



Complete Metadata:
<https://www.library.ucsb.edu/src/airphotos/aerial-photography-information>



Sources: Esri, HERE, Garmin, Intermap, increment P Corp., GEBCO, USGS, FAO, NPS, NRCAN, GeoBase, IGN, Kadaster NL, Ordnance Survey, Esri Japan, METI, Esri China (Hong Kong), (c) OpenStreetMap contributors, and the GIS User Community

0 1 2 4 Miles

Scale of this index: 1:100,000