

IMC-349 (1:3K)

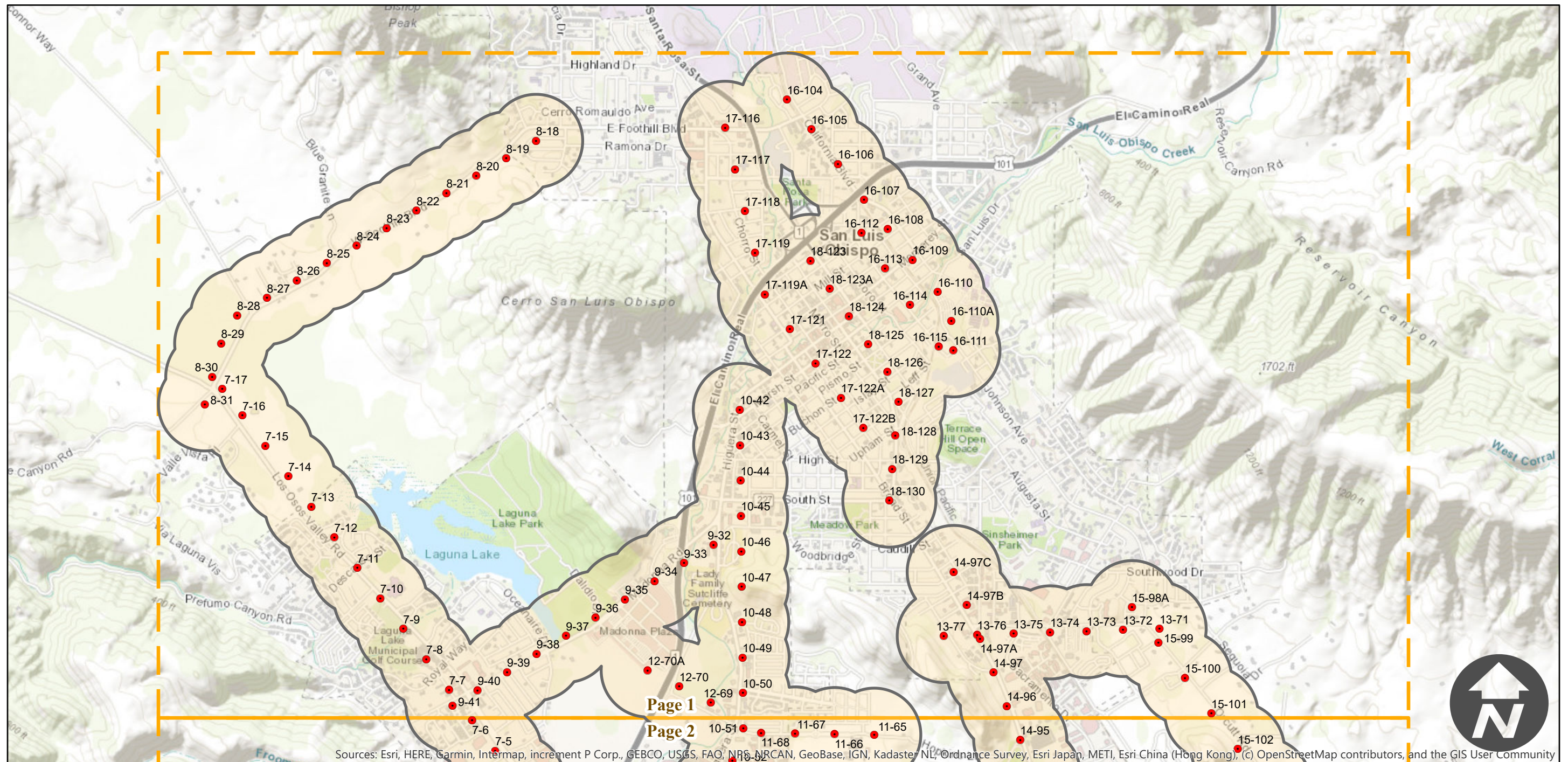
Counties: San Luis Obispo
Flight date(s): 07-20-1963 to 07-24-1963
Scale: 1:3,000
Overlap: 60%

Note: Multi-scale imagery covering the City of San Luis Obispo and vicinity. Imagery taken at the 12K scale is fairly homogenous, while the imagery taken at the 3K scale follows the main thoroughfares of the San Luis Obispo area.

FLIGHT LOCATION



Complete Metadata:
<https://www.library.ucsb.edu/src/airphotos/aerial-photography-information>



Sources: Esri, HERE, Garmin, Intermap, increment P Corp., GEBCO, USGS, FAO, NRS, NRCAN, GeoBase, IGN, Kadaster NL, Ordnance Survey, Esri Japan, METI, Esri China (Hong Kong), (c) OpenStreetMap contributors, and the GIS User Community

0 0.5 1 2 Miles

Index to Aerial Photography
Page 1 of 2

Scale of this index: 1:30,000

IMC-349 (1:3K)

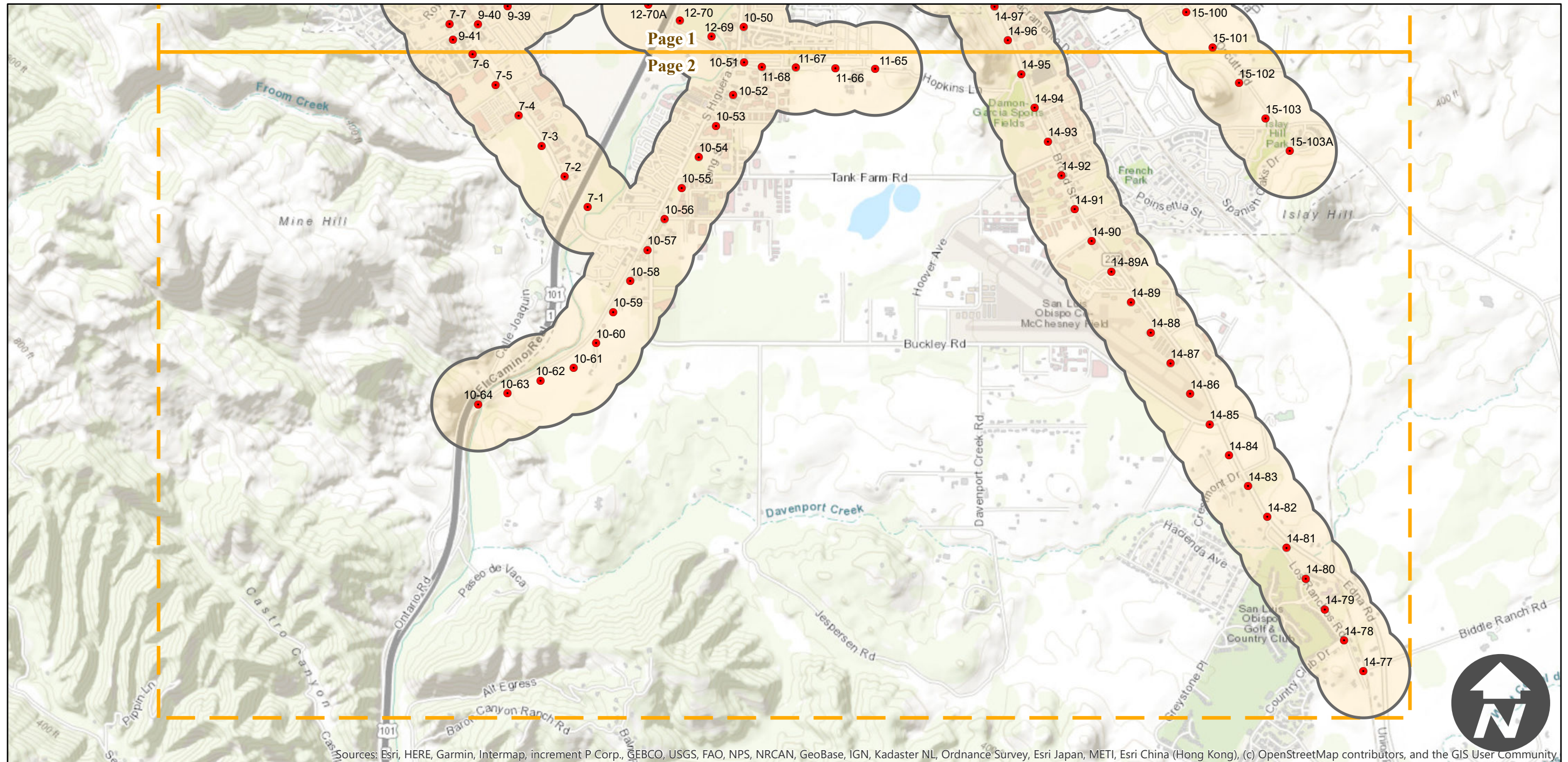
Counties: San Luis Obispo
Flight date(s): 07-20-1963 to 07-24-1963
Scale: 1:3,000
Overlap: 60%

Note: Multi-scale imagery covering the City of San Luis Obispo and vicinity. Imagery taken at the 12K scale is fairly homogenous, while the imagery taken at the 3K scale follows the main thoroughfares of the San Luis Obispo area.

FLIGHT LOCATION



Complete Metadata:
<https://www.library.ucsb.edu/src/airphotos/aerial-photography-information>



0 0.5 1 2 Miles

Index to Aerial Photography
Page 2 of 2

Scale of this index: 1:30,000