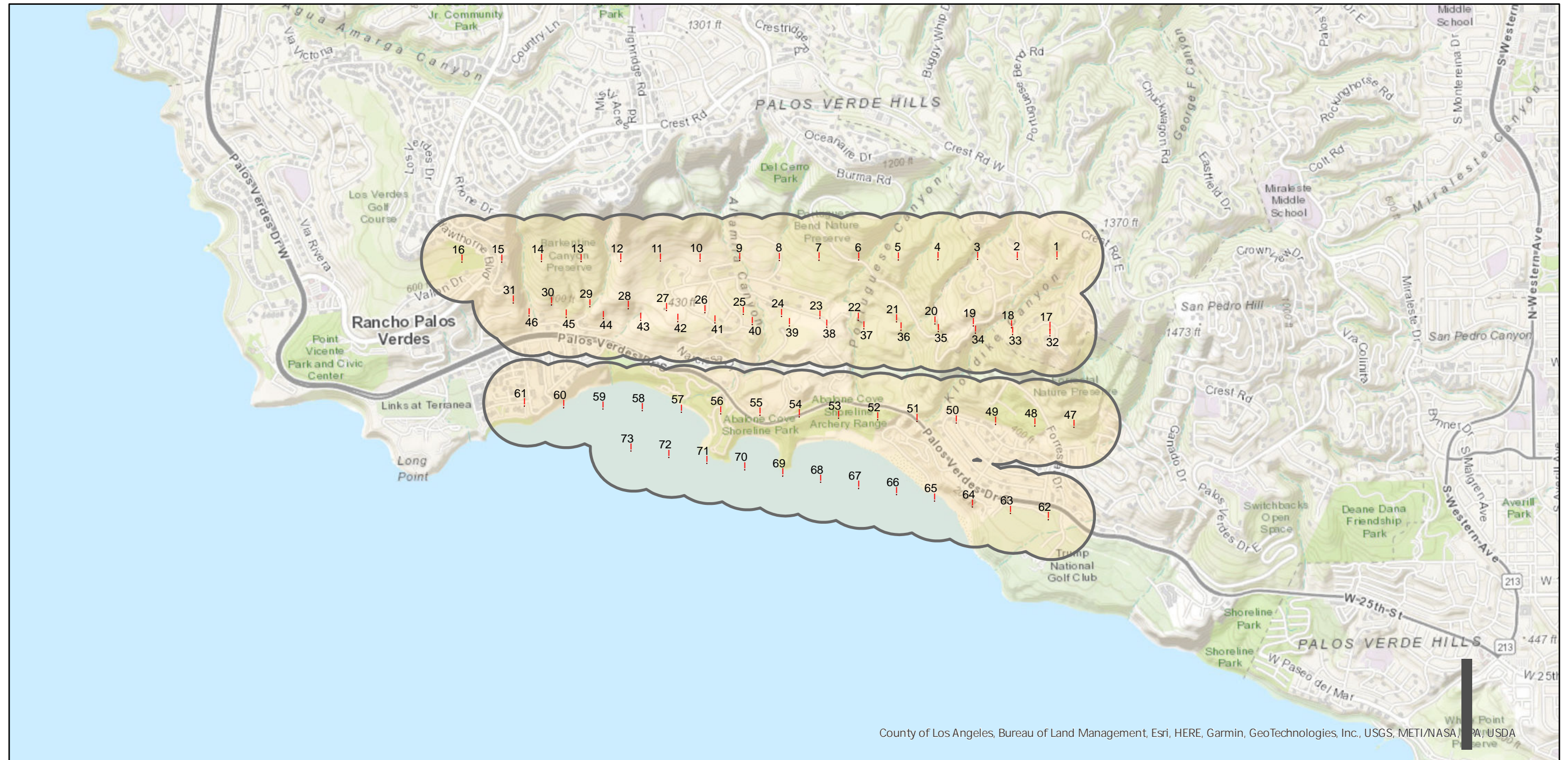


IMC-2236

Counties: Los Angeles
Flight date(s): 12-23-1956
Scale: 1:4,800
Overlap: 60%

Note: Palos Verdes Peninsula: Portuguese Bend and vicinity. Negatives filed on roll IMC-2210. Imagery acquired 1986.

FLIGHT LOCATION



County of Los Angeles, Bureau of Land Management, Esri, HERE, Garmin, GeoTechnologies, Inc., USGS, METI/NASA, PA, USDA

0 0.5 1 2 Miles

Index to Aerial Photography
Page 1 of 1

Scale of this index: 1:30,000