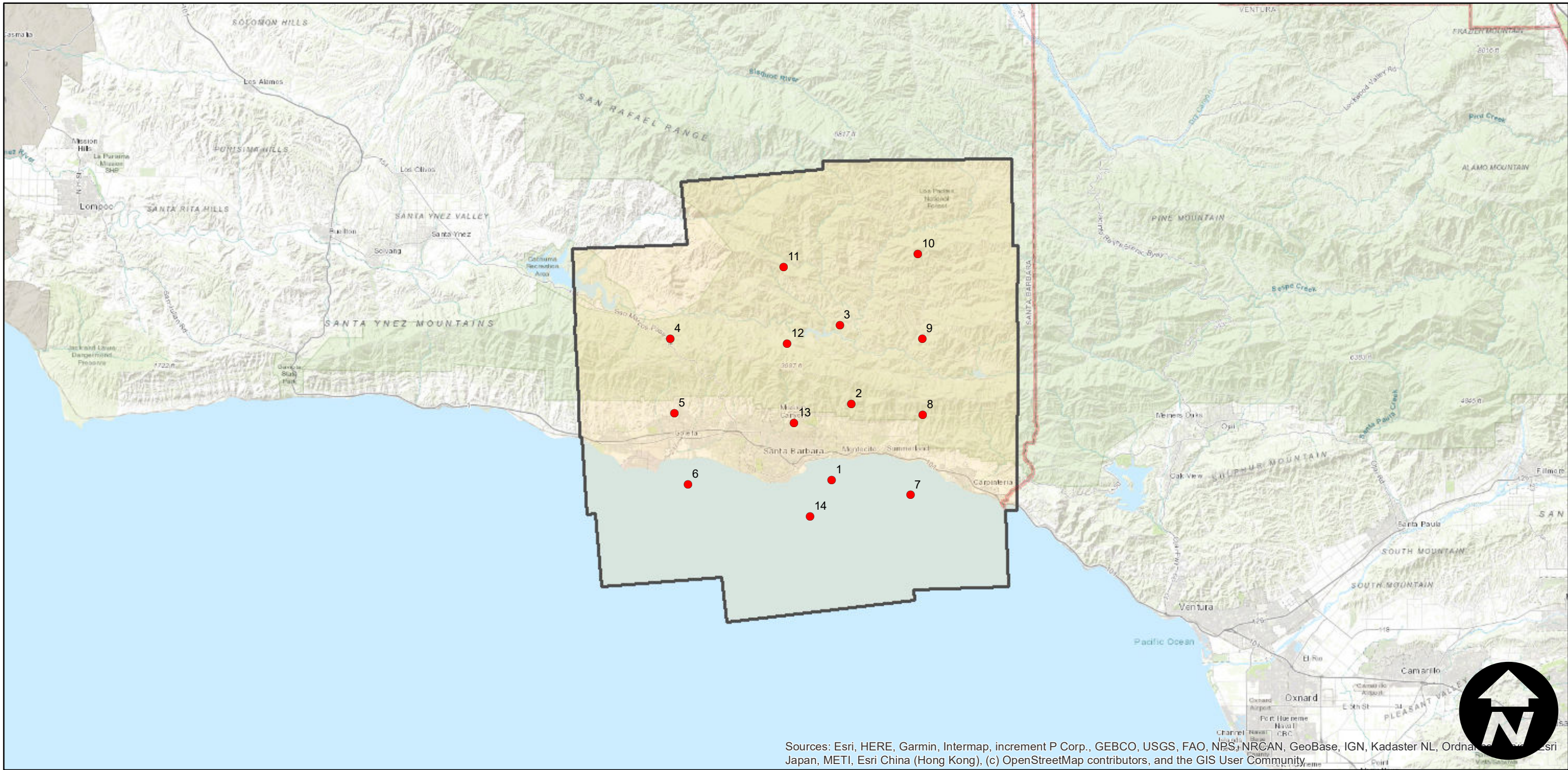


HB-MS

Counties: Santa Barbara
Flight date(s): 08-22-1968
Scale: 1: 80,000
Overlap: 60%

Complete Metadata:
<https://www.library.ucsb.edu/src/airphotos/aerial-photography-information>

Note: Imagery of the Santa Barbara Coast with coverage from Carpinteria following the coast west to Goleta and from offshore northward over the Santa Ynez Mountains and up into the San Rafael Mountain Range.



0 5 10 20 Miles

Index to Aerial Photography
Page 1 of 1

Scale of this index: 1:400,000