

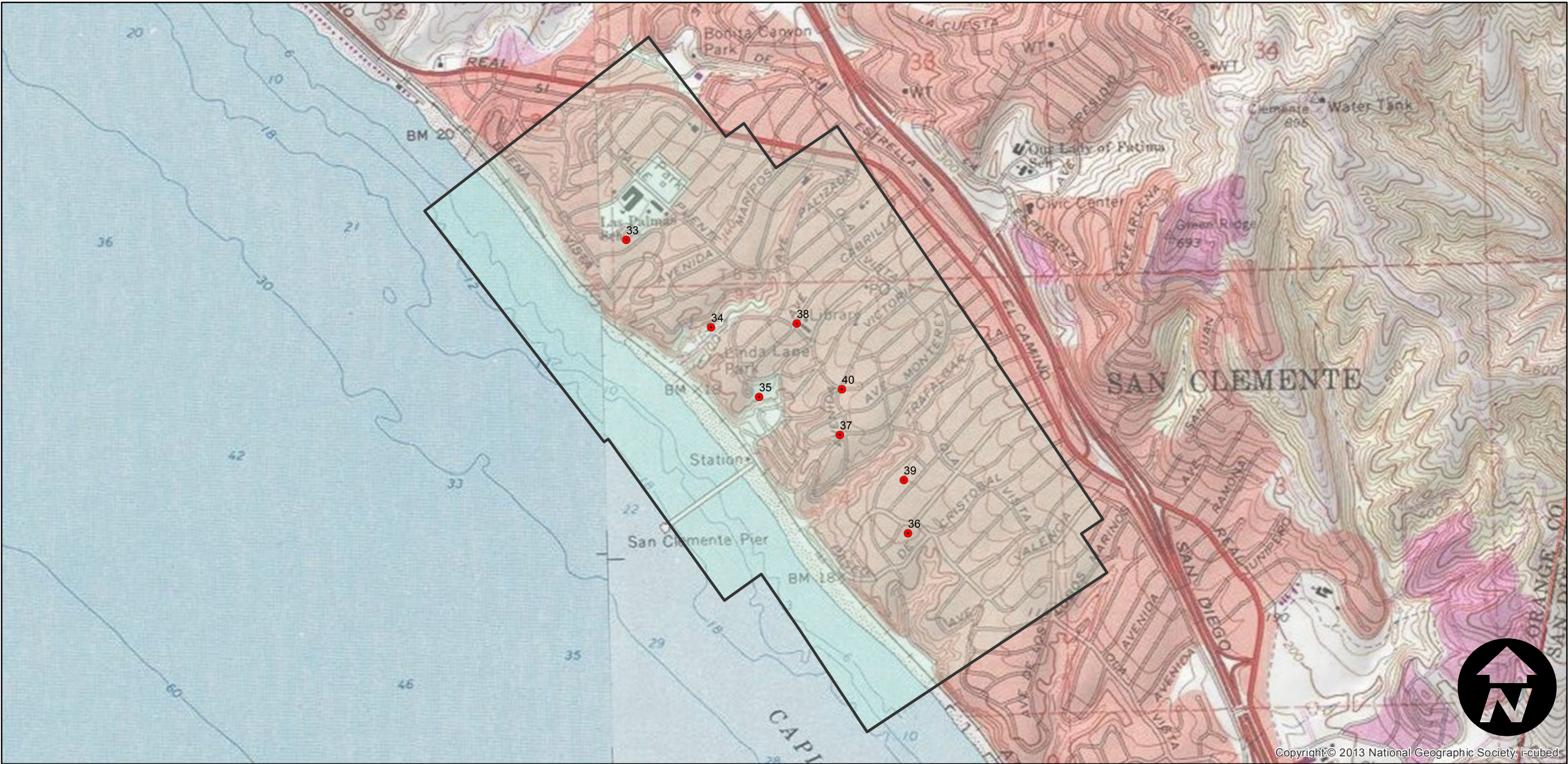
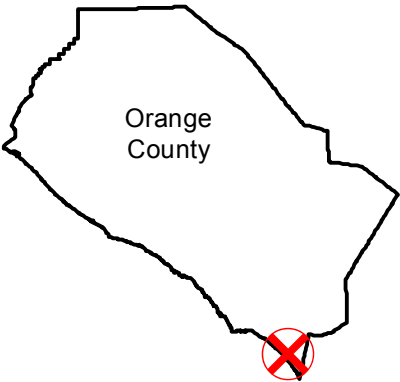
# HB-KY (1:4.5K)

Counties: Orange  
Flight date(s): 12-21-1967  
Scale: 1:4,500  
Overlap: 60%

Complete Metadata:  
<http://www.library.ucsb.edu/mil/aerial-photography-tools>

Note: San Onofre Beach to Dana Point and San Juan Capistrano (1:12,000; frames 1 through 32). San Clemente (1:4,500; frames 33 through 40).

## FLIGHT LOCATION



0 0.25 0.5 1 Miles