

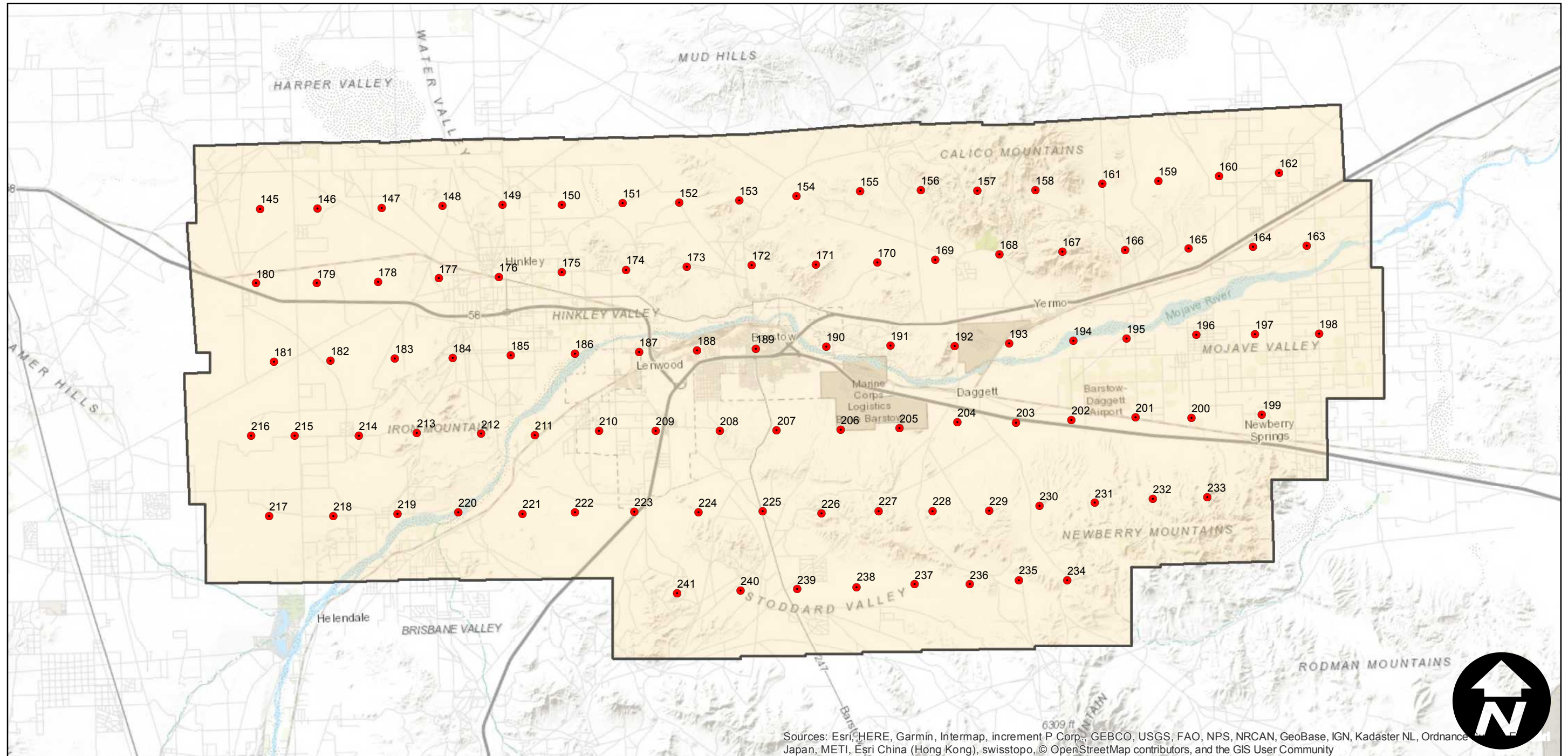
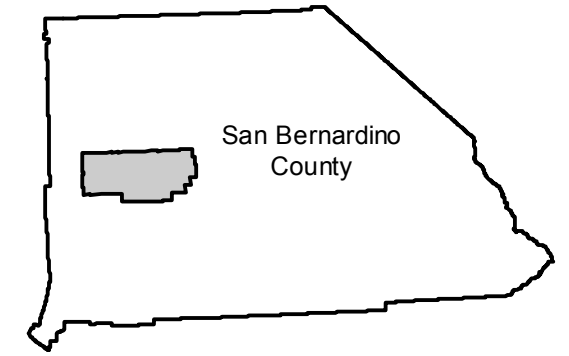
# HA-VE (1:36K)

Counties: San Bernardino  
Flight date(s): 11-18-1963 to 02-21-1964  
Scale: 1:36,000  
Overlap: 60%

Note: Barstow Utilities Program. Barstow, Hinkley, Calico, Daggett, Toomey, Lenwood, Hodge, and vicinity.

Complete Metadata:  
<https://www.library.ucsb.edu/src/airphotos/aerial-photography-information>

## FLIGHT LOCATION



Sources: Esri, HERE, Garmin, Intermap, increment P Corp., GEBCO, USGS, FAO, NPS, NRCAN, GeoBase, IGN, Kadaster NL, Ordnance Survey, Esri Japan, METI, Esri China (Hong Kong), swisstopo, © OpenStreetMap contributors, and the GIS User Community

0 3 6 12 Miles

Index to Aerial Photography  
Page 1 of 1

Scale of this index: 1:250,000