

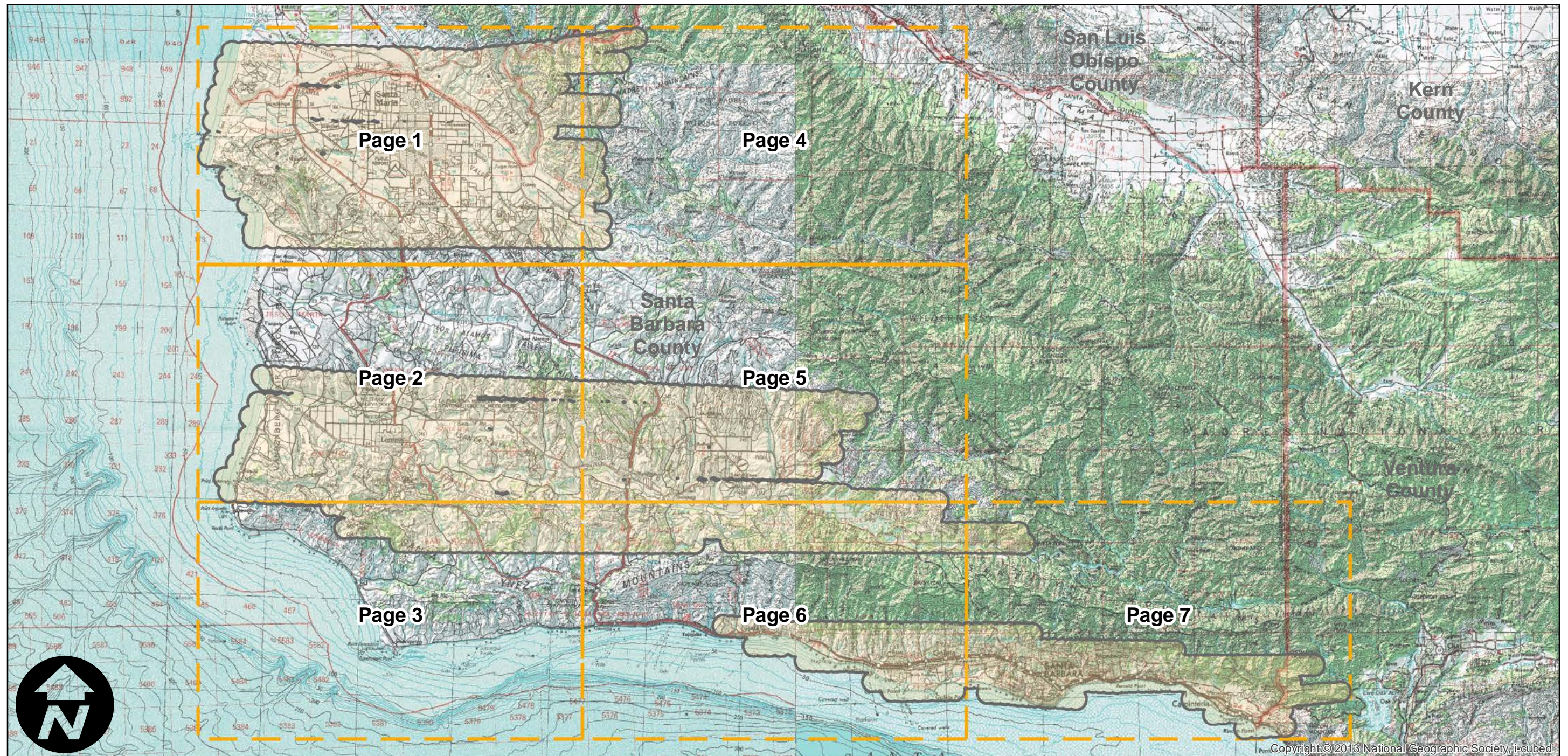
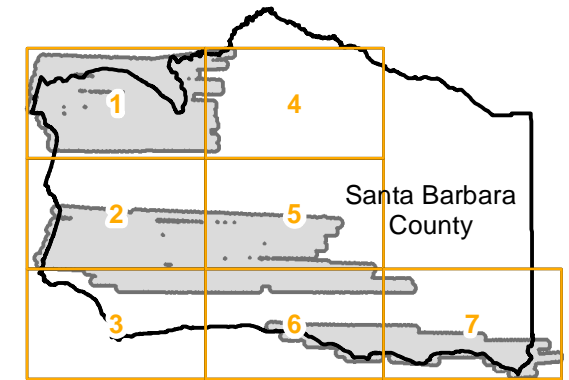
# HA-AN (1:9.6K)

Counties: Santa Barbara  
Flight date(s): 02-17-1956 to 06-04-1956  
Scale: 1:9,600  
Overlap: 60%

Note: 1:9,600 scale photographs are 9" X 9"; 1:12,000 scale photographs are 9" X 18". See HA\_AN\_12 index for 1:12,000 scale coverage;

Complete Metadata:  
<http://www.library.ucsb.edu/mil/aerial-photography-tools>

## FLIGHT LOCATION



0 5 10 20 Miles

Index to Aerial Photography  
Page Key

Scale of this index: 1:425,000

# HA-AN (1:9.6K)

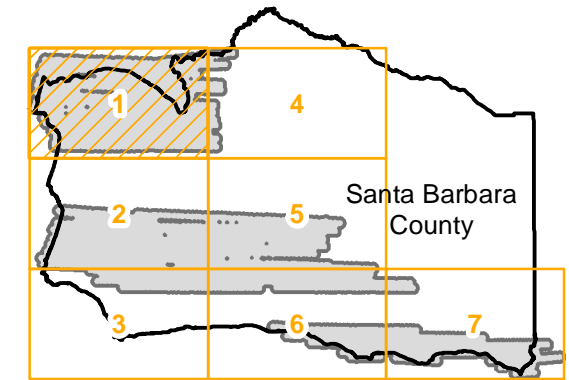
Counties: Santa Barbara  
Flight date(s): 02-17-1956 to 06-04-1956  
Scale: 1:9,600  
Overlap: 60%

Complete Metadata:  
<http://www.library.ucsb.edu/mil/aerial-photography-tools>

Note: 1:9,600 scale photographs are 9" X 9"; 1:12,000 scale photographs are 9" X 18". See HA\_AN\_12 index for 1:12,000 scale coverage;

- MIL owns frame
- MIL does not own frame

## FLIGHT LOCATION



0 2 4 8 Miles

Index to Aerial Photography  
Page 1 of 7

Scale of this index: 1:140,000

Copyright: © 2013 National Geographic Society, i-cubed

# HA-AN (1:9.6K)

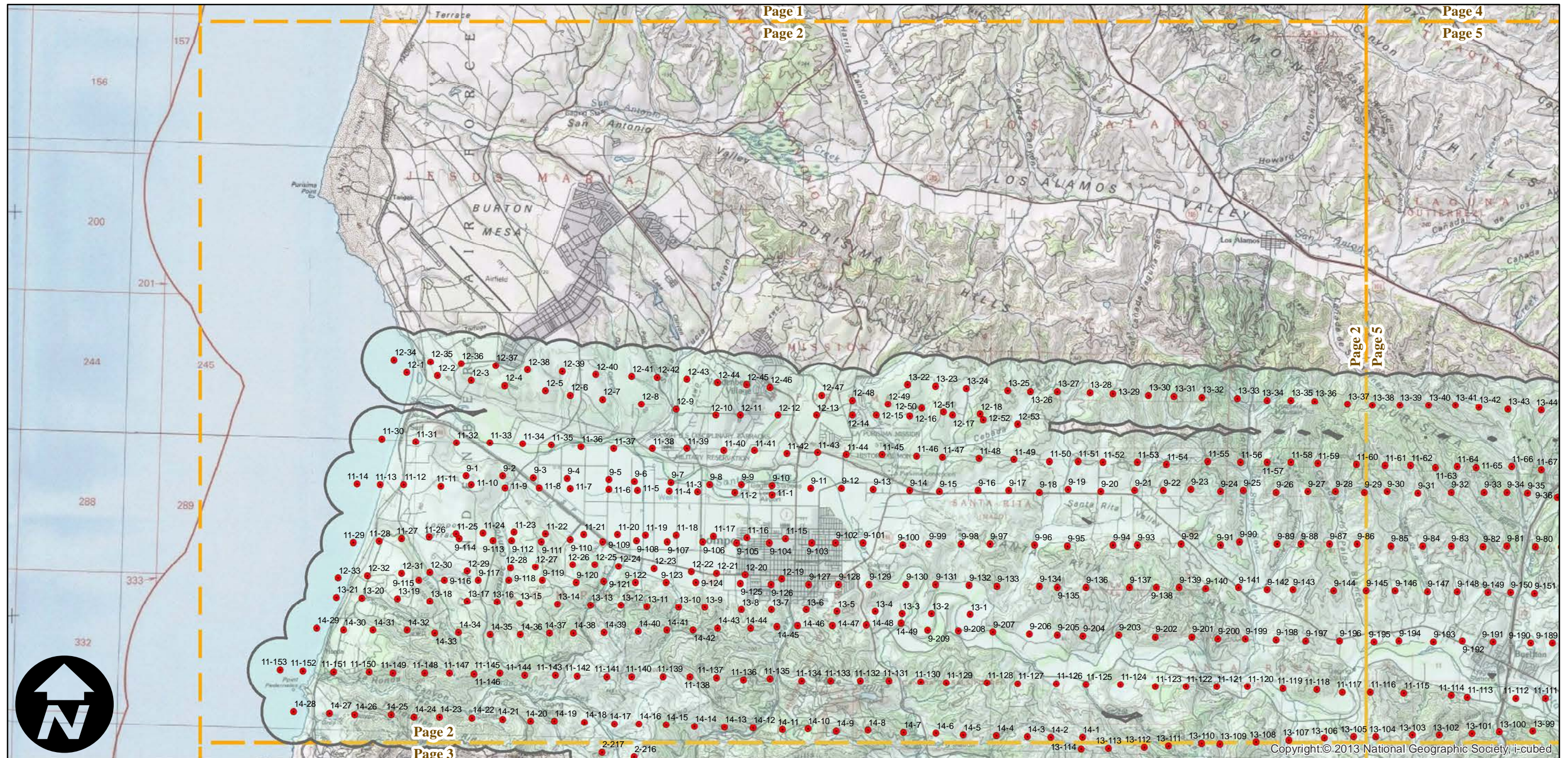
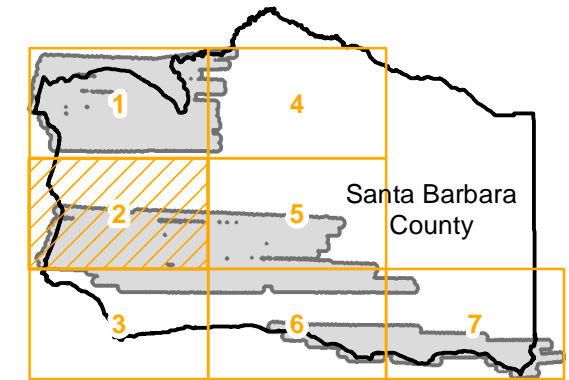
Counties: Santa Barbara  
 Flight date(s): 02-17-1956 to 06-04-1956  
 Scale: 1:9,600  
 Overlap: 60%

Complete Metadata:  
<http://www.library.ucsb.edu/mil/aerial-photography-tools>

Note: 1:9,600 scale photographs are 9" X 9"; 1:12,000 scale photographs are 9" X 18". See HA\_AN\_12 index for 1:12,000 scale coverage;

- MIL owns frame
- MIL does not own frame

## FLIGHT LOCATION



0 2 4 8 Miles

Index to Aerial Photography  
 Page 2 of 7

Scale of this index: 1:140,000

Copyright © 2013 National Geographic Society, i-cubed

# HA-AN (1:9.6K)

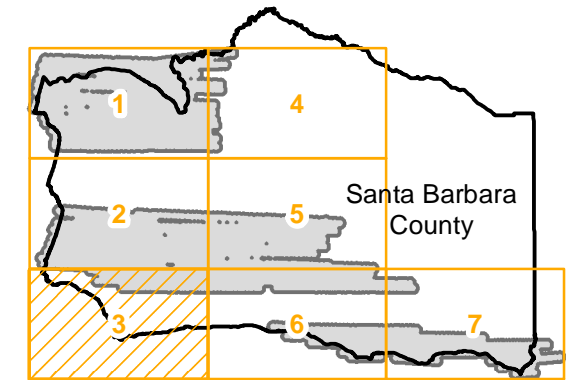
Counties: Santa Barbara  
Flight date(s): 02-17-1956 to 06-04-1956  
Scale: 1:9,600  
Overlap: 60%

Complete Metadata:  
<http://www.library.ucsb.edu/mil/aerial-photography-tools>

Note: 1:9,600 scale photographs are 9" X 9"; 1:12,000 scale photographs are 9" X 18". See HA\_AN\_12 index for 1:12,000 scale coverage;

- MIL owns frame
- MIL does not own frame

## FLIGHT LOCATION



# HA-AN (1:9.6K)

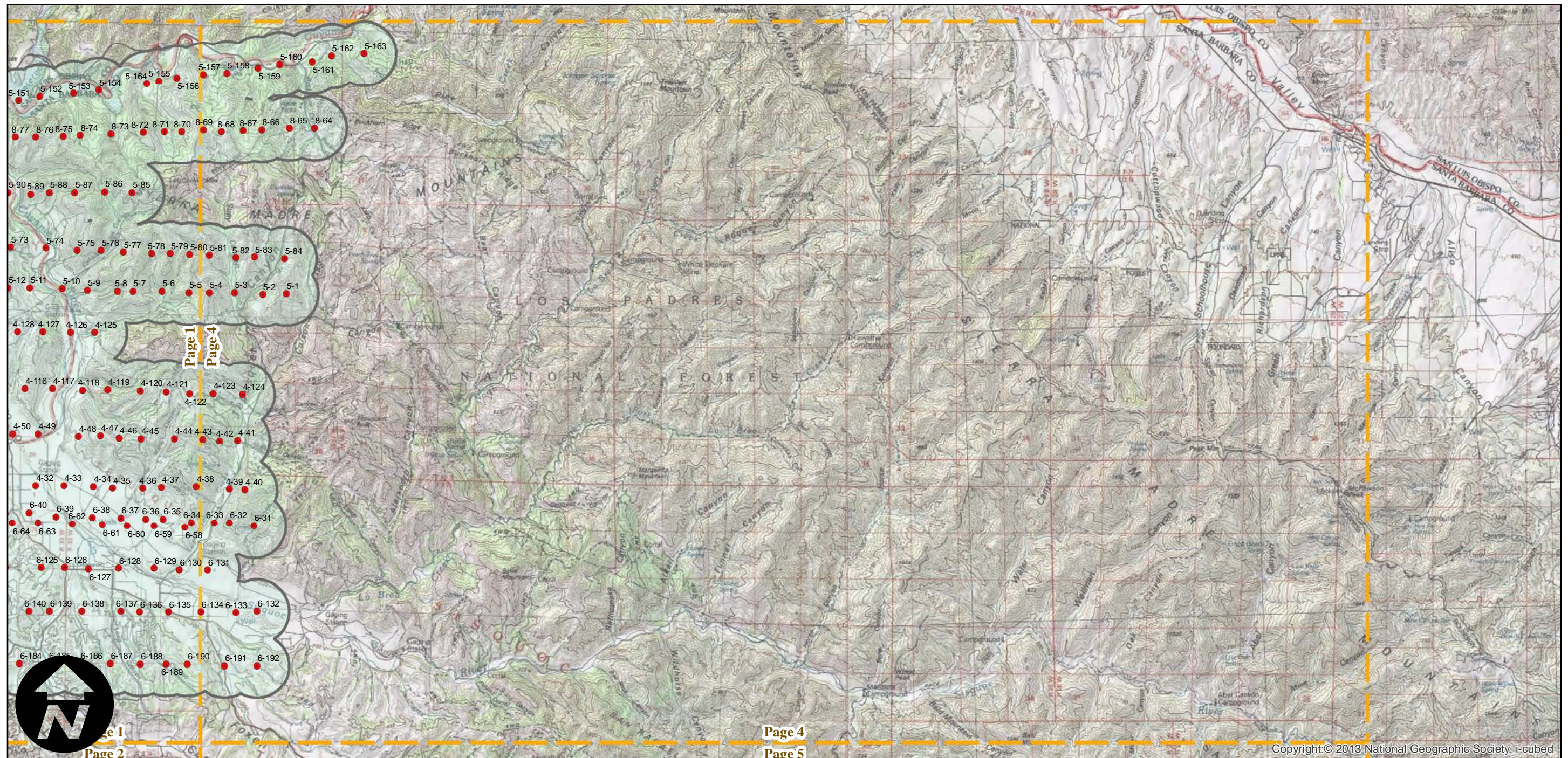
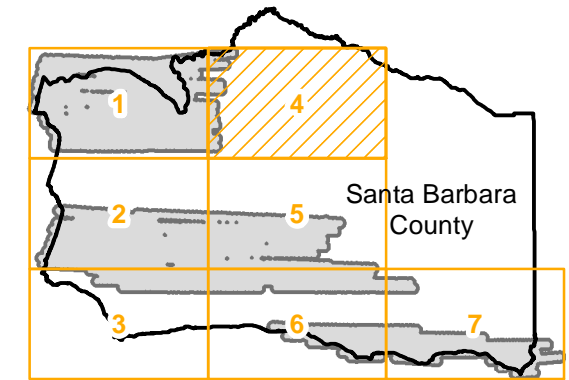
Counties: Santa Barbara  
 Flight date(s): 02-17-1956 to 06-04-1956  
 Scale: 1:9,600  
 Overlap: 60%

Complete Metadata:  
<http://www.library.ucsb.edu/mil/aerial-photography-tools>

Note: 1:9,600 scale photographs are 9" X 9"; 1:12,000 scale photographs are 9" X 18". See HA\_AN\_12 index for 1:12,000 scale coverage;

- MIL owns frame
- MIL does not own frame

## FLIGHT LOCATION



0 2 4 8 Miles

Index to Aerial Photography  
 Page 4 of 7

Scale of this index: 1:140,000

# HA-AN (1:9.6K)

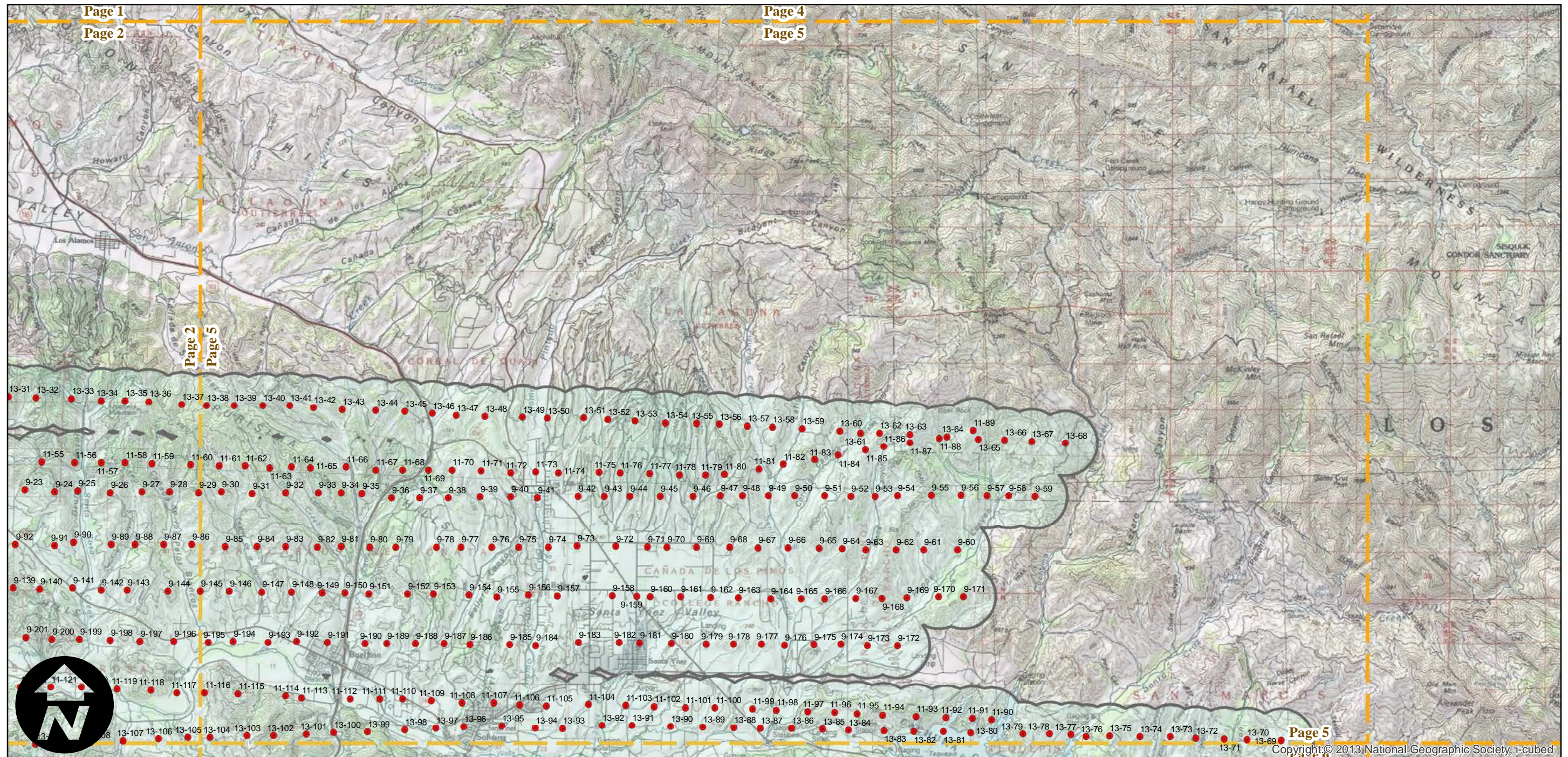
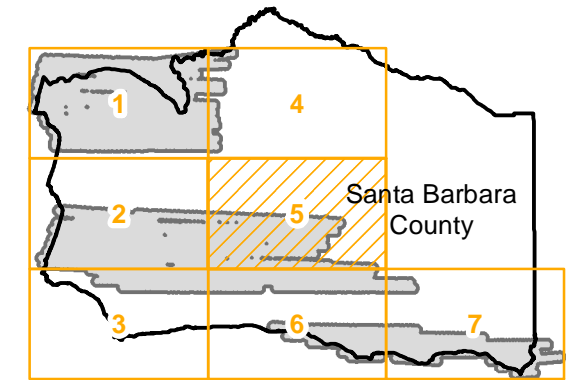
Counties: Santa Barbara  
 Flight date(s): 02-17-1956 to 06-04-1956  
 Scale: 1:9,600  
 Overlap: 60%

Complete Metadata:  
<http://www.library.ucsb.edu/mil/aerial-photography-tools>

Note: 1:9,600 scale photographs are 9" X 9"; 1:12,000 scale photographs are 9" X 18". See HA\_AN\_12 index for 1:12,000 scale coverage;

- MIL owns frame
- MIL does not own frame

## FLIGHT LOCATION



# HA-AN (1:9.6K)

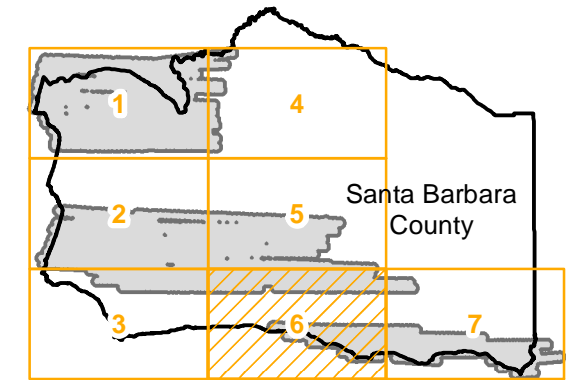
Counties: Santa Barbara  
 Flight date(s): 02-17-1956 to 06-04-1956  
 Scale: 1:9,600  
 Overlap: 60%

Complete Metadata:  
<http://www.library.ucsb.edu/mil/aerial-photography-tools>

Note: 1:9,600 scale photographs are 9" X 9"; 1:12,000 scale photographs are 9" X 18". See HA\_AN\_12 index for 1:12,000 scale coverage;

- MIL owns frame
- MIL does not own frame

## FLIGHT LOCATION



Copyright:© 2013 National Geographic Society, i-cubed

0 2 4 8 Miles

Index to Aerial Photography  
 Page 6 of 7

Scale of this index: 1:140,000

# HA-AN (1:9.6K)

Counties: Santa Barbara  
 Flight date(s): 02-17-1956 to 06-04-1956  
 Scale: 1:9,600  
 Overlap: 60%

Complete Metadata:  
<http://www.library.ucsb.edu/mil/aerial-photography-tools>

Note: 1:9,600 scale photographs are 9" X 9"; 1:12,000 scale photographs are 9" X 18". See HA\_AN\_12 index for 1:12,000 scale coverage;

- MIL owns frame
- MIL does not own frame

## FLIGHT LOCATION

