

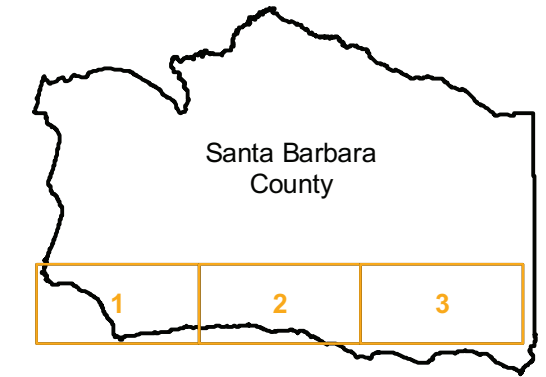
HA-AN (1:12K)

Counties: Santa Barbara
Flight date(s): 02-17-1956 to 06-04-1956
Scale: 1:12,000
Overlap: 60%

Note: 1:9,600 scale photographs are 9" X 9"; 1:12,000 scale photographs are 9" X 18". See HA_AN_9 index for 1:9,600 scale coverage;

Complete Metadata:
<http://www.library.ucsb.edu/mil/aerial-photography-tools>

FLIGHT LOCATION



0 5 10 20 Miles

Index to Aerial Photography
Page Key

Scale of this index: 1:300,000

HA-AN (1:12K)

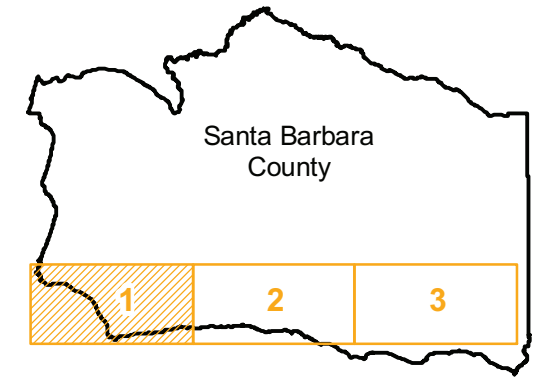
Counties: Santa Barbara
Flight date(s): 02-17-1956 to 06-04-1956
Scale: 1:12,000
Overlap: 60%

Complete Metadata:
<http://www.library.ucsb.edu/mil/aerial-photography-tools>

Note: 1:9,600 scale photographs are 9" X 9"; 1:12,000 scale photographs are 9" X 18". See HA_AN_9 index for 1:9,600 scale coverage;

- MIL owns frame
- MIL does not own frame

FLIGHT LOCATION



0 1.25 2.5 5 Miles

Index to Aerial Photography
Page 1 of 3

Scale of this index: 1:100,000

HA-AN (1:12K)

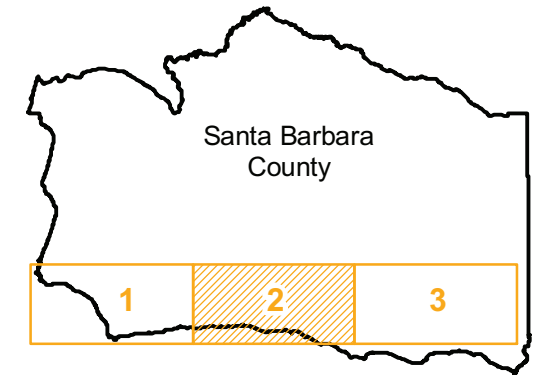
Counties: Santa Barbara
Flight date(s): 02-17-1956 to 06-04-1956
Scale: 1:12,000
Overlap: 60%

Complete Metadata:
<http://www.library.ucsb.edu/mil/aerial-photography-tools>

Note: 1:9,600 scale photographs are 9" X 9"; 1:12,000 scale photographs are 9" X 18". See HA_AN_9 index for 1:9,600 scale coverage;

- MIL owns frame
- MIL does not own frame

FLIGHT LOCATION



0 1.25 2.5 5 Miles

Index to Aerial Photography
Page 2 of 3

Scale of this index: 1:100,000

HA-AN (1:12K)

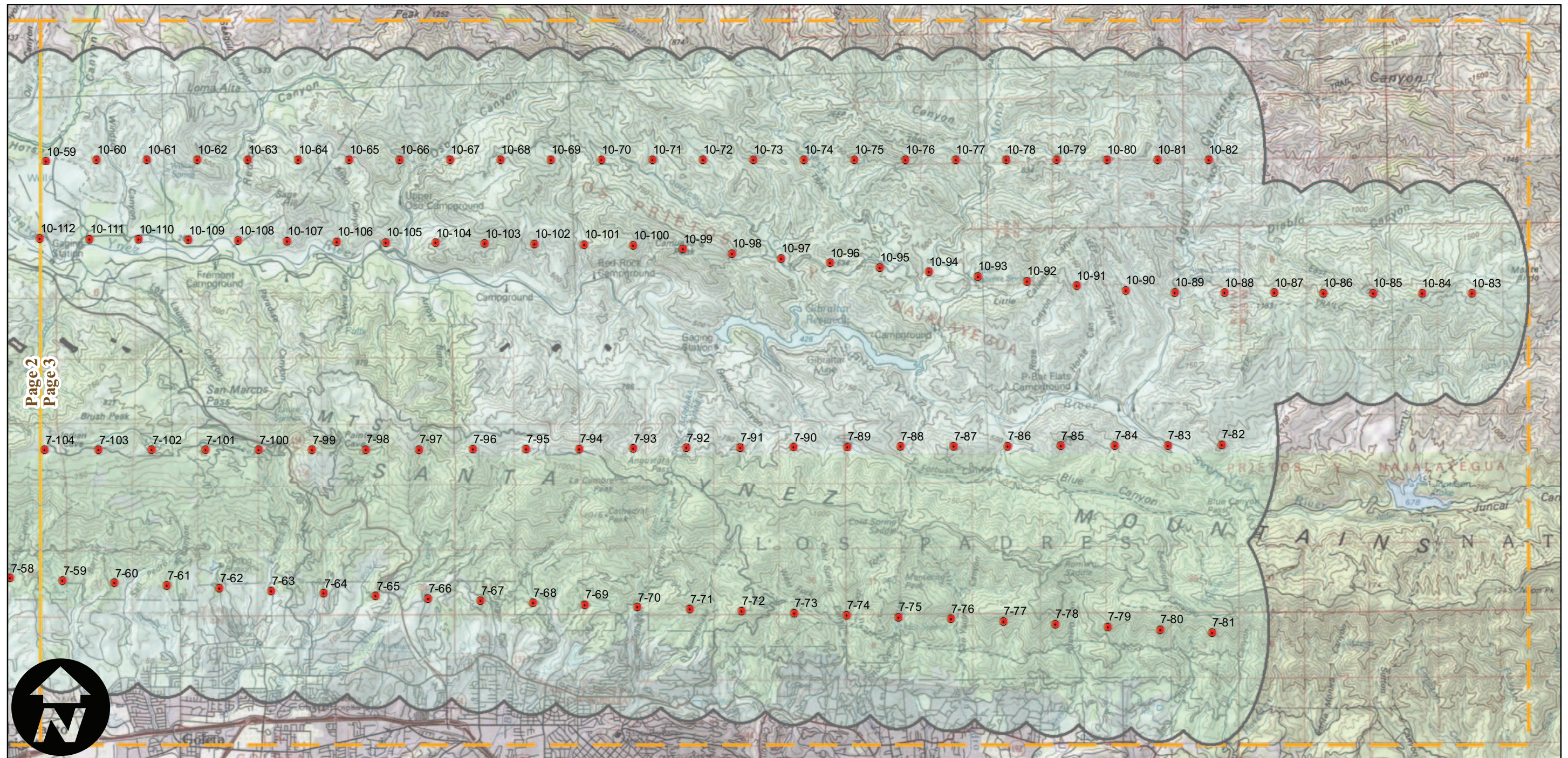
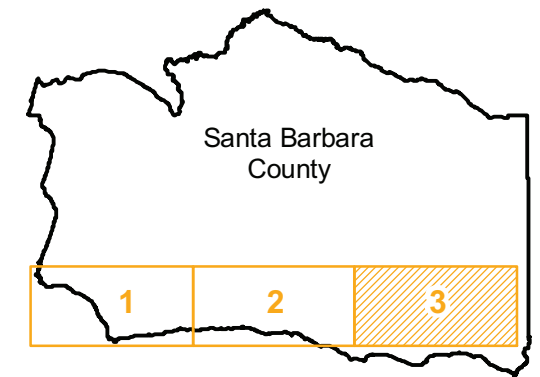
Counties: Santa Barbara
Flight date(s): 02-17-1956 to 06-04-1956
Scale: 1:12,000
Overlap: 60%

Note: 1:9,600 scale photographs are 9" X 9"; 1:12,000 scale photographs are 9" X 18". See HA_AN_9 index for 1:9,600 scale coverage;

Complete Metadata:
<http://www.library.ucsb.edu/mil/aerial-photography-tools>

- MIL owns frame
- MIL does not own frame

FLIGHT LOCATION



0 1.25 2.5 5 Miles

Index to Aerial Photography
Page 3 of 3

Scale of this index: 1:100,000