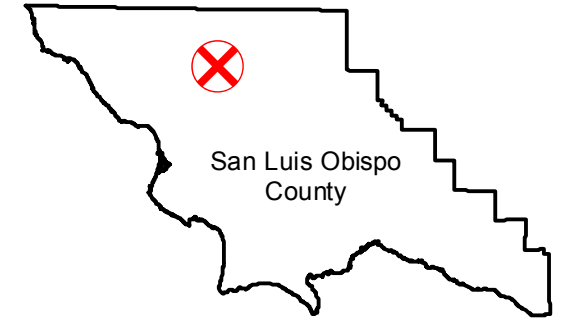


GS-1383 (1:9.6K)

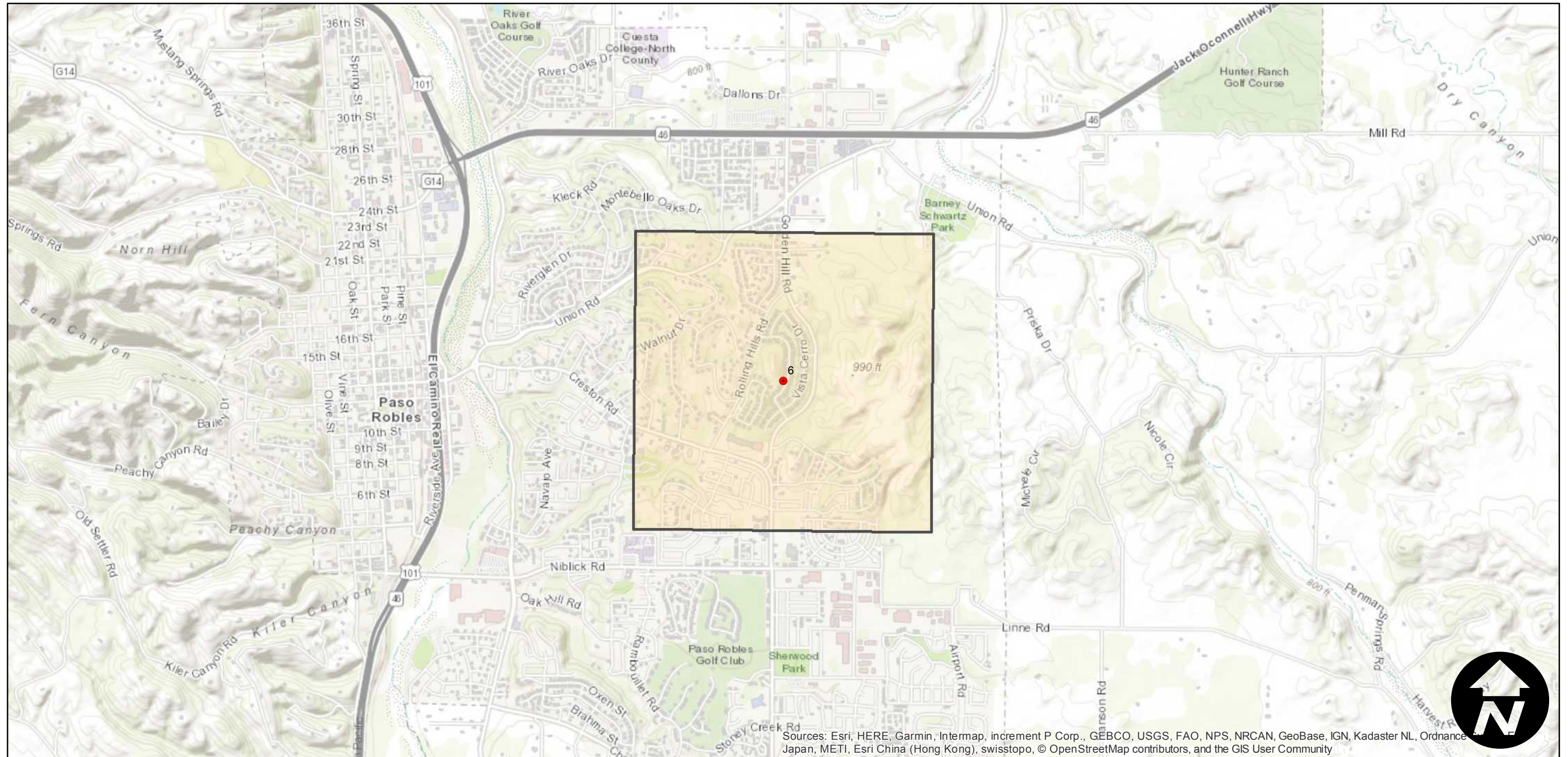
Counties: San Luis Obispo
Flight date(s): 02-05-1990
Scale: 1:9,600
Overlap: 0%

Note: Paso Robles; Rolling Hills Road and vicinity.

FLIGHT LOCATION



Complete Metadata:
<https://www.library.ucsb.edu/src/airphotos/aerial-photography-information>



Sources: Esri, HERE, Garmin, Intermap, increment P Corp., GEBCO, USGS, FAO, NPS, NRCAN, GeoBase, IGN, Kadaster NL, Ordnance
Japan, METI, Esri China (Hong Kong), swisstopo, © OpenStreetMap contributors, and the GIS User Community

0 0.5 1 2 Miles

Index to Aerial Photography
Page 1 of 1

Scale of this index: 1:30,000