

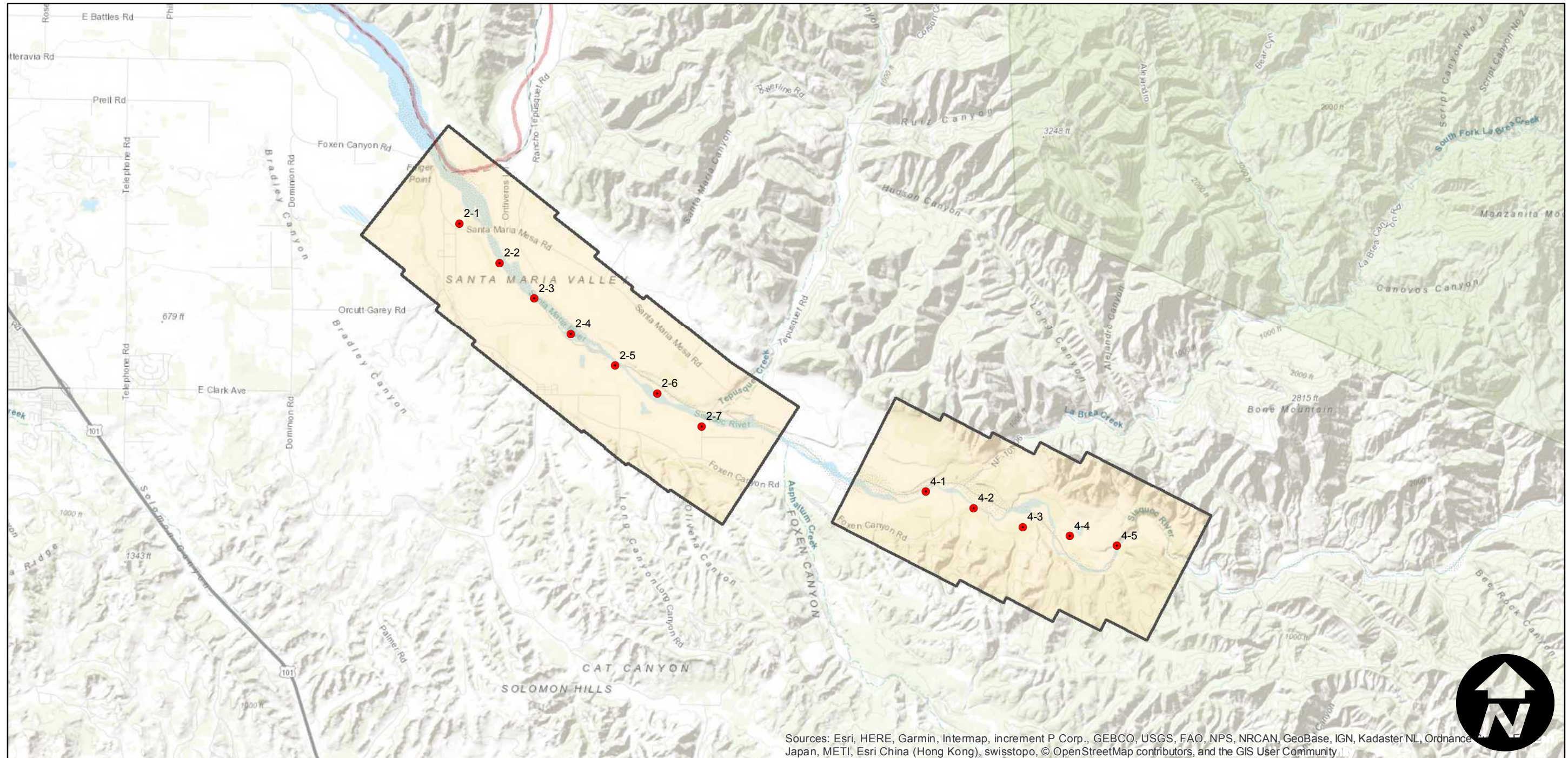
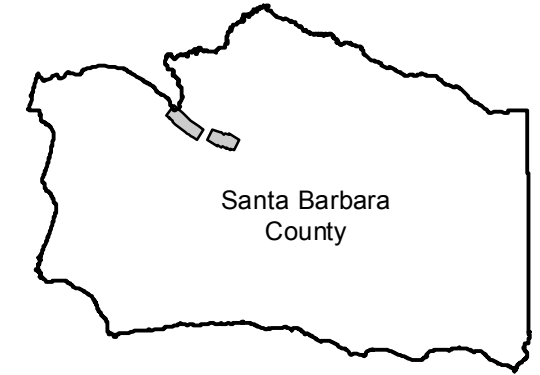
GS-1367

Counties: Santa Barbara
Flight date(s): 01-17-1990
Scale: 1:12,000
Overlap: 60%

Complete Metadata:
<https://www.library.ucsb.edu/src/airphotos/aerial-photography-information>

Note: Santa Maria River, from the junction of Foxen Canyon Road and Santa Maria Mesa Road to the vicinity of Round Corral Canyon.

FLIGHT LOCATION



Sources: Esri, HERE, Garmin, Intermap, increment P Corp., GEBCO, USGS, FAO, NPS, NRCAN, GeoBase, IGN, Kadaster NL, Ordnance Survey, Esri China (Hong Kong), Swisstopo, © OpenStreetMap contributors, and the GIS User Community



0 1 2 4 Miles

Index to Aerial Photography
Page 1 of 1

Scale of this index: 1:80,000