

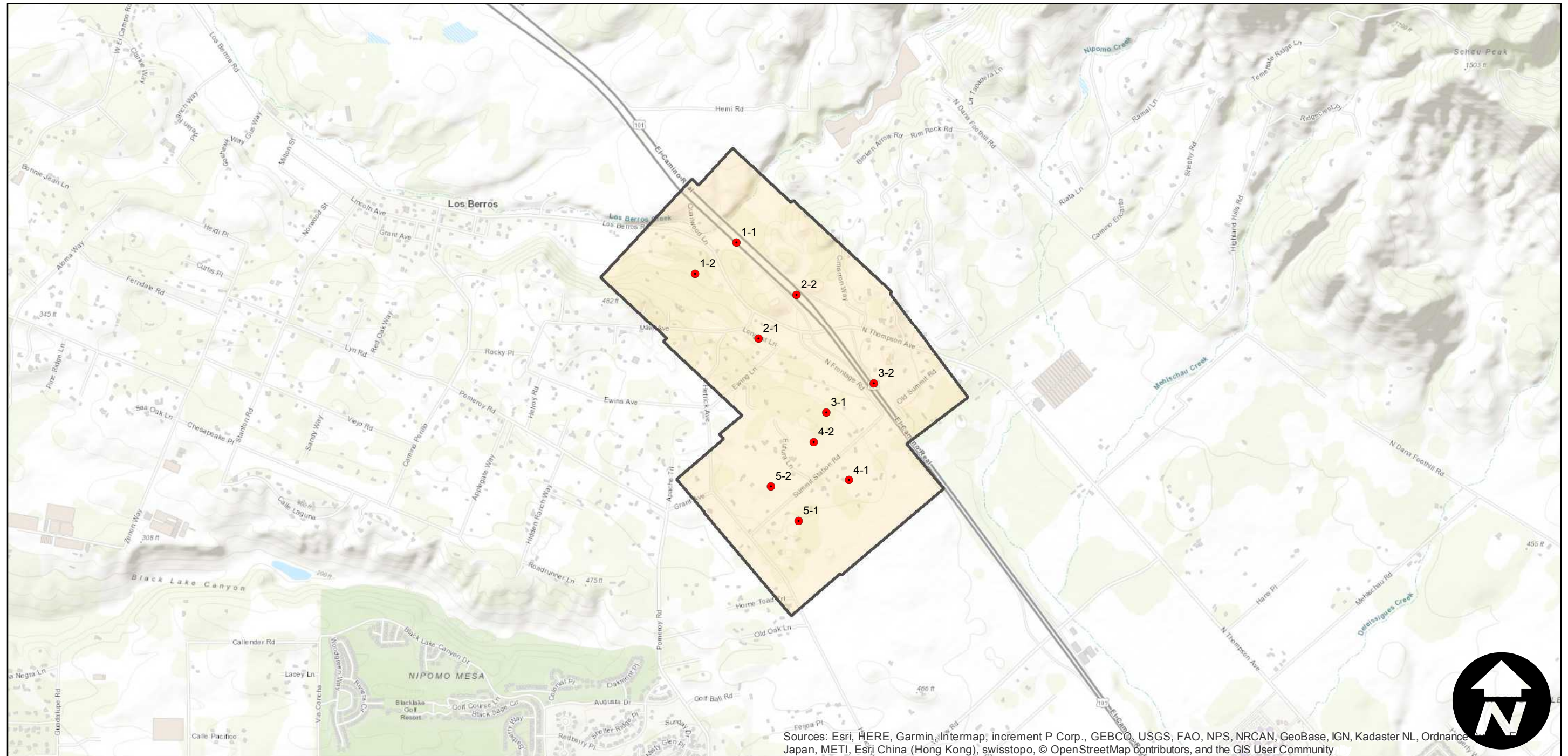
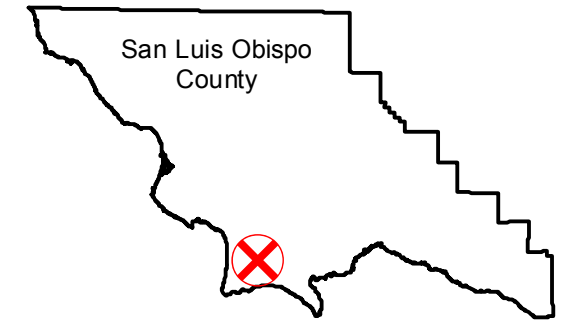
GS-1364

Counties: San Luis Obispo
Flight date(s): 01-11-1990
Scale: 1:3,600
Overlap: 60%

Complete Metadata:
<https://www.library.ucsb.edu/src/airphotos/aerial-photography-information>

Note: Arroyo Grande; Vicinity of Cimarron Way, Highway 101, Los Berros Road (from Quailwood Lane to North Thompson Avenue), North Frontage Road, Old Summit Road, and Summit Station Road.

FLIGHT LOCATION



Sources: Esri, HERE, Garmin, Intermap, increment P Corp., GEBCO, USGS, FAO, NPS, NRCAN, GeoBase, IGN, Kadaster NL, Ordnance Survey, Esri, METI, Esri China (Hong Kong), swisstopo, © OpenStreetMap contributors, and the GIS User Community

