

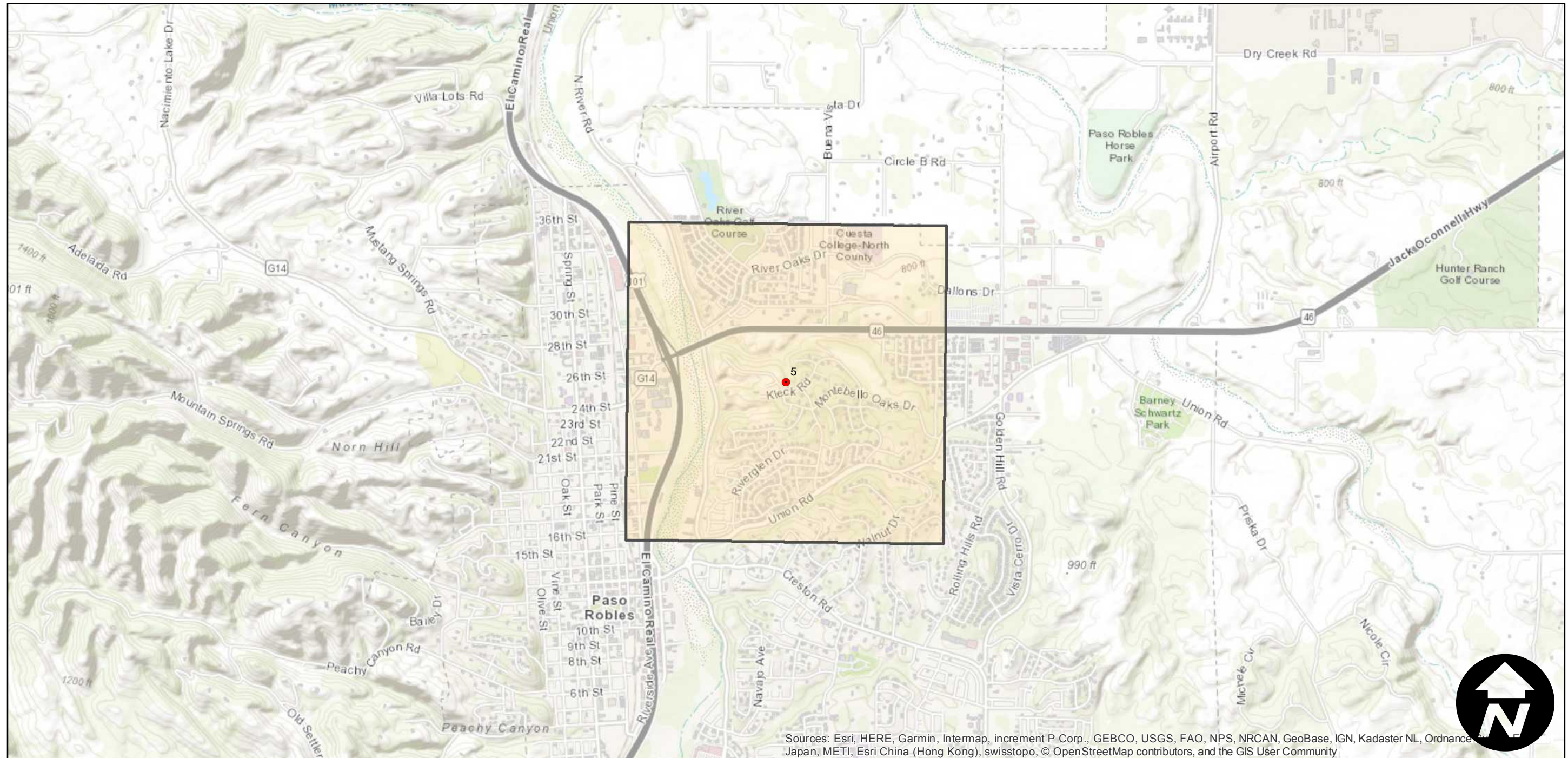
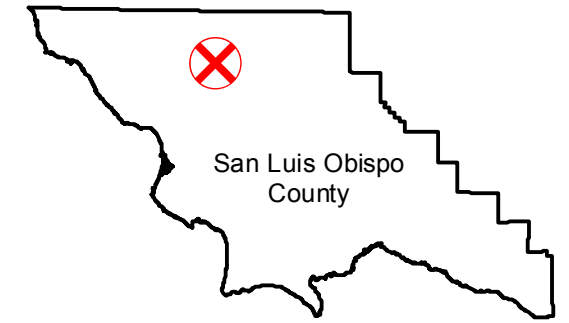
GS-1327 (1:10.2K)

Counties: San Luis Obispo
Flight date(s): 11-29-1989 to 02-05-1990
Scale: 1:10,200
Overlap: 0%

Complete Metadata:
<https://www.library.ucsb.edu/src/airphotos/aerial-photography-information>

Note: Paso Robles; River Road to Arciero Court and vicinity. Flight includes one oblique photograph shot facing the southwest direction towards Templeton. Frames 1 through 4 were photographed on 11/29/1989 and frame 5 plus the oblique were photographed on 2/5/1990.

FLIGHT LOCATION



Sources: Esri, HERE, Garmin, Intermap, increment P Corp., GEBCO, USGS, FAO, NPS, NRCAN, GeoBase, IGN, Kadaster NL, Ordnance Survey, Esri Japan, METI, Esri China (Hong Kong), swisstopo, © OpenStreetMap contributors, and the GIS User Community

