

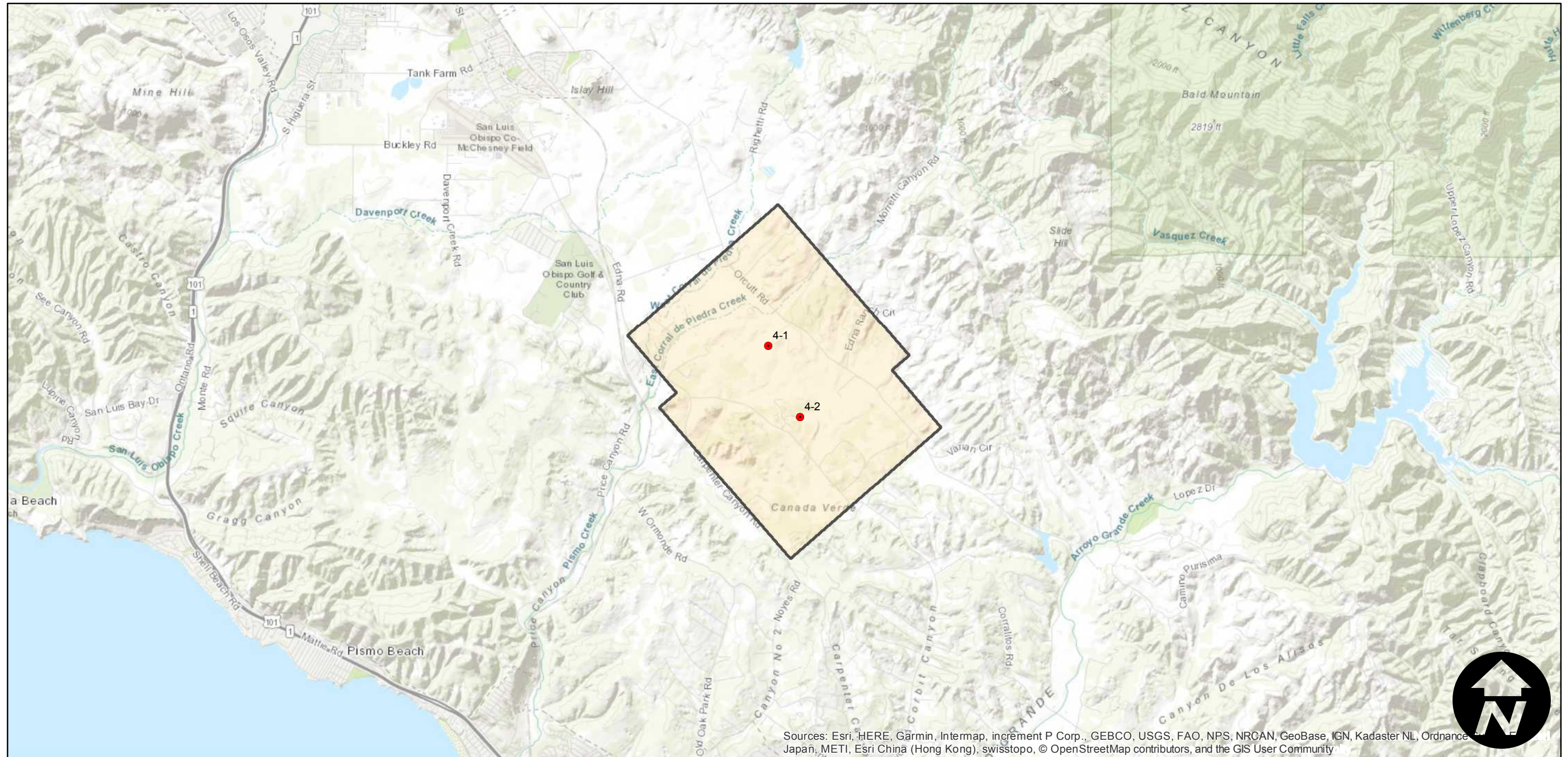
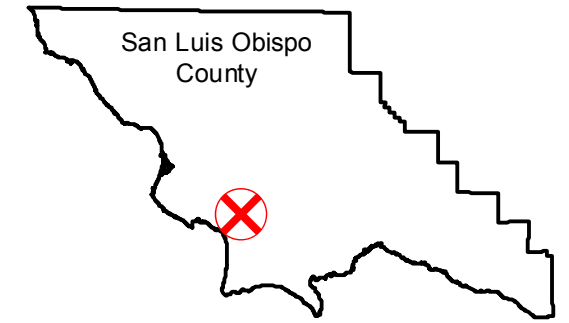
GS-1288 (1:15K)

Counties: San Luis Obispo
Flight date(s): 09-14-1989
Scale: 1:15,000
Overlap: 60%

Complete Metadata:
<https://www.library.ucsb.edu/src/airphotos/aerial-photography-information>

Note: San Luis Obispo; Area between Corbett Canyon Road and Orcutt Road. In the vicinity of Camino Edna.

FLIGHT LOCATION



Sources: Esri, HERE, Garmin, Intermap, increment P Corp., GEBCO, USGS, FAO, NPS, NRCAN, GeoBase, IGN, Kadaster NL, Ordnance Survey, Esri Japan, METI, Esri China (Hong Kong), swisstopo, © OpenStreetMap contributors, and the GIS User Community

0 1 2 4 Miles

Index to Aerial Photography
Page 1 of 1

Scale of this index: 1:70,000