

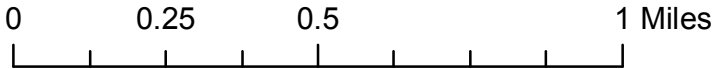
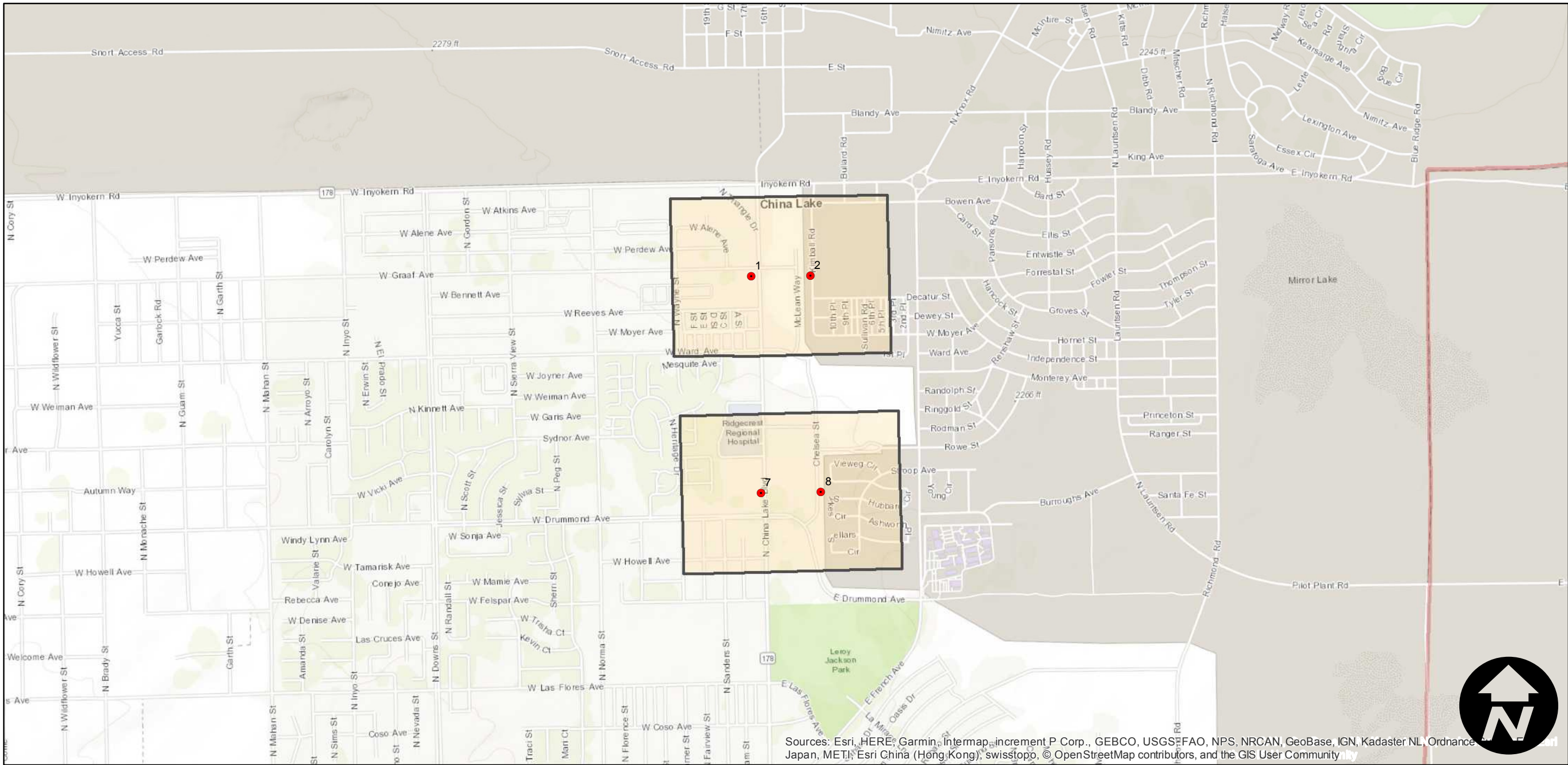
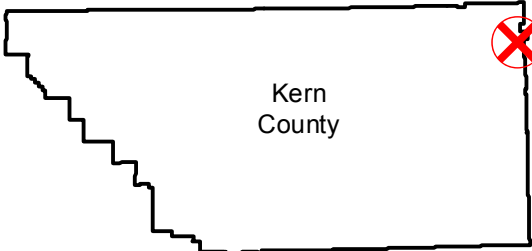
GS-1276 (1:3.3K)

Counties: Kern
Flight date(s): 08-01-1989
Scale: 1:3,360
Overlap: 60%

Complete Metadata:
<https://www.library.ucsb.edu/src/airphotos/aerial-photography-information>

Note: Ridgecrest; Area between Drummond Avenue, North Norma Street, Inyokern Road, and South Knox Road.

FLIGHT LOCATION



Sources: Esri, HERE, Garmin, Intermap, increment P Corp., GEBCO, USGS, FAO, NPS, NRCAN, GeoBase, IGN, Kadaster NL, Ordnance Survey, Esri China (Hong Kong), Swisstopo, © OpenStreetMap contributors, and the GIS User Community