

# GS-1263

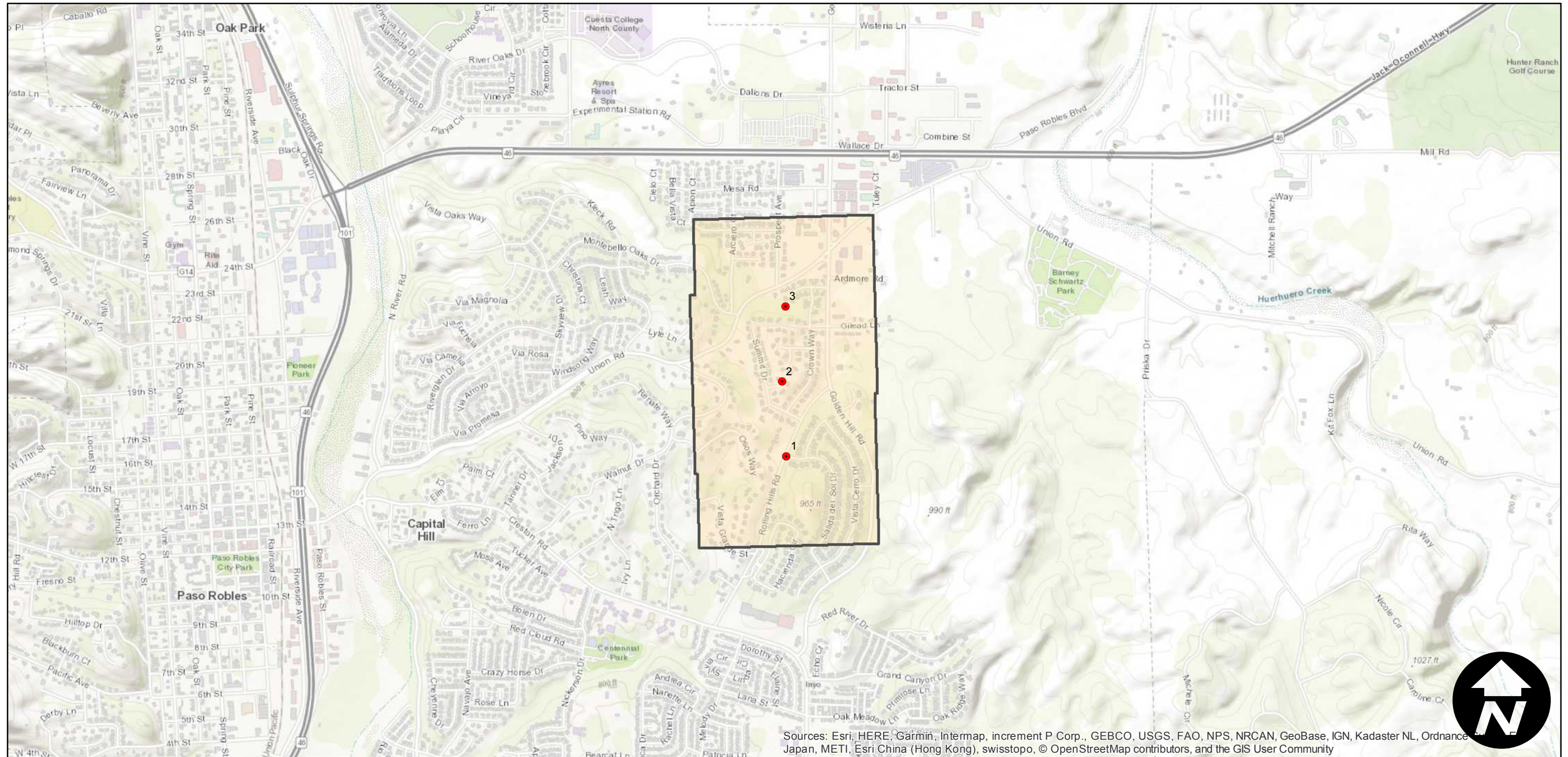
Counties: San Luis Obispo  
Flight date(s): 07-31-1989  
Scale: 1:3,840  
Overlap: 60%

Note: Paso Robles; Vicinity of the junction of Rolling Hills Road and Golden Hill Road.

## FLIGHT LOCATION



Complete Metadata:  
<https://www.library.ucsb.edu/src/airphotos/aerial-photography-information>



Sources: Esri, HERE, Garmin, Intermap, increment P Corp., GEBCO, USGS, FAO, NPS, NRCAN, GeoBase, IGN, Kadaster NL, Ordnance Survey, Esri Japan, METI, Esri China (Hong Kong), swisstopo, © OpenStreetMap contributors, and the GIS User Community

