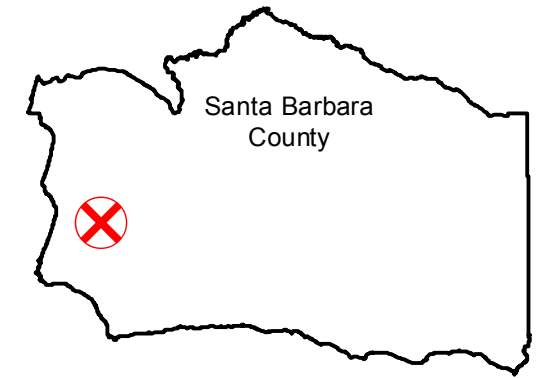


# GS-1246 (1:12K)

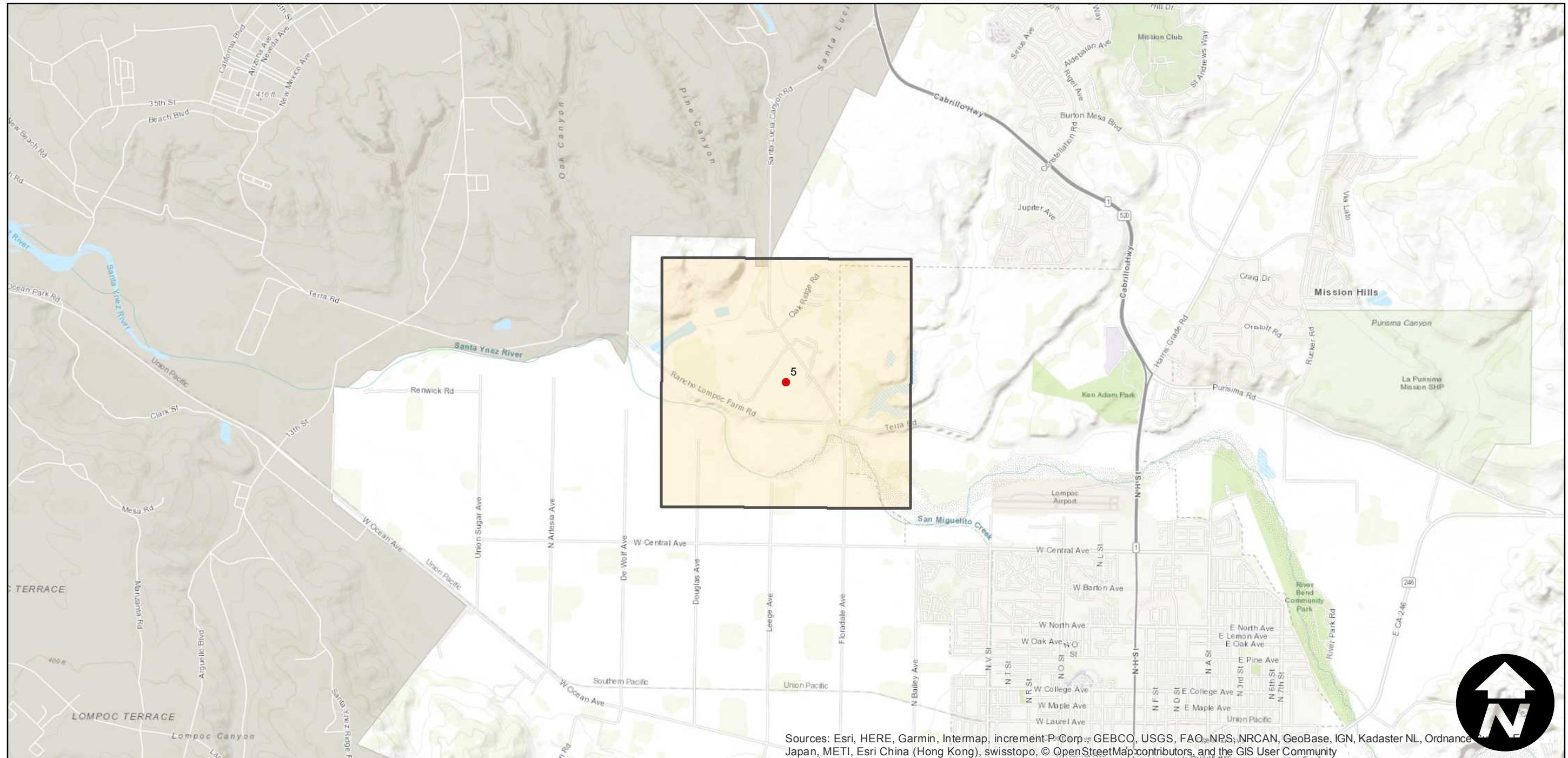
Counties: Santa Barbara  
Flight date(s): 06-29-1989  
Scale: 1:12,000  
Overlap: 0%

Note: Lompoc; Klein Boulevard and vicinity (site of present day Federal Correctional Institution, Lompoc).

## FLIGHT LOCATION



Complete Metadata:  
<https://www.library.ucsb.edu/src/airphotos/aerial-photography-information>



Sources: Esri, HERE, Garmin, Intermap, increment P Corp., GEBCO, USGS, FAO, NRS, NRCAN, GeoBase, IGN, Kadaster NL, Ordnance Survey, Esri China (Hong Kong), Swisstopo, © OpenStreetMap contributors, and the GIS User Community

0 0.5 1 2 Miles

Scale of this index: 1:45,000