

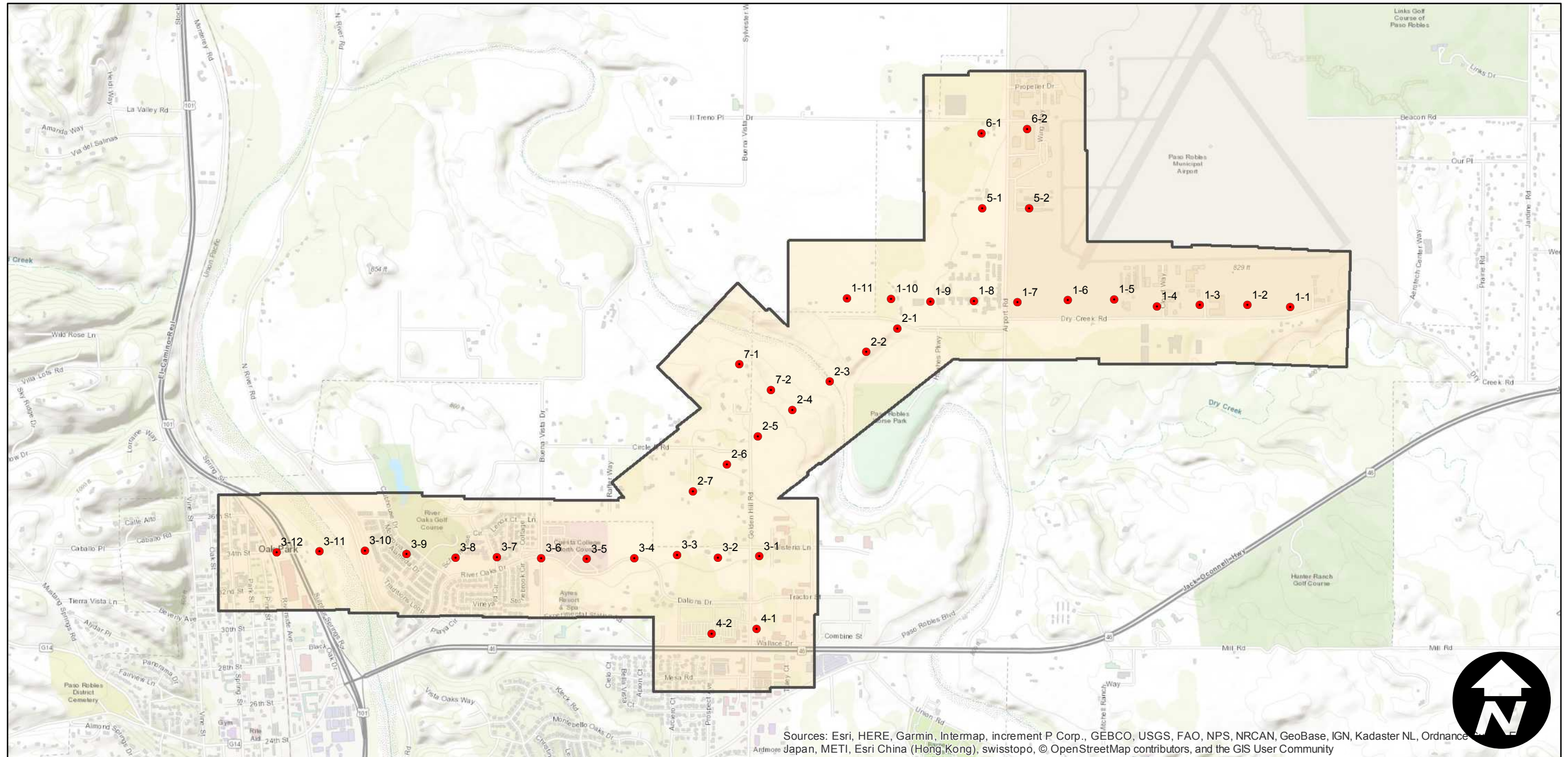
GS-1196

Counties: San Luis Obispo
Flight date(s): 03-29-1989
Scale: 1:3,120
Overlap: 60%

Complete Metadata:
<https://www.library.ucsb.edu/src/airphotos/aerial-photography-information>

Note: Paso Robles; The southwest area of Paso Robles Municipal Airport to Oak Park. Covers Dry Creek Road, Airport Road, Dallons Drive, and River Oaks Drive.

FLIGHT LOCATION



Sources: Esri, HERE, Garmin, Intermap, increment P Corp., GEBCO, USGS, FAO, NPS, NRCAN, GeoBase, IGN, Kadaster NL, Ordnance Survey, Esri Japan, METI, Esri China (Hong Kong), swisstopo, © OpenStreetMap contributors, and the GIS User Community



0 0.5 1 2 Miles

Index to Aerial Photography
Page 1 of 1

Scale of this index: 1:25,000