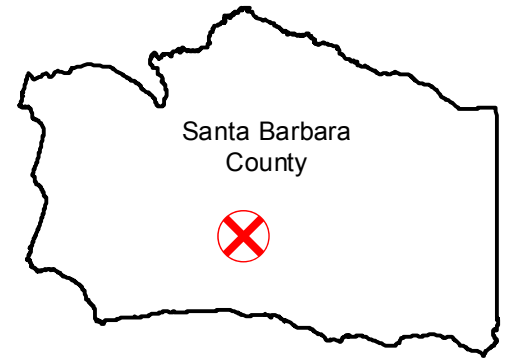


# GS-1108

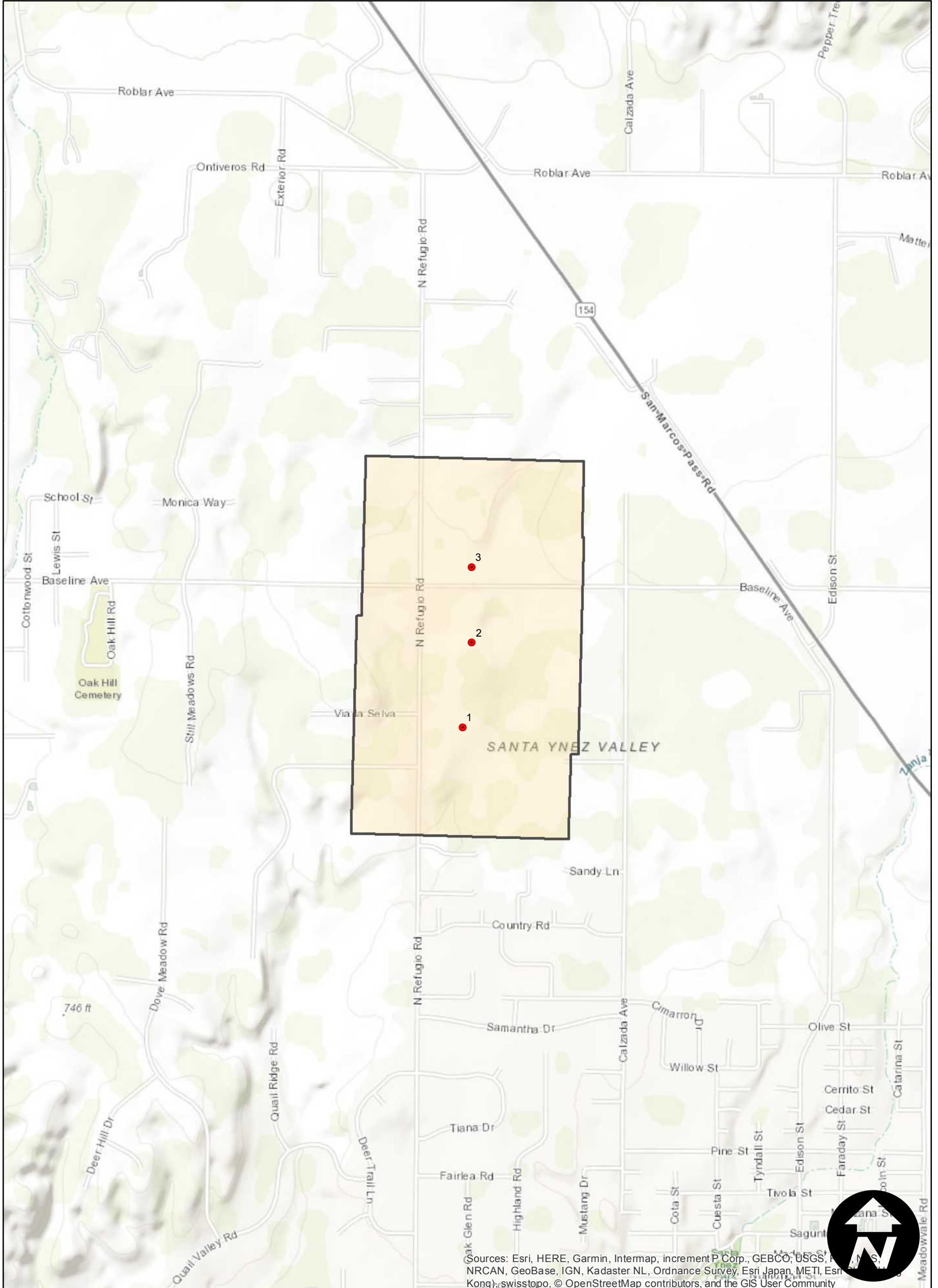
Counties: Santa Barbara  
Flight date(s): 10-10-1988  
Scale: 1:3,720  
Overlap: 60%

Note: Santa Ynez; Vicinity  
of the intersection of North  
Refugio Road and  
Baseline Avenue.

## FLIGHT LOCATION



Complete Metadata:  
<https://www.library.ucsb.edu/src/airphotos/aerial-photography-information>



Sources: Esri, HERE, Garmin, Intermap, increment P Corp., GEBCO, USGS, NRCAN, GeoBase, IGN, Kadaster NL, Ordnance Survey, Esri Japan, METI, Esri (Korea), Swisstopo, © OpenStreetMap contributors, and the GIS User Community

0 0.15 0.3 0.6 Miles

Index to Aerial Photography  
Page 1 of 1

Scale of this index: 1:15,000