

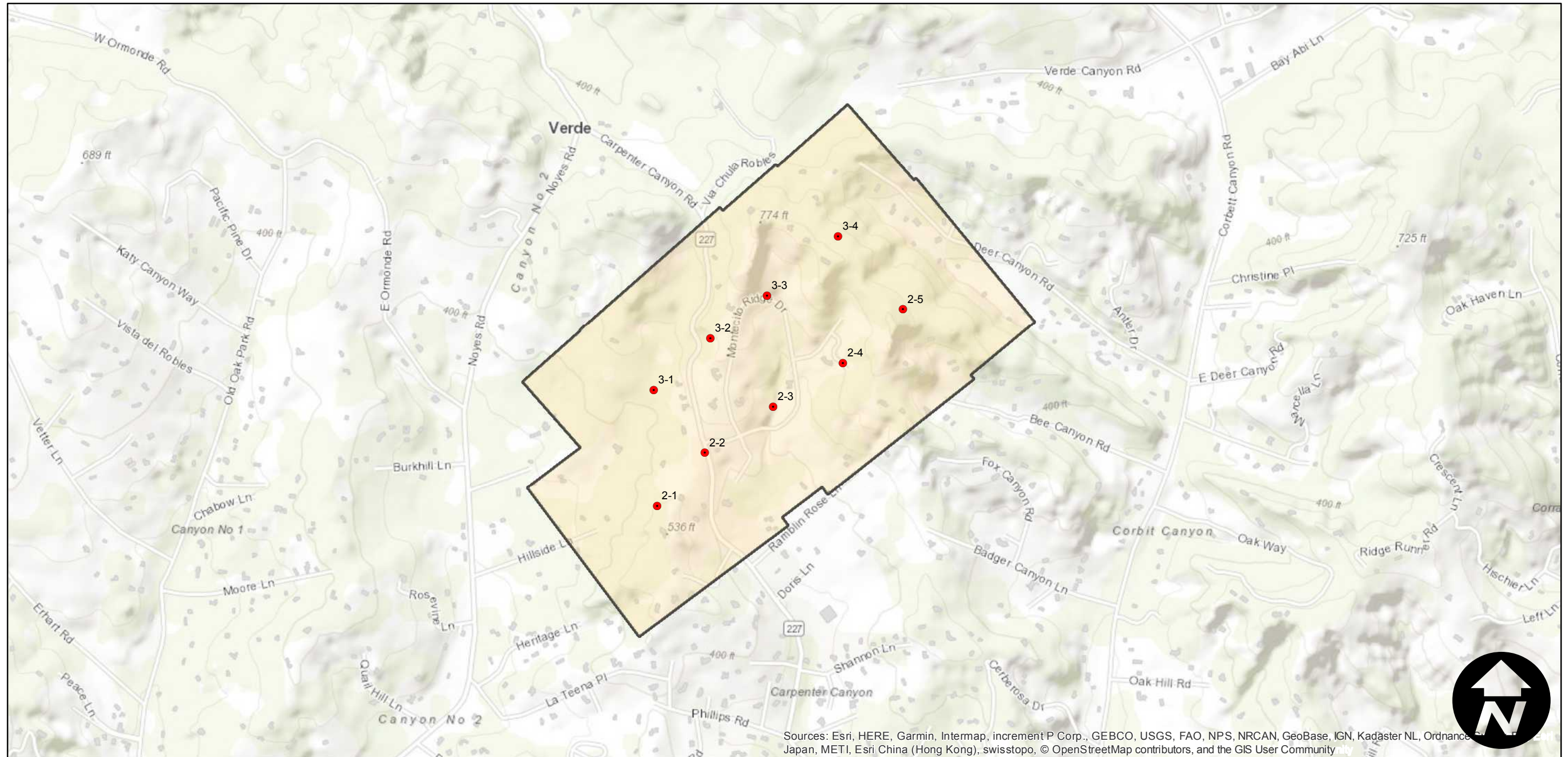
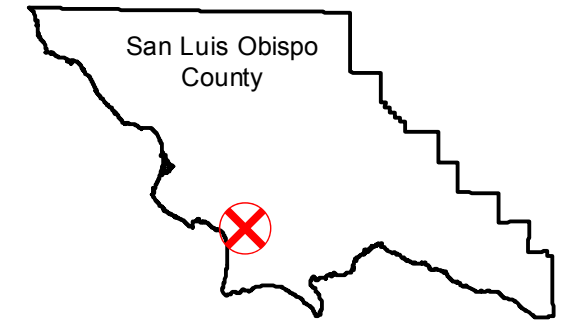
GS-1073 (1:3K)

Counties: San Luis Obispo
Flight date(s): 07-07-1988
Scale: 1:3,000
Overlap: 60%

Complete Metadata:
<https://www.library.ucsb.edu/src/airphotos/aerial-photography-information>

Note: Arroyo Grande; Area off of Highway 227, between Ramblin Rose Way, Deer Canyon Road, and Montecito Ridge Drive.

FLIGHT LOCATION



0 0.25 0.5 1 Miles

Index to Aerial Photography
Page 1 of 1

Scale of this index: 1:15,000

Sources: Esri, HERE, Garmin, Intermap, increment P Corp., GEBCO, USGS, FAO, NPS, NRCAN, GeoBase, IGN, Kadaster NL, Ordnance Survey, Esri Japan, METI, Esri China (Hong Kong), swisstopo, © OpenStreetMap contributors, and the GIS User Community