

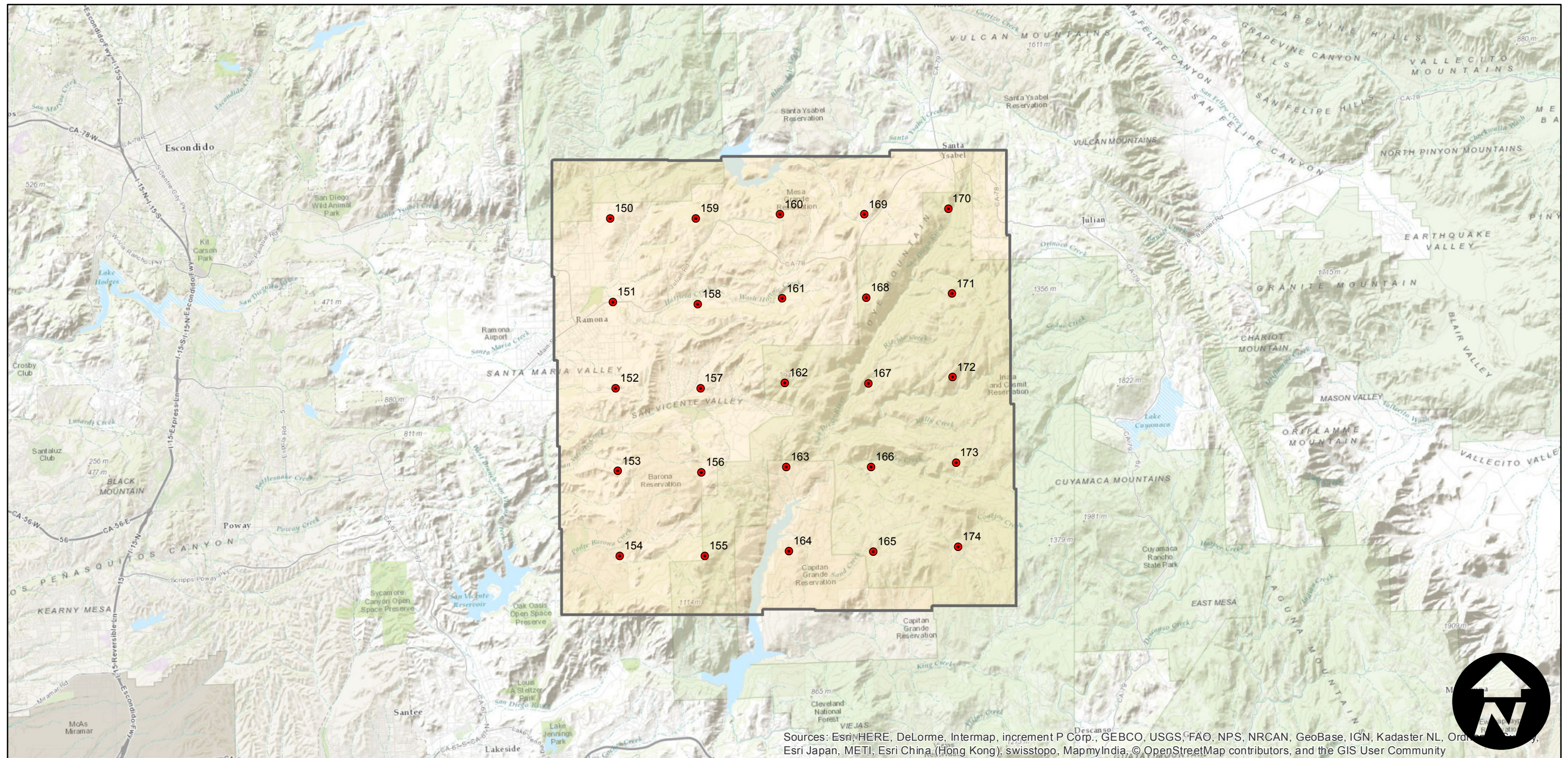
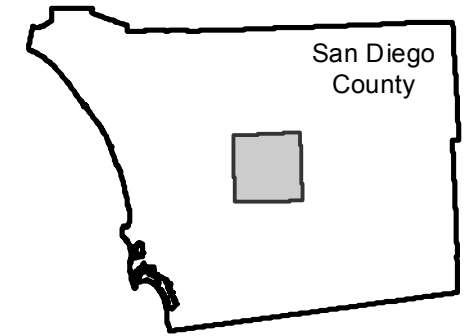
EAG-SDN-06

Counties: San Diego
Flight date(s): 11-08-2006
Scale: 1:25,000
Overlap: 30%

Complete Metadata:
<http://www.library.ucsb.edu/mil/aerial-photography-tools>

Note: Cuyamaca Mountains east of Ramona. Mesa Grande Reservation to El Capitan Reservoir. Imagery acquired December 2013.

FLIGHT LOCATION



Sources: Esri, HERE, DeLorme, Intermap, increment P Corp., GEBCO, USGS, FAO, NPS, NRCAN, GeoBase, IGN, Kadaster NL, Ordnance Survey, Esri Japan, METI, Esri China (Hong Kong), swisstopo, MapmyIndia, © OpenStreetMap contributors, and the GIS User Community

