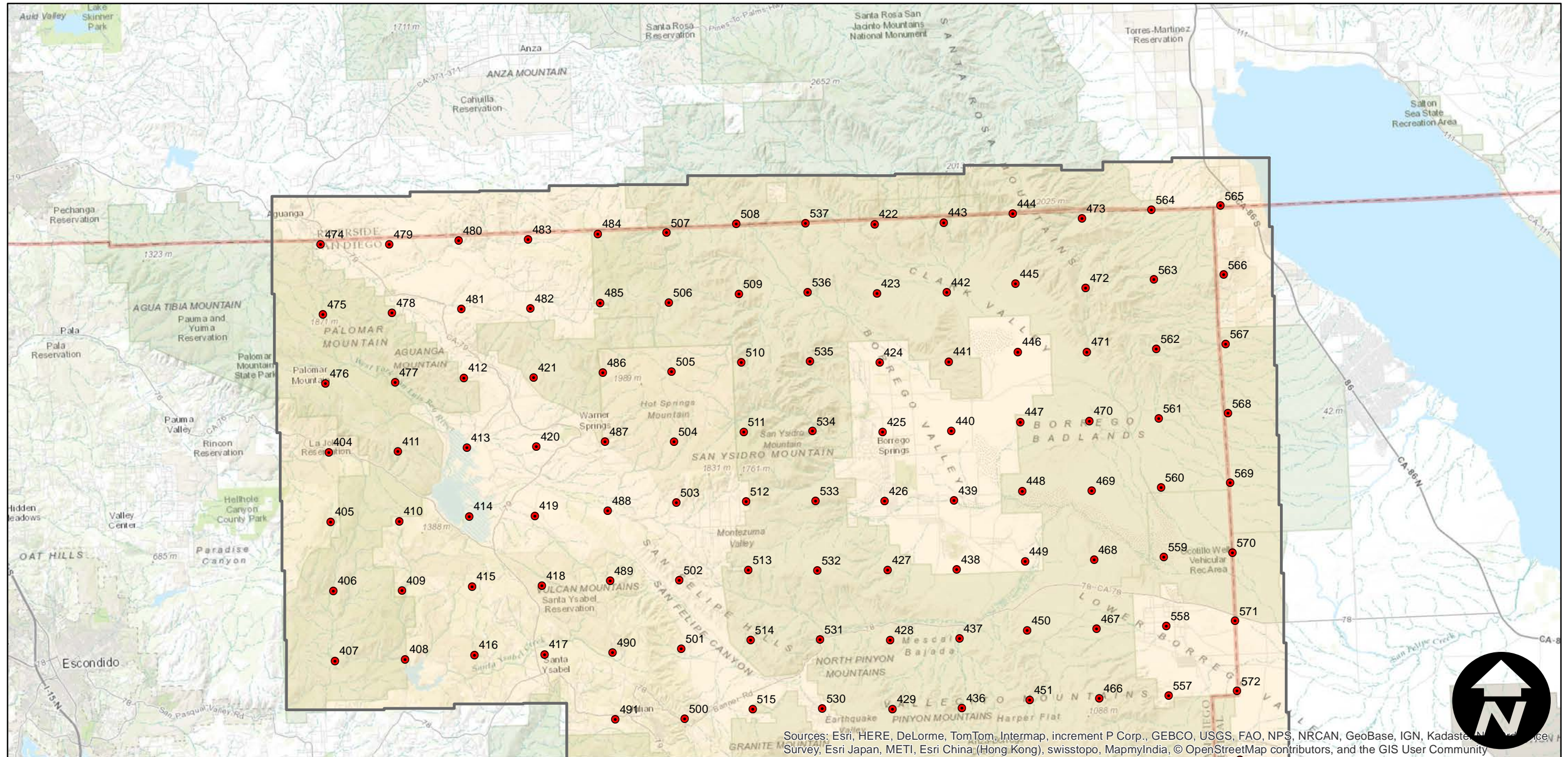
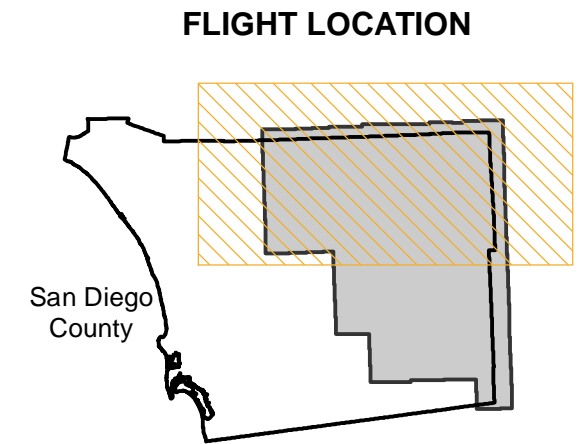


# EAG-SDE-06X

Counties: San Diego  
Flight date(s): 12-04-2006 to 12-05-2006  
Scale: 1:34,000  
Overlap: 20%

Complete Metadata:  
<http://www.library.ucsb.edu/mil/aerial-photography-tools>

Note: East San Diego County from vicinity of Aguana to Table Mountain. Areas covered include Cleveland National Forest, Borrego Desert, and Ocotillo Wells. See flight EAG-SDE-06 for additional coverage. Imagery acquired December 2013.



Sources: Esri, HERE, DeLorme, TomTom, Intermap, increment P Corp., GEBCO, USGS, FAO, NPS, NRCAN, GeoBase, IGN, Kadaster, Nippon E-View, Survey, Esri Japan, METI, Esri China (Hong Kong), swisstopo, MapmyIndia, © OpenStreetMap contributors, and the GIS User Community

0 5 10 20 Miles

Index to Aerial Photography  
Page 1 of 2

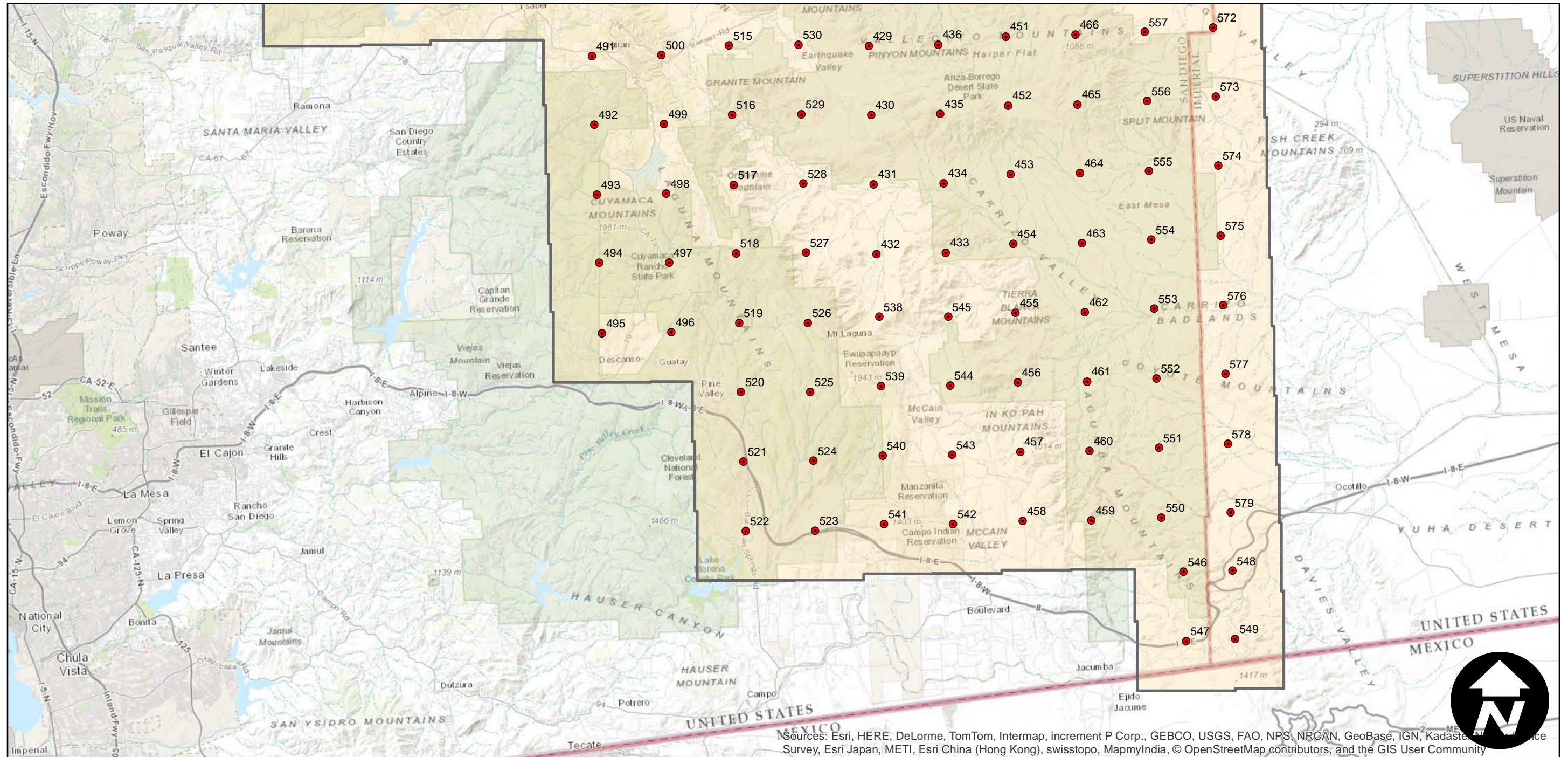
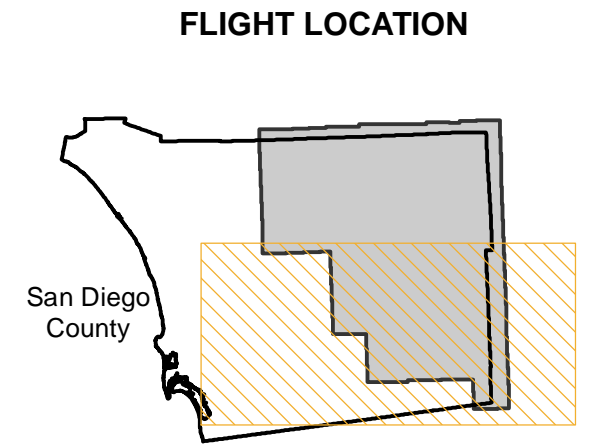
Scale of this index: 1:325,000

# EAG-SDE-06X

Counties: San Diego  
Flight date(s): 12-04-2006 to 12-05-2006  
Scale: 1:34,000  
Overlap: 20%

Complete Metadata:  
<http://www.library.ucsb.edu/mil/aerial-photography-tools>

Note: East San Diego County from vicinity of Aguana to Table Mountain. Areas covered include Cleveland National Forest, Borrego Desert, and Ocotillo Wells. See flight EAG-SDE-06 for additional coverage. Imagery acquired December 2013.



Sources: Esri, HERE, DeLorme, TomTom, Intermap, increment P Corp., GEBCO, USGS, FAO, NPS, NRCAN, GeoBase, IGN, Kadaster, N, and others. Survey, Esri Japan, METI, Esri China (Hong Kong), swisstopo, MapmyIndia, © OpenStreetMap contributors, and the GIS User Community

0 5 10 20 Miles

Index to Aerial Photography  
Page 2 of 2

Scale of this index: 1:325,000