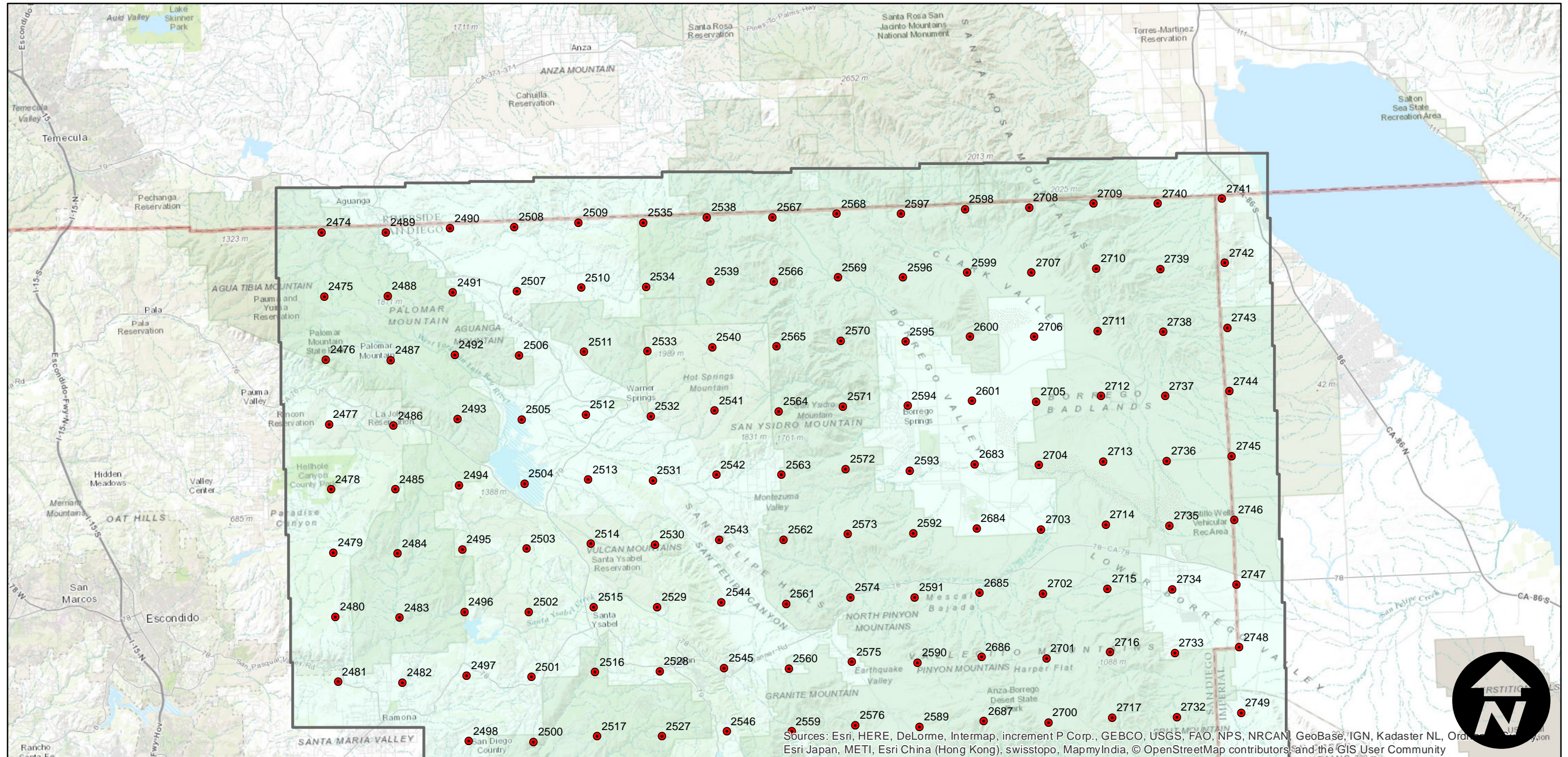
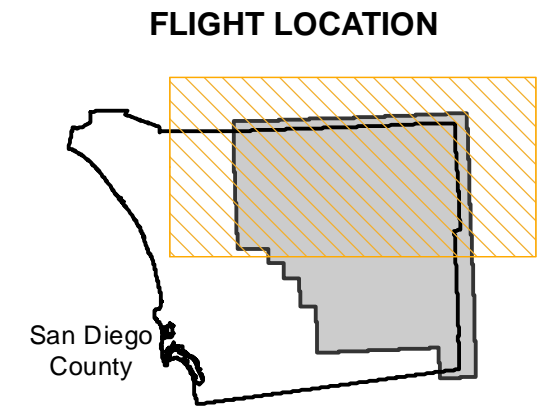


# EAG-SDE-06

Counties: San Diego  
Flight date(s): 01-04-2006 to 01-05-2006  
Scale: 1:34,000  
Overlap: 20%

Complete Metadata:  
<http://www.library.ucsb.edu/mil/aerial-photography-tools>

Note: East San Diego County from vicinity of Aguana to Table Mountain. Areas covered include Cleveland National Forest, Borrego Desert, and Ocotillo Wells. See flight EAG-SDE-06X for additional coverage. Imagery acquired December 2013.



Sources: Esri, HERE, DeLorme, Intermap, increment P Corp., GEBCO, USGS, FAO, NPS, NRCAN, GeoBase, IGN, Kadaster NL, Ordnance Survey, Esri Japan, METI, Esri China (Hong Kong), swisstopo, MapmyIndia, © OpenStreetMap contributors, and the GIS User Community

0 5 10 20 Miles

Index to Aerial Photography  
Page 1 of 2

Scale of this index: 1:350,000

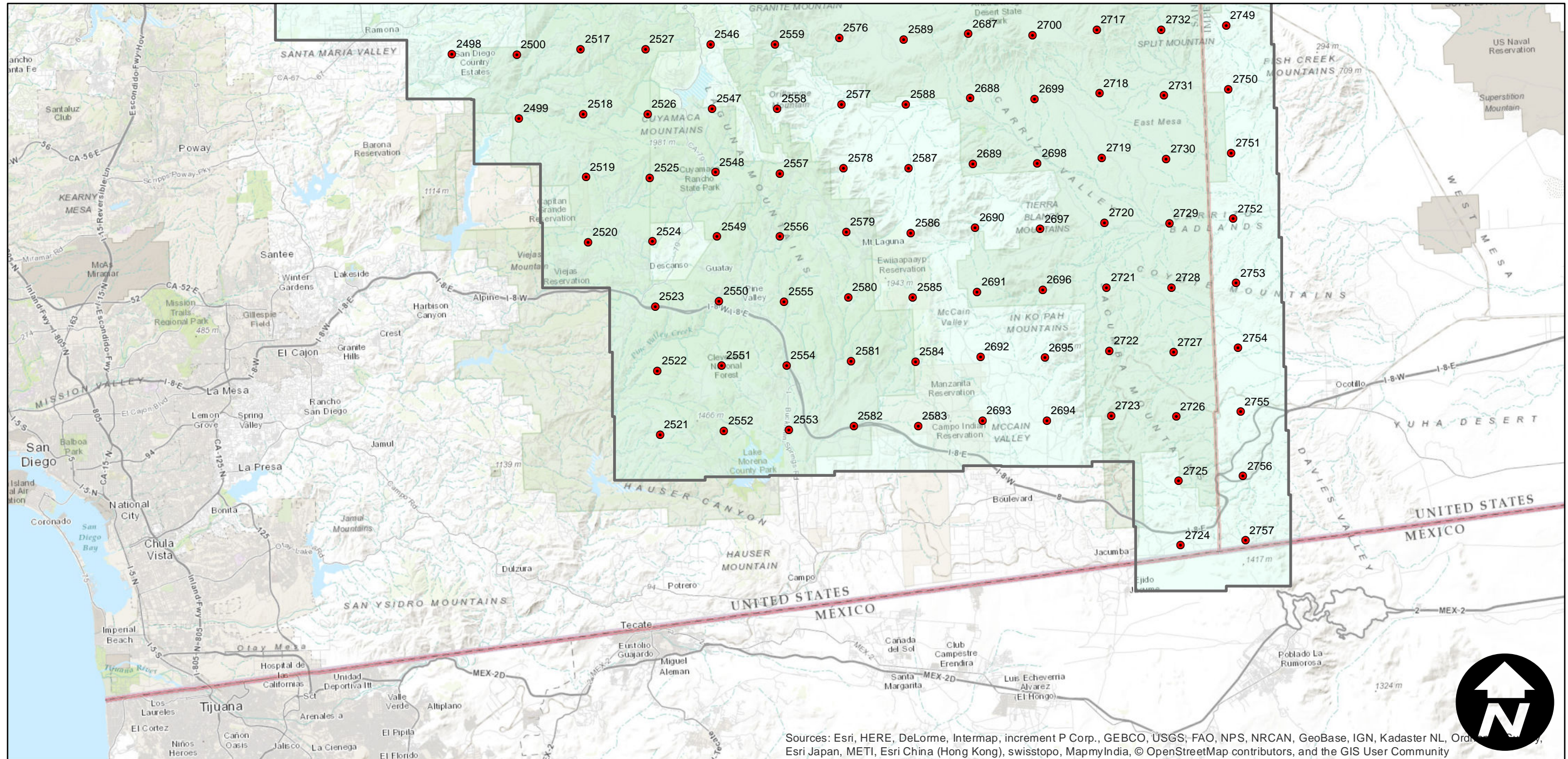
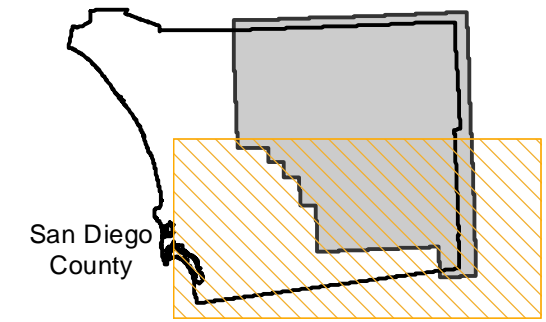
# EAG-SDE-06

Counties: San Diego  
Flight date(s): 01-04-2006 to 01-05-2006  
Scale: 1:34,000  
Overlap: 20%

Note: East San Diego County from vicinity of Aguana to Table Mountain. Areas covered include Cleveland National Forest, Borrego Desert, and Ocotillo Wells. See flight EAG-SDE-06X for additional coverage. Imagery acquired December 2013.

Complete Metadata:  
<http://www.library.ucsb.edu/mil/aerial-photography-tools>

## FLIGHT LOCATION



Sources: Esri, HERE, DeLorme, Intermap, increment P Corp., GEBCO, USGS, FAO, NPS, NRCAN, GeoBase, IGN, Kadaster NL, Ordnance Survey, Esri Japan, METI, Esri China (Hong Kong), swisstopo, MapmyIndia, © OpenStreetMap contributors, and the GIS User Community

