

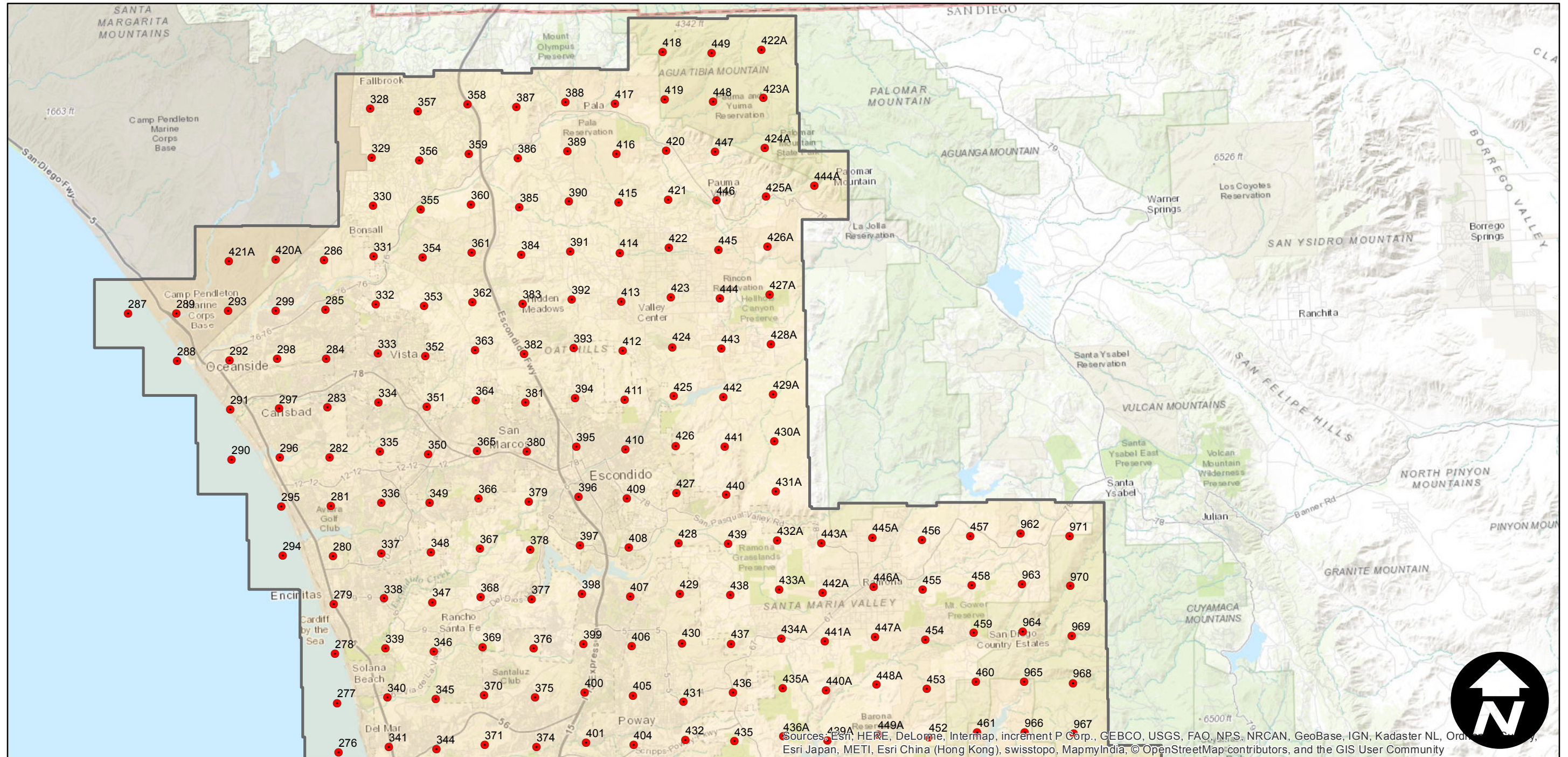
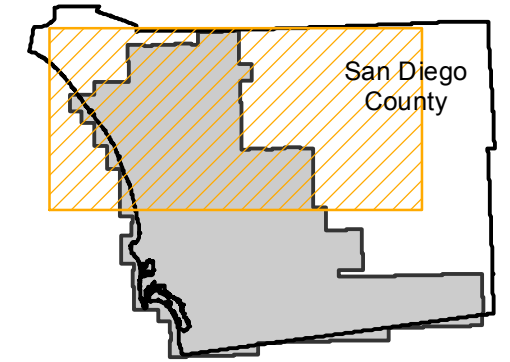
EAG-SD-05

Counties: San Diego
Flight date(s): 10-10-2005 to 11-15-2005
Scale: 1:22,000
Overlap: 30%

Note: Fallbrook to Jacumba. Areas covered include Oceanside, Escondido, San Diego, Chula Vista, and Lake Morena. Imagery acquired December 2013.

Complete Metadata:
<http://www.library.ucsb.edu/mil/aerial-photography-tools>

FLIGHT LOCATION



Sources: Esri, HERE, DeLorme, Intermap, increment P Corp., GEBCO, USGS, FAO, NPS, NRCAN, GeoBase, IGN, Kadaster NL, Ordnance Survey, Esri Japan, METI, Esri China (Hong Kong), swisstopo, MapmyIndia, © OpenStreetMap contributors, and the GIS User Community

0 5 10 20 Miles

Scale of this index: 1:300,000

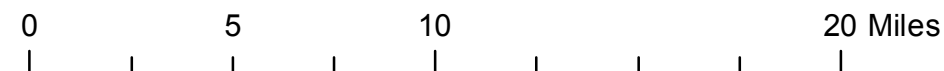
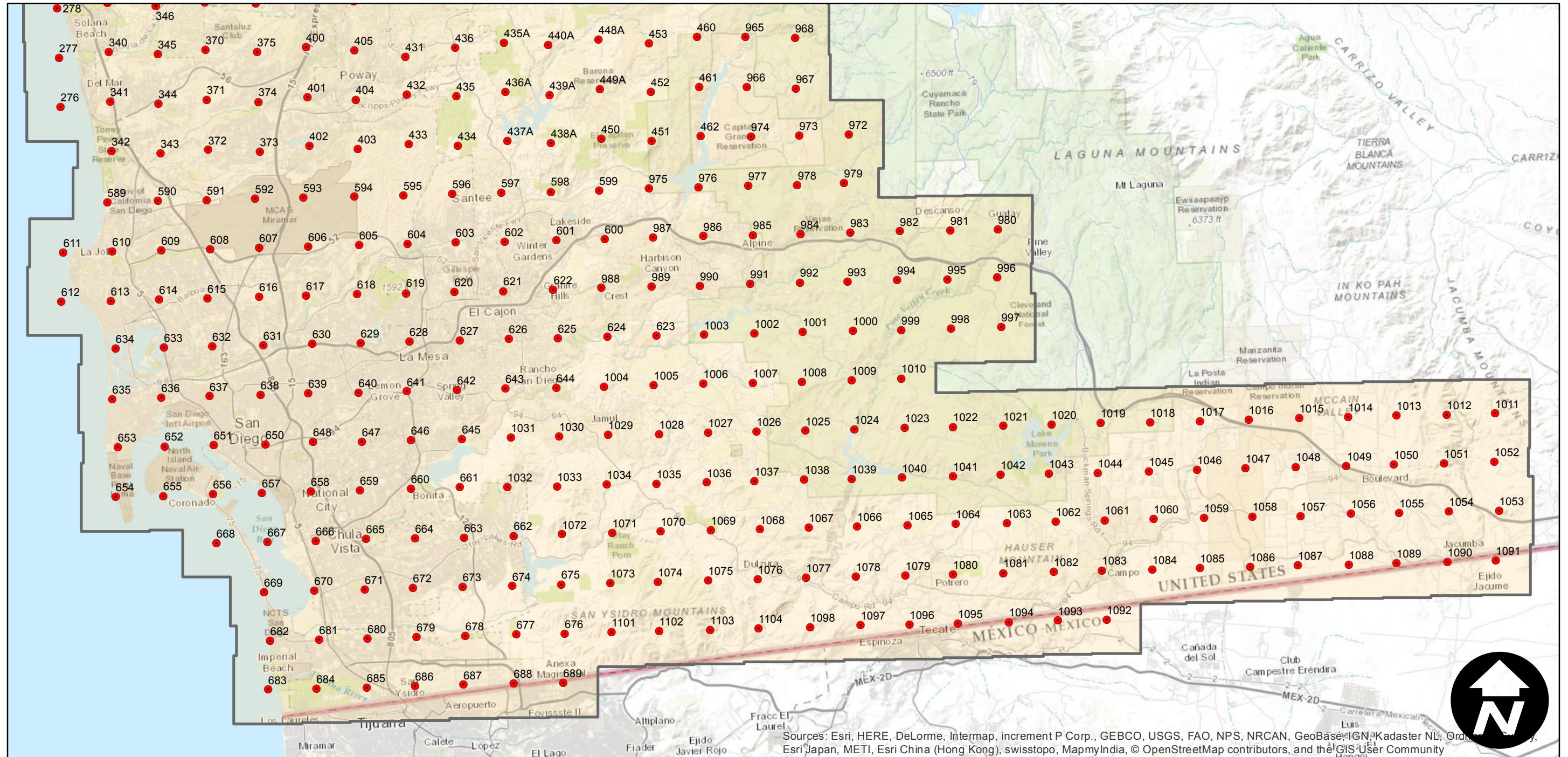
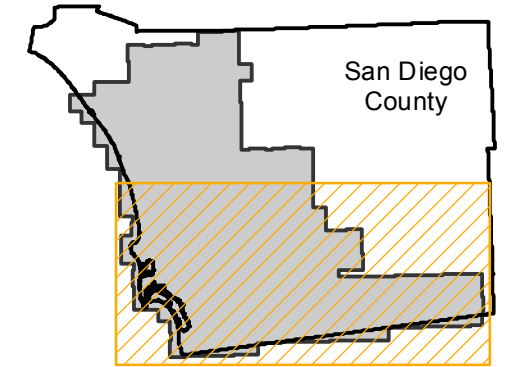
EAG-SD-05

Counties: San Diego
Flight date(s): 10-10-2005 to 11-15-2005
Scale: 1:22,000
Overlap: 30%

Complete Metadata:
<http://www.library.ucsb.edu/mil/aerial-photography-tools>

Note: Fallbrook to Jacumba. Areas covered include Oceanside, Escondido, San Diego, Chula Vista, and Lake Morena. Imagery acquired December 2013.

FLIGHT LOCATION



Sources: Esri, HERE, DeLorme, Intermap, increment P Corp., GEBCO, USGS, FAO, NPS, NRCAN, GeoBase, IGN, Kadaster NL, Ordnance Survey, Esri Japan, METI, Esri China (Hong Kong), swisstopo, MapmyIndia, © OpenStreetMap contributors, and the GIS User Community