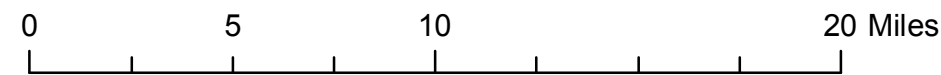
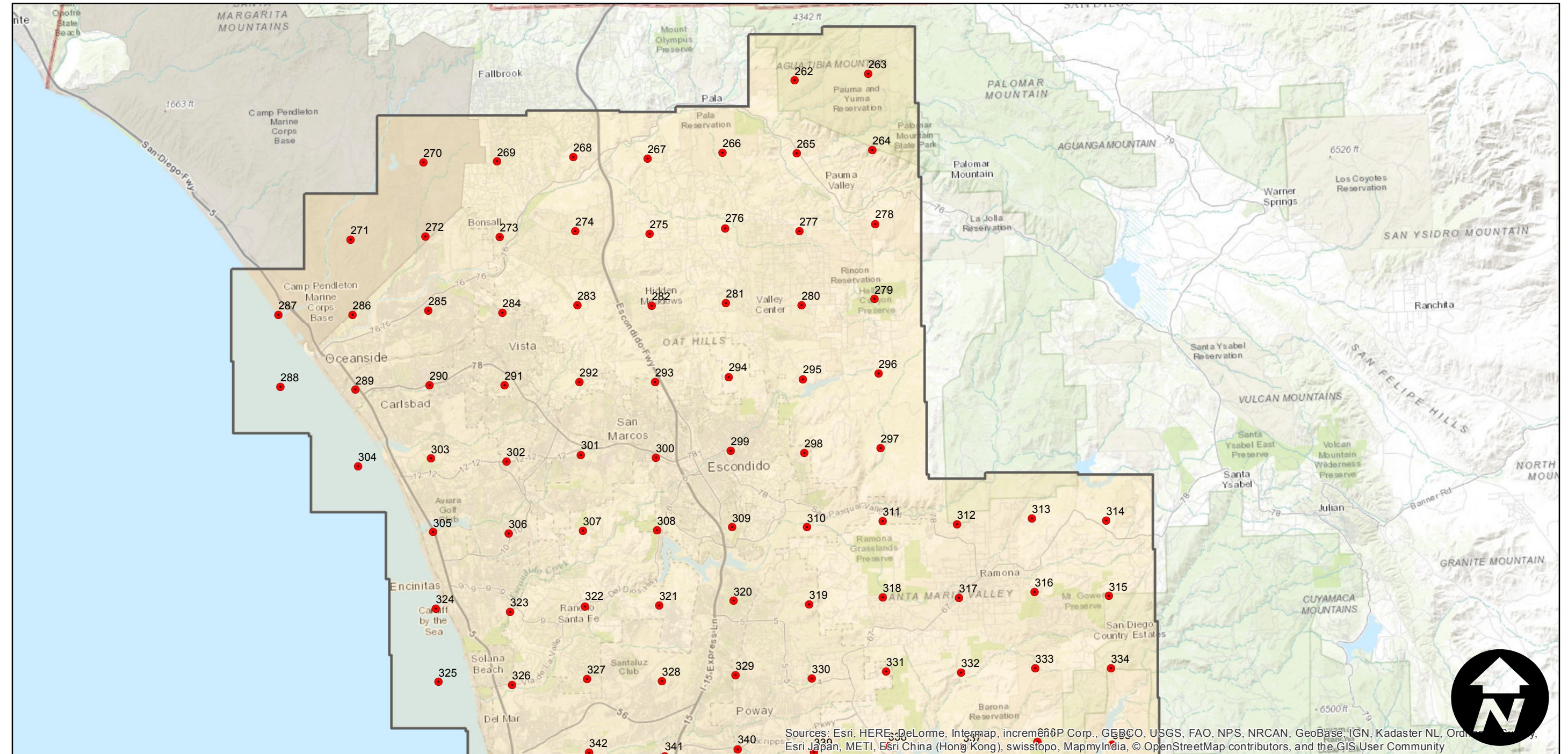
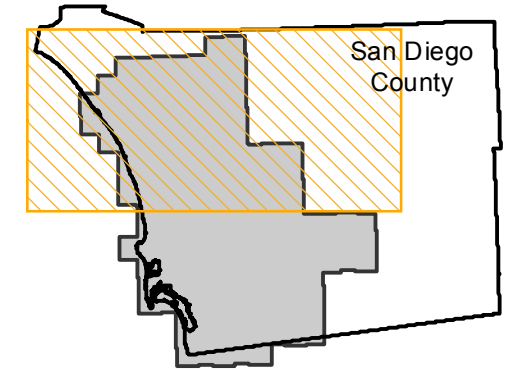


EAG-SD-03

Counties: San Diego
Flight date(s): 09-05-2003 to 10-21-2003
Scale: 1:30,000
Overlap: 20%

Note: West San Diego County from area east of Rainbow to US/Mexico border. Imagery acquired December 2013.

FLIGHT LOCATION



Sources: Esri, HERE, DeLorme, Intermap, increment P Corp., GEBCO, USGS, FAO, NPS, NRCAN, GeoBase, IGN, Kadaster NL, Ordnance Survey, Esri Japan, METI, Esri China (Hong Kong), swisstopo, MapmyIndia, © OpenStreetMap contributors, and the GIS User Community

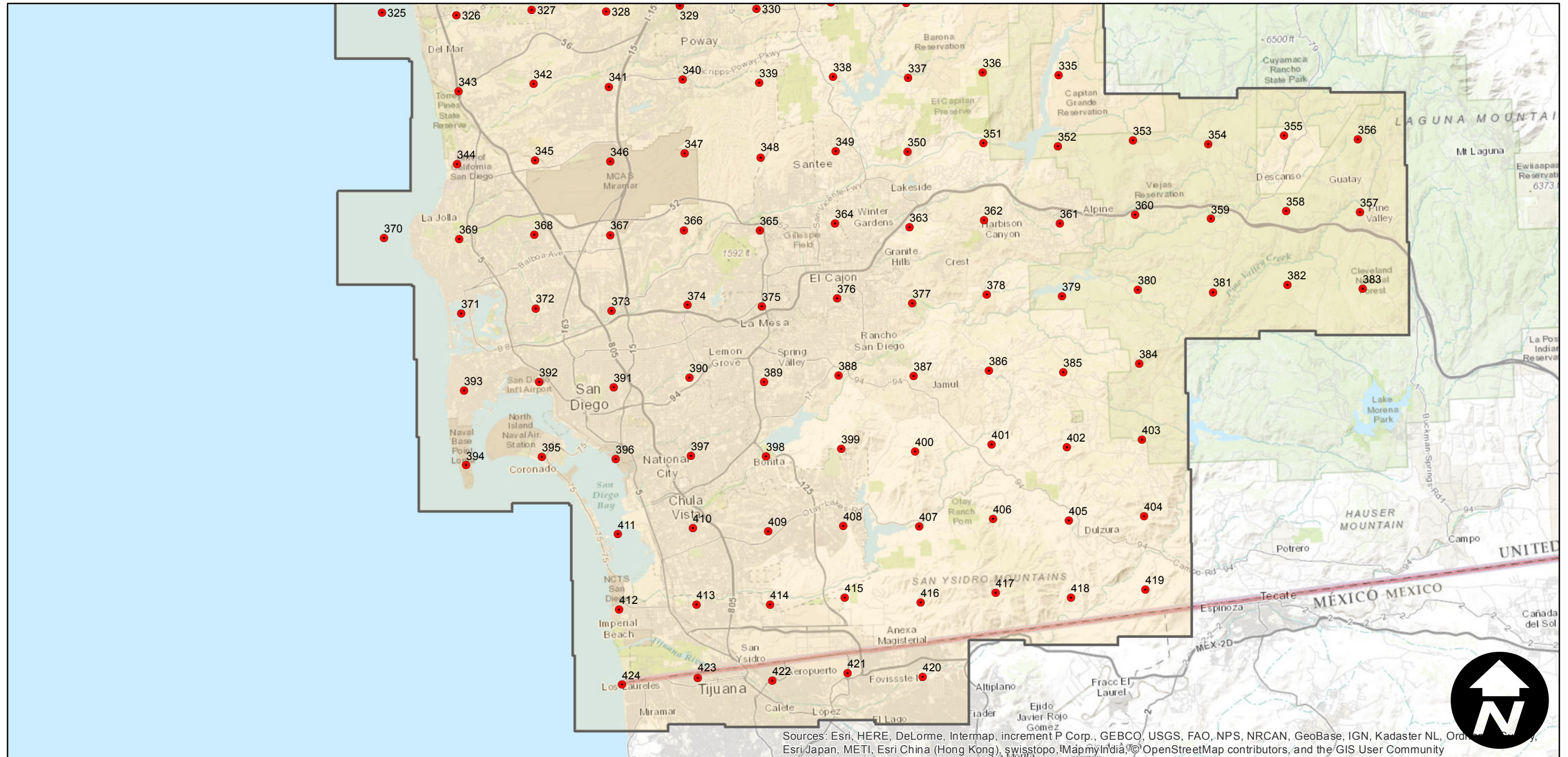
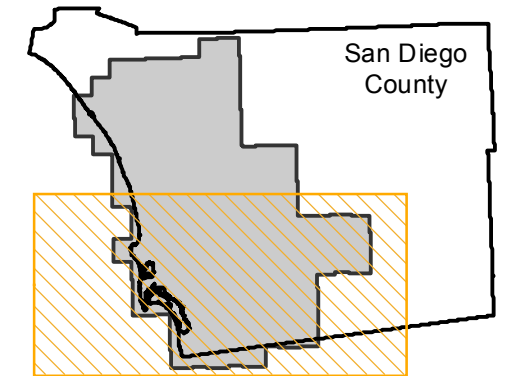
EAG-SD-03

Counties: San Diego
Flight date(s): 09-05-2003 to 10-21-2003
Scale: 1:30,000
Overlap: 20%

Complete Metadata:
<http://www.library.ucsb.edu/mil/aerial-photography-tools>

Note: West San Diego County from area east of Rainbow to US/Mexico border. Imagery acquired December 2013.

FLIGHT LOCATION



Sources: Esri, HERE, DeLorme, Intermap, increment P Corp., GEBCO, USGS, FAO, NPS, NRCAN, GeoBase, IGN, Kadaster NL, Ordnance Survey, Esri Japan, METI, Esri China (Hong Kong), swisstopo, MapmyIndia, © OpenStreetMap contributors, and the GIS User Community

0 5 10 20 Miles

Scale of this index: 1:300,000