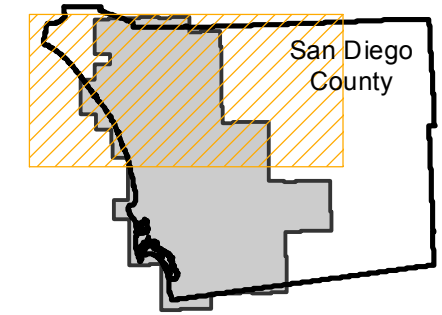


EAG-SD-02

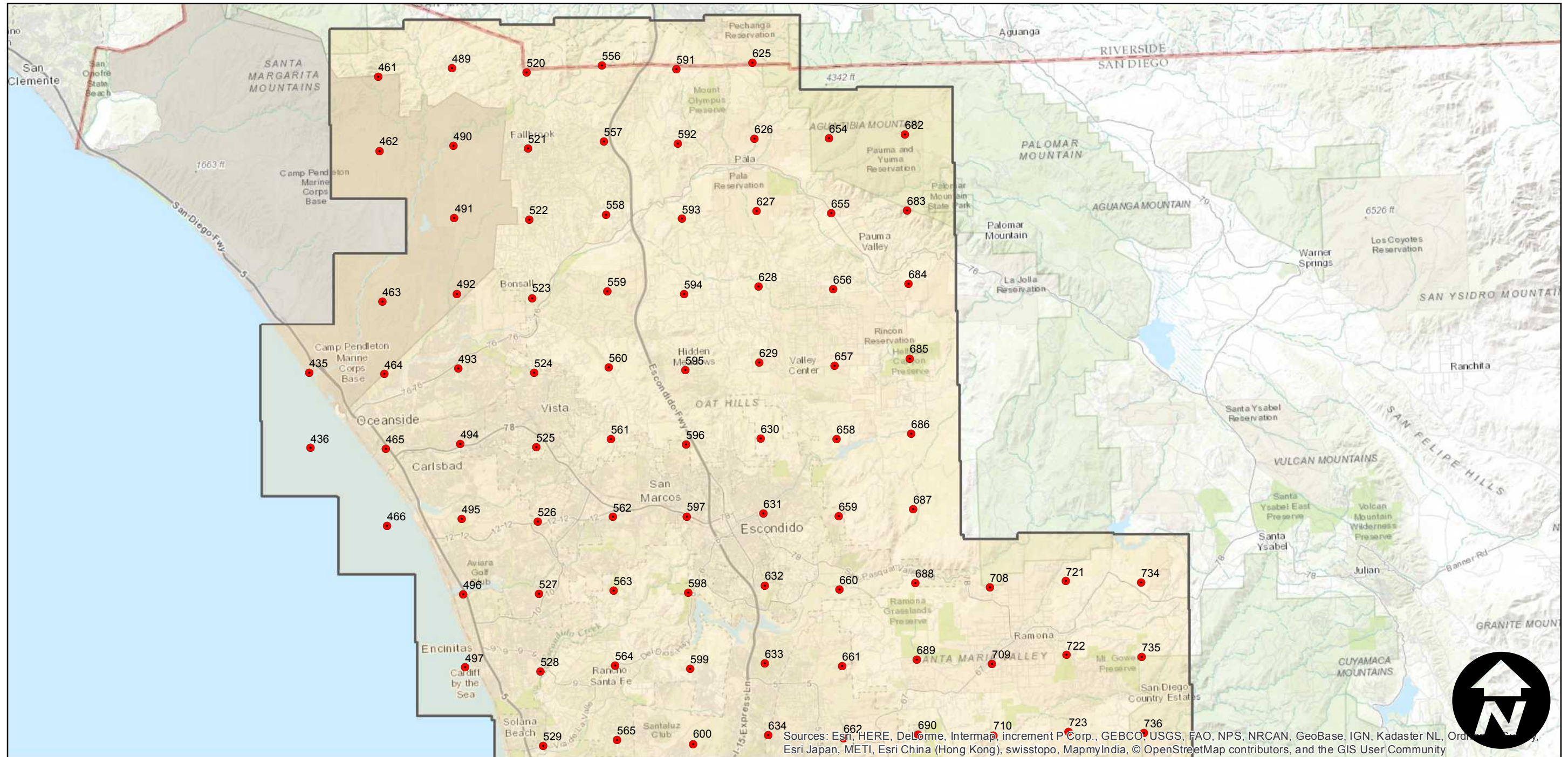
Counties: San Diego
Flight date(s): 03-20-2002 to 04-29-2002
Scale: 1:31,000
Overlap: 20%

Note: Fallbrook to Chula Vista. Coverage extends as far east as Pine Valley. Frames located east of El Cajon photographed on 4-29-2002. Imagery acquired December 2013.

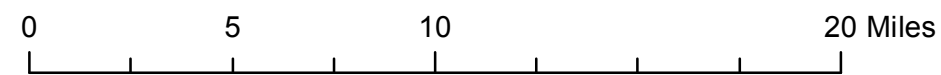
FLIGHT LOCATION



Complete Metadata:
<http://www.library.ucsb.edu/mil/aerial-photography-tools>



Sources: Esri, HERE, DeLorme, Intermap, increment P Corp., GEBCO, USGS, FAO, NPS, NRCAN, GeoBase, IGN, Kadaster NL, Ordnance Survey, Esri Japan, METI, Esri China (Hong Kong), swisstopo, MapmyIndia, © OpenStreetMap contributors, and the GIS User Community



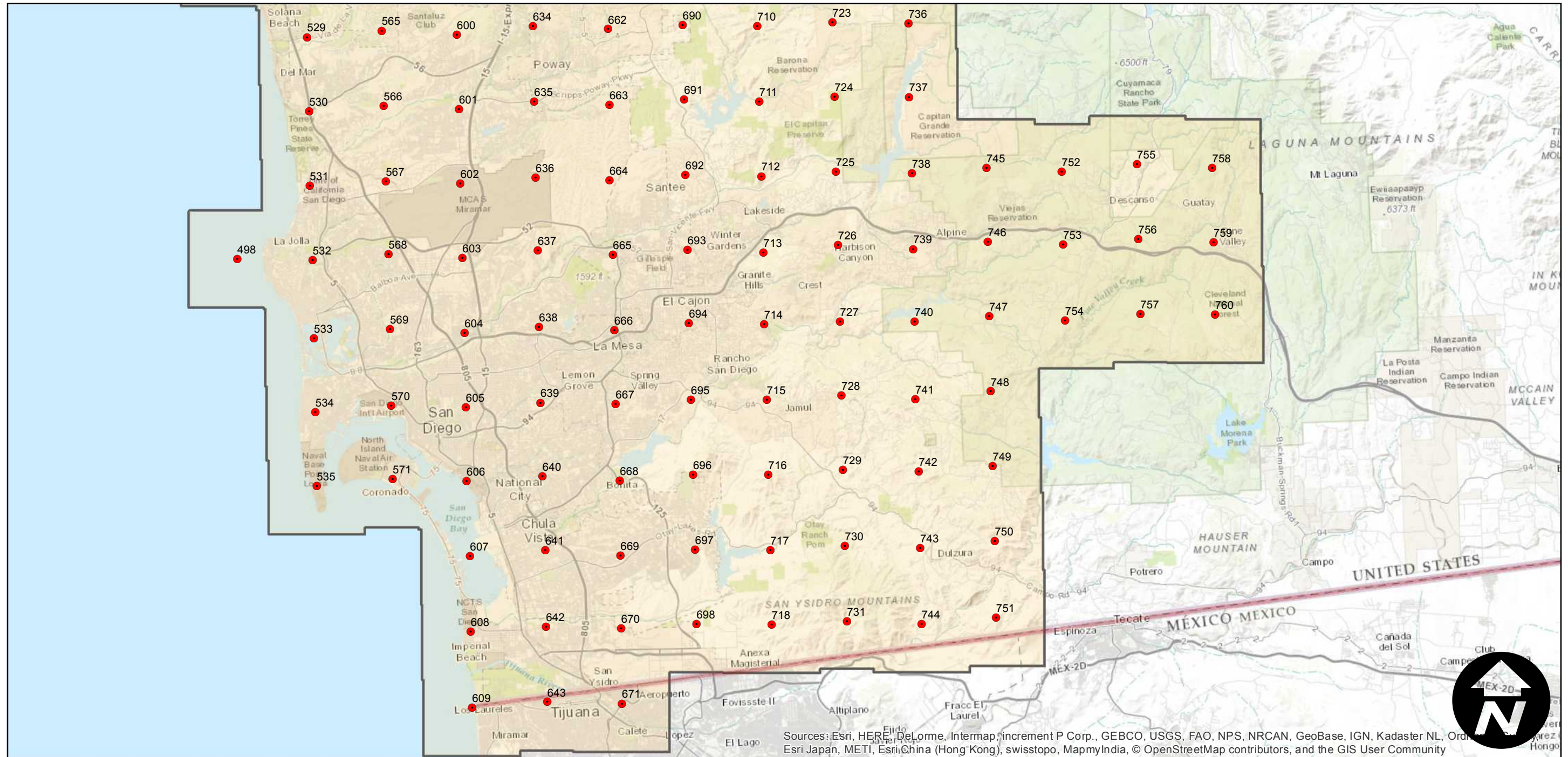
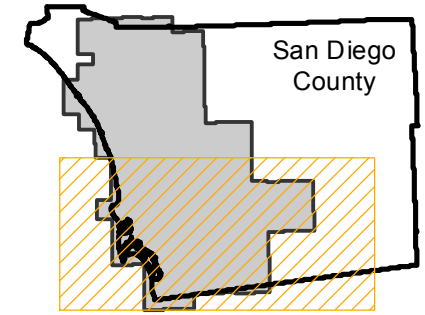
EAG-SD-02

Counties: San Diego
Flight date(s): 03-20-2002 to 04-29-2002
Scale: 1:31,000
Overlap: 20%

Complete Metadata:
<http://www.library.ucsb.edu/mil/aerial-photography-tools>

Note: Fallbrook to Chula Vista. Coverage extends as far east as Pine Valley. Frames located east of El Cajon photographed on 4-29-2002. Imagery acquired December 2013.

FLIGHT LOCATION



Sources: Esri, HERE, DeLorme, Intermap, increment P Corp., GEBCO, USGS, FAO, NPS, NRCAN, GeoBase, IGN, Kadaster NL, Ordnance Survey, Esri Japan, METI, Esri China (Hong Kong), swisstopo, MapmyIndia, © OpenStreetMap contributors, and the GIS User Community

0 5 10 20 Miles

Index to Aerial Photography
Page 2 of 2

Scale of this index: 1:300,000