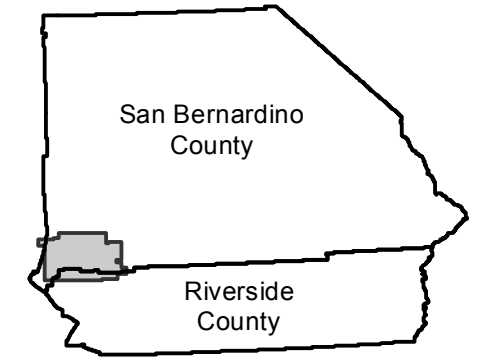


# EAG-SB-07

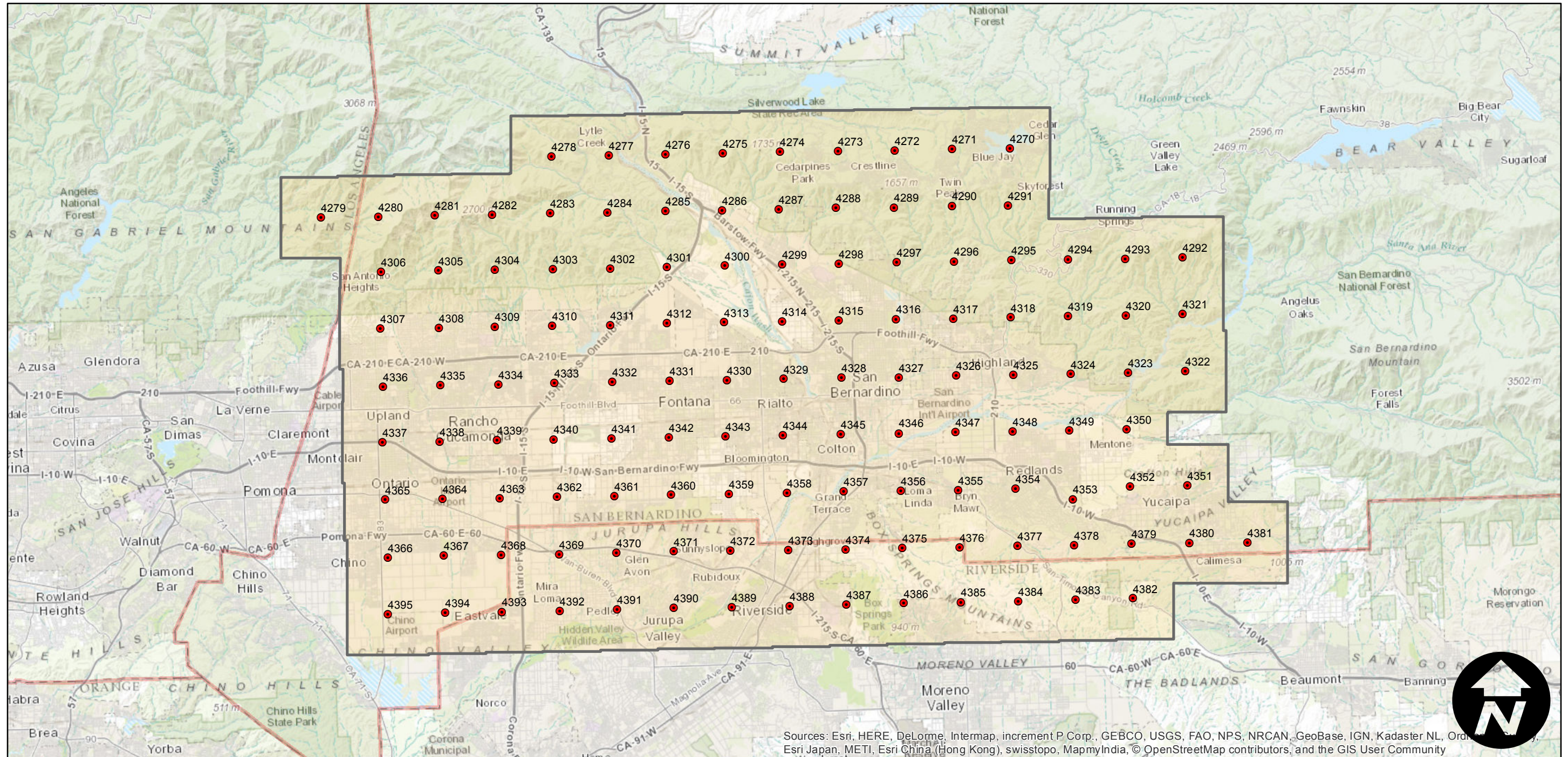
Counties: San Bernardino, Riverside  
Flight date(s): 04-19-2007  
Scale: 1:24,000  
Overlap: 30%

Note: Southwest San Bernardino County; Ontario to Yucaipa, Riverside to Lake Arrowhead. Coverage extends into Riverside County. Imagery acquired December 2013.

## FLIGHT LOCATION



Complete Metadata:  
<http://www.library.ucsb.edu/mil/aerial-photography-tools>



Sources: Esri, HERE, DeLorme, Intermap, increment P Corp., GEBCO, USGS, FAO, NPS, NRCAN, GeoBase, IGN, Kadaster NL, Ordnance Survey, Esri Japan, METI, Esri China (Hong Kong), swisstopo, MapmyIndia, © OpenStreetMap contributors, and the GIS User Community

