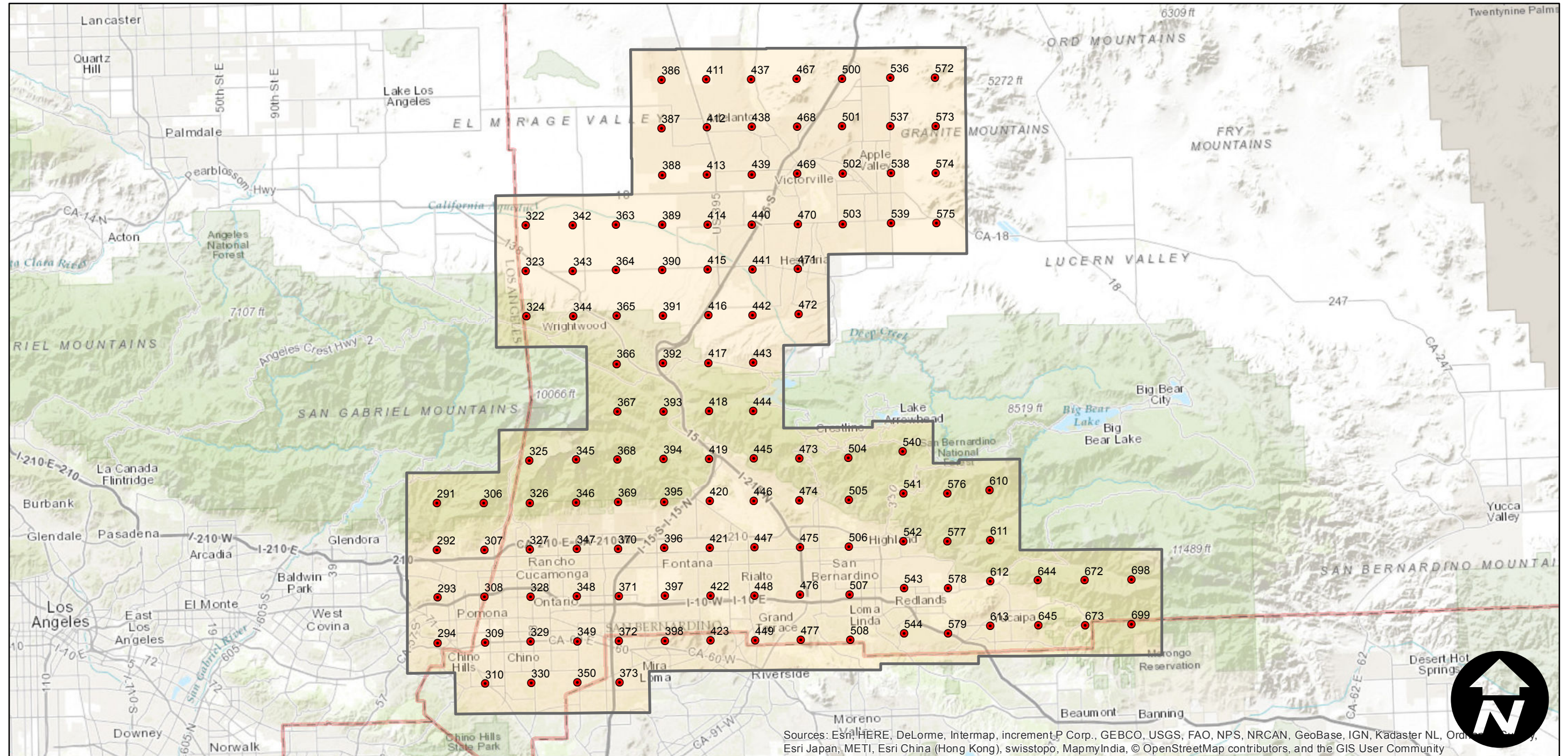
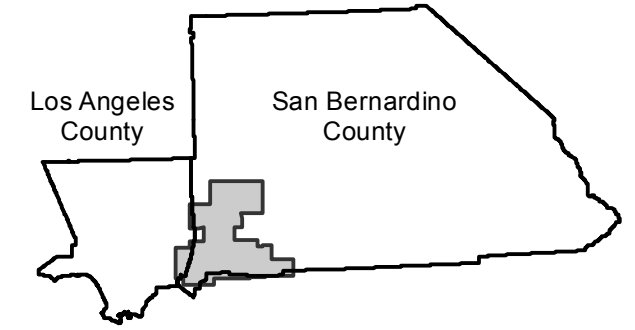


EAG-SB-02

Counties: San Bernardino, Los Angeles
Flight date(s): 06-13-2002 to 06-25-2002
Scale: 1:31,000
Overlap: 20%

Note: Southwest San Bernardino County. Pomona to Oak Glen; Grand Terrace to Adelanto. Coverage extends into Los Angeles County. Imagery acquired December 2013.

FLIGHT LOCATION



Sources: Esri, HERE, DeLorme, Intermap, increment P Corp., GEBCO, USGS, FAO, NPS, NRCAN, GeoBase, IGN, Kadaster NL, Ordnance Survey, Esri Japan, METI, Esri China (Hong Kong), swisstopo, MapmyIndia, © OpenStreetMap contributors, and the GIS User Community

0 5 10 20 Miles