

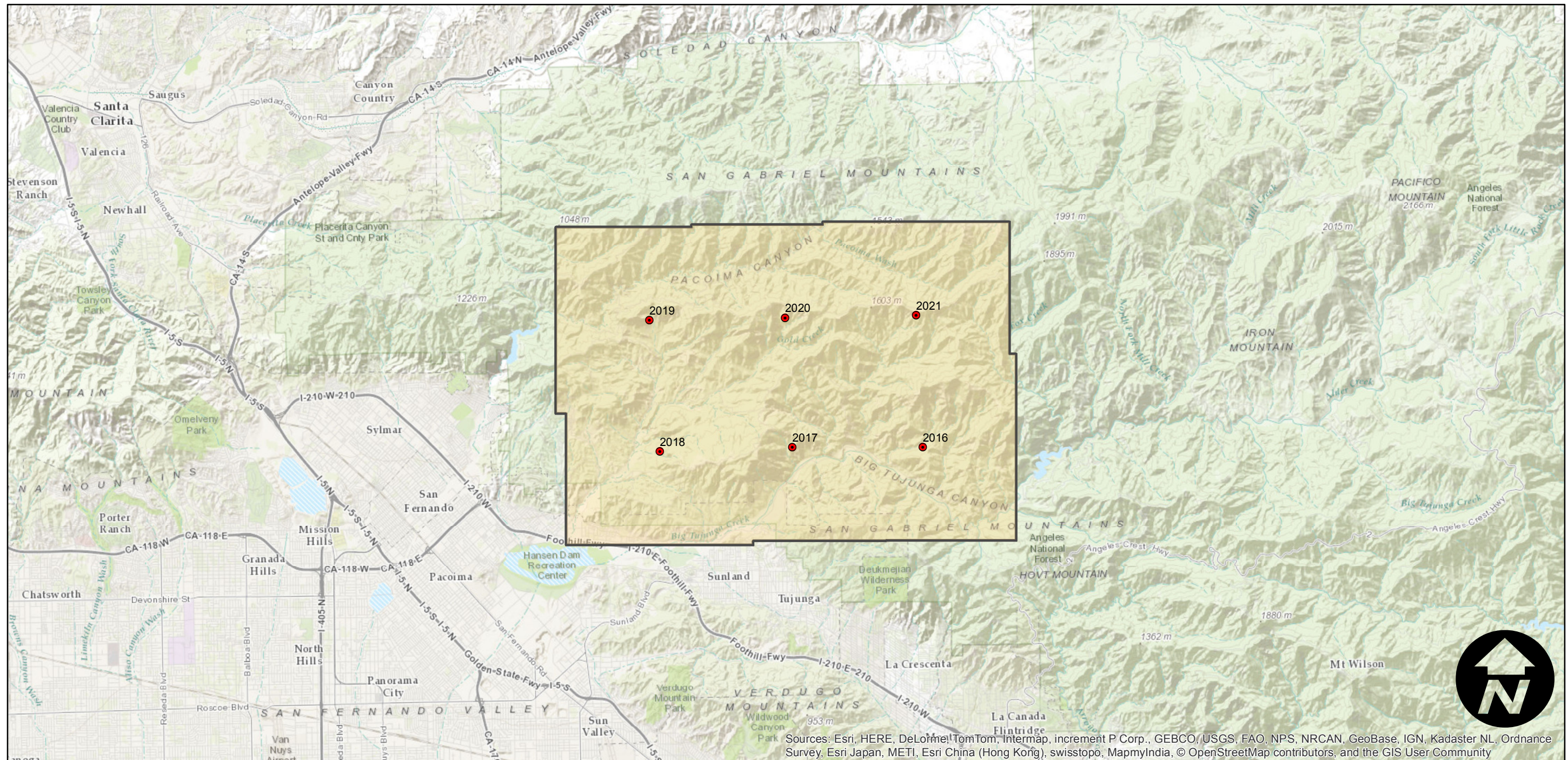
EAG-LA-Fire

Counties: Los Angeles
Flight date(s): 12-03-2002
Scale: 1:30,000
Overlap: 20%

Complete Metadata:
<http://www.library.ucsb.edu/mil/aerial-photography-tools>

Note: Angeles National Forest: area north of Kagel Canyon and Hansen Dam. Possibly photography of "Copper Fire" area? Imagery acquired December 2013.

FLIGHT LOCATION



Sources: Esri, HERE, DeLorme, TomTom, Intermap, increment P Corp., GEBCO, USGS, FAO, NPS, NRCAN, GeoBase, IGN, Kadaster NL, Ordnance Survey, Esri Japan, METI, Esri China (Hong Kong), swisstopo, MapmyIndia, © OpenStreetMap contributors, and the GIS User Community