

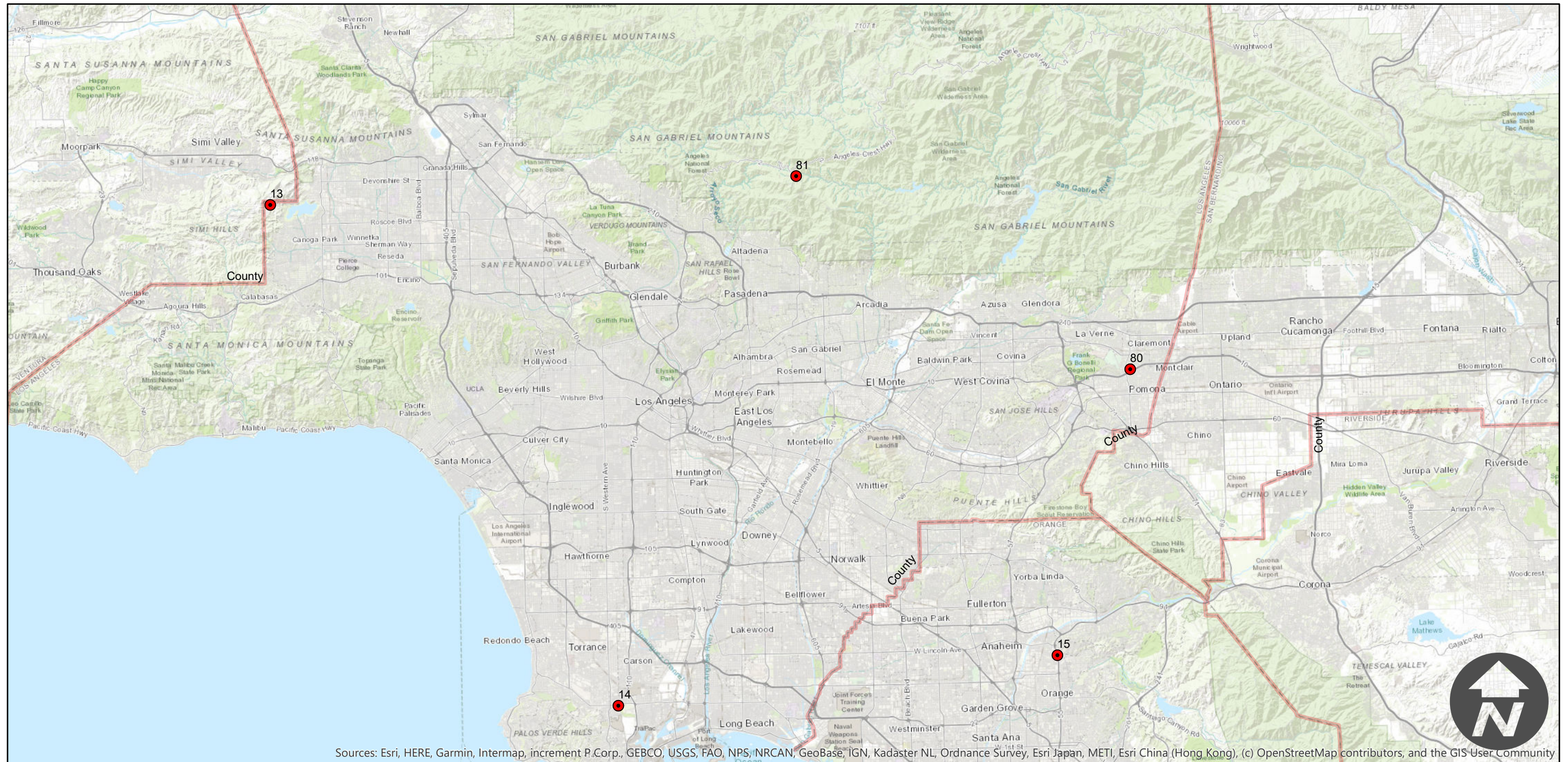
# EAG-CV-11

Counties: Los Angeles, Orange, and San Diego  
Flight date(s): 02-01-2011 to 12-21-2011  
Scale: Varies  
Overlap: 60%

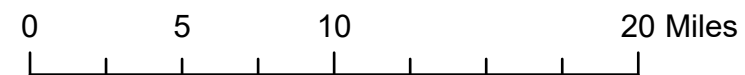
Note: Imagery from a variety of locations across three Southern California Counties. Imagery clusters on Santa Catalina Island, and around the 405 and the 5 highway connection near the cities of Irvine and Orange



Complete Metadata:  
<https://www.library.ucsb.edu/src/airphotos/aerial-photography-information>



Sources: Esri, HERE, Garmin, Intermap, increment P.Corp., GEBCO, USGS, FAO, NPS, NRCAN, GeoBase, IGN, Kadaster NL, Ordnance Survey, Esri Japan, METI, Esri China (Hong Kong), (c) OpenStreetMap contributors, and the GIS User Community



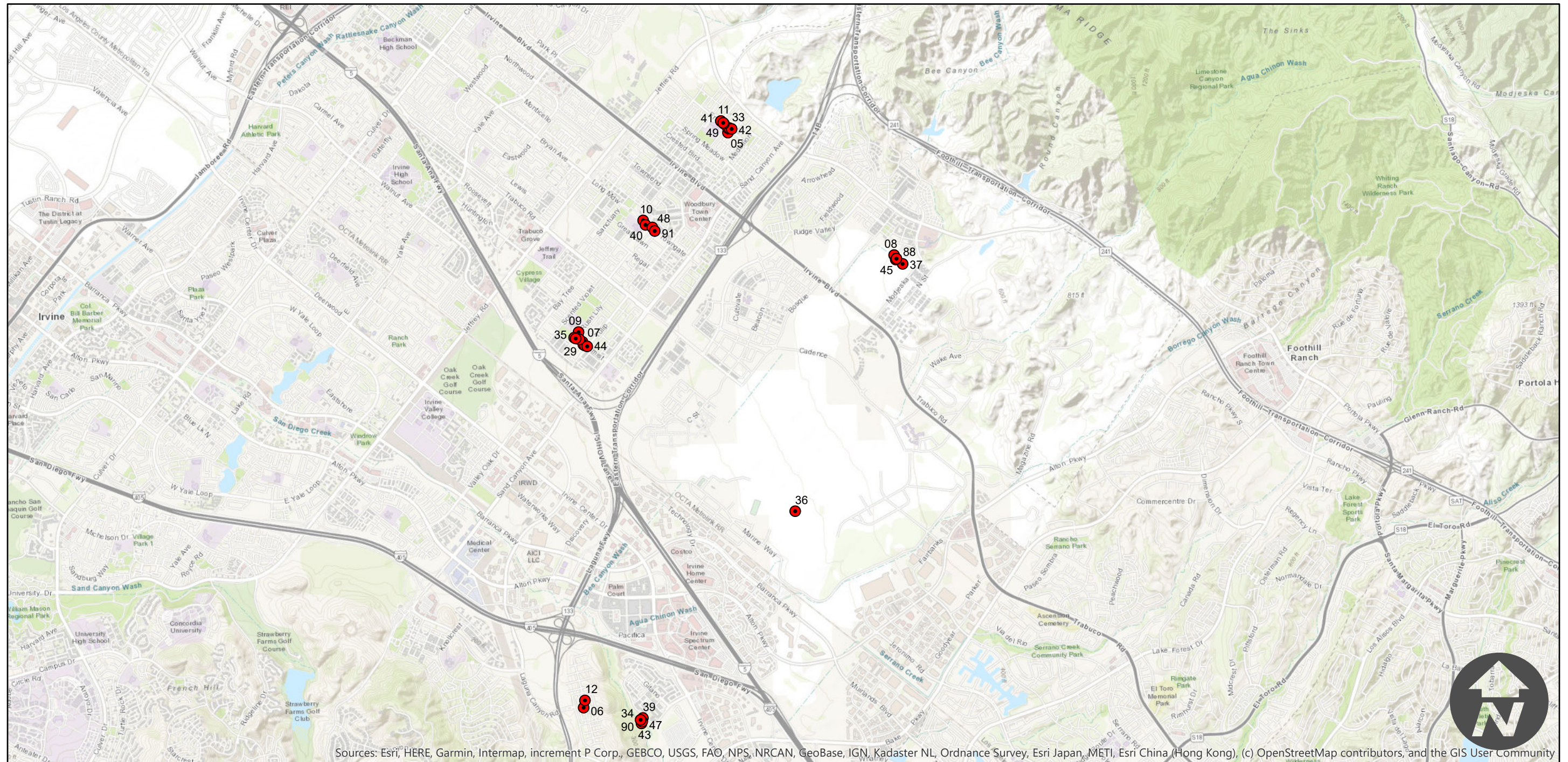
# EAG-CV-11

Counties: Los Angeles, Orange, and San Diego  
Flight date(s): 02-01-2011 to 12-21-2011  
Scale: Varies  
Overlap: 60%

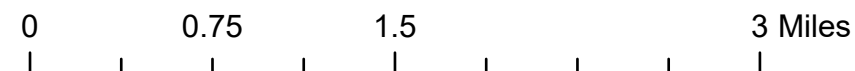
Note: Imagery from a variety of locations across three Southern California Counties. Imagery clusters on Santa Catalina Island, and around the 405 and the 5 highway connection near the cities of Irvine and Orange



Complete Metadata:  
<https://www.library.ucsb.edu/src/airphotos/aerial-photography-information>



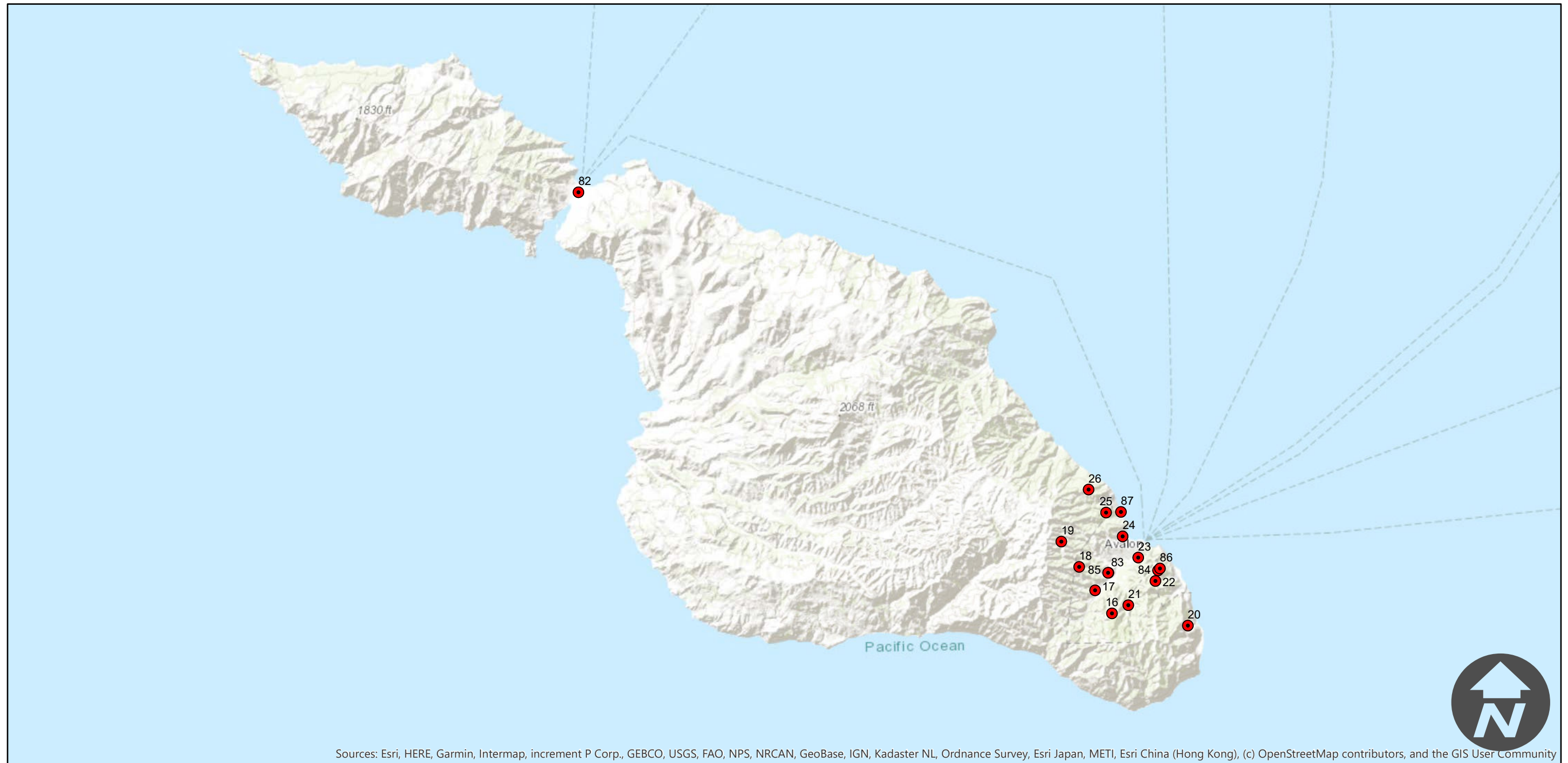
Sources: Esri, HERE, Garmin, Intermap, increment P Corp., GEBCO, USGS, FAO, NPS, NRCAN, GeoBase, IGN, Kadaster NL, Ordnance Survey, Esri Japan, METI, Esri China (Hong Kong), (c) OpenStreetMap contributors, and the GIS User Community



# EAG-CV-11

Counties: Los Angeles, Orange, and San Diego  
Flight date(s): 02-01-2011 to 12-21-2011  
Scale: Varies  
Overlap: 60%

Note: Imagery from a variety of locations across three Southern California Counties. Imagery clusters on Santa Catalina Island, and around the 405 and the 5 highway connection near the cities of Irvine and Orange



Sources: Esri, HERE, Garmin, Intermap, increment P Corp., GEBCO, USGS, FAO, NPS, NRCAN, GeoBase, IGN, Kadaster NL, Ordnance Survey, Esri Japan, METI, Esri China (Hong Kong), (c) OpenStreetMap contributors, and the GIS User Community



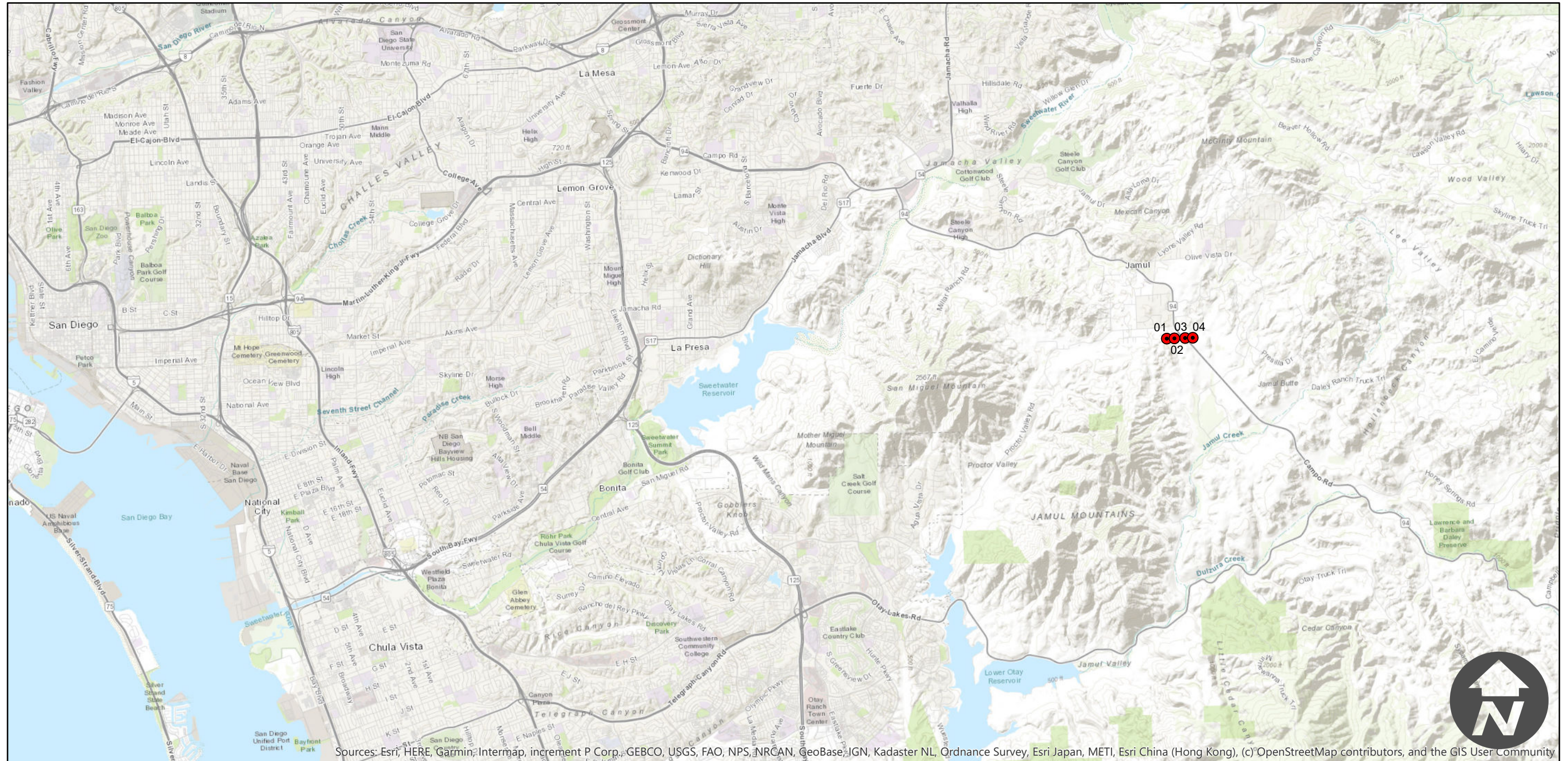
# EAG-CV-11

Counties: Los Angeles, Orange, and San Diego  
Flight date(s): 02-01-2011 to 12-21-2011  
Scale: Varies  
Overlap: 60%

Note: Imagery from a variety of locations across three Southern California Counties. Imagery clusters on Santa Catalina Island, and around the 405 and the 5 highway connection near the cities of Irvine and Orange



Complete Metadata:  
<https://www.library.ucsb.edu/src/airphotos/aerial-photography-information>



Sources: Esri, HERE, Garmin, Intermap, increment P Corp., GEBCO, USGS, FAO, NPS, NRCAN, GeoBase, IGN, Kadaster NL, Ordnance Survey, Esri Japan, METI, Esri China (Hong Kong), (c) OpenStreetMap contributors, and the GIS User Community

