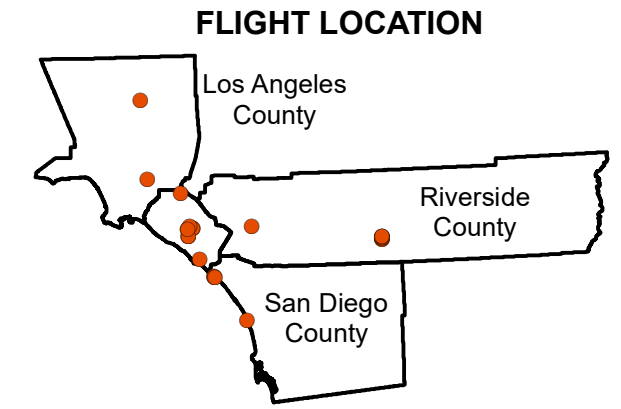


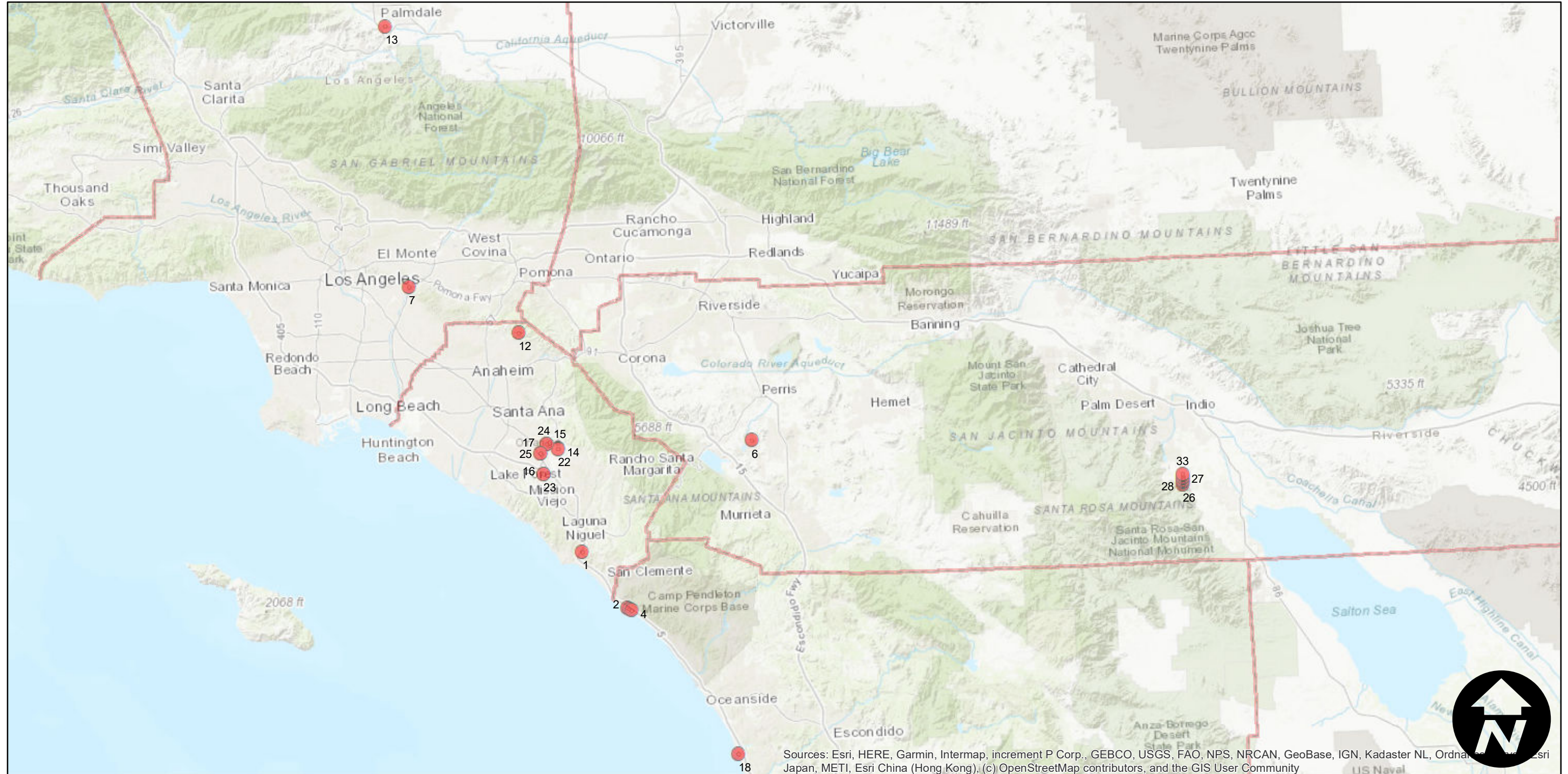
EAG-CV-10

Counties: Los Angeles, Orange, Riverside, San Diego
Flight date(s): 01-11-2010 to 12-28-2010
Scale: Varies
Overlap: 60%

Note: Imagery from a variety of locations across four Southern California Counties. Imagery clusters around San Onofre Nuclear power plant, the outskirts of Irvine, and along Monroe street on the western edge of the Torres Martinez Indian Reservation.



Complete Metadata:
<https://www.library.ucsb.edu/src/airphotos/aerial-photography-information>



Sources: Esri, HERE, Garmin, Intermap, increment P Corp., GEBCO, USGS, FAO, NPS, NRCAN, GeoBase, IGN, Kadaster NL, Ordnance Survey, Esri Japan, METI, Esri China (Hong Kong), (c) OpenStreetMap contributors, and the GIS User Community

0 12.5 25 50 Miles