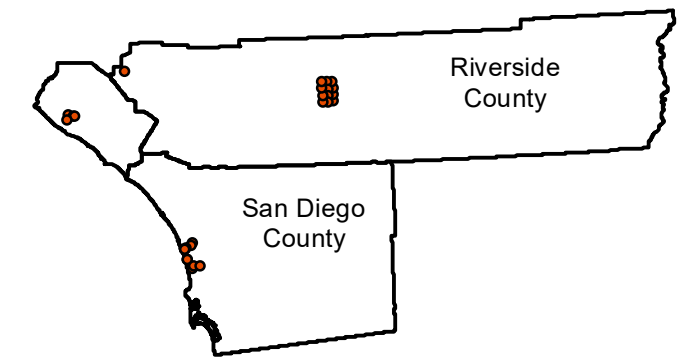


EAG-CV-08

Counties: Orange, Riverside, San Diego
Flight date(s): 03-21-2008 to 12-26-2008
Scale: Varies
Overlap: 60%

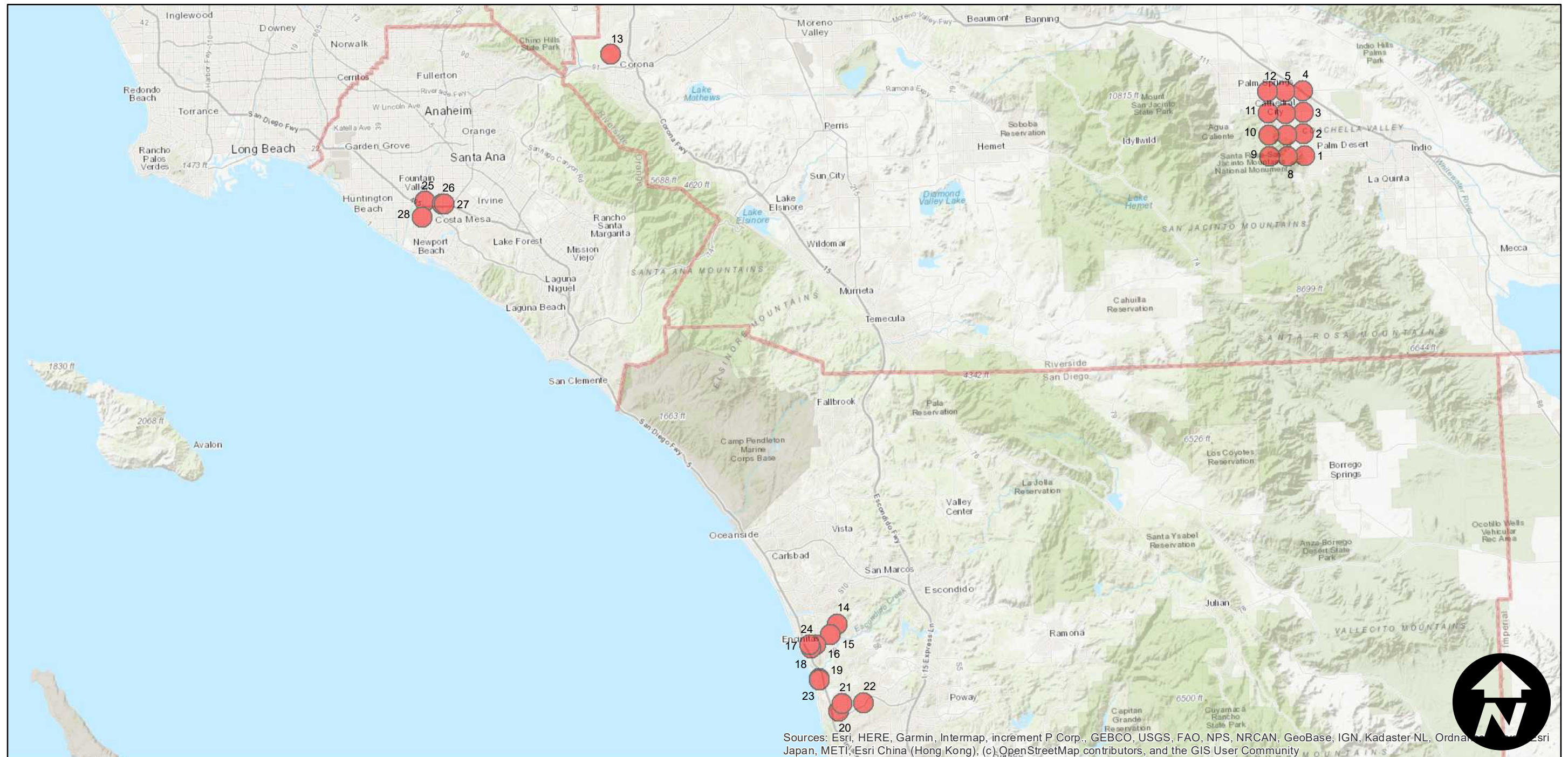
Note: frames from a variety of dates and locations across three Southern California counties with clusters near Cathedral City in Orange County, Encinitas in San Diego County, and Costa Mesa in Orange County.

FLIGHT LOCATION



Complete Metadata:

<https://www.library.ucsb.edu/src/airphotos/aerial-photography-information>



Sources: Esri, HERE, Garmin, Intermap, increment P Corp., GEBCO, USGS, FAO, NPS, NRCAN, GeoBase, IGN, Kadaster NL, Ordnance Survey, Esri Japan, METI, Esri China (Hong Kong), (c) OpenStreetMap contributors, and the GIS User Community

0 5 10 20 Miles

Scale of this index: 1:650,000