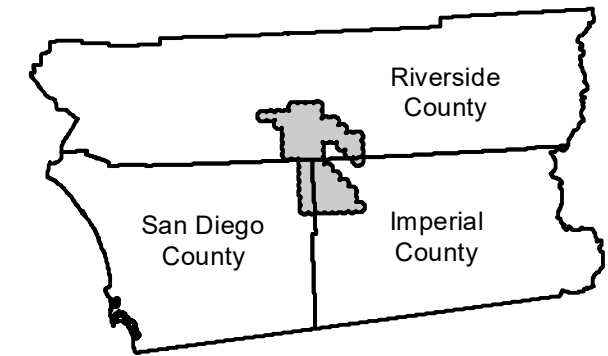


EAG-CV-06B

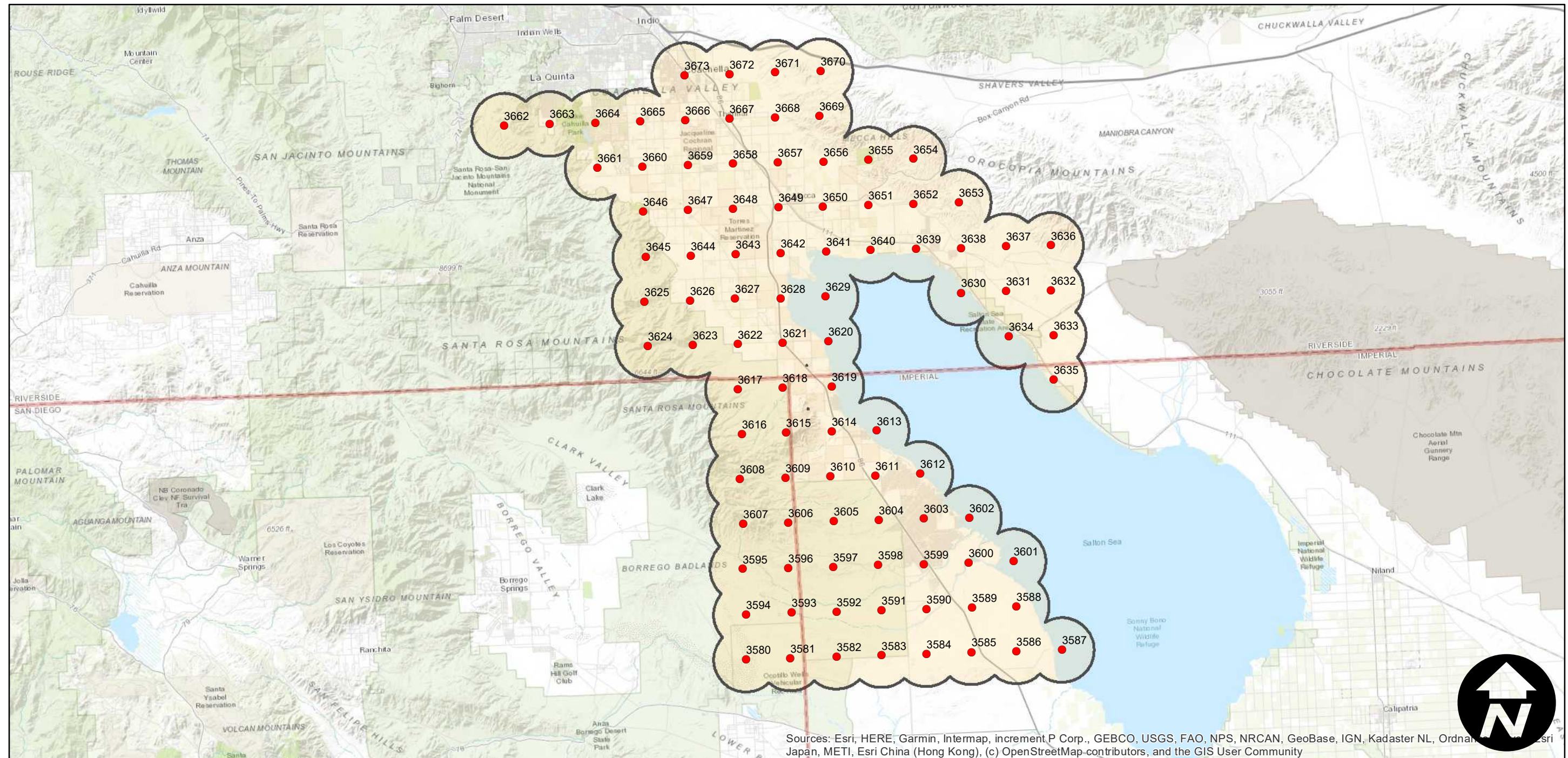
Counties: Imperial, Riverside, San Diego
Flight date(s): 08/31/2006
Scale: 1:26,000
Overlap: 60%

Note: Vicinity of the Salton Sea. Imagery generally covers the northern and western shoreline, and extends north to Coachella, south past Salton City, and west into the Santa Rosa and San Jacinto Mountains.

FLIGHT LOCATION



Complete Metadata:
<https://www.library.ucsb.edu/src/airphotos/aerial-photography-information>



0 5 10 20 Miles

Index to Aerial Photography
Page 1 of 1

Scale of this index: 1:375,000