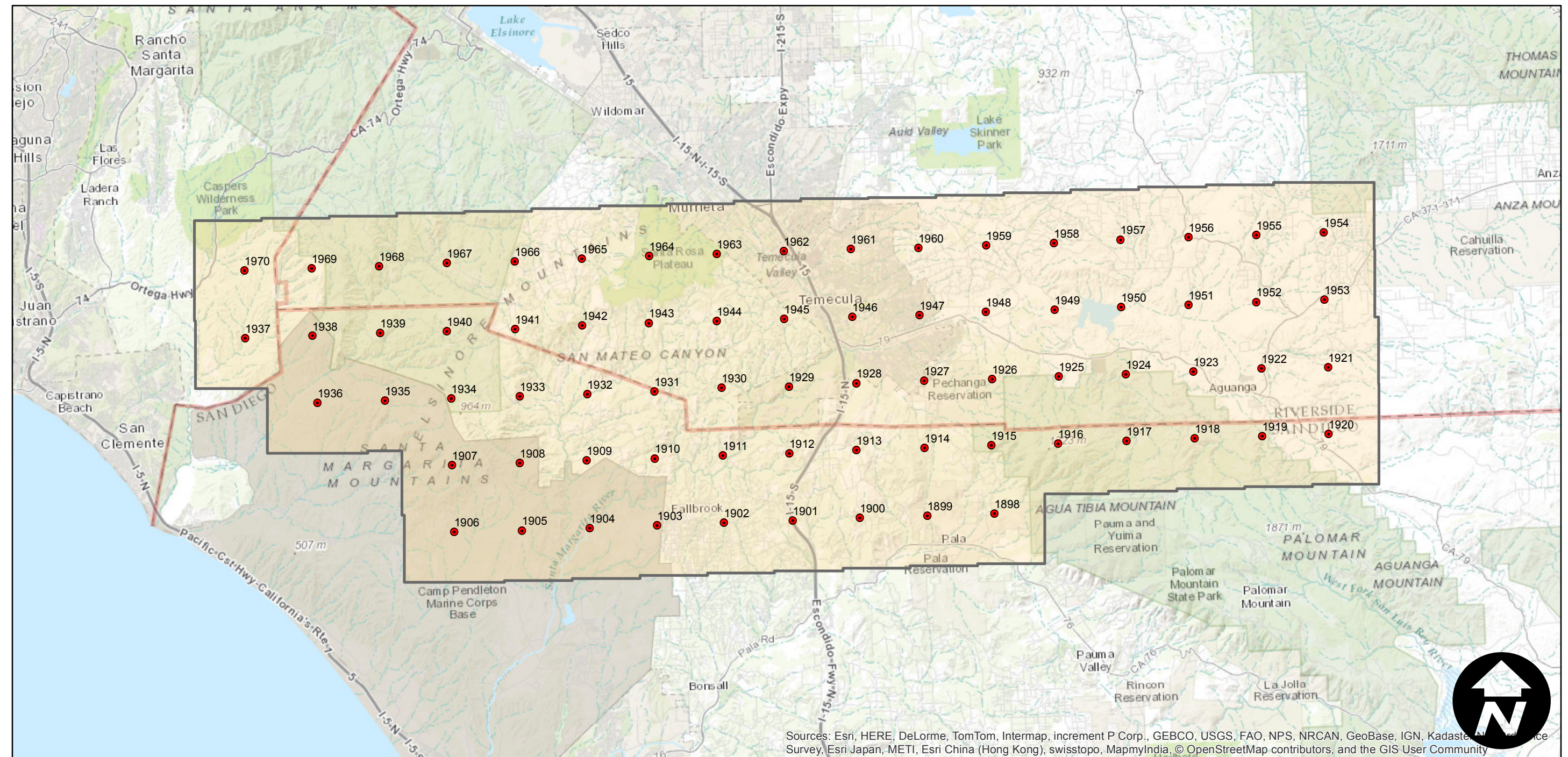
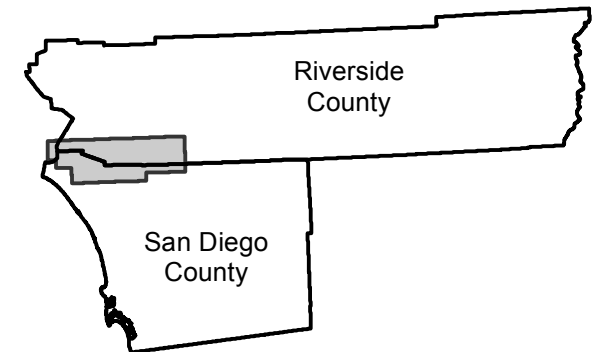


EAG-25

Counties: Riverside, San Diego
Flight date(s): 03-18-2008
Scale: 1:27,000
Overlap: 30%

Note: Vicinity of Fallbrook and Temecula (area between SR74 and SR371). Imagery acquired December 2013.

FLIGHT LOCATION



Sources: Esri, HERE, DeLorme, TomTom, Intermap, increment P Corp., GEBCO, USGS, FAO, NPS, NRCAN, GeoBase, IGN, Kadaster, Nippon, Survey, Esri Japan, METI, Esri China (Hong Kong), swisstopo, MapmyIndia, © OpenStreetMap contributors, and the GIS User Community

0 4 8 16 Miles

Index to Aerial Photography
Page 1 of 1

Scale of this index: 1:250,000