

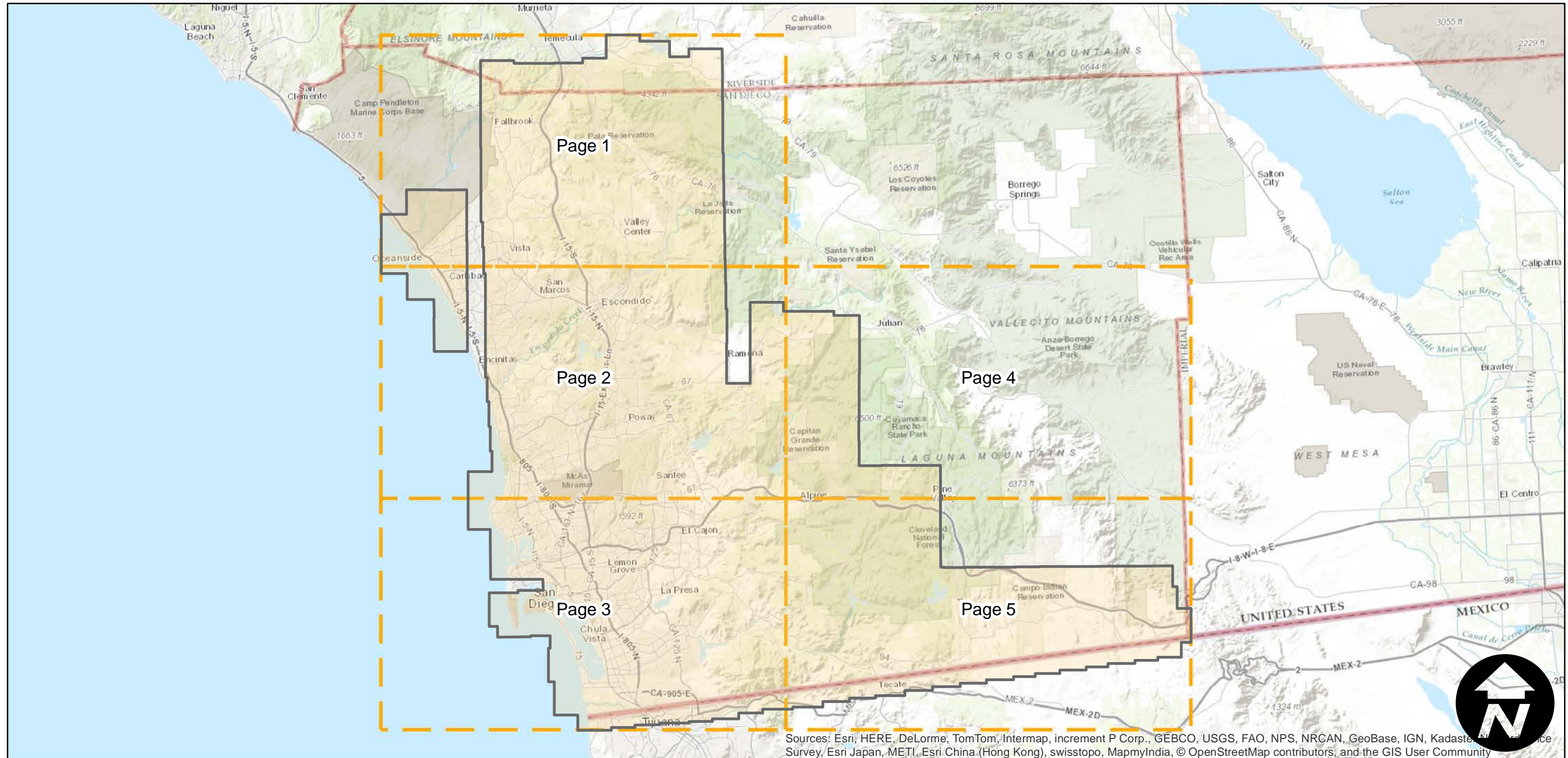
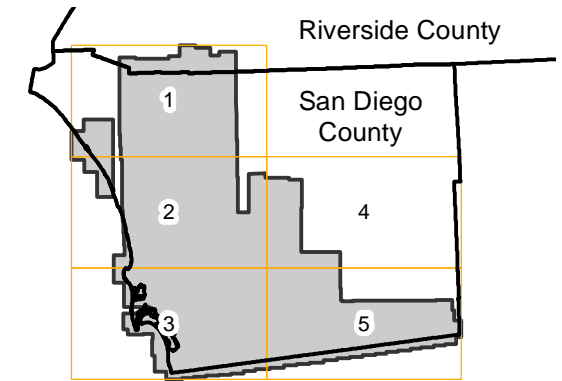
EAG-24

Counties: San Diego, Riverside
Flight date(s): 01-15-2008 to 1-19-2008
Scale: 1:24,000
Overlap: 30%

Note: Western and most of central San Diego County. Vail Lake to U.S./Mexico border. Coverage extends eastward along the U.S./Mexico border to Imperial County line. Imagery acquired December 2013.

Complete Metadata:
<http://www.library.ucsb.edu/mil/aerial-photography-tools>

FLIGHT LOCATION



Sources: Esri, HERE, DeLorme, TomTom, Intermap, increment P Corp., GEBCO, USGS, FAO, NPS, NRCAN, GeoBase, IGN, Kadaster, N, and the GIS User Community

0 10 20 40 Miles

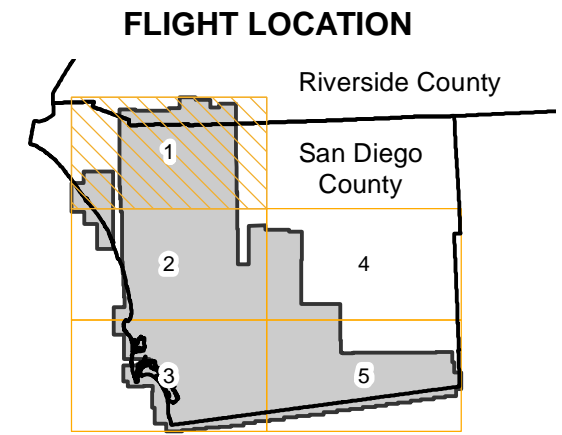
Index to Aerial Photography
Page Key

Scale of this index: 1:650,000

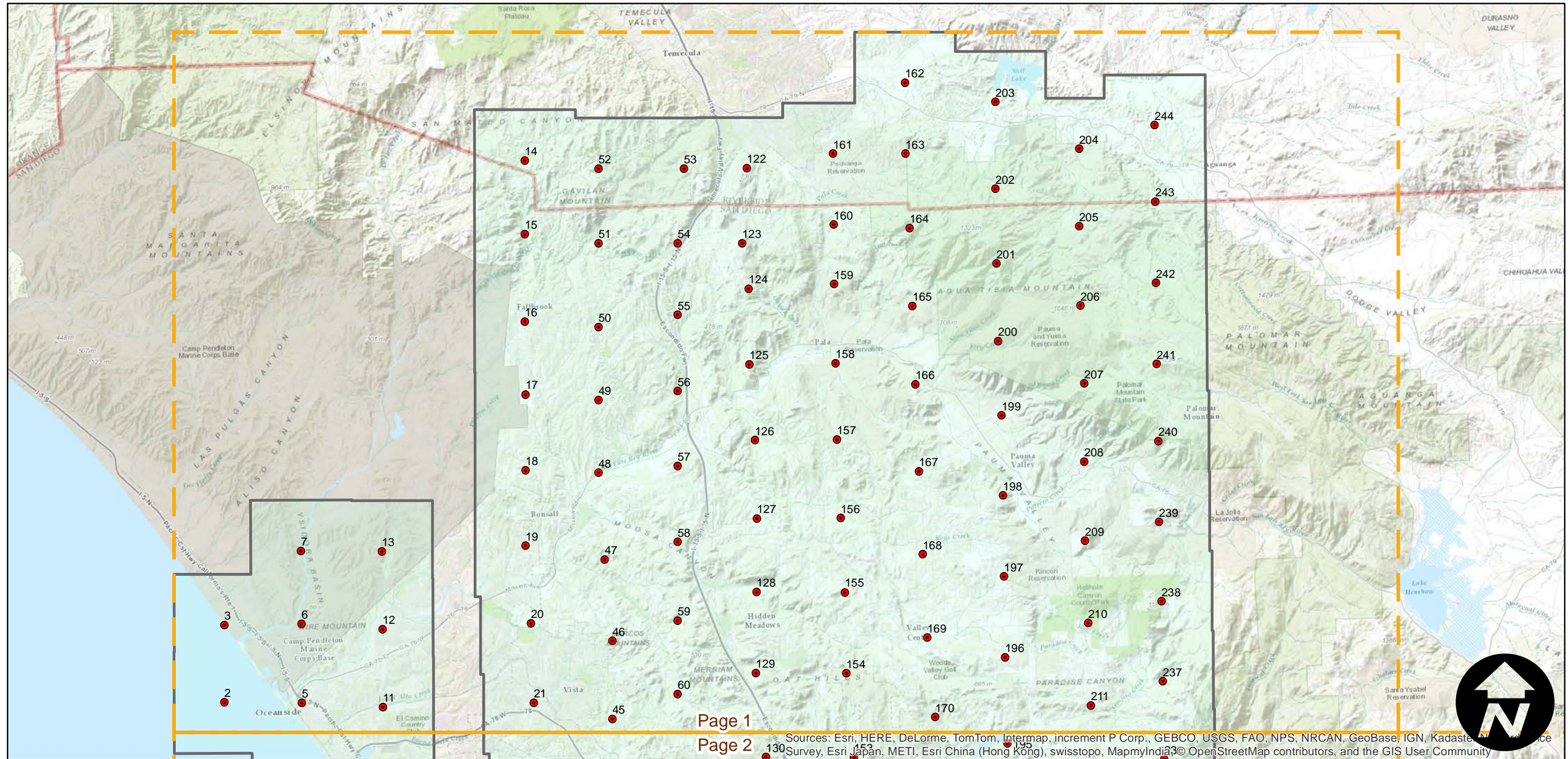
EAG-24

Counties: San Diego, Riverside
 Flight date(s): 01-15-2008 to 1-19-2008
 Scale: 1:24,000
 Overlap: 30%

Note: Western and most of central San Diego County. Vail Lake to U.S./Mexico border. Coverage extends eastward along the U.S./Mexico border to Imperial County line. Imagery acquired December 2013.

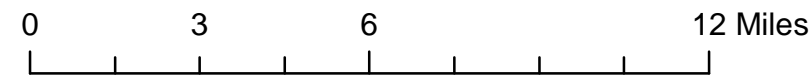


Complete Metadata:
<http://www.library.ucsb.edu/mil/aerial-photography-tools>



Page 1
 Page 2

Sources: Esri, HERE, DeLorme, TomTom, Intermap, increment P Corp., GEBCO, USGS, FAO, NPS, NRCAN, GeoBase, IGN, Kadaster, Survey, Esri Japan, METI, Esri China (Hong Kong), swisstopo, MapmyIndia, © OpenStreetMap contributors, and the GIS User Community



Index to Aerial Photography
 Page 1 of 5

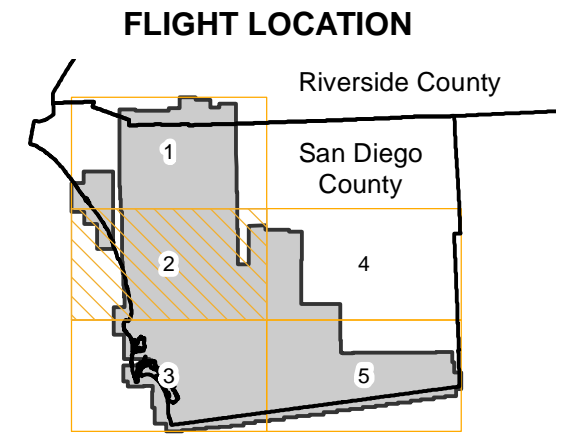
Scale of this index: 1:215,000



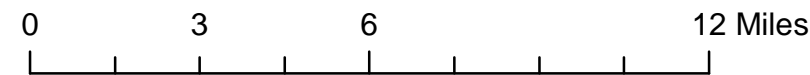
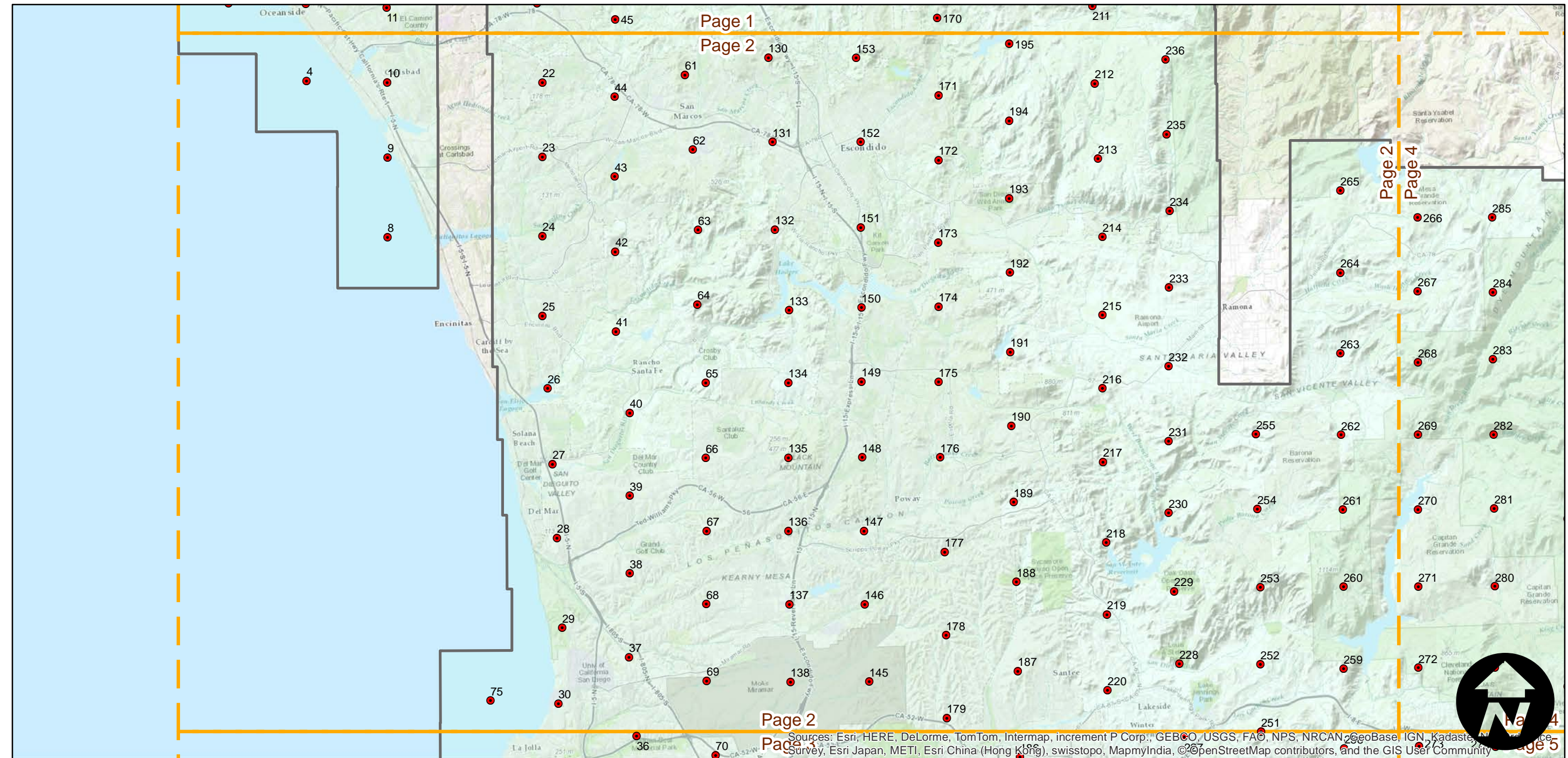
EAG-24

Counties: San Diego, Riverside
Flight date(s): 01-15-2008 to 1-19-2008
Scale: 1:24,000
Overlap: 30%

Note: Western and most of central San Diego County. Vail Lake to U.S./Mexico border. Coverage extends eastward along the U.S./Mexico border to Imperial County line. Imagery acquired December 2013.



Complete Metadata:
<http://www.library.ucsb.edu/mil/aerial-photography-tools>

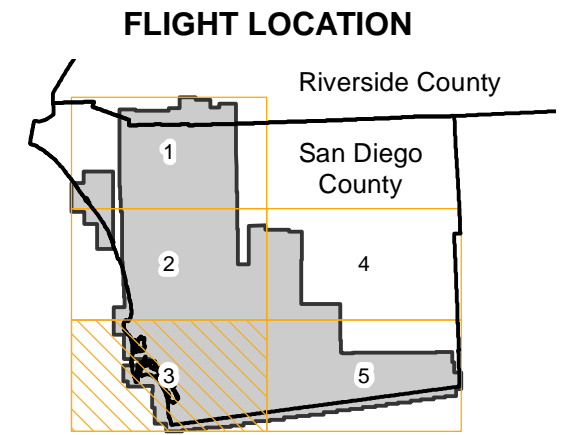


Sources: Esri, HERE, DeLorme, TomTom, Intermap, increment P Corp., GEBCO, USGS, FAO, NPS, NRCAN, GeoBase, IGN, Kadaster, Swisstopo, Esri Japan, METI, Esri China (Hong Kong), swisstopo, MapmyIndia, ©OpenStreetMap contributors, and the GIS User Community

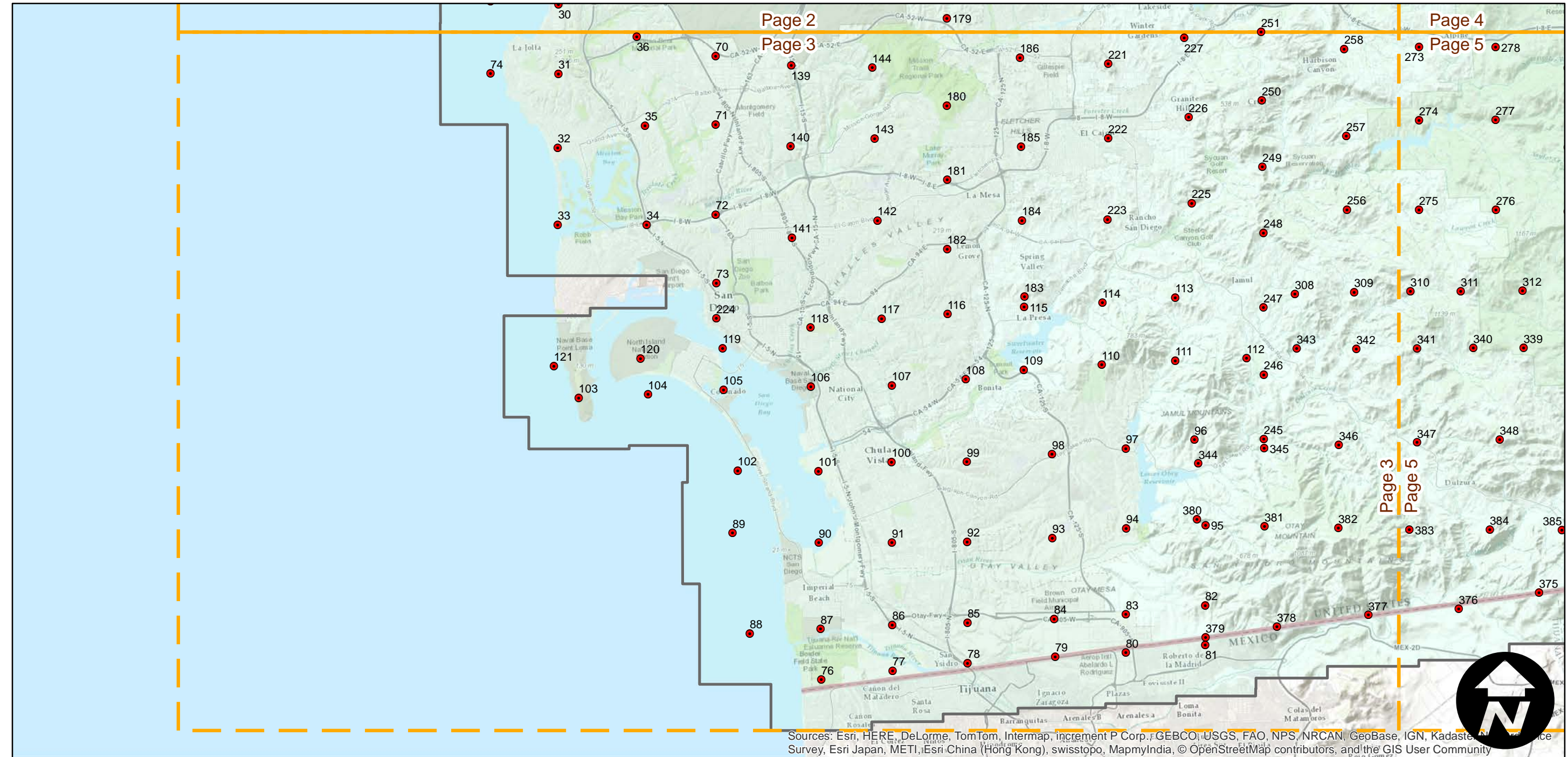
EAG-24

Counties: San Diego, Riverside
Flight date(s): 01-15-2008 to 1-19-2008
Scale: 1:24,000
Overlap: 30%

Note: Western and most of central San Diego County. Vail Lake to U.S./Mexico border. Coverage extends eastward along the U.S./Mexico border to Imperial County line. Imagery acquired December 2013.



Complete Metadata:
<http://www.library.ucsb.edu/mil/aerial-photography-tools>



Sources: Esri, HERE, DeLorme, TomTom, Intermap, increment P Corp., GEBCO, USGS, FAO, NPS, NRCAN, GeoBase, IGN, Kadaster, N, and
Survey, Esri Japan, METI, Esri China (Hong Kong), swisstopo, MapmyIndia, © OpenStreetMap contributors, and the GIS User Community

0 3 6 12 Miles

Index to Aerial Photography
Page 3 of 5

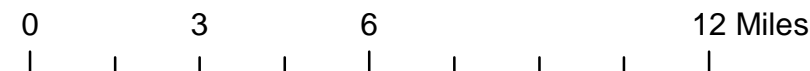
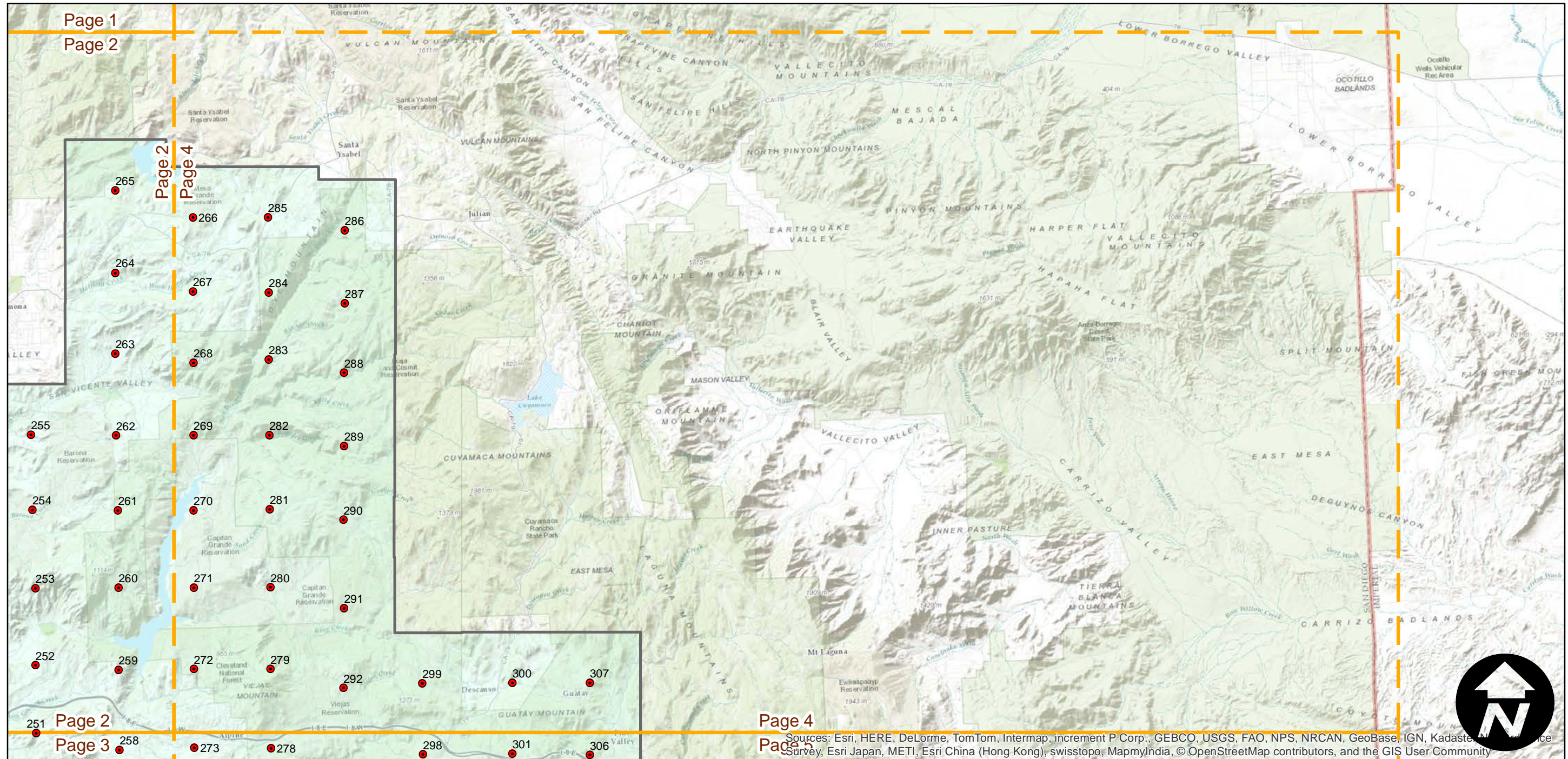
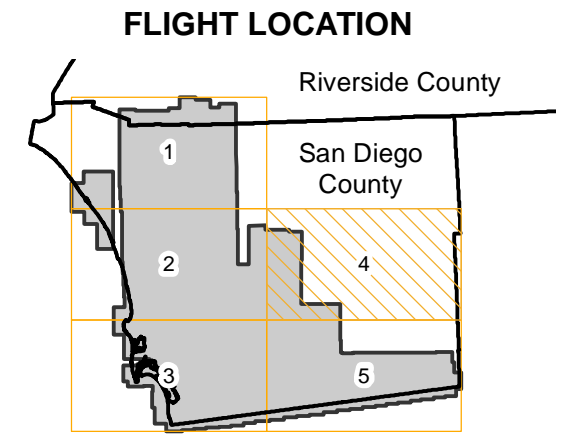
Scale of this index: 1:215,000

EAG-24

Counties: San Diego, Riverside
 Flight date(s): 01-15-2008 to 1-19-2008
 Scale: 1:24,000
 Overlap: 30%

Note: Western and most of central San Diego County. Vail Lake to U.S./Mexico border. Coverage extends eastward along the U.S./Mexico border to Imperial County line. Imagery acquired December 2013.

Complete Metadata:
<http://www.library.ucsb.edu/mil/aerial-photography-tools>

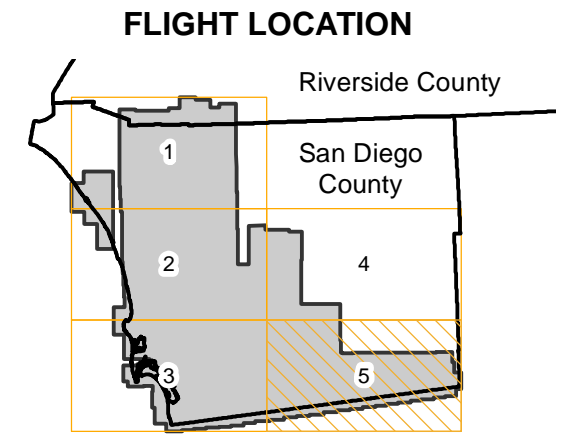


Sources: Esri, HERE, DeLorme, TomTom, Intermap, increment P Corp., GEBCO, USGS, FAO, NPS, NRCAN, GeoBase, IGN, Kadaster, NGA, Swisstopo, Esri Japan, METI, Esri China (Hong Kong), swisstopo, MapmyIndia, © OpenStreetMap contributors, and the GIS User Community

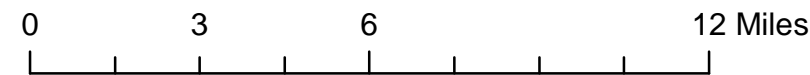
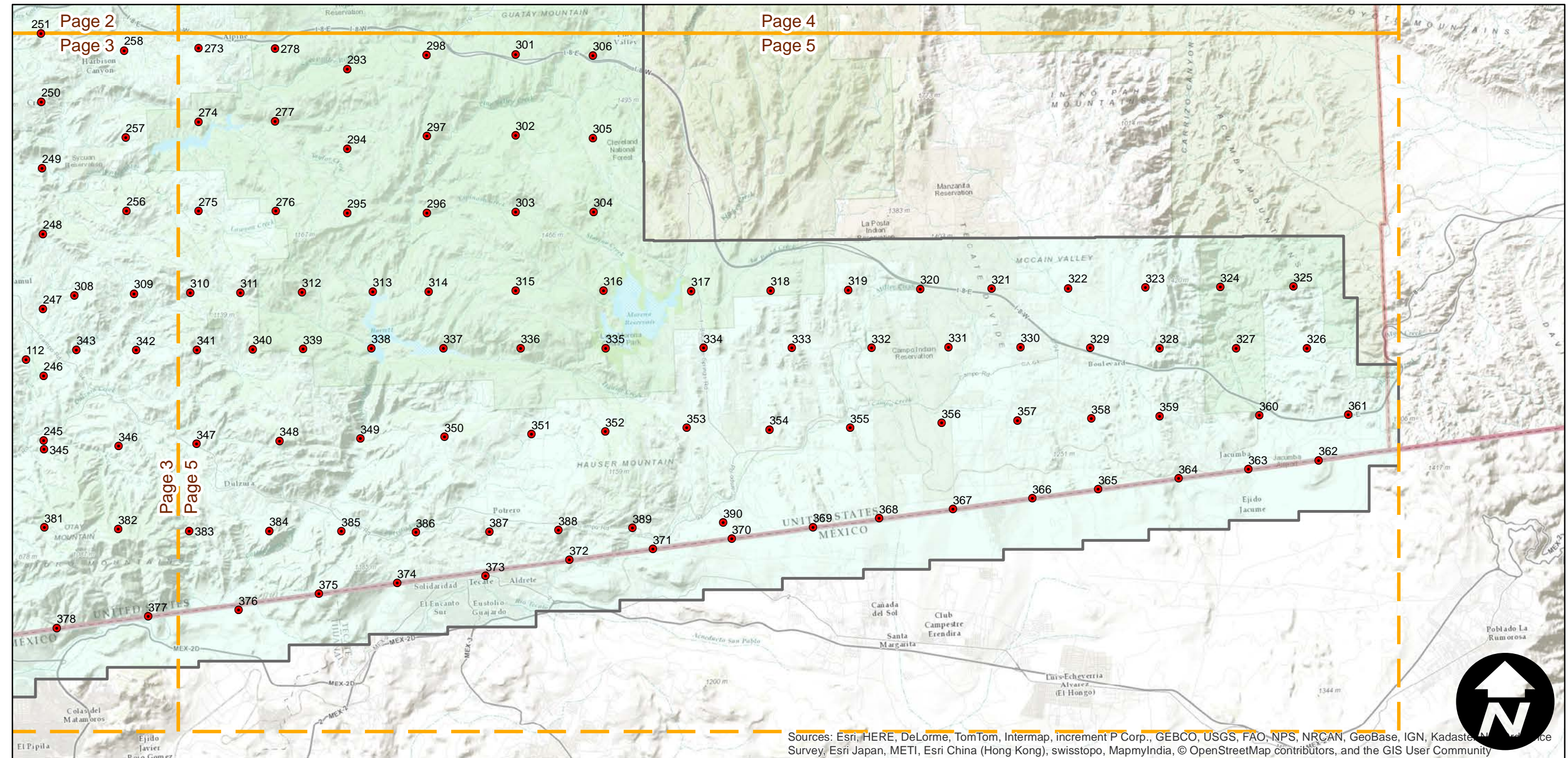
EAG-24

Counties: San Diego, Riverside
Flight date(s): 01-15-2008 to 1-19-2008
Scale: 1:24,000
Overlap: 30%

Note: Western and most of central San Diego County. Vail Lake to U.S./Mexico border. Coverage extends eastward along the U.S./Mexico border to Imperial County line. Imagery acquired December 2013.



Complete Metadata:
<http://www.library.ucsb.edu/mil/aerial-photography-tools>



Sources: Esri, HERE, DeLorme, TomTom, Intermap, increment P Corp., GEBCO, USGS, FAO, NPS, NRCAN, GeoBase, IGN, Kadaster, Nippon, Survey, Esri Japan, METI, Esri China (Hong Kong), swisstopo, MapmyIndia, © OpenStreetMap contributors, and the GIS User Community