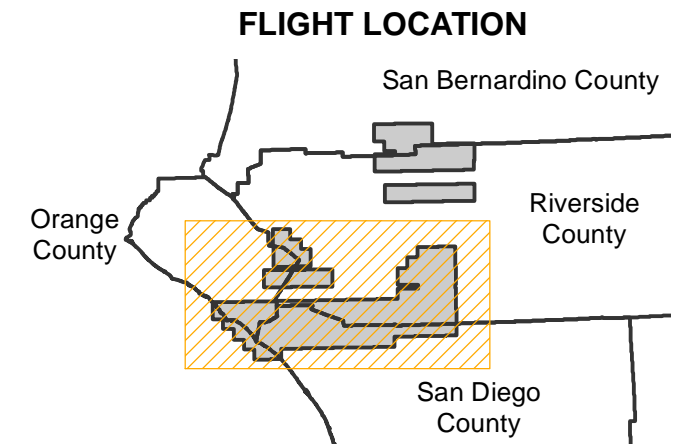


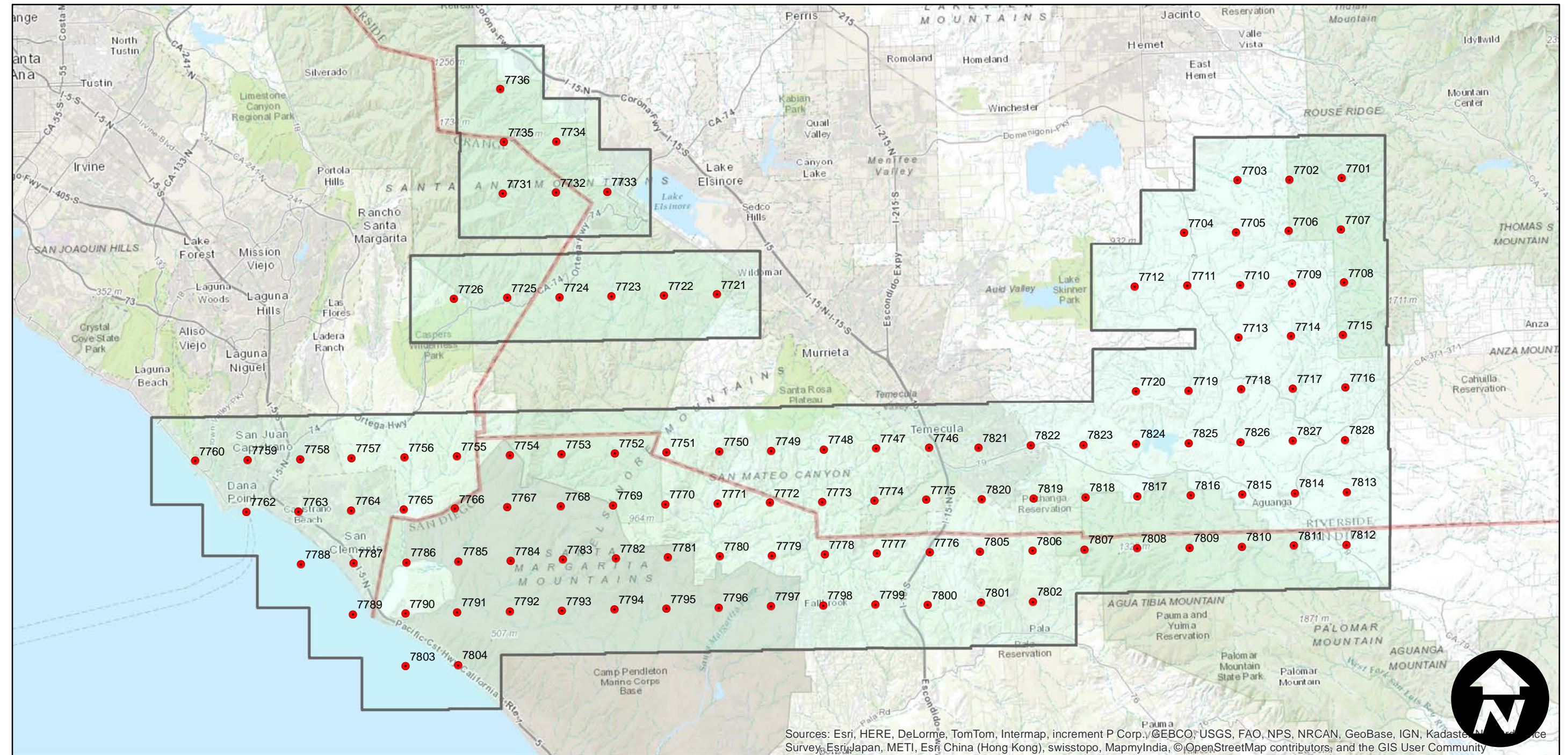
# EAG-09

Counties: Orange, San Diego, Riverside, San Bernardino  
 Flight date(s): 05-09-2007 to 05-27-2007  
 Scale: 1:28,000  
 Overlap: 30%

Note: Dana Point and Northern Camp Pendleton to Cahuilla Mountain; Vicinity of Santa Ana Mountains and Ortega Highway (SR74); Foothills of San Bernardino Mountains near Yucaipa and foothills of San Jacinto Mountains South of Banning. Imagery acquired December 2013.



Complete Metadata:  
<http://www.library.ucsb.edu/mil/aerial-photography-tools>



Sources: Esri, HERE, DeLorme, TomTom, Intermap, increment P Corp., ©GBCO, USGS, FAO, NPS, NRCAN, GeoBase, IGN, Kadaster, N, and other contributors.

0 5 10 20 Miles

Index to Aerial Photography  
 Page 1 of 2

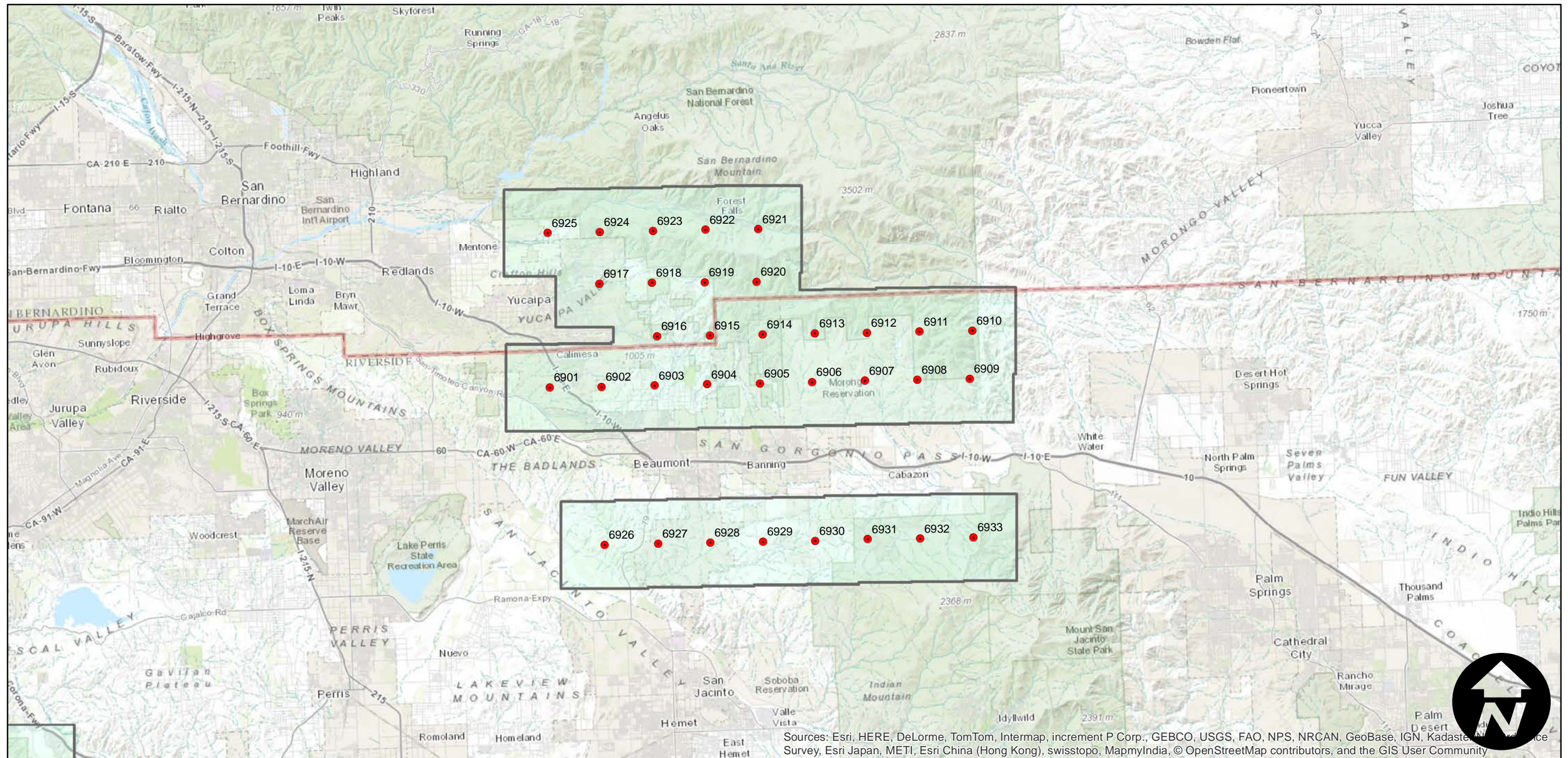
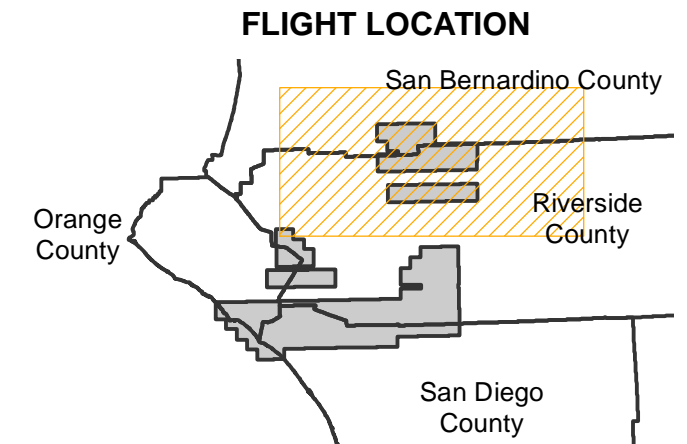
Scale of this index: 1:300,000

# EAG-09

Counties: Orange, San Diego, Riverside, San Bernardino  
Flight date(s): 05-09-2007 to 05-27-2007  
Scale: 1:28,000  
Overlap: 30%

Complete Metadata:  
<http://www.library.ucsb.edu/mil/aerial-photography-tools>

Note: Dana Point and Northern Camp Pendleton to Cahuilla Mountain; Vicinity of Santa Ana Mountains and Ortega Highway (SR74); Foothills of San Bernardino Mountains near Yucaipa and foothills of San Jacinto Mountains South of Banning. Imagery acquired December 2013.



Sources: Esri, HERE, DeLorme, TomTom, Intermap, increment P Corp., GEBCO, USGS, FAO, NPS, NRCAN, GeoBase, IGN, Kadaster, NGA, Swisstopo, Esri Japan, METI, Esri China (Hong Kong), swisstopo, MapmyIndia, © OpenStreetMap contributors, and the GIS User Community

0 5 10 20 Miles

Index to Aerial Photography  
Page 2 of 2

Scale of this index: 1:300,000