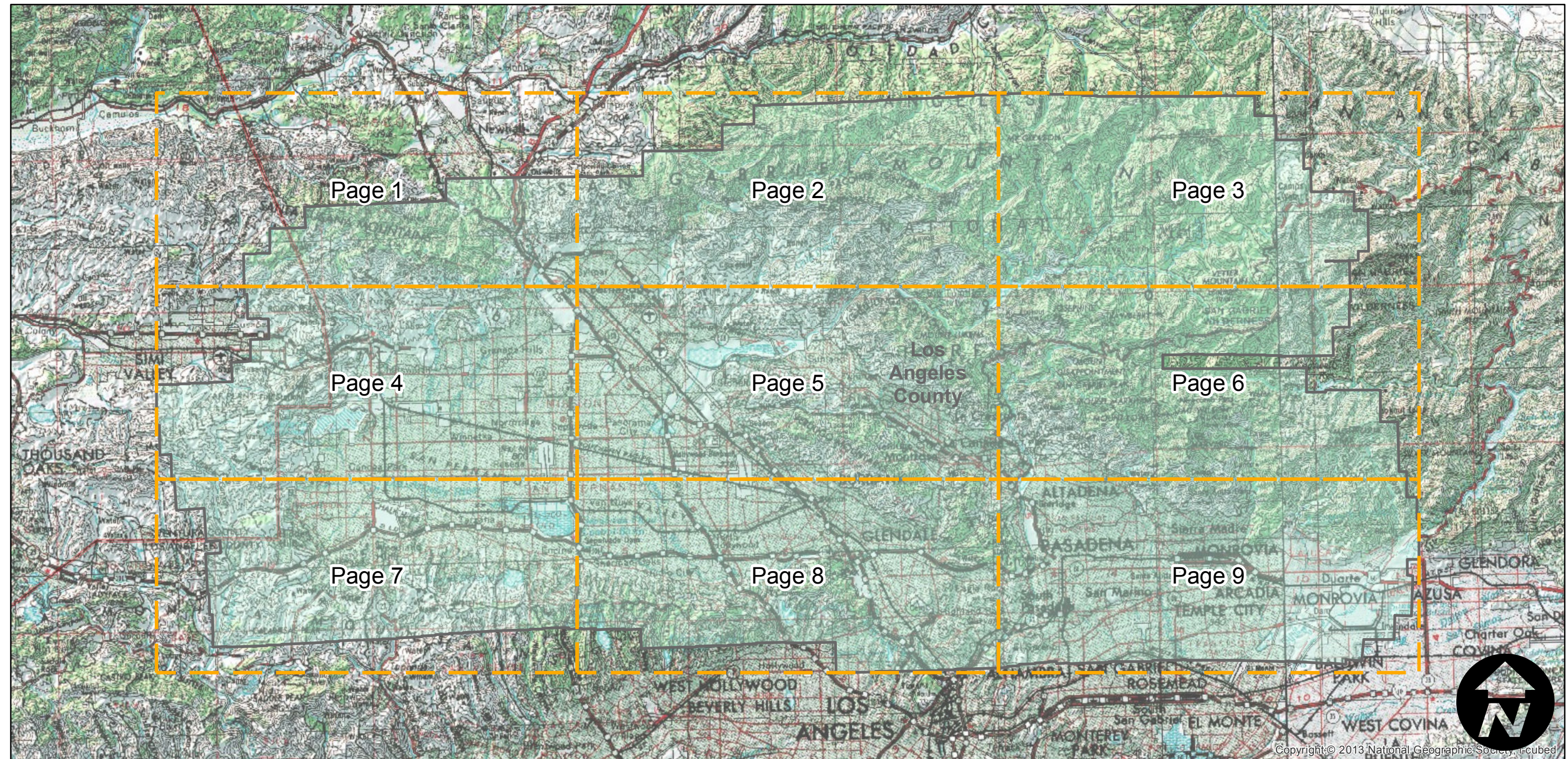


# DDF-1944

Counties: Los Angeles, Ventura  
Flight date(s): 11-22-1944 to 02-23-1945  
Scale: 1:10,000  
Overlap: 60%

Note: Los Angeles River watershed: Ventura County Line to Irwindale area. Camera and Altitude information derived from Fairchild records for C-9220 which covers same geographic area.

## FLIGHT LOCATION



0 5 10 20 Miles

Index to Aerial Photography  
Page Key

Scale of this index: 1:250,000

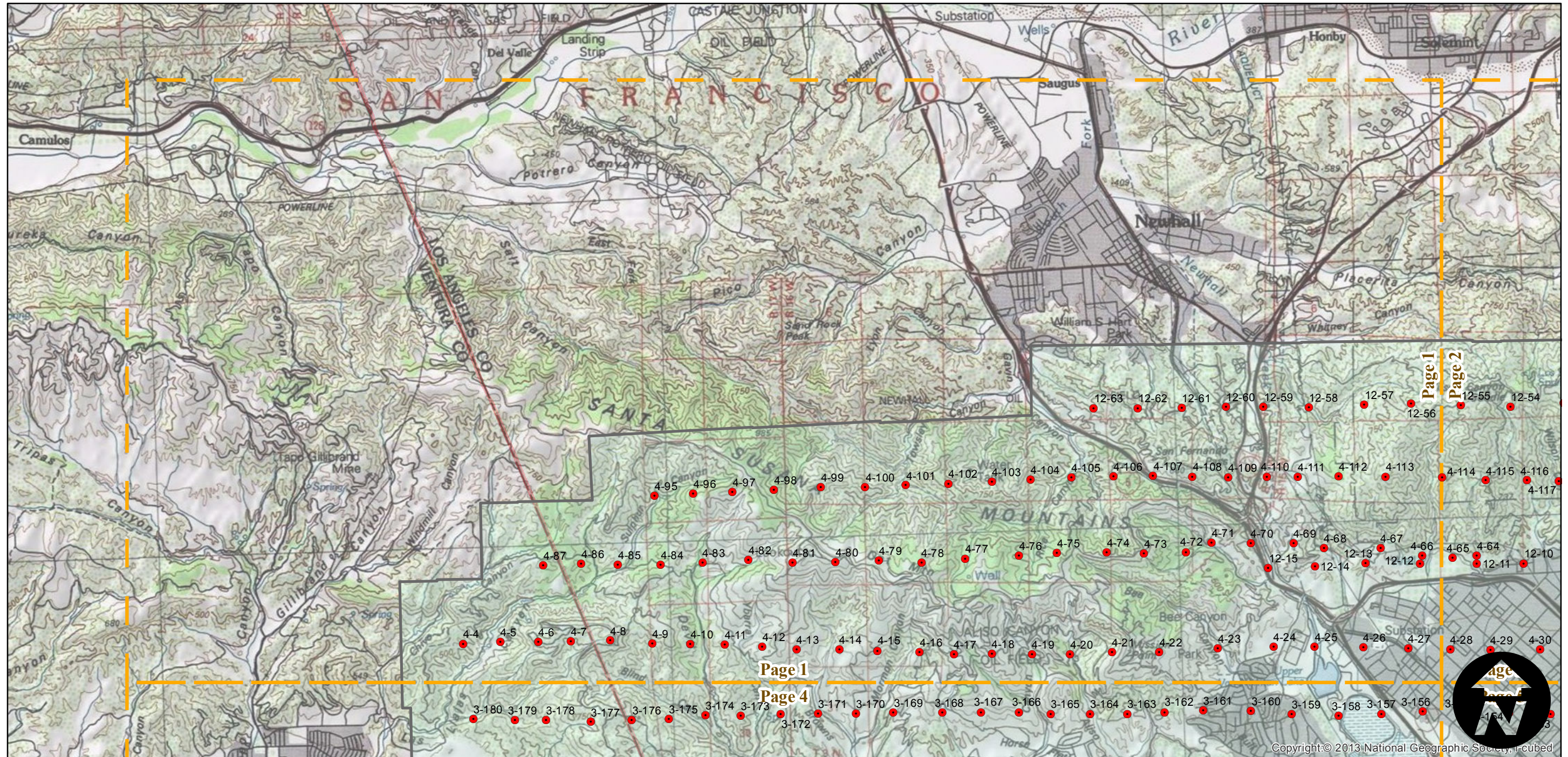
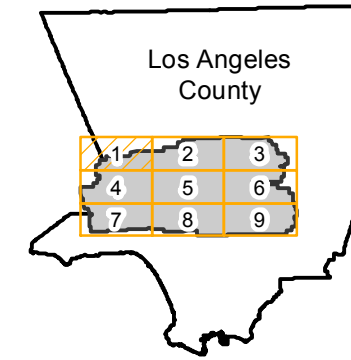


# DDF-1944

Counties: Los Angeles, Ventura  
Flight date(s): 11-22-1944 to 02-23-1945  
Scale: 1:10,000  
Overlap: 60%

Note: Los Angeles River watershed: Ventura County Line to Irwindale area. Camera and Altitude information derived from Fairchild records for C-9220 which covers same geographic area.

## FLIGHT LOCATION



0 1.5 3 6 Miles

Index to Aerial Photography  
Page 1 of 9

Scale of this index: 1:80,000

Copyright © 2013 National Geographic Society, i-cubed

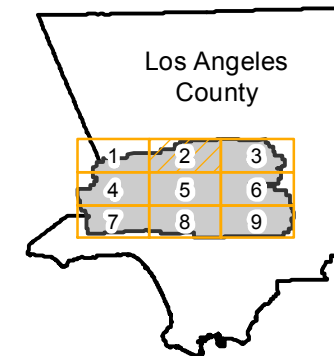


# DDF-1944

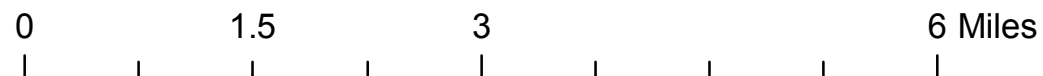
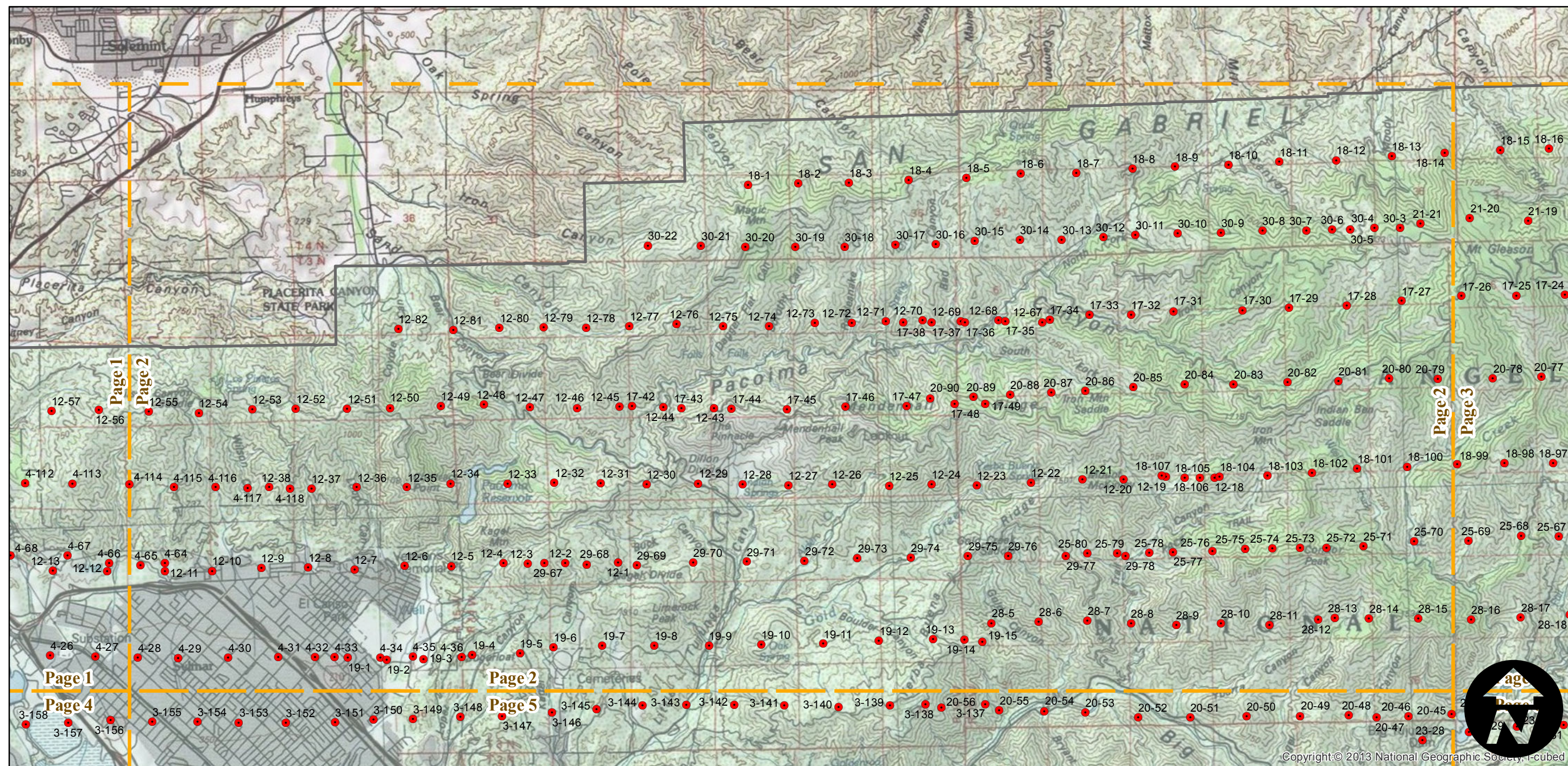
Counties: Los Angeles, Ventura  
Flight date(s): 11-22-1944 to 02-23-1945  
Scale: 1:10,000  
Overlap: 60%

Note: Los Angeles River watershed: Ventura County Line to Irwindale area. Camera and Altitude information derived from Fairchild records for C-9220 which covers same geographic area.

## FLIGHT LOCATION



Complete Metadata:  
<http://www.library.ucsb.edu/mil/aerial-photography-tools>



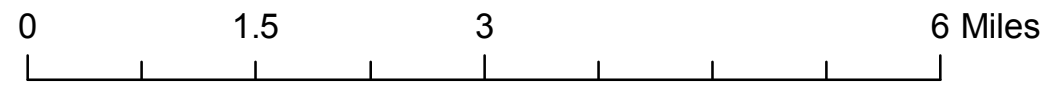
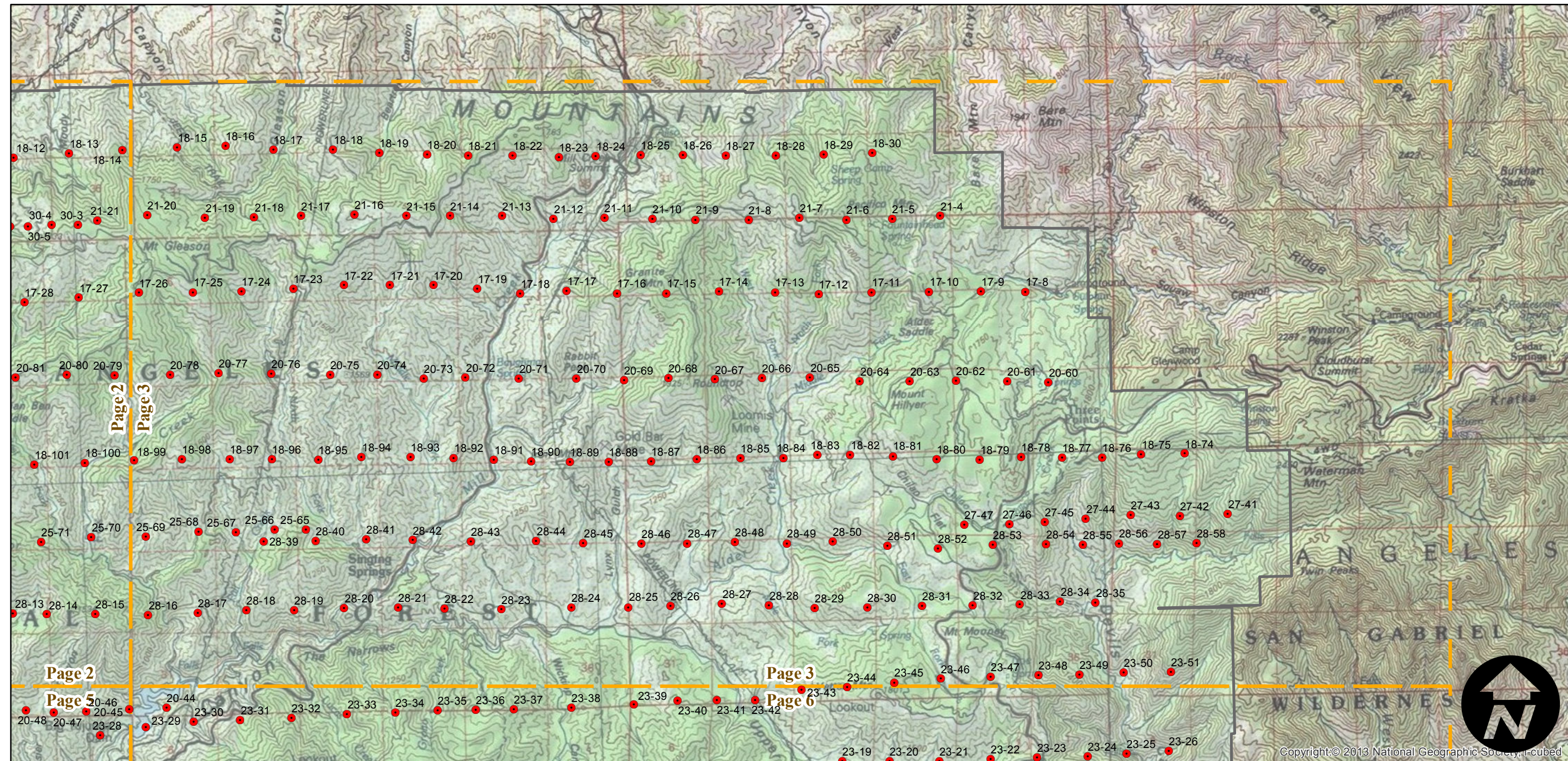
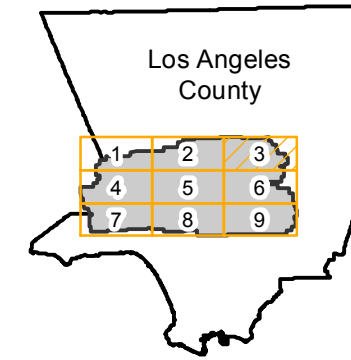


# DDF-1944

Counties: Los Angeles, Ventura  
Flight date(s): 11-22-1944 to 02-23-1945  
Scale: 1:10,000  
Overlap: 60%

Note: Los Angeles River watershed: Ventura County Line to Irwindale area. Camera and Altitude information derived from Fairchild records for C-9220 which covers same geographic area.

## FLIGHT LOCATION





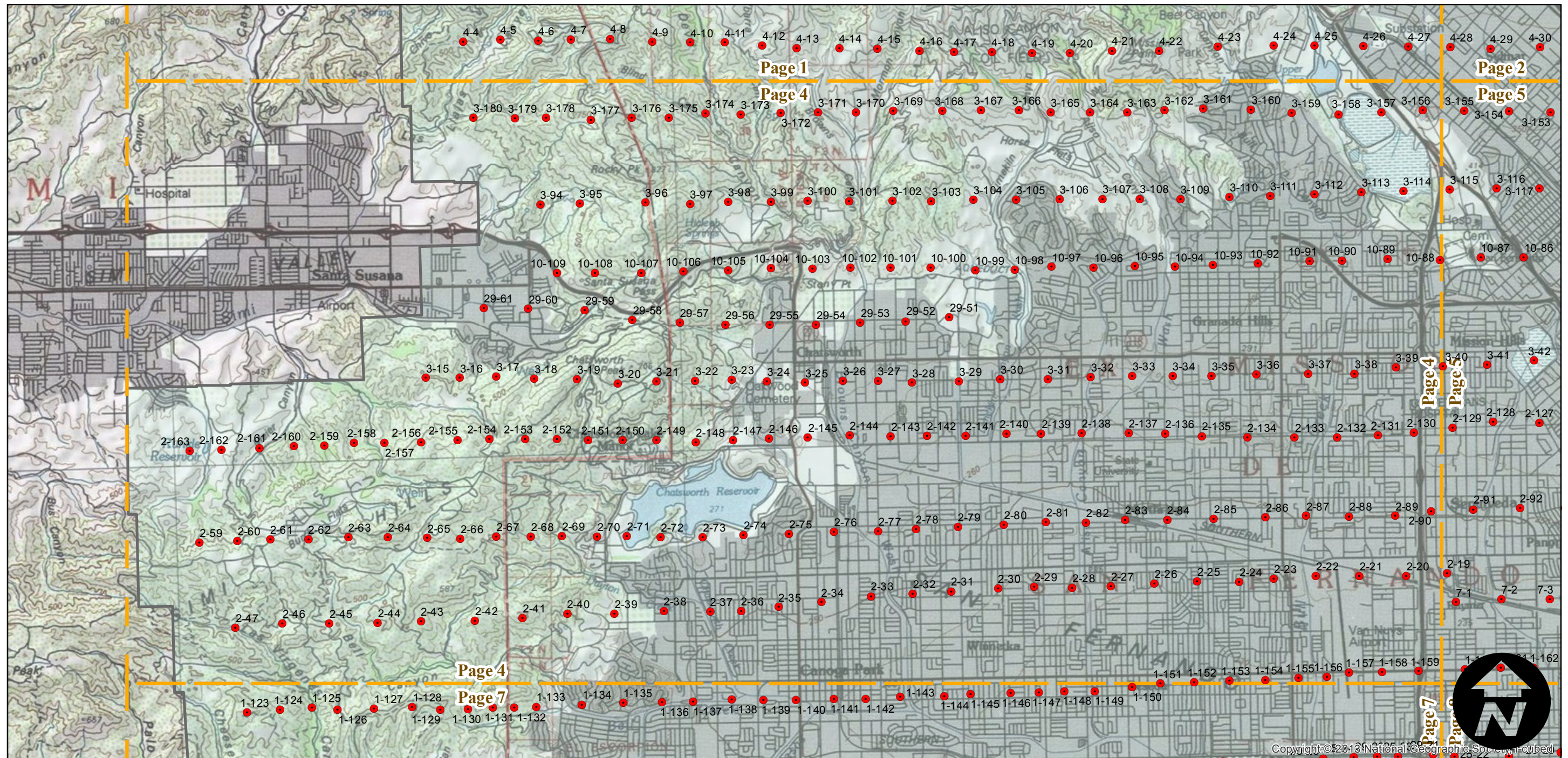
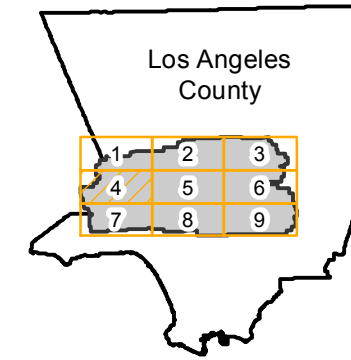
# DDF-1944

Counties: Los Angeles, Ventura  
Flight date(s): 11-22-1944 to 02-23-1945  
Scale: 1:10,000  
Overlap: 60%

Complete Metadata:  
<http://www.library.ucsb.edu/mil/aerial-photography-tools>

Note: Los Angeles River watershed: Ventura County Line to Irwindale area. Camera and Altitude information derived from Fairchild records for C-9220 which covers same geographic area.

## FLIGHT LOCATION



0 1.5 3 6 Miles

Index to Aerial Photography  
Page 4 of 9

Scale of this index: 1:80,000

Copyright © 2013 National Geographic Society, Inc. All rights reserved.

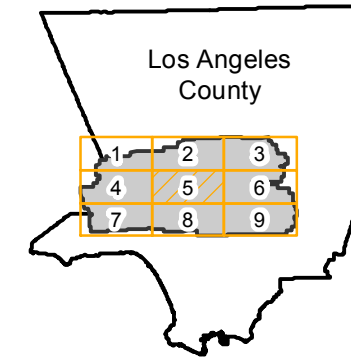


# DDF-1944

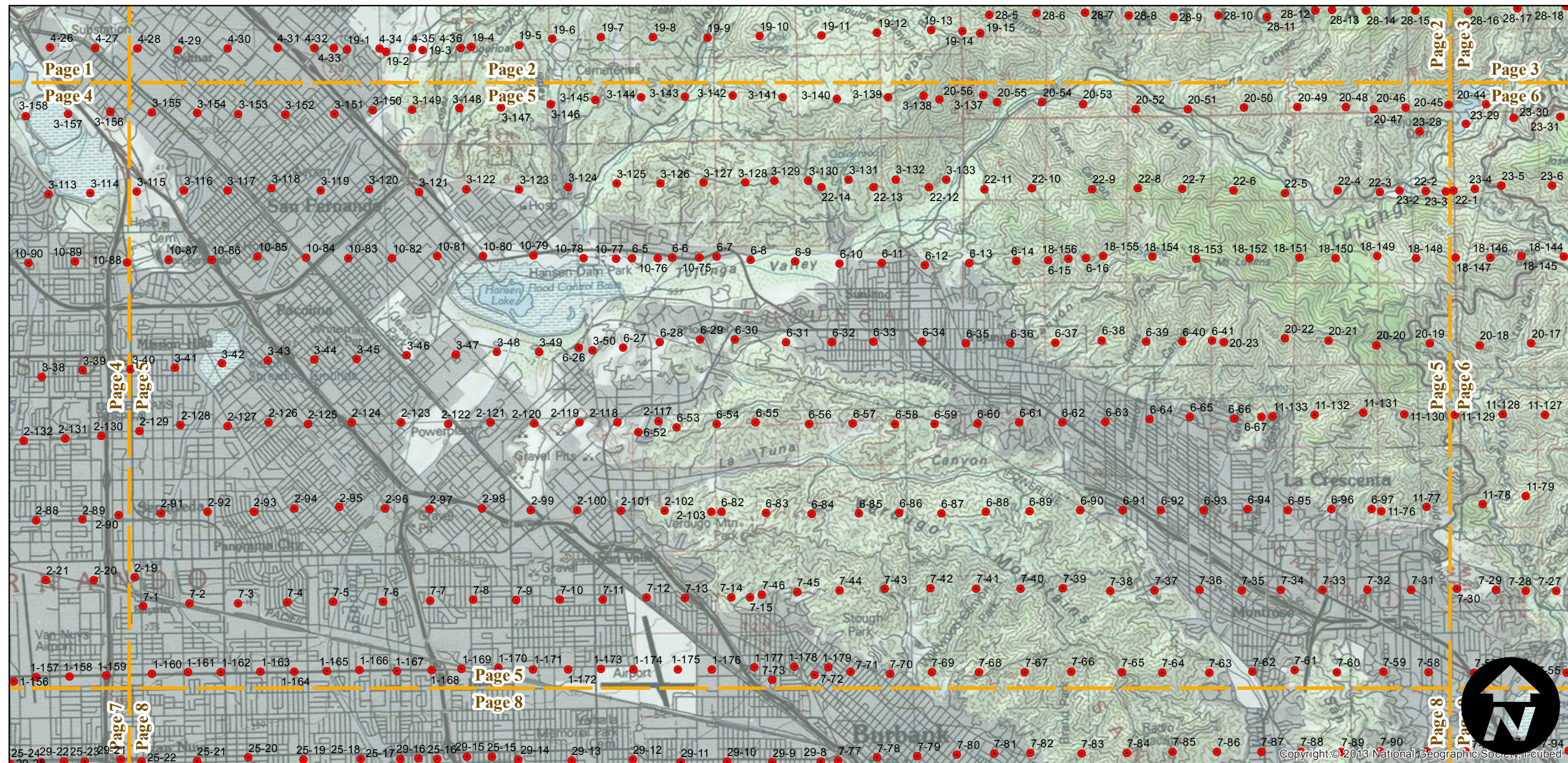
Counties: Los Angeles, Ventura  
Flight date(s): 11-22-1944 to 02-23-1945  
Scale: 1:10,000  
Overlap: 60%

Note: Los Angeles River watershed: Ventura County Line to Irwindale area. Camera and Altitude information derived from Fairchild records for C-9220 which covers same geographic area.

## FLIGHT LOCATION



Complete Metadata:  
<http://www.library.ucsb.edu/mil/aerial-photography-tools>



0 1.5 3 6 Miles

Index to Aerial Photography  
Page 5 of 9

Scale of this index: 1:80,000

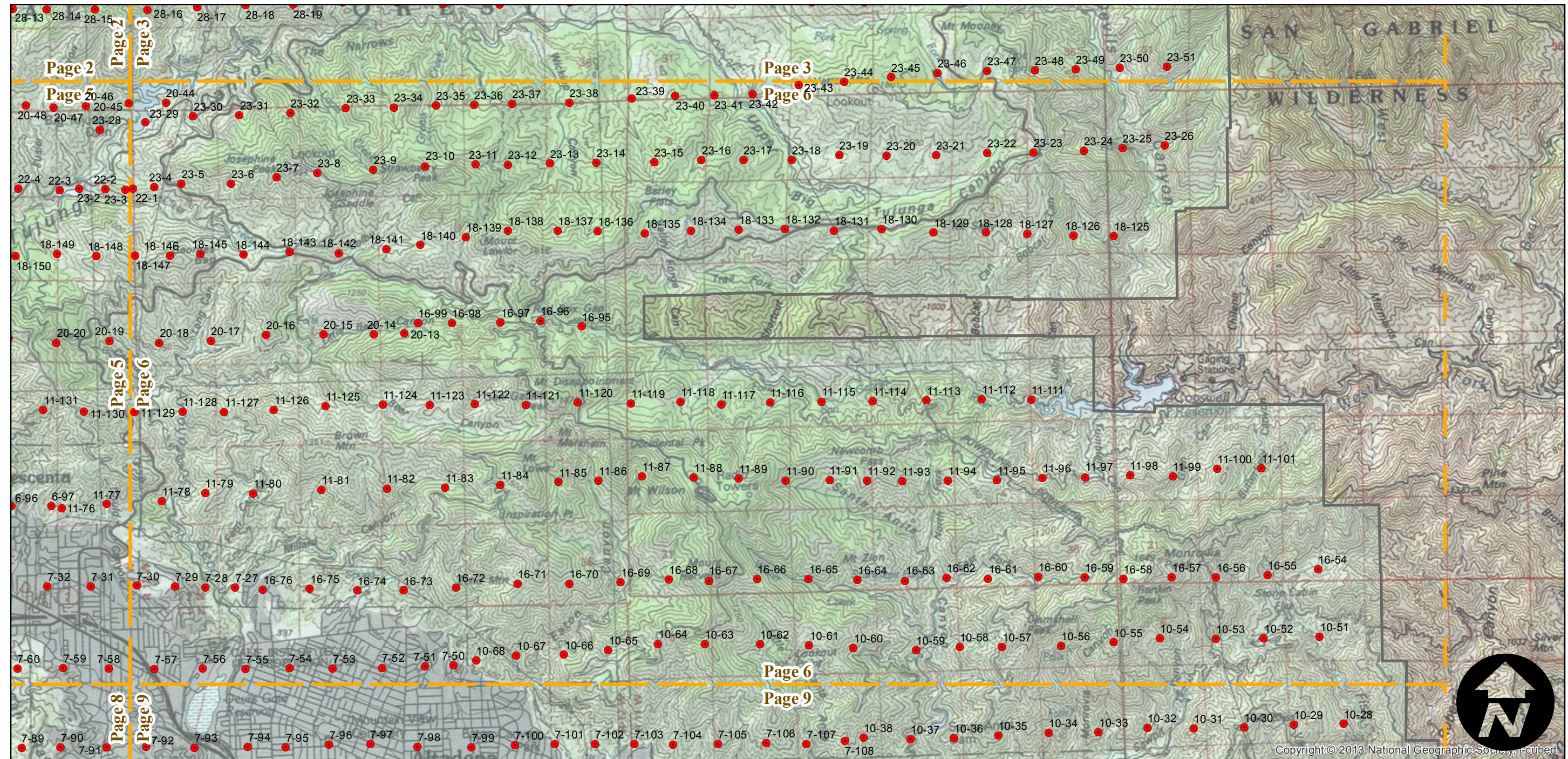
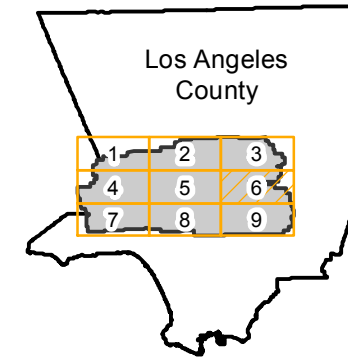


# DDF-1944

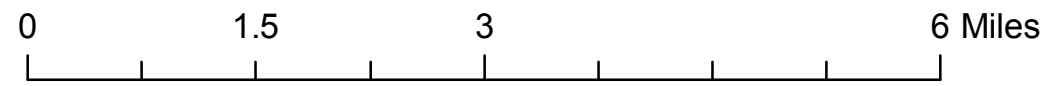
Counties: Los Angeles, Ventura  
Flight date(s): 11-22-1944 to 02-23-1945  
Scale: 1:10,000  
Overlap: 60%

Note: Los Angeles River watershed: Ventura County Line to Irwindale area. Camera and Altitude information derived from Fairchild records for C-9220 which covers same geographic area.

## FLIGHT LOCATION



Copyright:© 2013 National Geographic Society, i-cubed



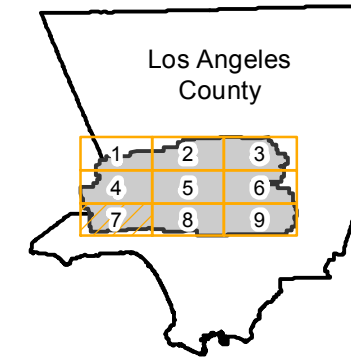


# DDF-1944

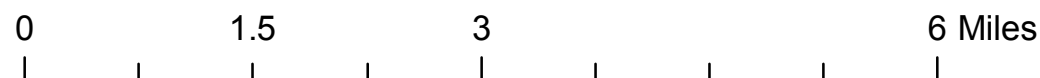
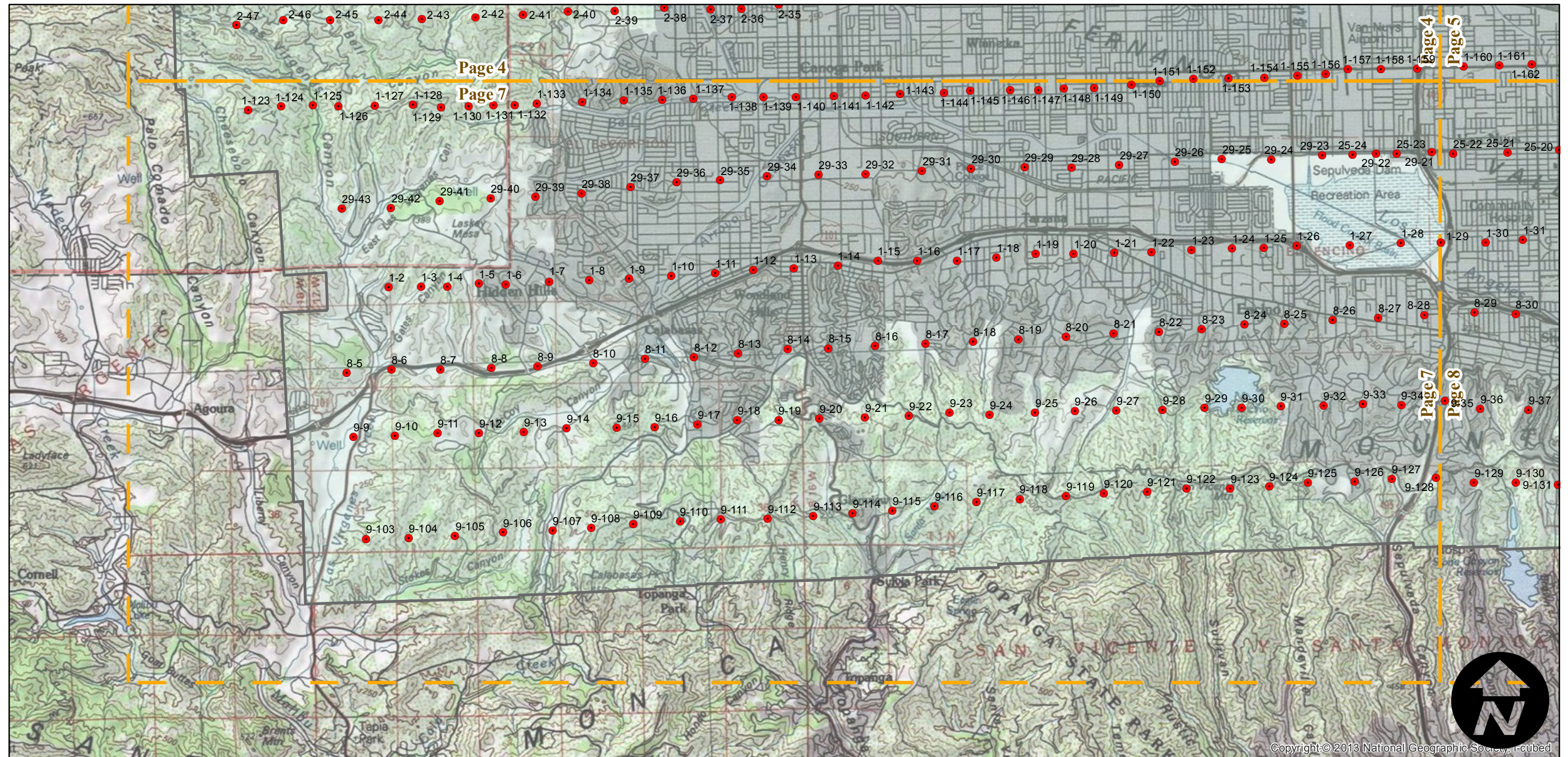
Counties: Los Angeles, Ventura  
Flight date(s): 11-22-1944 to 02-23-1945  
Scale: 1:10,000  
Overlap: 60%

Note: Los Angeles River watershed: Ventura County Line to Irwindale area. Camera and Altitude information derived from Fairchild records for C-9220 which covers same geographic area.

## FLIGHT LOCATION



Complete Metadata:  
<http://www.library.ucsb.edu/mil/aerial-photography-tools>



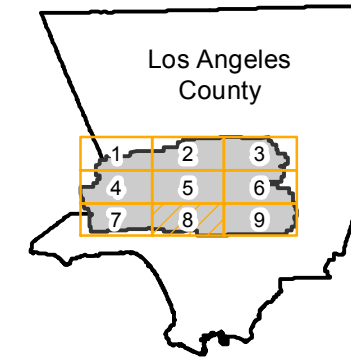


# DDF-1944

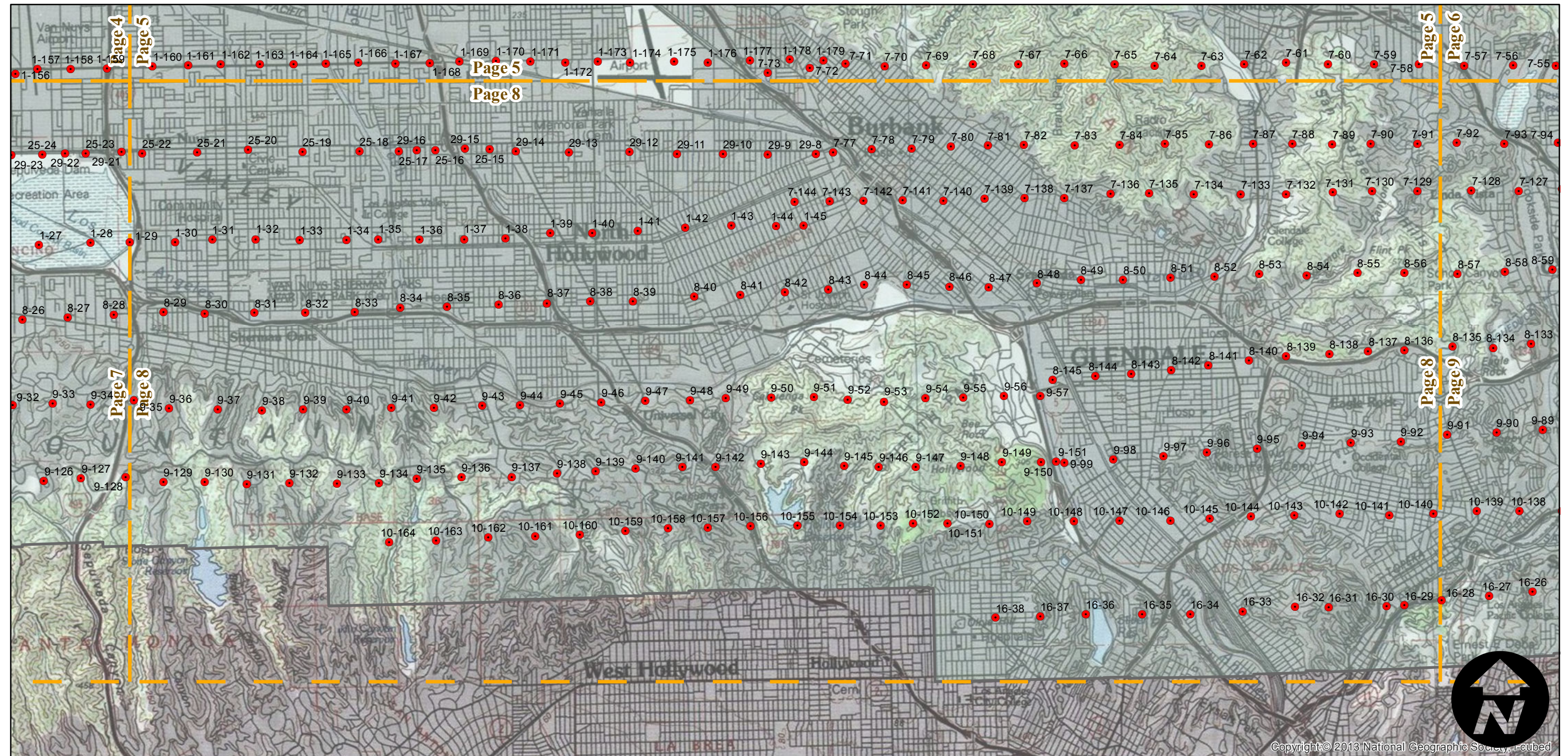
Counties: Los Angeles, Ventura  
Flight date(s): 11-22-1944 to 02-23-1945  
Scale: 1:10,000  
Overlap: 60%

Note: Los Angeles River watershed: Ventura County Line to Irwindale area. Camera and Altitude information derived from Fairchild records for C-9220 which covers same geographic area.

## FLIGHT LOCATION



Complete Metadata:  
<http://www.library.ucsb.edu/mil/aerial-photography-tools>



0 1.5 3 6 Miles

Index to Aerial Photography  
Page 8 of 9

Scale of this index: 1:80,000

Copyright © 2013 National Geographic Society, Inc.

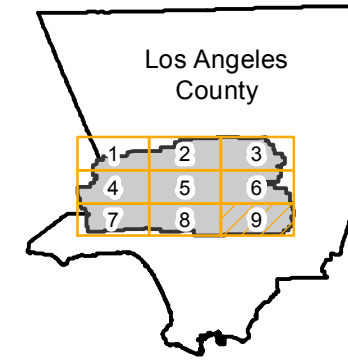


# DDF-1944

Counties: Los Angeles, Ventura  
Flight date(s): 11-22-1944 to 02-23-1945  
Scale: 1:10,000  
Overlap: 60%

Note: Los Angeles River watershed: Ventura County Line to Irwindale area. Camera and Altitude information derived from Fairchild records for C-9220 which covers same geographic area.

## FLIGHT LOCATION



0 1.5 3 6 Miles

Index to Aerial Photography  
Page 9 of 9

Scale of this index: 1:80,000

Copyright © 2013 National Geographic Society, Inc.